

# Him - Resurrection

♩ = 120,000000

Chitarra Distort.

Tastiera

7

Batteria

Chitarra Distort.

Basso

Tastiera

12

Batteria

Chitarra Distort.

Basso

Tastiera

Copyright © 2001 by tita

16

Batteria

Piano

Chitarra Acust.

Chitarra Distort.

Basso

Tastiera

Detailed description: This system covers measures 16, 17, and 18. The drum part (Batteria) features a consistent eighth-note pattern with a snare drum on the second and fourth beats of each measure. The piano part (Piano) has a melodic line starting with a whole rest in measure 16, followed by quarter notes in measures 17 and 18. The acoustic guitar (Chitarra Acust.) has a melodic line starting in measure 17. The distorted guitar (Chitarra Distort.) plays a power chord in measure 16 and a full chord in measure 17. The bass (Basso) plays a steady eighth-note line. The keyboard (Tastiera) has whole rests in measures 16 and 17.

19

Batteria

Piano

Chitarra Acust.

Chitarra Distort.

Basso

Tastiera

Detailed description: This system covers measures 19, 20, and 21. The drum part (Batteria) continues with the same eighth-note pattern. The piano part (Piano) continues its melodic line. The acoustic guitar (Chitarra Acust.) continues its melodic line. The distorted guitar (Chitarra Distort.) plays a power chord in measure 19 and a full chord in measure 20. The bass (Basso) continues its eighth-note line. The keyboard (Tastiera) has a whole note chord in measure 19 and a half note chord in measure 20.

22

Batteria

Piano

Chitarra Acust.

Chitarra Distort.

Basso

Tastiera

25

Batteria

Piano

Chitarra Acust.

Chitarra Distort.

Basso

Tastiera

28

Batteria

Piano

Chitarra Acust.

Chitarra Distort.

Basso

Tastiera

31

Batteria

Piano

Chitarra Acust.

Chitarra Distort.

Basso

Tastiera

34

Batteria

Chitarra Distort.

Basso

Tastiera

37

Batteria

Chitarra Distort.

Basso

Tastiera

40

Batteria

Chitarra Distort.

Basso

Tastiera

43

Batteria

Chitarra Distort.

Basso

Tastiera

46

Batteria

Chitarra Distort.

Basso

Tastiera

49

Batteria

Piano

Chitarra Acust.

Chitarra Distort.

Basso

Tastiera

52

Batteria

Piano

Chitarra Acust.

Chitarra Distort.

Basso

Tastiera

55

Batteria

Piano

Chitarra Acust.

Chitarra Distort.

Basso

Tastiera

58

Batteria

Piano

Chitarra Acust.

Chitarra Distort.

Basso

Tastiera



61

Batteria

Piano

Chitarra Acust.

Chitarra Distort.

Basso

Tastiera

Detailed description: This system of musical notation covers measures 61, 62, and 63. The drum part (Batteria) features a consistent pattern of quarter notes with 'x' marks above them, indicating cymbal hits. The piano part (Piano) consists of a simple harmonic line with quarter notes. The acoustic guitar (Chitarra Acust.) plays a melodic line with eighth notes and some accidentals. The distorted guitar (Chitarra Distort.) provides a rhythmic accompaniment with power chords. The bass (Basso) plays a steady eighth-note pattern. The keyboard (Tastiera) part is mostly silent, with a few notes indicated by a brace and a single note in the final measure.

64

Batteria

Piano

Chitarra Acust.

Chitarra Distort.

Basso

Detailed description: This system of musical notation covers measures 64, 65, and 66. The drum part (Batteria) continues with the same pattern as in the previous system. The piano part (Piano) has a few more notes, including a sharp sign. The acoustic guitar (Chitarra Acust.) continues its melodic line. The distorted guitar (Chitarra Distort.) has some rests in measures 65 and 66. The bass (Basso) continues its eighth-note pattern with some rests in the later measures. The keyboard part remains mostly silent.

67

Batteria

Piano

Chitarra Acust.

Chitarra Distort.

Basso

70

Batteria

Piano

Chitarra Acust.

73

Batteria

Piano

Chitarra Acust.

Chitarra Distort.

Basso

76

Batteria

Piano

Chitarra Acust.

Chitarra Distort.

Basso

79

Batteria

Piano

Chitarra Acust.

Chitarra Distort.

Basso

82

Batteria

Piano

Chitarra Acust.

Chitarra Distort.

Basso

Tastiera

Detailed description: This system contains measures 82, 83, and 84. The drum part (Batteria) features a consistent pattern of eighth notes on a snare drum. The piano part (Piano) consists of a sequence of chords: a D major chord in measure 82, an E major chord in measure 83, and a D major chord with a sharp sign in measure 84. The acoustic guitar (Chitarra Acust.) plays a melodic line with eighth notes and some accidentals. The distorted guitar (Chitarra Distort.) provides a harmonic accompaniment with chords. The bass (Basso) plays a steady eighth-note line. The keyboard (Tastiera) has a whole rest in measure 82 and plays chords in measures 83 and 84.

85

Batteria

Piano

Chitarra Acust.

Chitarra Distort.

Basso

Tastiera

Detailed description: This system contains measures 85, 86, and 87. The drum part (Batteria) continues with the same eighth-note pattern. The piano part (Piano) features chords: an E major chord in measure 85, a D major chord in measure 86, and an E major chord with a sharp sign in measure 87. The acoustic guitar (Chitarra Acust.) continues its melodic line. The distorted guitar (Chitarra Distort.) plays chords. The bass (Basso) maintains the eighth-note line. The keyboard (Tastiera) plays a sustained chord in measure 85 and has a whole rest in measure 86.

88

Batteria

Piano

Chitarra Acust.

Chitarra Distort.

Basso

91

Batteria

Piano

Chitarra Acust.

Chitarra Distort.

Basso

Tastiera

94

Batteria

Piano

Chitarra Acust.

Chitarra Distort.

Basso

Tastiera

97

Batteria

Piano

Chitarra Acust.

Chitarra Distort.

Basso

100

Batteria

Piano

Chitarra Acust.

Chitarra Distort.

Basso

Detailed description: This system of musical notation covers measures 100, 101, and 102. The top staff is for the drum set (Batteria) and includes a series of 'x' marks above the staff indicating specific drum hits. The piano (Piano) part features a melodic line with a key signature change to one sharp (F#) in measure 101. The acoustic guitar (Chitarra Acust.) part has a rhythmic pattern of eighth notes. The distorted guitar (Chitarra Distort.) part consists of block chords. The bass (Basso) part provides a simple harmonic foundation with quarter notes.

103

Batteria

Piano

Chitarra Acust.

Chitarra Distort.

Basso

Detailed description: This system of musical notation covers measures 103, 104, and 105. Similar to the previous system, it includes a drum staff with 'x' marks. The piano part continues its melodic line. The acoustic guitar part maintains its eighth-note pattern. The distorted guitar part uses block chords. The bass part continues with a simple harmonic line.

106

Batteria

Piano

Chitarra Acust.

Chitarra Distort.

Basso

Detailed description: This system of music covers measures 106, 107, and 108. The drum part (Batteria) features a consistent pattern of eighth notes on the snare and bass drum, with a double bar line and a repeat sign above the first measure. The piano part (Piano) consists of a simple harmonic progression of whole notes. The acoustic guitar (Chitarra Acust.) plays a melodic line with eighth notes and some accidentals. The distorted guitar (Chitarra Distort.) provides a rhythmic accompaniment with chords and single notes. The bass (Basso) follows a similar harmonic line to the piano.

109

Batteria

Piano

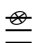
Chitarra Acust.

Chitarra Distort.

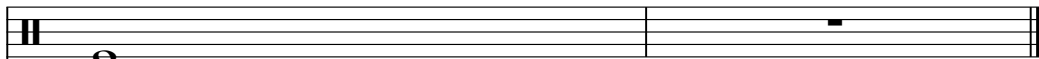
Basso

Detailed description: This system of music covers measures 109, 110, and 111. The drum part (Batteria) continues with the same pattern as the previous system. The piano part (Piano) maintains its harmonic progression. The acoustic guitar (Chitarra Acust.) continues its melodic line. The distorted guitar (Chitarra Distort.) and bass (Basso) parts also continue their respective parts, with some changes in chord voicings and melodic movement.



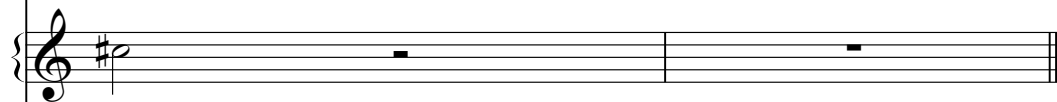
111 

Batteria



A single musical staff for the drum set. It features a single note on the first line, which is a half note with a stem pointing downwards.

Piano



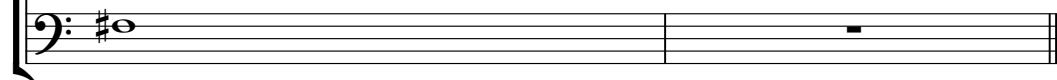
A musical staff for the piano. It begins with a treble clef and a sharp sign (#) on the first line. A single note is written on the first line, which is a half note with a stem pointing downwards.

Chitarra Distort.



A musical staff for distorted guitar. It begins with a treble clef and a sharp sign (#) on the first line. The staff contains a sequence of notes: a quarter note on the first line, a quarter note on the second line, a half note on the second line, and a quarter note on the second line. The notes are beamed together.

Basso



A musical staff for the bass. It begins with a bass clef and a sharp sign (#) on the first line. A single note is written on the first line, which is a half note with a stem pointing downwards.

# Him - Resurrection

Batteria

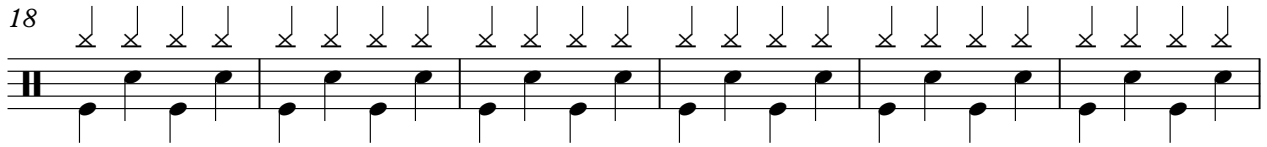
♩ = 120,000000  
8



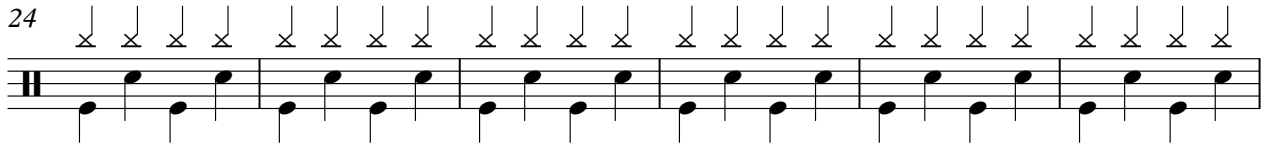
13



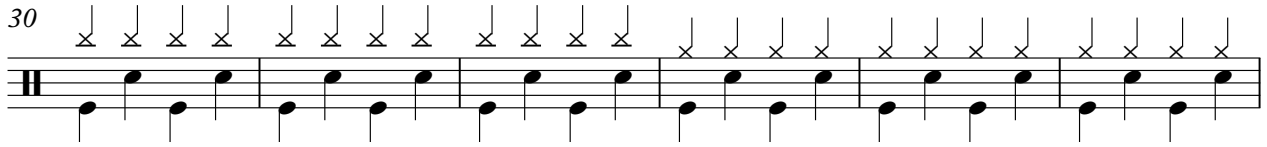
18



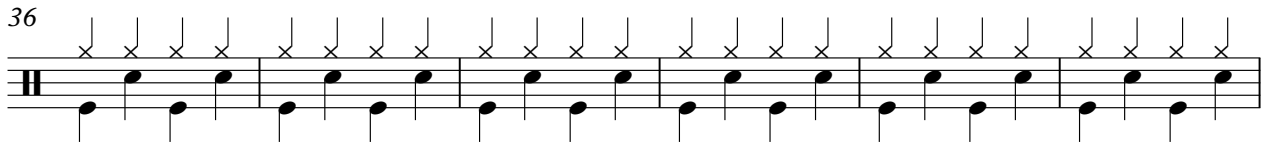
24



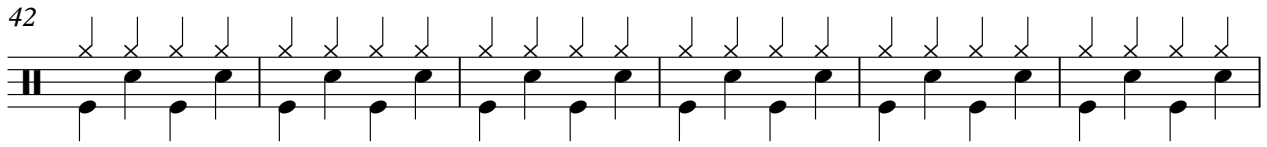
30



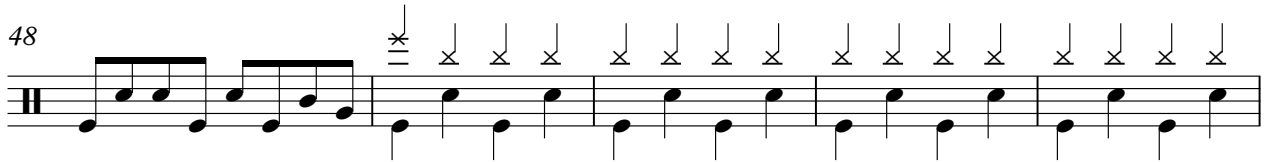
36



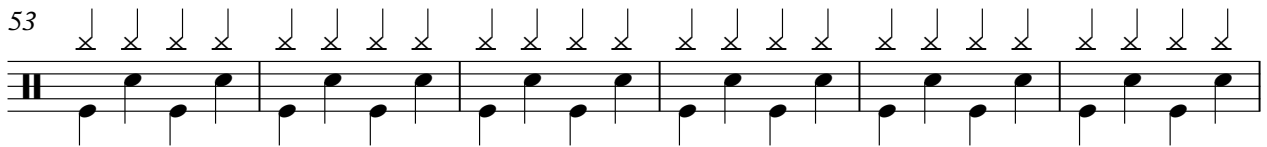
42



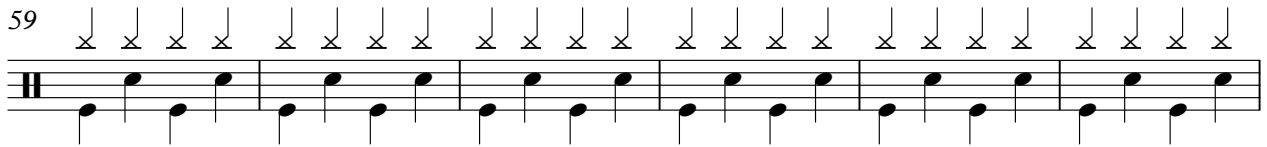
48



53



59



Copyright © 2001 by tita

V.S.

65



70



75



79



84



90



96



101



105



109



Piano

Him - Resurrection

♩ = 120,000000

16

22

29 16

50

57

64

71

78

85

92

2

Piano

99



106



♩ = 120,000000

16

20

24

28

32

16

51

55

59

63

67

Detailed description: The image shows a musical score for acoustic guitar in 4/4 time. The tempo is marked as ♩ = 120,000000. The score consists of ten staves of music. The first staff begins with a 16-measure rest, indicated by a thick black bar and the number '16'. The melody is a repeating eighth-note pattern: G4 (quarter), A4 (quarter), B4 (quarter), C5 (quarter), B4 (quarter), A4 (quarter), G4 (quarter), F#4 (quarter), G4 (quarter), A4 (quarter), B4 (quarter), C5 (quarter), B4 (quarter), A4 (quarter), G4 (quarter), F#4 (quarter). This pattern repeats every 4 measures. A second 16-measure rest occurs at the beginning of the fifth staff. The score ends at measure 67.



Chitarra Acust.

109





# Him - Resurrection

Chitarra Distort.

♩ = 120,000000

8

14

22

31

36

40

44

48

57

64

3

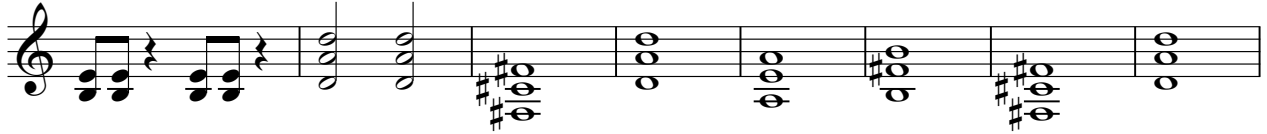
3

Copyright © 2001 by tita

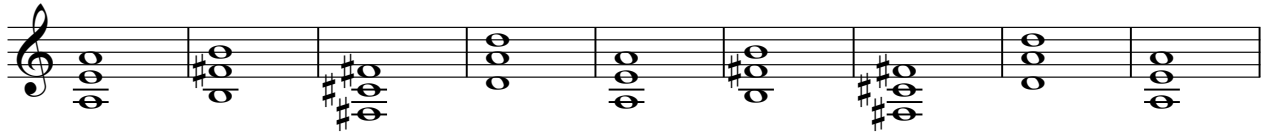
73



79



87



96



102



107



# Him - Resurrection

Basso

♩ = 120,000000

8



14



19



23



27



31



35



39



43



47



Copyright © 2001 by tita

V.S.

51



55



59



63



70



78



82



86



90



94



99



105



109



♩ = 120,000000

8

15 2 4

27 2

36

43 2

52 4

63 20 4

91 18