

Led Zeppelin - Going to California

$\text{♩} = 150,000000$

The image displays a musical score for the song "Going to California" by Led Zeppelin. It is arranged for two guitarists and a vocalist. The score is divided into three systems, each containing four staves. The first system shows the initial two measures, with both guitarists playing a rhythmic pattern of eighth notes. The second system starts at measure 5, where the two guitarists continue their pattern, while the two guitarists labeled "Guitar 1" remain silent until measure 8, when they enter with a melodic line. The third system starts at measure 9, with the two guitarists continuing their pattern and the two guitarists labeled "Guitar 1" playing a melodic line. The vocal line enters at measure 9 with a simple melody. The key signature is one sharp (F#) and the time signature is 4/4. A tempo marking of $\text{♩} = 150,000000$ is provided at the top.

Guitar 2

Guitar 2

Guitar 2

Guitar 2

Guitar 1

Guitar 1

Guitar 2

Guitar 2

Guitar 1

Guitar 1

Vocal

13

Guitar 2

Guitar 2

Guitar 1

Guitar 1

Vocal

17

Guitar 2

Guitar 2

Guitar 1

Guitar 1

Vocal

21

Guitar 2

Guitar 2

Guitar 1

Guitar 1

Vocal

25

Guitar 2

Guitar 2

Guitar 1

Guitar 1

Vocal

29

Guitar 2

Guitar 2

Guitar 1

Guitar 1

Vocal

33

Guitar 2

Guitar 2

Guitar 1

Guitar 1

37

Guitar 2

Guitar 2

Guitar 1

Guitar 1

41

Guitar 2

Guitar 2

Guitar 1

Guitar 1

Vocal

45

Guitar 2

Guitar 2

Guitar 1

Guitar 1

Vocal

49

Guitar 2
Guitar 2
Guitar 1
Guitar 1
Vocal

53

Guitar 2
Guitar 2
Guitar 1
Guitar 1
Vocal

56

Guitar 2

Guitar 2

Guitar 1

Guitar 1

Vocal

59

Guitar 2

Guitar 2

Guitar 1

Guitar 1

Vocal

63

Guitar 2

Guitar 2

Guitar 1

Guitar 1

Vocal

66

Guitar 2

Guitar 2

Guitar 1

Guitar 1

Vocal

69

Guitar 2

Guitar 2

Guitar 1

Guitar 1

Vocal

72

Guitar 2

Guitar 2

Guitar 1

Guitar 1

Vocal

76

Guitar 2

Guitar 2

Guitar 1

Guitar 1

Vocal

80

Guitar 2

Guitar 2

Guitar 1

Guitar 1

Vocal

84

Guitar 2

Guitar 2

Guitar 1

Guitar 1

This musical score block covers measures 84, 85, and 86. It features four staves: two for Guitar 2 and two for Guitar 1. The key signature is two sharps (F# and C#). The top two staves (Guitar 2) have a melody of dotted quarter notes and eighth notes. The bottom two staves (Guitar 1) play a rhythmic accompaniment with eighth and sixteenth notes. There are no vocal parts in this section.

87

Guitar 2

Guitar 2

Guitar 1

Guitar 1

Vocal

This musical score block covers measures 87, 88, and 89. It features five staves: two for Guitar 2, two for Guitar 1, and one for Vocal. The key signature remains two sharps. The guitar parts continue with their respective melodic and rhythmic lines. The vocal part enters in measure 87 with a melody of quarter and eighth notes.

91

Guitar 2

Guitar 2

Guitar 1

Guitar 1

Vocal

94

Guitar 2

Guitar 2

Guitar 1

Guitar 1

Vocal

98

Guitar 2

Guitar 2

Guitar 1

Guitar 1

Vocal

101

Guitar 2

Guitar 2

Guitar 1

Guitar 1

Vocal

105

Guitar 2

Guitar 2

Guitar 1

Guitar 1

Vocal

108

Guitar 2

Guitar 2

Guitar 1

Guitar 1

Vocal

112

Guitar 2

Guitar 2

Guitar 1

Guitar 1

This musical system covers measures 112 to 115. It features two guitar parts, labeled 'Guitar 2' and 'Guitar 1'. The key signature has two sharps (F# and C#). The notation is in treble clef. The 'Guitar 2' parts consist of two staves with melodic lines, including eighth and sixteenth notes, and some rests. The 'Guitar 1' parts also consist of two staves, primarily providing a harmonic accompaniment with chords and moving bass lines. Measure 112 starts with a treble clef and a key signature of two sharps.

116

Guitar 2

Guitar 2

Guitar 1

Guitar 1

This musical system covers measures 116 to 119. It features two guitar parts, labeled 'Guitar 2' and 'Guitar 1'. The key signature has two sharps (F# and C#). The notation is in treble clef. The 'Guitar 2' parts consist of two staves with melodic lines, including eighth and sixteenth notes, and some rests. The 'Guitar 1' parts also consist of two staves, primarily providing a harmonic accompaniment with chords and moving bass lines. Measure 116 starts with a treble clef and a key signature of two sharps.

120

Guitar 2

Guitar 2

Guitar 1

Guitar 1

This musical system covers measures 120 to 123. It features two guitar parts, labeled 'Guitar 2' and 'Guitar 1'. The key signature has two sharps (F# and C#). The notation is in treble clef. The 'Guitar 2' parts consist of two staves with melodic lines, including eighth and sixteenth notes, and some rests. The 'Guitar 1' parts also consist of two staves, primarily providing a harmonic accompaniment with chords and moving bass lines. Measure 120 starts with a treble clef and a key signature of two sharps.

123

Guitar 2

Guitar 2

Guitar 1

Guitar 1

Detailed description: This system contains measures 123, 124, and 125. It features four staves. The top two staves are labeled 'Guitar 2' and the bottom two are 'Guitar 1'. The top two staves use a treble clef and the bottom two use a bass clef. The key signature has two sharps (F# and C#). The music consists of rhythmic patterns with eighth and sixteenth notes, often beamed together, and includes some rests.

126

Guitar 2

Guitar 2

Guitar 1

Guitar 1

Detailed description: This system contains measures 126, 127, and 128. It features four staves. The top two staves are labeled 'Guitar 2' and the bottom two are 'Guitar 1'. The top two staves use a treble clef and the bottom two use a bass clef. The key signature has two sharps (F# and C#). The music continues with rhythmic patterns similar to the previous system, including beamed eighth notes and sixteenth notes.

129

Guitar 2

Guitar 2

Guitar 1

Guitar 1

Detailed description: This system contains measures 129, 130, and 131. It features four staves. The top two staves are labeled 'Guitar 2' and the bottom two are 'Guitar 1'. The top two staves use a treble clef and the bottom two use a bass clef. The key signature has two sharps (F# and C#). The music continues with rhythmic patterns, including beamed eighth notes and sixteenth notes.

133

Guitar 2

Guitar 2

Guitar 1

Guitar 1

Led Zeppelin - Going to California

Guitar 2

♩ = 150,000000

6

10

15

20

25

30

34

39

44

V.S.

Musical score for Guitar 2, measures 49-95. The score is written in treble clef with a key signature of one sharp (F#) and a common time signature (C). The music consists of a continuous melodic line in the upper voice and a supporting bass line in the lower voice. The melodic line features a mix of eighth and quarter notes, often beamed together. The bass line consists of a steady eighth-note accompaniment, with some measures featuring a dotted quarter note followed by an eighth note. The score is divided into systems, with measure numbers 49, 54, 59, 64, 69, 74, 80, 85, 90, and 95 marking the beginning of each system.

100

Musical notation for guitar 2, measures 100-104. The staff shows a melody of quarter notes and eighth notes with a consistent accompaniment of chords and eighth notes.

105

Musical notation for guitar 2, measures 105-109. The melody continues with quarter notes and eighth notes, and the accompaniment remains consistent.

110

Musical notation for guitar 2, measures 110-114. The melody features a more complex rhythmic pattern with eighth notes and sixteenth notes, while the accompaniment stays consistent.

115

Musical notation for guitar 2, measures 115-119. The melody continues with eighth and sixteenth notes, and the accompaniment remains consistent.

120

Musical notation for guitar 2, measures 120-124. The melody consists of quarter notes and eighth notes, with a consistent accompaniment.

125

Musical notation for guitar 2, measures 125-129. The melody continues with quarter notes and eighth notes, and the accompaniment remains consistent.

130

Musical notation for guitar 2, measures 130-132. The melody continues with quarter notes and eighth notes, and the accompaniment remains consistent.

133

Musical notation for guitar 2, measures 133-137. The melody continues with quarter notes and eighth notes, and the accompaniment remains consistent, ending with a double bar line.

Led Zeppelin - Going to California

Guitar 2

♩ = 150,000000

6

10

15

20

25

30

34

39

44

V.S.

Musical score for Guitar 2, measures 49-95. The score is written in treble clef with a key signature of one sharp (F#) and a common time signature (C). The music consists of ten staves of notation. Measures 49-63 show a continuous eighth-note pattern in the right hand and a steady bass line in the left hand. Measures 64-68 continue this pattern. Measure 69 introduces a melodic line in the right hand. Measures 70-73 continue the melodic line. Measures 74-79 show a melodic line in the right hand and a bass line in the left hand. Measures 80-84 show a melodic line in the right hand and a bass line in the left hand. Measures 85-89 show a melodic line in the right hand and a bass line in the left hand. Measures 90-94 show a melodic line in the right hand and a bass line in the left hand. Measure 95 shows a melodic line in the right hand and a bass line in the left hand.

100

105

110

115

120

125

130

133

Led Zeppelin - Going to California

Guitar 1

♩ = 150,000000

7

12

16

21

25

30

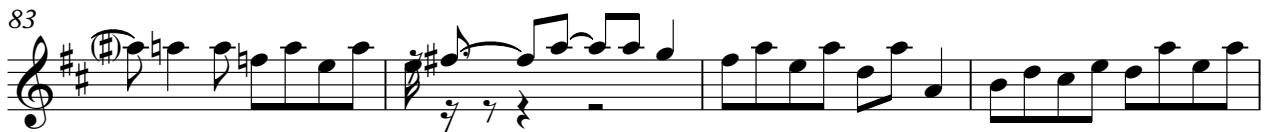
34

38

42

47

V.S.



95



Led Zeppelin - Going to California

Guitar 1

♩ = 150,000000

7

12

16

21

25

30

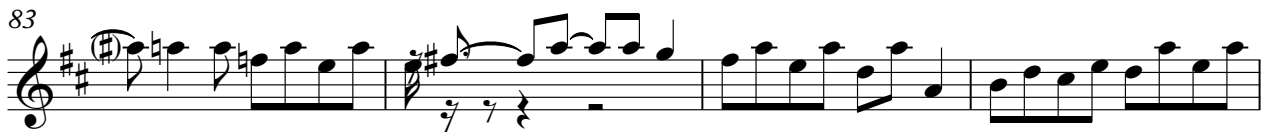
34

38

42

47

V.S.



Led Zeppelin - Going to California

Vocal

♩ = 150,000000

8

13

3

3

13

44

49

2

55

61

3

68

71

3

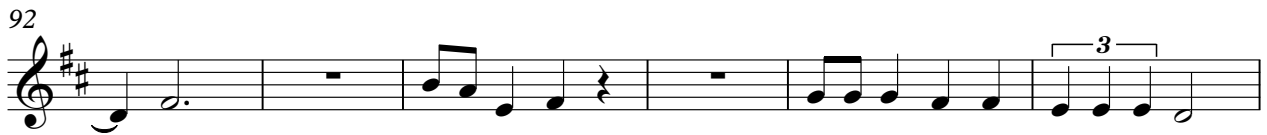
76



81




92



98



104



108

