

Marvin Gaye - I Heard It Through the Grapevine

00:00:03:00  
1.1,00  
I HEARD IT FROM THE GRAPEVINE - Marvin Gaye  
♩ = 120,000000

Drums  
Piano  
Guitar  
Organ



5  
Alto Sax\*copied  
Alto Sax\*copied  
Drums  
Piano  
Guitar  
Bass  
Organ  
Alto Sax\*copied



9  
Drums  
Piano  
Guitar  
Bass  
Organ

13

Alto Sax\*copied

Alto Sax\*copied

Drums

Piano

Guitar

Bass

Organ

Alto Sax\*copied



17

Drums

Piano

Guitar

Bass

Melody



21

Drums

Piano

Bass

Melody

25

Drums

Piano

Guitar

Bass

Organ

Melody



29

Drums

Piano

Guitar

Bass

Organ

Melody



33

Drums

Piano

Guitar

Bass

Organ

Melody

37

Drums

Piano

Guitar

Bass

Organ

Melody



40

Alto Sax\*copied

Alto Sax\*copied

Drums

Piano

Guitar

Bass

Organ

Alto Sax\*copied

43

Alto Sax\*copied

Alto Sax\*copied

Drums

Piano

Guitar

Bass

Organ

Melody

Alto Sax\*copied



47

Drums

Piano

Bass

Melody



51

Drums

Piano

Bass

Organ

Melody

55

Drums  
Piano  
Guitar  
Bass  
Organ  
Melody

This system contains measures 55 through 58. The drums play a consistent pattern of eighth notes. The piano part features a complex chordal texture with many accidentals. The guitar part is mostly silent, with some chords appearing in measures 57 and 58. The bass line is a steady eighth-note pattern. The organ plays sustained chords, and the melody consists of eighth-note runs.



59

Drums  
Piano  
Guitar  
Bass  
Organ  
Melody

This system contains measures 59 through 62. The drums continue their pattern. The piano part has a more active role with frequent chord changes. The guitar part has some rhythmic activity in measure 60. The bass line remains consistent. The organ and melody parts continue their respective parts from the previous system.



63

Drums  
Piano  
Guitar  
Bass  
Organ  
Melody

This system contains measures 63 through 66. The drums play a pattern that includes some triplet markings. The piano part continues with complex chords. The guitar part has some rhythmic activity. The bass line continues its eighth-note pattern. The organ and melody parts continue their respective parts from the previous system.

67 7

Drums

Piano

Guitar

Bass

Organ



70

Alto Sax\*copied

Alto Sax\*copied

Drums

Piano

Guitar

Bass

Organ

Melody

Alto Sax\*copied



73

Drums

Piano

Guitar

Bass

Melody

77

Drums

Piano

Bass

Melody

Detailed description: This system covers measures 77 to 80. The Drums part features a consistent pattern of eighth notes. The Piano part consists of chords and arpeggiated figures. The Bass part provides a steady accompaniment with eighth notes. The Melody part has a sparse line with some rests.



81

Drums

Piano

Guitar

Bass

Organ

Melody

Detailed description: This system covers measures 81 to 84. The Drums part continues with eighth notes. The Piano part has more complex chordal textures. The Guitar part is mostly silent with some final notes at the end. The Bass part continues its accompaniment. The Organ part has sustained chords. The Melody part continues its sparse line.



85

Drums

Piano

Guitar

Bass

Organ

Melody

Detailed description: This system covers measures 85 to 88. The Drums part continues with eighth notes. The Piano part has more complex chordal textures. The Guitar part has some active lines. The Bass part continues its accompaniment. The Organ part has sustained chords. The Melody part continues its sparse line.



89

Drums  
Piano  
Bass  
Organ  
Melody

This system contains measures 89 through 92. The drums play a consistent pattern of eighth notes. The piano and organ provide a harmonic accompaniment with chords and arpeggios. The bass line follows a steady eighth-note pattern. The melody line features a simple eighth-note sequence.



93

Drums  
Piano  
Guitar  
Bass  
Organ  
Melody

This system contains measures 93 through 95. The drums feature triplet patterns. The guitar part is active, playing chords and arpeggios. The piano and organ continue their accompaniment. The bass line remains steady. The melody line is mostly silent in this section.



96

Drums  
Piano  
Guitar  
Bass  
Organ  
Melody

This system contains measures 96 through 98. The drums play a pattern with triplet accents. The guitar part continues with complex chordal textures. The piano and organ provide accompaniment. The bass line is steady. The melody line resumes with a simple eighth-note pattern.

99

Drums

Piano

Guitar

Bass

Organ

Melody



102

Drums

Piano

Guitar

Bass

Organ

Melody

Alto Sax\*copied

# Marvin Gaye - I Heard It Through the Grapevine

♩ = 120,000000

5

5

Detailed description: This is the first line of musical notation. It starts with a treble clef, a key signature of three sharps (F#, C#, G#), and a 4/4 time signature. Above the staff, the tempo is indicated as ♩ = 120,000000. The first measure is a whole rest, with a large '5' above it. The second measure contains a quarter rest, a quarter note G#4, and a quarter note A4. The third measure has a quarter note G#4, a quarter note A4, and a quarter note B4, all under a slur. The fourth measure has a quarter note B4, a quarter note A4, and a quarter note G#4, also under a slur. The fifth measure is a whole rest, with another large '5' above it.

14

25

Detailed description: This is the second line of musical notation, starting at measure 14. The first measure is a quarter rest, a quarter note G#4, and a quarter note A4. The second measure has a quarter note G#4, a quarter note A4, and a quarter note B4, under a slur. The third measure has a quarter note B4, a quarter note A4, and a quarter note G#4, under a slur. The fourth measure is a whole rest, with a large '25' above it. The fifth measure is a quarter rest, a quarter note G#4, and a quarter note A4.

43

25

Detailed description: This is the third line of musical notation, starting at measure 43. The first measure has a quarter note G#4, a quarter note A4, and a quarter note B4, under a slur. The second measure has a quarter note B4, a quarter note A4, and a quarter note G#4, under a slur. The third measure is a whole rest, with a large '25' above it. The fourth measure is a quarter rest, a quarter note G#4, and a quarter note A4. The fifth measure is a quarter rest, a quarter note G#4, and a quarter note A4.

71

33

Detailed description: This is the fourth and final line of musical notation, starting at measure 71. The first measure has a quarter note G#4, a quarter note A4, and a quarter note B4, under a slur. The second measure has a quarter note B4, a quarter note A4, and a quarter note G#4, under a slur. The third measure is a whole rest, with a large '33' above it. The fourth measure is a whole rest. The fifth measure is a whole rest.

Alto Sax\*copied

Marvin Gaye - I Heard It Through the Grapevine

♩ = 120,000000

5

14

25

43

25

71

33

# Marvin Gaye - I Heard It Through the Grapevine

## Drums

♩ = 120,000000

Musical notation for the first staff of the drum part, measures 1-6. The staff is in 4/4 time and contains a series of quarter notes with 'x' marks above them, indicating a specific drum pattern.

7

Musical notation for the second staff of the drum part, measures 7-10. This section includes a triplet of eighth notes and various rests.

11

Musical notation for the third staff of the drum part, measures 11-14. This section features a complex rhythmic pattern with many 'x' marks.

15

Musical notation for the fourth staff of the drum part, measures 15-18. This section continues the rhythmic pattern with various note values and rests.

19

Musical notation for the fifth staff of the drum part, measures 19-22. This section includes a triplet of eighth notes and various rests.

23

Musical notation for the sixth staff of the drum part, measures 23-25. This section continues the rhythmic pattern with various note values and rests.

26

Musical notation for the seventh staff of the drum part, measures 26-28. This section features a complex rhythmic pattern with many 'x' marks.

29

Musical notation for the eighth staff of the drum part, measures 29-32. This section includes a triplet of eighth notes and various rests.

33

Musical notation for the ninth staff of the drum part, measures 33-36. This section continues the rhythmic pattern with various note values and rests.

37

Musical notation for the tenth staff of the drum part, measures 37-40. This section includes a triplet of eighth notes and various rests.

V.S.

2

Drums

40

43

46

50

54

57

61

65

68

71

74

78

82

85

89

93

96

99

102

Marvin Gaye - I Heard It Through the Grapevine

Piano

♩ = 120,000000

4

7

10

13

16

20

25

28

V.S.



31



35



38



41



44



48



53



56



59



63



66

69

72

76

81

84

87

91

94

97

V.S.

100



103



Marvin Gaye - I Heard It Through the Grapevine

Guitar

♩ = 120,000000

3

7

10

13

16

9

29

34

38

42

44

10

Guitar

56

61

65

69

73

10

87

5

95

98

101

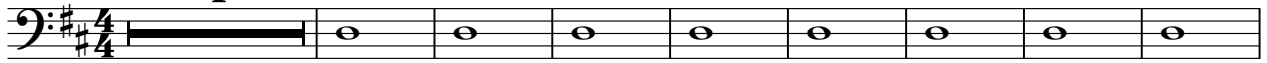
103

# Marvin Gaye - I Heard It Through the Grapevine

Bass

♩ = 120,000000

4



13



19



23



27



31



35



39



44

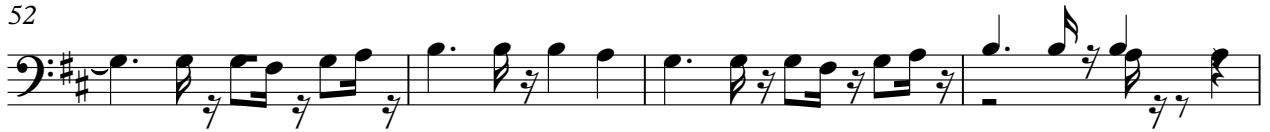


48



V.S.

52



56



60



64



68



72



76



80



84



88



92



96



100



103





Organ

Marvin Gaye - I Heard It Through the Grapevine

♩ = 120,000000

3

3

6

9

13

15

8

25

32

38

42

55

61

66

70

83

89

94

Musical notation for measure 94, featuring a treble clef, a key signature of one sharp (F#), and a series of chords and notes. The notation includes a treble clef, a key signature of one sharp (F#), and a series of chords and notes. The measure contains a sequence of chords and notes, including a whole note chord, a half note chord, and a quarter note chord, followed by a series of eighth notes and a final quarter note chord.

98

Musical notation for measure 98, featuring a treble clef, a key signature of one sharp (F#), and a series of chords and notes. The notation includes a treble clef, a key signature of one sharp (F#), and a series of chords and notes. The measure contains a sequence of chords and notes, including a whole note chord, a half note chord, and a quarter note chord, followed by a series of eighth notes and a final quarter note chord.

102

Musical notation for measure 102, featuring a treble clef, a key signature of one sharp (F#), and a series of chords and notes. The notation includes a treble clef, a key signature of one sharp (F#), and a series of chords and notes. The measure contains a sequence of chords and notes, including a whole note chord, a half note chord, and a quarter note chord, followed by a series of eighth notes and a final quarter note chord.

# Marvin Gaye - I Heard It Through the Grapevine

## Melody

♩ = 120,000000

**16**

20

24

29

33

37

**6**

47

52

56

60

V.S.

64

6

74

79

84

88

92

2

98

101

2

♩ = 120,000000

5

5

14

25

43

25

71

33