

Mary Hopkins - Those Were the Days

0.0"
1.1,00
Sequenced by Darla

♩ = 89,999954

♩ = 89,999954

Musical score for the first system of 'Those Were the Days'. The score is in 4/4 time and consists of five staves: Percussion, Acoustic Guitar, Fretless Bass, String Ensemble, and Seq by Darla. The Percussion staff shows a simple drum pattern with 'x' marks. The Acoustic Guitar staff has a treble clef and a key signature of one sharp (F#). The Fretless Bass staff has a bass clef. The String Ensemble staff has a bass clef and a key signature of one sharp. The Seq by Darla staff has a treble clef and a key signature of one sharp. The tempo is marked as ♩ = 89,999954.

Musical score for the second system of 'Those Were the Days'. The score continues from the first system and consists of four staves: Acoustic Guitar, Fretless Bass, String Ensemble, and Seq by Darla. The Acoustic Guitar staff has a treble clef and a key signature of one sharp. The Fretless Bass staff has a bass clef. The String Ensemble staff has a bass clef and a key signature of one sharp. The Seq by Darla staff has a treble clef and a key signature of one sharp. The tempo is marked as ♩ = 89,999954.

5

Acoustic Guitar

Fretless Bass

String Ensemble

Seq by Darla

6

Acoustic Guitar

Fretless Bass

String Ensemble

Seq by Darla

7

Acoustic Guitar

Fretless Bass

String Ensemble

Seq by Darla

8 3

Acoustic Guitar

Fretless Bass

String Ensemble

Seq by Darla

10 ♩ = 78,9999 69 100,0000 69 78,9999

Percussion

Acoustic Guitar

Fretless Bass

String Ensemble

Acoustic Grand Piano

Seq by Darla

12

Percussion

Acoustic Guitar

Fretless Bass

Acoustic Grand Piano

16

Percussion

Acoustic Guitar

Fretless Bass

Acoustic Grand Piano

21

Percussion

Acoustic Guitar

Fretless Bass

Acoustic Grand Piano

25 $\text{♩} = 120,000000$

Percussion

Acoustic Guitar

Fretless Bass

Accoustic Grand Piano

$\text{♩} = 120,000000$

29

Percussion

Acoustic Guitar

Fretless Bass

Accoustic Grand Piano

34

Percussion

Acoustic Guitar

Fretless Bass

Accoustic Grand Piano

36

Percussion

Acoustic Guitar

Fretless Bass

Accoustic Grand Piano

38

Percussion

Acoustic Guitar

Fretless Bass

Accoustic Grand Piano

40

Percussion

Acoustic Guitar

Fretless Bass

Accoustic Grand Piano

42 7

Percussion

Acoustic Guitar

Fretless Bass

Accoustic Grand Piano

45 5

Percussion

Acoustic Guitar

Fretless Bass

Accoustic Grand Piano

50 5

Percussion

Acoustic Guitar

Fretless Bass

Accoustic Grand Piano

55

Percussion

Acoustic Guitar

Fretless Bass

Acoustic Grand Piano

60

Percussion

Acoustic Guitar

Fretless Bass

Acoustic Grand Piano

$\text{♩} = 127,500061$

65

Percussion

Acoustic Guitar

Fretless Bass

Acoustic Grand Piano

68

Percussion

Acoustic Guitar

Fretless Bass

Acoustic Grand Piano

70

Percussion

Acoustic Guitar

Fretless Bass

Acoustic Grand Piano

72

$\text{♩} = 128,000000$

Percussion

Acoustic Guitar

Fretless Bass

$\text{♩} = 128,000000$

Acoustic Grand Piano

74

Percussion

Acoustic Guitar

Fretless Bass

Accoustic Grand Piano

76

Percussion

Acoustic Guitar

Fretless Bass

Accoustic Grand Piano

♩ = 127,469994

81

Percussion

Acoustic Guitar

Fretless Bass

Accoustic Grand Piano

86

Percussion

Acoustic Guitar

Fretless Bass

Accoustic Grand Piano

91

Percussion

Acoustic Guitar

Fretless Bass

Accoustic Grand Piano

96

Percussion

Acoustic Guitar

Fretless Bass

Accoustic Grand Piano

100

Percussion

Acoustic Guitar

Fretless Bass

Accoustic Grand Piano

102

Percussion

Acoustic Guitar

Fretless Bass

Accoustic Grand Piano

104

Percussion

Acoustic Guitar

Fretless Bass

Accoustic Grand Piano

106 13

Percussion

Acoustic Guitar

Fretless Bass

Acoustic Grand Piano

Detailed description: This system covers measures 106 to 108. The Percussion part features a consistent rhythmic pattern of eighth notes with 'x' marks above them. The Acoustic Guitar part has a melodic line with some rests and a 7/4 time signature change at the end. The Fretless Bass part provides a steady bass line. The Acoustic Grand Piano part has a complex, multi-voiced texture with many beamed notes.

109

Percussion

Acoustic Guitar

Fretless Bass

Acoustic Grand Piano

Detailed description: This system covers measures 109 to 112. The Percussion part continues with the eighth-note pattern. The Acoustic Guitar part has a more active melodic line. The Fretless Bass part continues with a steady bass line. The Acoustic Grand Piano part has a complex, multi-voiced texture with many beamed notes.

113

Percussion

Acoustic Guitar

Fretless Bass

Acoustic Grand Piano

Detailed description: This system covers measures 113 to 116. The Percussion part continues with the eighth-note pattern. The Acoustic Guitar part has a melodic line with some rests. The Fretless Bass part continues with a steady bass line. The Acoustic Grand Piano part has a complex, multi-voiced texture with many beamed notes.

117

Percussion

Acoustic Guitar

Fretless Bass

Acoustic Grand Piano

122

Percussion

Acoustic Guitar

Fretless Bass

Acoustic Grand Piano

126

Percussion

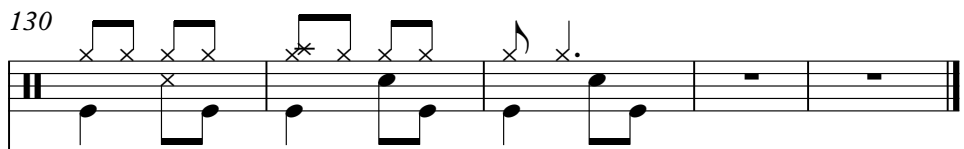
Acoustic Guitar

Fretless Bass

Acoustic Grand Piano

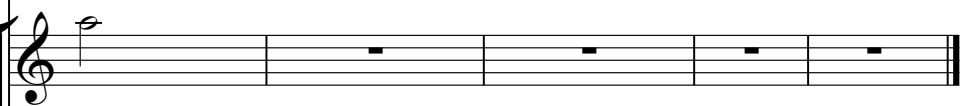
130

Percussion



The percussion staff features a series of rhythmic patterns. It begins with a double bar line, followed by a sequence of eighth notes with 'x' marks above them, indicating specific percussive sounds. The pattern includes eighth notes, eighth rests, and quarter notes, ending with a quarter rest.

Acoustic Guitar



The acoustic guitar staff starts with a treble clef and a single eighth note, followed by several measures of whole rests.

Fretless Bass



The fretless bass staff uses a bass clef and contains a melodic line of eighth and quarter notes, ending with a quarter rest.

String Ensemble



The string ensemble staff uses a bass clef and features chordal textures with some notes beamed together, interspersed with whole rests.

Acoustic Grand Piano



The acoustic grand piano staff uses a treble clef and contains chordal textures with some notes beamed together, interspersed with whole rests.

Mary Hopkins - Those Were the Days

Percussion

♩ = 89,999954 ♩ = 89,999954

9

16

24 ♩ = 120,000000

32

37

41 ♩ = 99985

46

54 ♩ = 127,500061

62

V.S.

Percussion

68

♩ = 128,000000

72

76

♩ = 127,469994

84

92

99

103

107

114

122

Percussion

128

Musical notation for Percussion, measures 128-131. The notation is written on a five-line staff. Measures 128-130 feature a rhythmic pattern of eighth notes with 'x' marks above them, indicating a specific percussive sound. Measure 131 contains a single eighth note followed by a quarter rest. A double bar line is present at the end of measure 131, with a large number '2' positioned above the staff, indicating the start of a new section.

Mary Hopkins - Those Were the Days

Acoustic Guitar

♩ = 89,999954 ♩ = 89,999954

2

7

12

21 ♩ = 120,000000

29

36

41

47

56 ♩ = 127,500061

65

V.S.

68



73



80



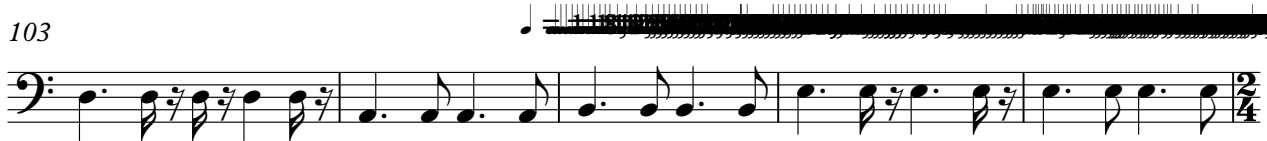
90



99



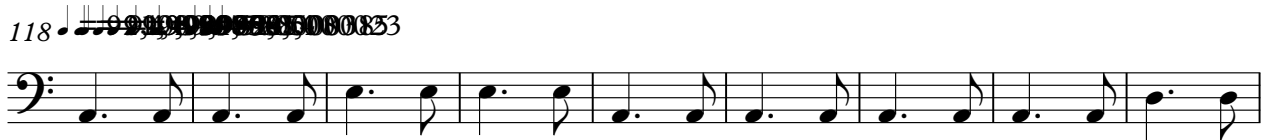
103



108



118



127



String Ensemble

Mary Hopkins - Those Were the Days

♩ = 89,999954 ♩ = 89,999954

2

9

14 9

35

6 16 7

67

5 2 2

80

19 5

109

118

12 2

Acoustic Grand Piano

Mary Hopkins - Those Were the Days

♩ = 89,999954 = 89,999954

2

11 ♩ = 89,999954 = 89,999954

16

24 ♩ = 120,000000

30

36

40

44 ♩ = 89,999985

52

60 ♩ = 127,500061

V.S.

Musical score for Acoustic Grand Piano, measures 67-118. The score is written in treble clef with a 4/4 time signature. It features complex chordal textures and melodic lines. Measure numbers 67, 71, 75, 81, 90, 98, 102, 106, 111, and 118 are indicated at the start of their respective staves. Performance markings include a tempo of 128,000000 (♩ = 128,000000) and a tempo of 127,469994 (♩ = 127,469994). There are several instances of blacked-out text, likely representing obscured performance instructions or copyright information.

125



129



Mary Hopkins - Those Were the Days

Seq by Darla

♩ = 89,999954 ♩ = 89,999954

2

5

7

10

♩ = 78,99996100,000000 ♩ = 120,000

14 9

35

6 16 7 ♩ = 127,5000

67

5 ♩ = 128,000000 ♩ = 127,469994 2 2

80

19 5

109

116

♩ = 88,500025 16