



# MXPX - Chickmagnet

♩ = 167,999939

Guitar



Bass



5

Drums



Guitar



Guitar

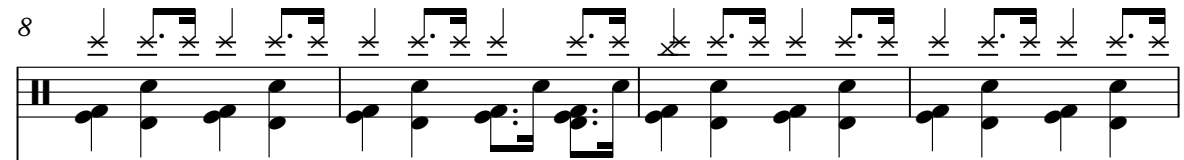


Bass

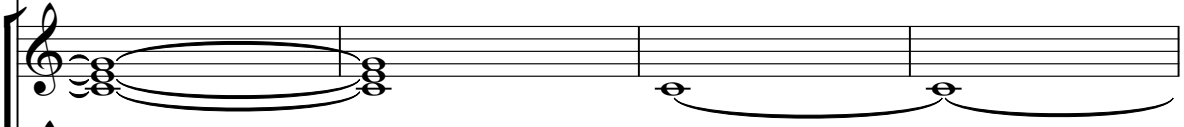


8

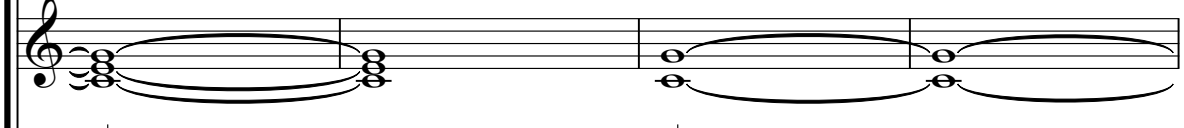
Drums




Guitar



Guitar



Bass



12

Vocal

Drums

Guitar

Guitar

Bass

This system covers measures 12 through 15. The vocal line begins with a whole rest in measure 12, followed by a melodic phrase in measures 13-15. The drum part maintains a consistent rhythmic pattern. The two guitar staves feature sustained chords, and the bass line provides a steady accompaniment.

16

Vocal

Drums

Guitar

Bass

This system covers measures 16 through 18. The vocal line has a melodic phrase in measure 16, a rest in measure 17, and another phrase in measure 18. The guitar part has a rest in measure 16, followed by a melodic phrase in measure 17 and a sustained chord in measure 18. The drum and bass parts continue their respective patterns.

19

Vocal

Drums

Guitar

Bass

This system covers measures 19 through 21. The vocal line has a melodic phrase in measure 19, a rest in measure 20, and another phrase in measure 21. The guitar part has a sustained chord in measure 19, followed by a melodic phrase in measure 20 and a rest in measure 21. The drum and bass parts continue their respective patterns.

22

Vocal

Drums

Guitar

Bass

Detailed description: This system covers measures 22, 23, and 24. The vocal line (treble clef) features a melodic line with eighth and quarter notes, including a triplet in measure 23. The drums (snare drum) play a consistent eighth-note pattern. The guitar (treble clef) plays a sustained chord with a long note in measure 22, followed by a similar chord in measure 23. The bass (bass clef) plays a steady eighth-note line.

25

Vocal

Drums

Guitar

Bass

Detailed description: This system covers measures 25, 26, and 27. The vocal line (treble clef) includes a triplet in measure 25 and another in measure 27. The drums (snare drum) continue with an eighth-note pattern. The guitar (treble clef) plays a sustained chord in measure 25, then a more active line in measure 26, and returns to a sustained chord in measure 27. The bass (bass clef) maintains its eighth-note line.

28

Vocal

Drums

Guitar

Guitar

Bass

Detailed description: This system covers measures 28, 29, and 30. The vocal line (treble clef) has a melodic line with eighth notes and a quarter note. The drums (snare drum) play a more complex eighth-note pattern. The guitar (treble clef) has a rest in measure 28, followed by a triplet in measure 29 and another triplet in measure 30. A second guitar part (treble clef) plays a complex rhythmic pattern in measure 30. The bass (bass clef) continues with its eighth-note line.

31

Drums

Guitar

Guitar

Bass

34

Drums

Guitar

Guitar

Bass

37

Vocal

Drums

Guitar

Guitar

Bass

40

Vocal

Drums

Guitar

Guitar

Bass

43

Vocal

Drums

Guitar

Guitar

Bass

46

Vocal

Drums

Guitar

Guitar

Bass

49

Vocal

Drums

Guitar

Guitar

Bass

52

Vocal

Drums

Guitar

Guitar

Bass

55

Drums

Guitar

Guitar

Bass

59

Vocal

Drums

Guitar

Bass

63

Vocal

Drums

Guitar

Bass

Detailed description: This system covers measures 63 to 65. The vocal line features a melodic sequence of eighth notes with accents, starting on a dotted quarter note. The drums play a consistent pattern of eighth notes. The guitar part is mostly silent, with a few notes appearing in measure 65. The bass line consists of a steady eighth-note accompaniment.

66

Vocal

Drums

Guitar

Bass

Detailed description: This system covers measures 66 to 68. The vocal line continues with eighth notes and accents. The drums maintain their eighth-note pattern. The guitar part features long, sustained notes in measures 67 and 68, indicated by large horizontal lines. The bass line continues with eighth notes.

69

Vocal

Drums

Guitar

Bass

Detailed description: This system covers measures 69 to 71. The vocal line has a more varied melodic line with some rests. The drums continue with eighth notes. The guitar part has long sustained notes in measures 70 and 71. The bass line remains an eighth-note accompaniment.



72

Vocal

Drums

Guitar

Bass

This system covers measures 72 to 74. The vocal line features a melodic phrase with eighth and quarter notes. The drums play a steady eighth-note pattern. The guitar has a melodic line with a long sustain in measures 73 and 74. The bass line follows a simple eighth-note pattern.

75

Vocal

Drums

Guitar

Guitar

Bass

This system covers measures 75 to 77. The vocal line continues with a melodic phrase. The drums play a steady eighth-note pattern. The guitar has a melodic line with a long sustain in measure 76 and a triplet in measure 77. The bass line follows a simple eighth-note pattern.

78

Drums

Guitar

Guitar

Bass

This system covers measures 78 to 80. The drums play a steady eighth-note pattern. The guitar has a melodic line with a long sustain in measure 79 and a triplet in measure 80. The bass line follows a simple eighth-note pattern.

81

Drums

Guitar

Guitar

Bass

84

Drums

Guitar

Guitar

Bass

87

Vocal

Drums

Guitar

Guitar

Bass

90

Vocal

Drums

Guitar

Guitar

Bass

93

Vocal

Drums

Guitar

Guitar

Bass

96

Vocal

Drums

Guitar

Guitar

Bass

99

Vocal

Drums

Guitar

Guitar

Bass

102

Vocal

Drums

Guitar

Guitar

Bass

105

Vocal

Drums

Guitar

Guitar

Bass

108

Vocal

Drums

Guitar

Guitar

Bass

Detailed description: This system of musical notation covers measures 108, 109, and 110. The vocal line (treble clef) begins with a quarter rest, followed by eighth notes G4, A4, B4, and C5. In measure 109, there are quarter notes D5, E5, and F5, followed by a quarter rest. In measure 110, there are quarter notes G5, A5, and B5. The drum line (snare drum) features a consistent pattern of quarter notes with 'x' marks above them, indicating a specific drum sound. A sixteenth-note triplet is marked with a '6' in measure 110. The guitar parts (two staves, treble clef) are mostly silent, with a final measure in 110 showing a sustained chord. The bass line (bass clef) plays a steady eighth-note pattern: G2, A2, B2, C3, D3, E3, F3, G3.

111

Vocal

Drums

Guitar

Guitar

Bass

Detailed description: This system of musical notation covers measures 111, 112, and 113. The vocal line (treble clef) has quarter notes G4, A4, B4, and C5 in measure 111, followed by a half note D5 in measure 112. In measure 113, there is a quarter rest, followed by a sixteenth-note triplet (E5, F5, G5) and a sixteenth-note sextuplet (A5, B5, C6, D6, E6, F6). The drum line (snare drum) continues with a pattern of quarter notes with 'x' marks. The guitar parts (two staves, treble clef) play sustained chords in measures 111 and 112, then become silent in measure 113. The bass line (bass clef) continues with the same eighth-note pattern as in the previous system.

115

Vocal

Drums

Guitar

Guitar

Bass

Detailed description: This musical score covers measures 115 to 117. The vocal line (treble clef) starts with a sixteenth-note run in measure 115, marked with a '6' and a slur. It continues with a half note in measure 116 and a quarter note in measure 117. The drums (snare drum) play a steady eighth-note pattern in measure 115, followed by a more complex pattern in measures 116 and 117, including triplets. The guitar parts (treble clef) are mostly silent in measure 115, with some muted notes in measures 116 and 117. The bass line (bass clef) plays a consistent eighth-note pattern throughout the three measures.

118

Vocal

Drums

Guitar

Guitar

Bass

Detailed description: This musical score covers measures 118 to 120. The vocal line (treble clef) has a half note in measure 118, a quarter note in measure 119, and a half note in measure 120. The drums (snare drum) play a consistent eighth-note pattern with a hi-hat in the background throughout all three measures. The guitar parts (treble clef) play a complex, rhythmic pattern of eighth notes in chords. The bass line (bass clef) plays a steady eighth-note pattern.

121

Vocal

Drums

Guitar

Guitar

Bass

124

Vocal

Drums

Guitar

Guitar

Bass



127

Vocal

Drums

Guitar

Guitar

Bass

Detailed description: This musical score block covers measures 127 to 130. It features five staves: Vocal, Drums, two Guitar staves, and Bass. The Vocal staff has a treble clef and contains a melodic line with rests and notes. The Drums staff has a double bar line and shows a consistent rhythmic pattern of eighth notes. The two Guitar staves have treble clefs and play a complex, multi-voiced accompaniment with many beamed notes. The Bass staff has a bass clef and plays a simple line of quarter notes.

130

Vocal

Drums

Guitar

Guitar

Bass

Detailed description: This musical score block covers measures 130 to 133. It features five staves: Vocal, Drums, two Guitar staves, and Bass. The Vocal staff has a treble clef and contains a melodic line with rests and notes. The Drums staff has a double bar line and shows a consistent rhythmic pattern of eighth notes. The two Guitar staves have treble clefs and play a complex, multi-voiced accompaniment with many beamed notes. The Bass staff has a bass clef and plays a simple line of quarter notes.

133

Vocal



Drums



Guitar



Guitar



Bass



The image shows a musical score for five instruments: Vocal, Drums, and two Guitars, plus a Bass line. The score is divided into five systems. The first system is for the Vocal part, starting with a treble clef and a key signature of one flat. The second system is for the Drums, starting with a double bar line and a key signature of one flat, featuring a complex rhythmic pattern with triplet markings. The third system is for the first Guitar, starting with a treble clef and a key signature of one flat, featuring a complex rhythmic pattern with triplet markings. The fourth system is for the second Guitar, starting with a treble clef and a key signature of one flat, featuring a complex rhythmic pattern with triplet markings. The fifth system is for the Bass, starting with a bass clef and a key signature of one flat, featuring a simple rhythmic pattern with triplet markings.

# MXPX - Chickmagnet

Vocal

♩ = 167,999939

12

17

21

26

30

43

48

51

3

9

2

2

9

3

Detailed description: This image shows a vocal score for the song 'Chickmagnet' by MXPX. The score is written in treble clef with a key signature of one sharp (F#) and a 4/4 time signature. The tempo is marked as ♩ = 167,999939. The score consists of eight staves of music, each starting with a measure number. The first staff begins with a 12-measure rest. The music features a variety of note values, including quarter, eighth, and sixteenth notes, often beamed together. Slurs are used to group notes across measures. There are several instances of triplets, indicated by a '3' below a bracketed group of notes. Some measures contain rests of 9 or 2 measures. The score ends with a 9-measure rest on the final staff.

62

67

71

75

87

92

98

103

107

111



# MXPX - Chickmagnet

## Drums

$\text{♩} = 167,999939$

**3**

8

12

16

20

24

28

31

34

37

**3** **3**

V.S.

Drums

40

44

48

52

56

60

64

68

72

76

3

3

Drums

79

82

85

88

92

96

100

104

109

113

V.S.



Drums

117

3 3

120

123

126

129

132

3 3 4

# MXPX - Chickmagnet

Guitar

♩ = 167,999939

3

9

15

30

34

38

42

46

50

53

6

6

19

77



81



85



89



93



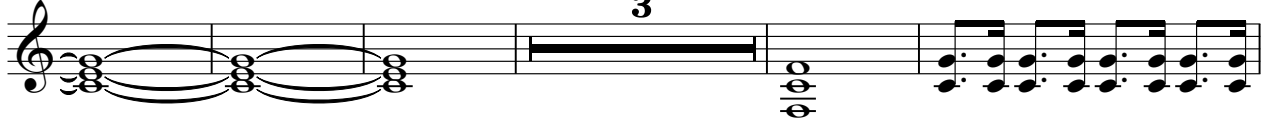
97



101



111



119



123



127



131



134



# MXPX - Chickmagnet

Guitar

♩ = 167,999939

4

13

3

22

30

34

38

42

46

50

6

6

54

3

65

73

79

83

87

91

95

99

104

117

121



125



129



133



# MXPX - Chickmagnet

Bass

♩ = 167,999939



6



11



16



21



26



31



37



41



45



V.S.



49



53



58



63



68



73



78



84



88



92



96



100



105



110



115



120



126



132

