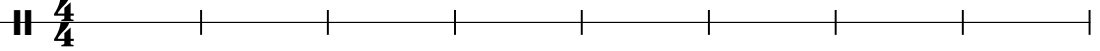


Marilyn Manson - Irresponsible Hate Anthem

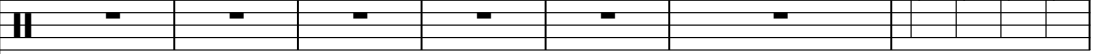
♩ = 108,000107

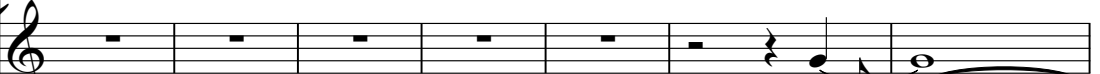
crowd 

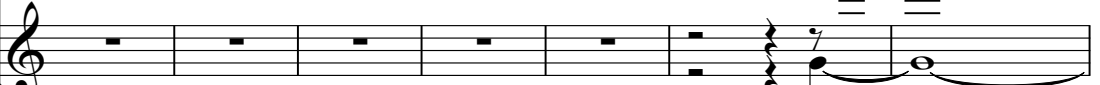


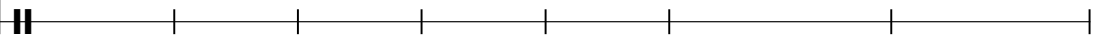
9

♩ = 197,000336

drums 

guitar 1 


harmonics 


crowd 


♩ = 197,000336




16

drums 

guitar 1 

harmonics 

bass 

19

drums

guitar 1

bass



22

drums

guitar 1

harmonics

bass



25

drums

guitar 1

harmonics

bass

27

drums

guitar 1

harmonics

bass

Detailed description: This system covers measures 27 and 28. The drums part features a consistent eighth-note pattern. The guitar 1 part consists of a single note held across both measures. The harmonics part also consists of a single note held across both measures. The bass part plays a steady eighth-note line, with a sharp sign (#) appearing at the start of measure 28.



29

drums

guitar 1

harmonics

bass

Detailed description: This system covers measures 29 and 30. The drums part continues with the eighth-note pattern. The guitar 1 part has a single note held across both measures. The harmonics part features a tremolo effect on a single note. The bass part continues with the eighth-note line, including a sharp sign (#) at the start of measure 30.



31

drums

guitar 1

harmonics

bass

Detailed description: This system covers measures 31 and 32. The drums part continues with the eighth-note pattern. The guitar 1 part has a single note in measure 31, followed by a chord in measure 32. The harmonics part has a single note in measure 31 and is silent in measure 32. The bass part continues with the eighth-note line, including a sharp sign (#) at the start of measure 32.

33

drums

guitar 1

bass

Detailed description: This system contains measures 33 and 34. The drums part features a consistent eighth-note hi-hat pattern. The guitar 1 part consists of a series of chords: a quarter rest, a dotted quarter chord, an eighth rest, a quarter chord, a quarter rest, a dotted quarter chord, an eighth rest, and a quarter chord. The bass part plays a steady eighth-note line, with a sharp sign (#) appearing under the eighth note in measure 34.



35

drums

guitar 1

harmonics

bass

Detailed description: This system contains measures 35 and 36. The drums part continues with the eighth-note hi-hat pattern. The guitar 1 part has the same chord sequence as in the previous system. The harmonics part is mostly silent, with a single note in measure 36. The bass part continues with the eighth-note line, including the sharp sign (#) in measure 36.



37

drums

guitar 1

harmonics

bass

Detailed description: This system contains measures 37 and 38. The drums part continues with the eighth-note hi-hat pattern. The guitar 1 part has the same chord sequence. The harmonics part features a melodic line with a slur over two notes in measure 37 and a slur over a note and a rest in measure 38. The bass part continues with the eighth-note line, including the sharp sign (#) in measure 38.

39 5

drums

guitar 1

harmonics

bass



42

drums

guitar 1

bass



45

drums

guitar 1

bass

6

48

drums

guitar 1

harmonics

bass



50

drums

guitar 1

harmonics

bass



52

drums

guitar 1

harmonics

bass

54

drums

guitar 1

harmonics

bass

Detailed description: This system covers measures 54 and 55. The drums part features a consistent pattern of eighth notes with 'x' marks above them, indicating a specific drum sound. The guitar 1 part consists of a single sustained note with a long horizontal line above it. The harmonics part also features a single sustained note with a long horizontal line above it. The bass part is a simple eighth-note line in a key with one sharp (F#).



56

drums

guitar 1

harmonics

bass

Detailed description: This system covers measures 56 and 57. The drums part continues with the same eighth-note pattern. The guitar 1 part has a more active line with chords and rests. The harmonics part has a single sustained note with a long horizontal line above it. The bass part continues with the eighth-note line.



58

drums

guitar 1

harmonics

bass

Detailed description: This system covers measures 58 and 59. The drums part continues with the eighth-note pattern. The guitar 1 part has a more active line with chords and rests. The harmonics part has a single sustained note with a long horizontal line above it. The bass part continues with the eighth-note line.

60

drums

guitar 1

harmonics

bass



62

drums

guitar 1

harmonics

bass



64

drums

guitar 1

bass

67

drums

guitar 1

bass

Detailed description: This system contains measures 67, 68, and 69. The drums part features a consistent eighth-note pattern. Guitar 1 plays a series of chords, with a key signature change to one sharp (F#) occurring at the start of measure 68. The bass line provides a steady eighth-note accompaniment.



70

drums

guitar 1

bass

Detailed description: This system contains measures 70, 71, 72, and 73. The drums part continues with eighth notes, ending with a cymbal crash in measure 73. Guitar 1 features a complex chordal texture with some notes beamed together. The bass line continues with eighth notes.



74

drums

guitar 1

guitar 2

bass

Detailed description: This system contains measures 74, 75, 76, and 77. The drums part has a more varied pattern with some rests. Guitar 1 plays chords, while guitar 2 remains silent. The bass line continues with eighth notes.

79

drums

guitar 1

guitar 2

bass

Detailed description: This system covers measures 79 to 83. The drums play a consistent pattern of quarter notes on the snare and bass drum. Guitar 1 plays a complex chordal texture with many accidentals. Guitar 2 is mostly silent, with some notes appearing in the final measure. The bass line consists of a steady eighth-note pattern.



84

drums

guitar 1

bass

Detailed description: This system covers measures 84 to 87. The drums continue with the same pattern. Guitar 1 plays a series of chords, some with accidentals. The bass line continues with eighth notes.



88

drums

guitar 1

harmonics

guitar 2

bass

Detailed description: This system covers measures 88 to 91. The drums play a pattern of eighth notes with 'x' marks above them, indicating a specific drum sound. Guitar 1 plays sustained chords with long horizontal lines. The harmonics part shows a melodic line with accidentals. Guitar 2 plays a simple melodic line. The bass line continues with eighth notes.

90

drums

guitar 1

harmonics

guitar 2

bass

Detailed description: This musical score covers measures 90 and 91. The drums part features a consistent pattern of eighth notes on the snare and bass drums. Guitar 1 plays a sustained chord with a long note in the first measure and a shorter note in the second. Harmonics are played in both measures, with a flat sign (b) appearing in the second measure. Guitar 2 plays a sequence of notes, including a flat sign (b) in the second measure. The bass line consists of a steady eighth-note pattern.



92

drums

guitar 1

harmonics

guitar 2

bass

Detailed description: This musical score covers measures 92 and 93. The drums part continues with the same eighth-note pattern. Guitar 1 plays a sustained chord with a long note in the first measure and a shorter note in the second. Harmonics are played in both measures, with a sharp sign (#) appearing in the second measure. Guitar 2 plays a sequence of notes, including a sharp sign (#) in the second measure. The bass line continues with the eighth-note pattern.

94

drums

guitar 1

harmonics

guitar 2

bass



96

drums

guitar 1

bass



98

drums

bass

100

drums

guitar 1

bass

orchestra hit



102

drums

guitar 1

bass

orchestra hit



104

drums

guitar 1

bass

106

drums

guitar 1

bass

Detailed description: This system covers measures 106 and 107. The drums part features a consistent eighth-note hi-hat pattern. The guitar 1 part consists of a series of chords, with some measures containing a slash indicating a specific guitar technique. The bass part plays a steady eighth-note line.



108

drums

guitar 1

bass

Detailed description: This system covers measures 108 and 109. The drums part features a consistent eighth-note hi-hat pattern. The guitar 1 part consists of a series of chords, with some measures containing a slash indicating a specific guitar technique. The bass part plays a steady eighth-note line.



110

drums

guitar 1

bass

Detailed description: This system covers measures 110 and 111. The drums part features a consistent eighth-note hi-hat pattern. The guitar 1 part consists of a series of chords, with some measures containing a slash indicating a specific guitar technique. The bass part plays a steady eighth-note line.



112

drums

guitar 1

bass

Detailed description: This system covers measures 112 and 113. The drums part features a consistent eighth-note hi-hat pattern. The guitar 1 part consists of a series of chords, with some measures containing a slash indicating a specific guitar technique. The bass part plays a steady eighth-note line.

115

drums

guitar 1

bass

Detailed description: This system contains measures 115, 116, and 117. The drums part features a consistent eighth-note pattern. Guitar 1 plays a series of chords, with a key signature change to one sharp (F#) occurring in measure 116. The bass line provides a steady eighth-note accompaniment.



118

drums

guitar 1

bass

Detailed description: This system contains measures 118, 119, 120, and 121. The drums part continues with eighth notes, ending with a cymbal crash in measure 121. Guitar 1 plays chords, with a key signature change to two sharps (F# and C#) in measure 120. The bass line continues with eighth notes.



122

drums

guitar 1

guitar 2

bass

Detailed description: This system contains measures 122, 123, 124, and 125. The drums part features a pattern of eighth notes with occasional rests. Guitar 1 plays chords, with a key signature change to one sharp (F#) in measure 123. Guitar 2 is silent throughout this system. The bass line continues with eighth notes.

127

drums

guitar 1

guitar 2

bass

Detailed description: This system covers measures 127 to 131. The drums play a consistent pattern of quarter notes on the snare and bass drum. Guitar 1 plays a complex chordal texture with many accidentals. Guitar 2 is mostly silent, with some notes appearing in the final measure. The bass line consists of a steady eighth-note pattern.



132

drums

guitar 1

bass

Detailed description: This system covers measures 132 to 135. The drums continue with the same pattern. Guitar 1 plays a series of chords, some with accidentals. The bass line continues with eighth notes.



136

drums

guitar 1

harmonics

guitar 2

bass

Detailed description: This system covers measures 136 to 140. The drums play a pattern of eighth notes with 'x' marks above them, indicating a specific drum sound. Guitar 1 plays a sustained chord with a long note. The harmonics part shows a melodic line with accidentals. Guitar 2 plays a simple melodic line. The bass line continues with eighth notes.

138

drums

guitar 1

harmonics

guitar 2

bass



140

drums

guitar 1

harmonics

guitar 2

bass

142

drums

guitar 1

harmonics

guitar 2

bass

Detailed description: This musical score covers measures 142 and 143. The drums part features a consistent pattern of eighth notes with 'x' marks above them, indicating a specific drum sound. The guitar 1 part consists of sustained chords with a long slur over the two measures. The harmonics part shows a sequence of notes with a slur, including a flat symbol (b) in the second measure. The guitar 2 part has a series of notes with a slur, also including a flat symbol (b) in the second measure. The bass part plays a steady eighth-note line.



144

drums

guitar 1

harmonics

guitar 2

bass

Detailed description: This musical score covers measures 144 and 145. The drums part continues with the same eighth-note pattern. The guitar 1 part has a slur over the two measures. The harmonics part shows a sequence of notes with a slur, including a sharp symbol (#) in the second measure. The guitar 2 part has a series of notes with a slur, also including a sharp symbol (#) in the second measure. The bass part plays a steady eighth-note line.

146

drums

harmonics

guitar 2

bass

Detailed description: This system covers measures 146 and 147. The drums part features a consistent eighth-note hi-hat pattern. The harmonics, guitar 2, and bass parts are in a key with one sharp (F#). The harmonics and guitar 2 parts are identical, featuring a sequence of notes: F#4 (quarter), G4 (quarter), A4 (quarter), B4 (quarter), C5 (quarter), B4 (quarter), A4 (quarter), G4 (quarter), F#4 (quarter), E4 (quarter), D4 (quarter), C4 (quarter). The bass part consists of a steady eighth-note line: F#2, G2, A2, B2, C3, D3, E3, F#3, G3, A3, B3, C4, D4, E4, F#4, G4, A4, B4, C5, B4, A4, G4, F#4, E4, D4, C4.



148

drums

harmonics

guitar 2

bass

Detailed description: This system covers measures 148 and 149. The drums part continues with the eighth-note hi-hat pattern. The harmonics and guitar 2 parts are in a key with one sharp (F#). The harmonics and guitar 2 parts are identical, featuring a sequence of notes: F#4 (quarter), G4 (quarter), A4 (quarter), B4 (quarter), C5 (quarter), B4 (quarter), A4 (quarter), G4 (quarter), F#4 (quarter), E4 (quarter), D4 (quarter), C4 (quarter), D4 (quarter), E4 (quarter), F#4 (quarter), G4 (quarter), A4 (quarter), B4 (quarter), C5 (quarter), B4 (quarter), A4 (quarter), G4 (quarter), F#4 (quarter), E4 (quarter), D4 (quarter), C4 (quarter). The bass part consists of a steady eighth-note line: F#2, G2, A2, B2, C3, D3, E3, F#3, G3, A3, B3, C4, D4, E4, F#4, G4, A4, B4, C5, B4, A4, G4, F#4, E4, D4, C4.



150

drums

harmonics

guitar 2

bass

Detailed description: This system covers measures 150 and 151. The drums part continues with the eighth-note hi-hat pattern. The harmonics and guitar 2 parts are in a key with one sharp (F#). The harmonics and guitar 2 parts are identical, featuring a sequence of notes: F#4 (quarter), G4 (quarter), A4 (quarter), B4 (quarter), C5 (quarter), B4 (quarter), A4 (quarter), G4 (quarter), F#4 (quarter), E4 (quarter), D4 (quarter), C4 (quarter), D4 (quarter), E4 (quarter), F#4 (quarter), G4 (quarter), A4 (quarter), B4 (quarter), C5 (quarter), B4 (quarter), A4 (quarter), G4 (quarter), F#4 (quarter), E4 (quarter), D4 (quarter), C4 (quarter). The bass part consists of a steady eighth-note line: F#2, G2, A2, B2, C3, D3, E3, F#3, G3, A3, B3, C4, D4, E4, F#4, G4, A4, B4, C5, B4, A4, G4, F#4, E4, D4, C4.

152

drums

harmonics

guitar 2

bass

Detailed description: This system covers measures 152 and 153. The drums part features a consistent eighth-note pattern. The harmonics, guitar 2, and bass parts are in a key with one sharp (F#) and play a melodic line with quarter notes and some ties.



154

drums

harmonics

guitar 2

bass

Detailed description: This system covers measures 154 and 155. The drums part continues with the eighth-note pattern. The harmonics and guitar 2 parts show some melodic variation, including a flat (b) in measure 155. The bass part continues with a steady eighth-note line.



156

drums

guitar 1

harmonics

guitar 2

bass

Detailed description: This system covers measures 156, 157, and 158. The drums part changes to a pattern of eighth notes with accents. The guitar 1 part plays a complex, rhythmic accompaniment with many beamed notes. The harmonics part is mostly silent, indicated by a horizontal line. The guitar 2 and bass parts continue with their respective melodic and rhythmic lines.

159

drums

guitar 1

guitar 2

bass

Detailed description: This system contains measures 159, 160, and 161. The drums play a consistent pattern of eighth notes. Guitar 1 plays a complex, fast-moving line with many beamed notes. Guitar 2 plays a similar but slightly different line. The bass line consists of eighth notes, with a key signature change to one sharp (F#) at the start of measure 160.



162

drums

guitar 1

guitar 2

bass

Detailed description: This system contains measures 162, 163, and 164. The drums continue with the eighth-note pattern. Guitar 1 and 2 play complex, fast-moving lines. The bass line continues with eighth notes. A key signature change to two sharps (F# and C#) occurs at the start of measure 163.



165

drums

guitar 1

bass

Detailed description: This system contains measures 165, 166, and 167. The drums continue with the eighth-note pattern. Guitar 1 plays a complex line with some sustained notes. The bass line continues with eighth notes. A key signature change to one sharp (F#) occurs at the start of measure 166.

168

drums

guitar 1

bass



171

drums

guitar 1

bass



174

drums

guitar 1

bass



177

drums

guitar 1

bass

180

drums

guitar 1

harmonics

bass

fret noise



183

guitar 1

harmonics

bass

fret noise

Marilyn Manson - Irresponsible Hate Anthem

drums

♩ = 108,000107 ♩ = 197,000336

13

18

22

25

27

29

31

33

35

37

V.S.

2

drums

39

Drum notation: Measure 39 has a cymbal crash (marked with an asterisk) followed by eighth notes. Measures 40-41 have eighth notes.

Guitar notation: Measure 39 has a quarter note. Measures 40-41 have eighth notes.

42

Drum notation: Measures 42-45 have eighth notes.

Guitar notation: Measures 42-45 have eighth notes.

46

Drum notation: Measure 46 has eighth notes. Measure 47 has eighth notes. Measure 48 has a cymbal crash (marked with an asterisk) and eighth notes.

Guitar notation: Measure 46 has eighth notes. Measure 47 has eighth notes. Measure 48 has a quarter note.

49

Drum notation: Measures 49-50 have eighth notes.

Guitar notation: Measures 49-50 have quarter notes.

51

Drum notation: Measures 51-52 have eighth notes.

Guitar notation: Measures 51-52 have quarter notes.

53

Drum notation: Measures 53-54 have eighth notes.

Guitar notation: Measures 53-54 have quarter notes.

55

Drum notation: Measures 55-56 have eighth notes.

Guitar notation: Measures 55-56 have quarter notes.

57

Drum notation: Measures 57-58 have eighth notes.

Guitar notation: Measures 57-58 have quarter notes.

59

Drum notation: Measures 59-60 have eighth notes.

Guitar notation: Measures 59-60 have quarter notes.

61

Drum notation: Measures 61-62 have eighth notes.

Guitar notation: Measures 61-62 have quarter notes.

63

66

70

75

81

87

90

92

94

96

Drum notation for measures 98 through 121. The notation is presented in two staves per system: a top staff for the snare drum and a bottom staff for the bass drum. The top staff uses 'x' marks to indicate hits, while the bottom staff uses note heads to indicate hits. The notation is organized into systems, with measure numbers 98, 100, 102, 104, 106, 108, 110, 113, 117, and 121 marking the beginning of each system. The rhythm consists of a steady pattern of eighth notes, with some variations in the later measures, including a triplet in measure 110 and a change in the bass drum pattern in measure 117.

127

Musical notation for measure 127, featuring a drum staff with a series of eighth notes and a bass line with quarter notes.

133

Musical notation for measure 133, featuring a drum staff with a series of eighth notes and a bass line with quarter notes. A star symbol is present above the drum staff.

137

Musical notation for measure 137, featuring a drum staff with a series of eighth notes and a bass line with quarter notes.

139

Musical notation for measure 139, featuring a drum staff with a series of eighth notes and a bass line with quarter notes.

141

Musical notation for measure 141, featuring a drum staff with a series of eighth notes and a bass line with quarter notes.

143

Musical notation for measure 143, featuring a drum staff with a series of eighth notes and a bass line with quarter notes.

145

Musical notation for measure 145, featuring a drum staff with a series of eighth notes and a bass line with quarter notes.

147

Musical notation for measure 147, featuring a drum staff with a series of eighth notes and a bass line with quarter notes.

149

Musical notation for measure 149, featuring a drum staff with a series of eighth notes and a bass line with quarter notes.

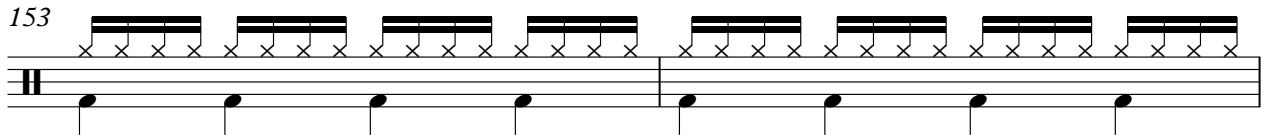
151

Musical notation for measure 151, featuring a drum staff with a series of eighth notes and a bass line with quarter notes.

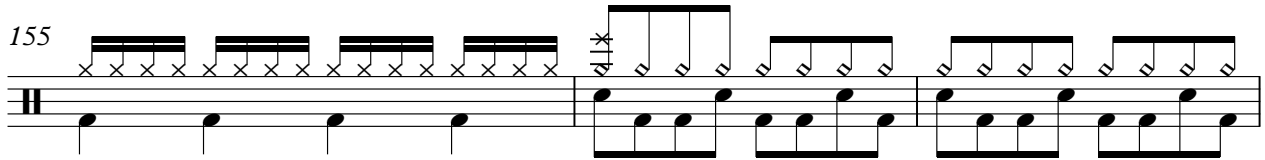
V.S.

drums

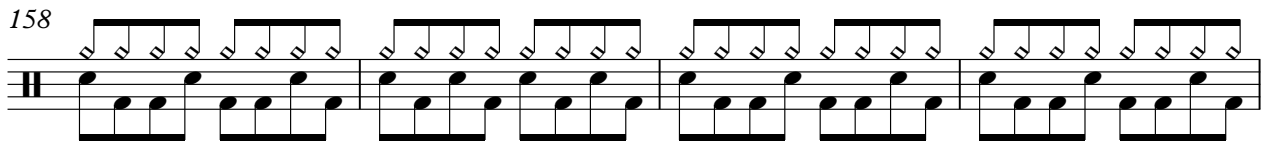
153



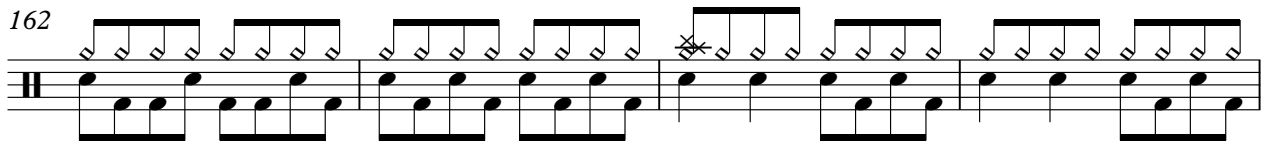
155



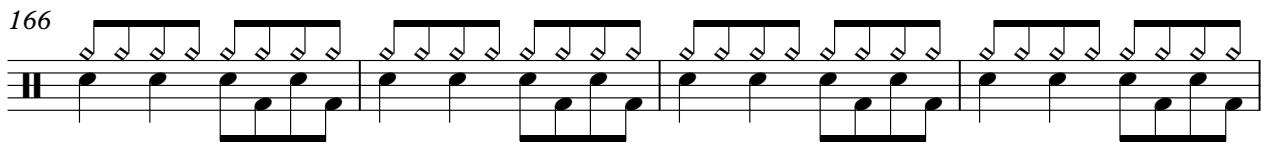
158




162



166



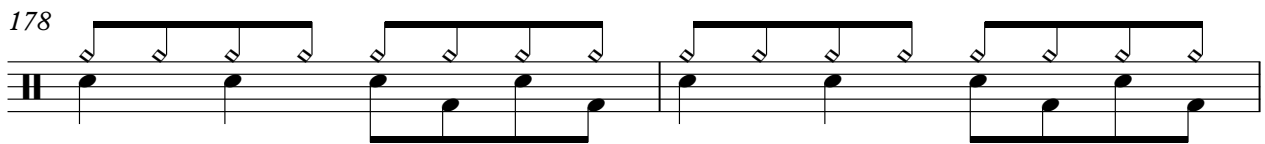
170



174



178



180



Marilyn Manson - Irresponsible Hate Anthem

guitar 1

♩ = 108,000107 ♩ = 197,000336

13

18

22

28

35

40

44

48

56

61

V.S.

65

69

73

79

85

94

104

109

113

117

121

127

133

142

10

157

161

165

170

176

180

♪ = 108,000107 ♩ = 197,000336

13 **7**

24

32 **4** **8**

48

55

64 **24**

92 **40**

136



142



148



154



23

180



Marilyn Manson - Irresponsible Hate Anthem

guitar 2

♩ = 108,000107 ♩ = 197,000336

13 61 7

83 4

92 27

123 7 4

137

143

149

155

160

163 21

Marilyn Manson - Irresponsible Hate Anthem

bass

♩ = 108,000107 ♩ = 197,000336

13 **2**

18

22

26

30

34

38

42

46

50

V.S.

54



58



62



66



70



75



82



88



92



96



100



104



108



112



116



120



126



133



138



142



V.S.

146



150



154



158



162



167



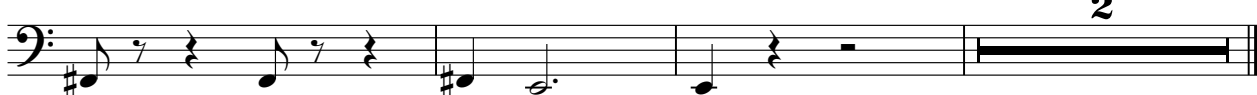
173



178



181



orchestra hit

Marilyn Manson - Irresponsible Hate Anthem

♪ = 108,000107 ♯ = 197,000336

13 **86**

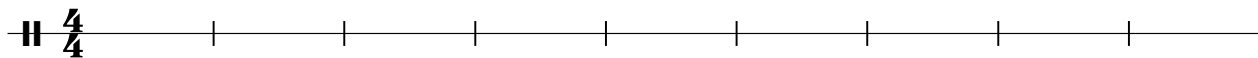
101

83

crowd

Marilyn Manson - Irresponsible Hate Anthem

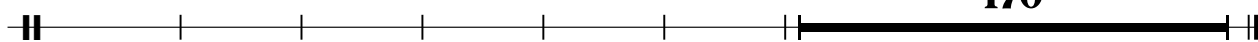
♩ = 108,000107



10

♩ = 197,000336


170



fret noise

Marilyn Manson - Irresponsible Hate Anthem

♩ = 108,000107



♩ = 197,000336

