

Nine Inch Nails - Ruiner

0.0"
1.1,00
Ruíner - Nine Inch Nails

$\text{♩} = 116,000084$

Percussion

Piano

Synth Voice



3

Percussion

Piano

Synth Voice



5

Percussion

Piano

Synth Voice



7

Percussion

Piano

Synth Voice

9

Percussion

Synth Voice

Vocals

Pad 3 (Polysynth)



11

Percussion

Vocals

Pad 3 (Polysynth)



13

Percussion

Vocals

Pad 3 (Polysynth)



15

Percussion

Vocals

Pad 3 (Polysynth)

17 3

Percussion

Synth Voice

Vocals

Pad 3 (Polysynth)



19

Percussion

Synth Voice

Vocals

Pad 3 (Polysynth)



21

Percussion

Synth Voice

Vocals

Pad 3 (Polysynth)

23

Percussion

Synth Voice

Vocals

Pad 3 (Polysynth)



25

Trumpet

Percussion

Bass

Brass Section

Vocals



26

Trumpet

Percussion

Bass

Brass Section

27

Trumpet

Percussion

Bass

Brass Section



28

Trumpet

Percussion

Bass

Brass Section



29

Trumpet

Percussion

Bass

Synth Voice

Brass Section

30

Trumpet

Percussion

Bass

Synth Voice

Brass Section



31

Trumpet

Percussion

Bass

Synth Voice

Brass Section

32

Trumpet

Percussion

Bass

Synth Voice

Brass Section



33

Trumpet

Percussion

Bass

Synth Voice

Brass Section

34

Trumpet

Percussion

Bass

Synth Voice

Brass Section

Vocals

Detailed description: This block contains the musical score for measures 34 and 35. The score is arranged in six staves. The top staff is for Trumpet, the second for Percussion, the third for Bass, the fourth for Synth Voice, the fifth for Brass Section, and the sixth for Vocals. Measure 34 is marked with a '34' above the staff. The Bass staff features a continuous sixteenth-note pattern with a '6' above it, indicating a sixteenth-note figure. The Synth Voice staff has a melodic line starting in measure 34 and continuing into measure 35. The Vocals staff shows a vocal line with a long note in measure 34 and a shorter note in measure 35. The Trumpet and Brass Section staves have a single note in measure 34. The Percussion staff has a rhythmic pattern of two notes in measure 34 and two in measure 35.



35

Trumpet

Percussion

Bass

Synth Voice

Brass Section

Vocals

Detailed description: This block contains the musical score for measures 35 and 36. The score is arranged in six staves. The top staff is for Trumpet, the second for Percussion, the third for Bass, the fourth for Synth Voice, the fifth for Brass Section, and the sixth for Vocals. Measure 35 is marked with a '35' above the staff. The Bass staff continues the sixteenth-note pattern with a '6' above it. The Synth Voice staff has a melodic line starting in measure 35 and continuing into measure 36. The Vocals staff has a long note in measure 35 and a shorter note in measure 36. The Trumpet and Brass Section staves have a long note in measure 35. The Percussion staff has a rhythmic pattern of two notes in measure 35 and two in measure 36.

36

Trumpet

Percussion

Bass

Synth Voice

Brass Section

Vocals



37

Trumpet

Percussion

Bass

Synth Voice

Brass Section

Vocals

38

Trumpet

Percussion

Bass

Synth Voice

Brass Section

Vocals



39

Trumpet

Percussion

Bass

Synth Voice

Brass Section

Vocals

40

Trumpet

Percussion

Bass

Synth Voice

Brass Section

Vocals

41

Percussion

Bass

Synth Voice

Vocals

Pad 3 (Polysynth)

43

Percussion

Synth Voice

Pad 3 (Polysynth)

45

Percussion

Synth Voice

Pad 3 (Polysynth)



47

Percussion

Synth Voice

Pad 3 (Polysynth)



49

Percussion

Synth Voice

Vocals

Pad 3 (Polysynth)



51

Percussion

Vocals

Pad 3 (Polysynth)

53

Percussion

Vocals

Pad 3 (Polysynth)



55

Percussion

Vocals

Pad 3 (Polysynth)



57

Percussion

Synth Voice

Vocals

Pad 3 (Polysynth)

59

Percussion

Synth Voice

Vocals

Pad 3 (Polysynth)



61

Percussion

Synth Voice

Vocals

Pad 3 (Polysynth)



63

Percussion

Synth Voice

Vocals

Pad 3 (Polysynth)

65

Trumpet

Percussion

Bass

Brass Section

Vocals

Detailed description: This musical score block covers measures 65 to 68. It features five staves: Trumpet, Percussion, Bass, Brass Section, and Vocals. The Trumpet and Brass Section parts are identical, playing a series of chords: a G2-G3 octave chord, a G2-G3-F2 chord, a G2-G3-F2 chord, and a G2-G3-F2 chord with a sharp sign above the G. The Percussion part consists of a steady eighth-note pattern. The Bass part is a continuous eighth-note line. The Vocals part has a melodic line starting in measure 66, with a sharp sign above the final note in measure 68.



69

Trumpet

Percussion

Bass

Synth Voice

Brass Section

Vocals

Detailed description: This musical score block covers measures 69 to 72. It features six staves: Trumpet, Percussion, Bass, Synth Voice, Brass Section, and Vocals. The Trumpet and Brass Section parts are identical, playing a series of chords: a G2-G3 octave chord, a G2-G3-F2 chord, a G2-G3-F2 chord, and a G2-G3-F2 chord with a sharp sign above the G. The Percussion part is a steady eighth-note pattern. The Bass part is a continuous eighth-note line. The Synth Voice part has a melodic line starting in measure 69, with a sharp sign above the final note in measure 72. The Vocals part has a melodic line starting in measure 70, with a sharp sign above the final note in measure 72.

73

Trumpet

Percussion

Bass

Synth Voice

Brass Section

Vocals

Detailed description: This musical score block covers measures 73 to 76. It features six staves: Trumpet, Percussion, Bass, Synth Voice, Brass Section, and Vocals. The Trumpet and Brass Section parts are identical, featuring a melodic line with a sharp sign on the final note of the first phrase. The Percussion part consists of a steady eighth-note pattern. The Bass part is a continuous eighth-note line. The Synth Voice part has a melodic line with rests. The Vocals part has a melodic line with rests.



77

Trumpet

Percussion

Bass

Synth Voice

Brass Section

Vocals

Detailed description: This musical score block covers measures 77 to 80. It features six staves: Trumpet, Percussion, Bass, Synth Voice, Brass Section, and Vocals. The Trumpet and Brass Section parts are identical, featuring a melodic line with a sharp sign on the final note of the first phrase. The Percussion part consists of a steady eighth-note pattern. The Bass part is a continuous eighth-note line. The Synth Voice part has a melodic line with rests. The Vocals part has a melodic line with rests.

81

Bass

Synth Voice

Vocals



87

Overdriven Guitar

Bass



91

Overdriven Guitar

Bass



95

Percussion

Overdriven Guitar

Bass

99

Percussion

Overdriven Guitar

Bass



102

Percussion

Overdriven Guitar

Bass



105

Percussion

Overdriven Guitar

Bass



109

Percussion

Overdriven Guitar

Bass

112

Percussion

Overdriven Guitar

Distortion Guitar

Bass



115

Percussion

Distortion Guitar

Synth Voice



119

Percussion

Distortion Guitar

Synth Voice

Vocals

123

Trumpet

Percussion

Distortion Guitar

Bass

Synth Voice

Brass Section

Vocals

Detailed description: This block contains the musical score for measures 123 through 126. The score is arranged in a multi-staff format. The top staff is for Trumpet, followed by Percussion, Distortion Guitar, Bass, Synth Voice, Brass Section, and Vocals. The Distortion Guitar part features a complex, fast-paced riff with many beamed notes. The Synth Voice part has a melodic line with some rests. The Vocals part has a rhythmic pattern of eighth notes. The Brass Section and Trumpet parts have long, sustained notes with some accidentals.



127

Trumpet

Percussion

Distortion Guitar

Bass

Synth Voice

Brass Section

Vocals

Detailed description: This block contains the musical score for measures 127 through 130. The score continues from the previous block. The instruments and parts are the same: Trumpet, Percussion, Distortion Guitar, Bass, Synth Voice, Brass Section, and Vocals. The Distortion Guitar part continues with its fast, complex riff. The Synth Voice part has a similar melodic line. The Vocals part continues with its rhythmic pattern. The Brass Section and Trumpet parts have long, sustained notes with some accidentals.

131

Trumpet

Percussion

Distortion Guitar

Bass

Synth Voice

Brass Section

Vocals



135

Trumpet

Percussion

Distortion Guitar

Bass

Synth Voice

Brass Section

Vocals

139

Trumpet

Percussion

Distortion Guitar

Bass

Synth Voice

Brass Section

Vocals

Detailed description: This block contains the musical notation for measures 139, 140, and 141. The score is arranged in a system with seven staves. The Trumpet and Brass Section staves show a melodic line with a sharp sign (F#) in the second measure. The Percussion staff features a consistent rhythmic pattern of eighth notes. The Distortion Guitar staff has a dense, multi-voice chordal texture. The Bass staff provides a steady eighth-note accompaniment. The Synth Voice staff has a melodic line with rests. The Vocals staff has a melodic line with rests.



142

Trumpet

Percussion

Distortion Guitar

Bass

Synth Voice

Brass Section

Vocals

Detailed description: This block contains the musical notation for measures 142, 143, and 144. The score is arranged in a system with seven staves. The Trumpet and Brass Section staves show a melodic line with a sharp sign (F#) in the second measure. The Percussion staff features a consistent rhythmic pattern of eighth notes. The Distortion Guitar staff has a dense, multi-voice chordal texture. The Bass staff provides a steady eighth-note accompaniment. The Synth Voice staff has a melodic line with rests. The Vocals staff has a melodic line with rests.

Trumpet

Nine Inch Nails - Ruiner

♩ = 116,000084

24

31

39

24

69

77

44

126

134

140

Nine Inch Nails - Ruiner

Percussion

♩ = 116,00084

3

5

7

9

11

13

15

17

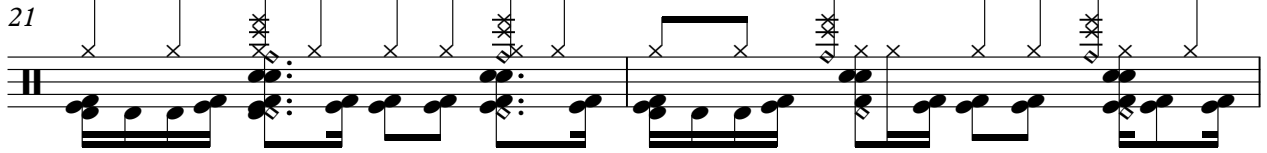
19

V.S.

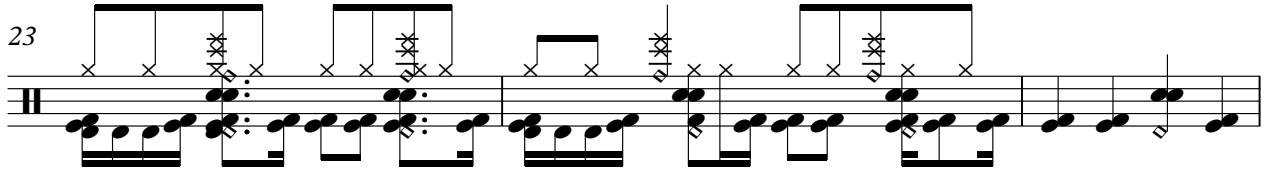
2

Percussion

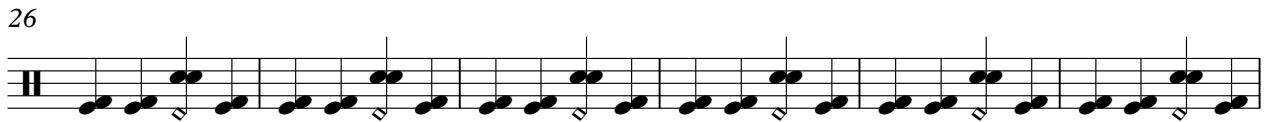
21




23



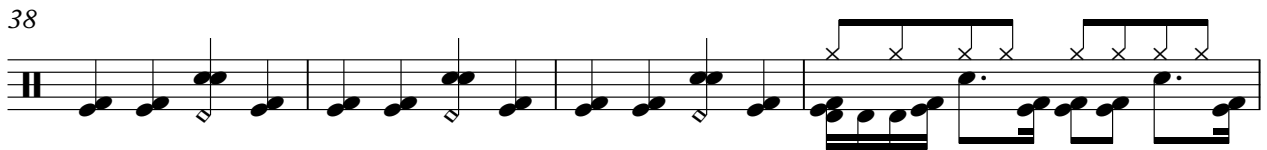
26



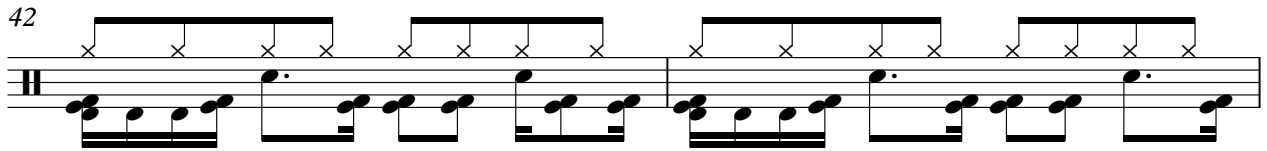
32



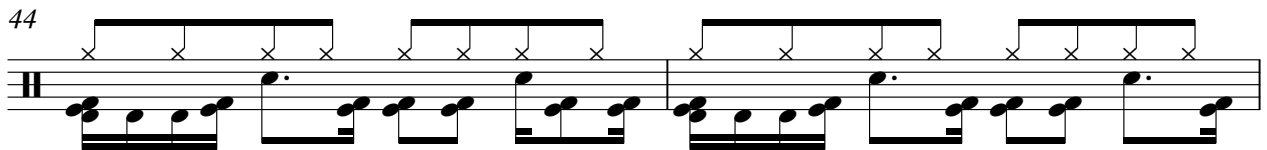
38



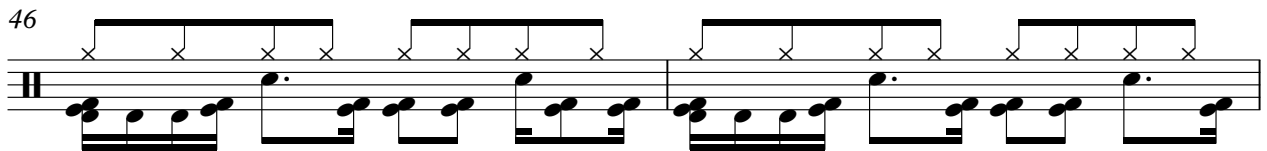
42



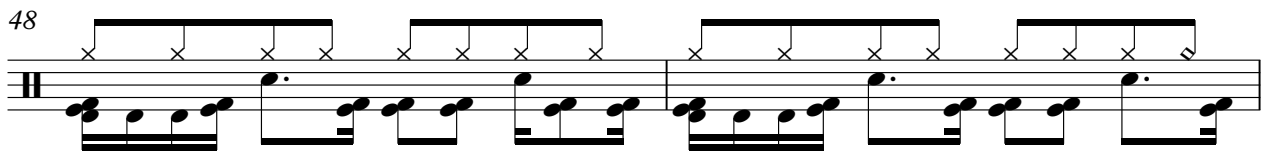
44



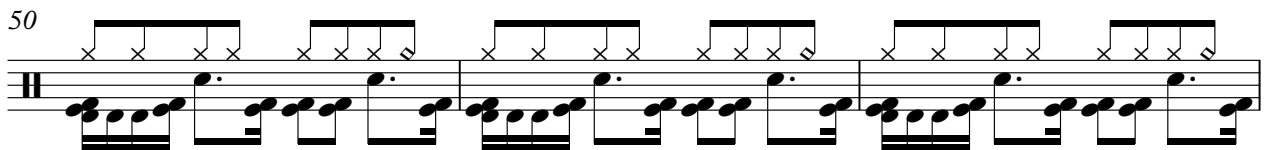
46



48



50



53

Measure 53: Two staves. The top staff shows a series of six eighth notes with 'x' marks above them, indicating a specific percussive sound. The bottom staff shows a rhythmic accompaniment of eighth notes.

56

Measure 56: Two staves. Similar to measure 53, but with some notes in the top staff marked with double asterisks (**), indicating a different percussive effect.

58

Measure 58: Two staves. The top staff features a mix of eighth notes with 'x' and double asterisk (**) marks.

60

Measure 60: Two staves. Similar to measure 58, with 'x' and double asterisk (**) marks in the top staff.

62

Measure 62: Two staves. Similar to measure 60, with 'x' and double asterisk (**) marks in the top staff.

64

Measure 64: Two staves. Similar to measure 62, with 'x' and double asterisk (**) marks in the top staff.

68

Measure 68: Two staves. The top staff is empty, and the bottom staff continues the rhythmic accompaniment.

74

Measure 74: Two staves. The top staff is empty, and the bottom staff continues the rhythmic accompaniment.

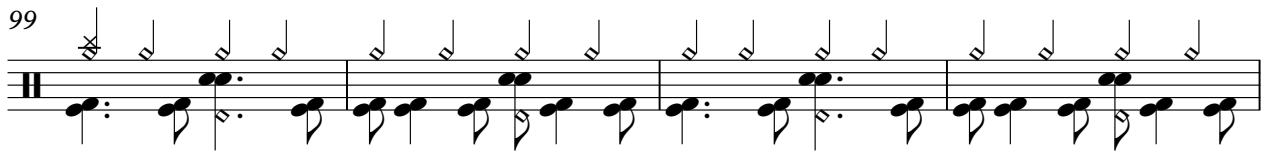
78

Measure 78: Two staves. The top staff is empty, and the bottom staff continues the rhythmic accompaniment. A thick black bar is present at the end of the measure.

95



99



103



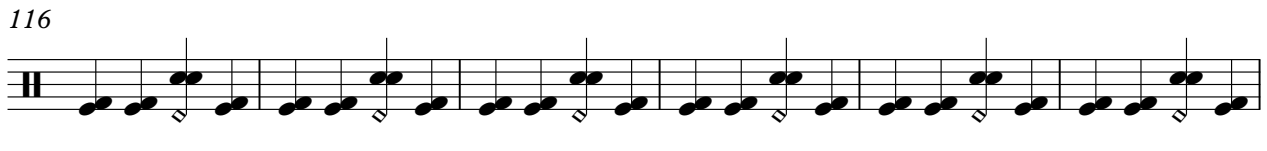
107



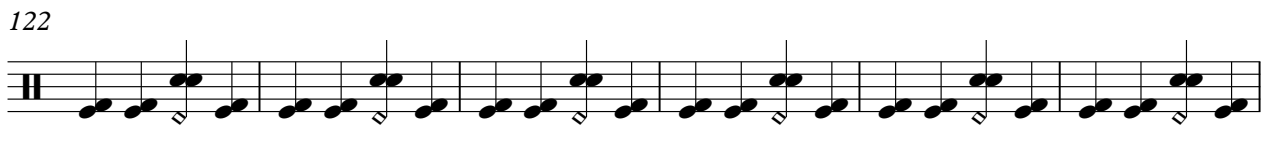
111



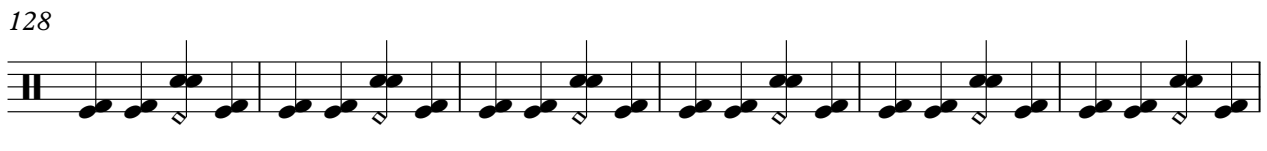
116



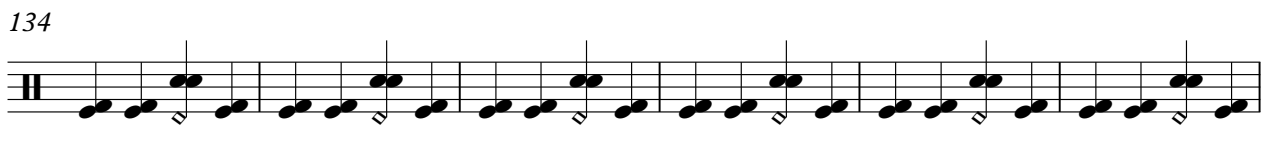
122



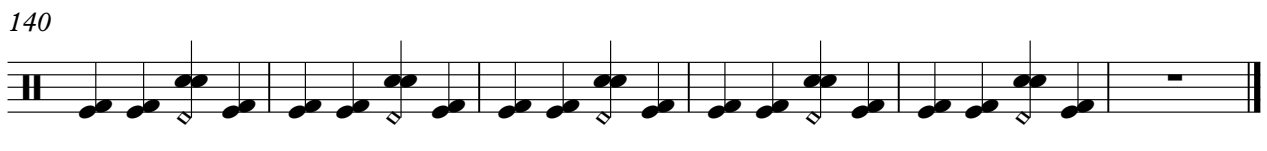
128



134



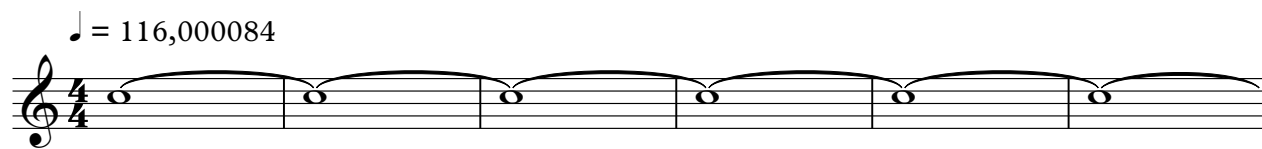
140



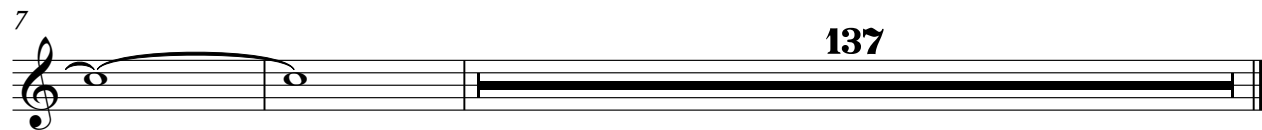
Piano

Nine Inch Nails - Ruiner

♩ = 116,000084



7



Overdriven Guitar

Nine Inch Nails - Ruiner

♩ = 116,000084

87

91

95

100

104

109

112

33

Distortion Guitar

Nine Inch Nails - Ruiner

♩ = 116,000084

112

115

119

123

127

131

135

139

142

Nine Inch Nails - Ruiner

Bass

♩ = 116,000084

24



26



27



28



29



30



31



32



33



34



V.S.

2

Bass

35

Musical staff for measure 35, featuring a bass clef and a sequence of eighth notes. A thick black bar is drawn over the first four notes, with the number '6' centered above it.

36

Musical staff for measure 36, featuring a bass clef and a sequence of eighth notes. A thick black bar is drawn over the first four notes, with the number '6' centered above it.

37

Musical staff for measure 37, featuring a bass clef and a sequence of eighth notes. A thick black bar is drawn over the first four notes, with the number '6' centered above it.

38

Musical staff for measure 38, featuring a bass clef and a sequence of eighth notes. A thick black bar is drawn over the first four notes, with the number '6' centered above it.

39

Musical staff for measure 39, featuring a bass clef and a sequence of eighth notes. A thick black bar is drawn over the first four notes, with the number '6' centered above it.

40

Musical staff for measure 40, featuring a bass clef and a sequence of eighth notes. A thick black bar is drawn over the first four notes, with the number '6' centered above it. The staff concludes with a double bar line, a fermata, and a repeat sign.

42

Musical staff for measure 42, featuring a bass clef. The first measure is a whole rest, with the number '23' centered above it. The rest of the staff contains a sequence of eighth notes.

68

Musical staff for measure 68, featuring a bass clef and a sequence of eighth notes.

72

Musical staff for measure 72, featuring a bass clef and a sequence of eighth notes.

76

Musical staff for measure 76, featuring a bass clef and a sequence of eighth notes.

125



129



133



137



141



143



Nine Inch Nails - Ruiner

Synth Voice

♩ = 116,000084

5

9

7

20

24

4

32

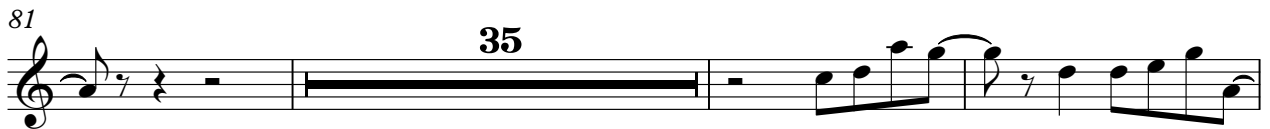
36

40

44

47

7



135



139



142



Brass Section

Nine Inch Nails - Ruiner

♩ = 116,000084

24

31

39 24

69

77 44

126

134

140

Nine Inch Nails - Ruiner

Vocals

♩ = 116,000084

8

12

17

20

23

26

8

38

7

49



53



57



60



63



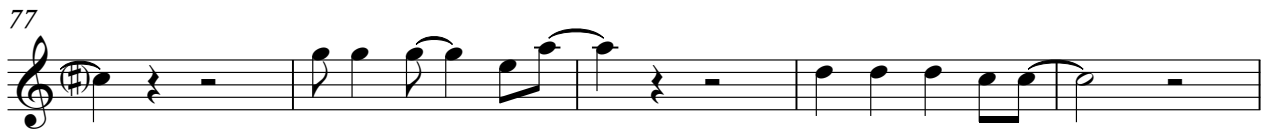
67



72



77



82

39



124



Pad 3 (Polysynth)

Nine Inch Nails - Ruiner

♩ = 116,000084

8

10

12

14

16

18

20

22

24

16

Pad 3 (Polysynth)

41

43

45

47

49

51

53

55

57

59

