

Ringo Starr - It Don't Come Easy

♩ = 130,000137

DRUMS

SEQUENCE - JIM HUFF

RINGO STAR

GUITAR

GUITAR

BASS

Detailed description: This system contains the first four measures of the song. The tempo is marked as ♩ = 130,000137. The time signature is 4/4. The drums play a steady pattern of eighth notes. The sequence (Jim Huff) plays a simple bass line. Ringo Starr's vocal line starts in the second measure with a dotted quarter note, followed by eighth notes. The guitar parts provide harmonic support, with the top guitar playing a melody similar to the vocal line and the bottom guitar playing chords. The bass line is a simple eighth-note pattern.



5

DRUMS

SEQUENCE - JIM HUFF

RINGO STAR

GUITAR

GUITAR

BASS

Detailed description: This system contains measures 5 through 8. The drums continue their pattern. The sequence (Jim Huff) plays a simple bass line. Ringo Starr's vocal line continues with eighth notes and a quarter note. The guitar parts continue their harmonic support. The bass line continues its eighth-note pattern.

7

DRUMS

SEQUENCE - JIM HUFF

RINGO STAR

GUITAR

GUITAR

BASS



10

VOCAL

DRUMS

SEQUENCE - JIM HUFF

RINGO STAR

GUITAR

GUITAR

BASS

IT DON'T COME EASY

12

VOCAL

DRUMS

SEQUENCE - JIM HUFF

GUITAR

BASS

IT DON'T COME EASY

Detailed description: This block contains the musical notation for measures 12 and 13. The vocal line features a melodic phrase starting with a quarter note followed by a dotted quarter note. The drums play a consistent pattern of eighth notes. The 'SEQUENCE - JIM HUFF' part consists of a simple eighth-note bass line. The guitar part has a complex, multi-measure rest in measure 12, followed by a melodic line in measure 13. The bass line is a simple eighth-note pattern. The lyrics 'IT DON'T COME EASY' are written below the guitar staff.



14

VOCAL

DRUMS

SEQUENCE - JIM HUFF

GUITAR

BASS

IT DON'T COME EASY

Detailed description: This block contains the musical notation for measures 14 and 15. The vocal line continues the melodic phrase from the previous block. The drums maintain their eighth-note pattern. The 'SEQUENCE - JIM HUFF' part is a simple eighth-note bass line. The guitar part features a melodic line with a sharp sign in measure 14, followed by a more complex melodic line in measure 15. The bass line has a long note in measure 14 and a simple eighth-note pattern in measure 15. The lyrics 'IT DON'T COME EASY' are written below the guitar staff.

16

VOCAL

DRUMS

SEQUENCE - JIM HUFF

GUITAR

BASS



19

VOCAL

DRUMS

SEQUENCE - JIM HUFF

GUITAR

BASS

21

VOCAL

DRUMS

SEQUENCE - JIM HUFF

GUITAR

BASS



23

VOCAL

DRUMS

SEQUENCE - JIM HUFF

GUITAR

BASS

STRINGS

25

VOCAL

DRUMS

SEQUENCE - JIM HUFF

GUITAR

BASS

STRINGS



27

VOCAL

DRUMS

SEQUENCE - JIM HUFF

GUITAR

BASS

IT DON'T COME EASY

STRINGS

29

VOCAL

DRUMS

SEQUENCE - JIM HUFF

GUITAR

BASS

IT DON'T COME EASY

STRINGS



31

VOCAL

DRUMS

SEQUENCE - JIM HUFF

GUITAR

BASS

33

VOCAL

DRUMS

SEQUENCE - JIM HUFF

GUITAR

BASS



35

VOCAL

DRUMS

SEQUENCE - JIM HUFF

GUITAR

BASS

37

VOCAL

DRUMS

SEQUENCE - JIM HUFF

GUITAR

BASS



39

DRUMS

SEQUENCE - JIM HUFF

RINGO STAR

GUITAR

GUITAR

BASS

41

DRUMS

SEQUENCE - JIM HUFF

RINGO STAR

GUITAR

GUITAR

BASS



43

DRUMS

SEQUENCE - JIM HUFF

RINGO STAR

GUITAR

GUITAR

BASS

45

DRUMS

SEQUENCE - JIM HUFF

RINGO STAR

GUITAR

GUITAR

BASS



47

VOCAL

DRUMS

SEQUENCE - JIM HUFF

GUITAR

BASS

IT DON'T COME EASY

STRINGS

49

VOCAL

DRUMS

SEQUENCE - JIM HUFF

GUITAR

BASS

IT DON'T COME EASY

STRINGS



51

VOCAL

DRUMS

SEQUENCE - JIM HUFF

GUITAR

BASS

STRINGS

53

VOCAL

DRUMS

SEQUENCE - JIM HUFF

GUITAR

BASS

STRINGS



55

VOCAL

DRUMS

SEQUENCE - JIM HUFF

GUITAR

BASS

STRINGS

57

VOCAL

DRUMS

SEQUENCE - JIM HUFF

GUITAR

BASS

IT DON'T COME EASY

STRINGS



59

VOCAL

DRUMS

SEQUENCE - JIM HUFF

GUITAR

BASS

IT DON'T COME EASY

STRINGS

61

VOCAL

DRUMS

SEQUENCE - JIM HUFF

GUITAR

BASS

IT DON'T COME EASY

STRINGS



63

VOCAL

DRUMS

SEQUENCE - JIM HUFF

GUITAR

BASS

STRINGS

65

VOCAL

DRUMS

SEQUENCE - JIM HUFF

GUITAR

BASS

STRINGS



67

VOCAL

DRUMS

SEQUENCE - JIM HUFF

GUITAR

BASS

STRINGS

69

VOCAL

DRUMS

SEQUENCE - JIM HUFF

GUITAR

BASS

STRINGS

Detailed description: This block contains the musical score for measures 69 and 70. It features six staves: Vocal (treble clef), Drums (percussion clef), Sequence - Jim Huff (percussion clef), Guitar (treble clef), Bass (bass clef), and Strings (bass clef). The vocal line consists of eighth and quarter notes. The drums and sequence parts show a consistent rhythmic pattern. The guitar and bass parts feature chords and melodic lines, while the strings provide a harmonic accompaniment.



71

DRUMS

SEQUENCE - JIM HUFF

RINGO STAR

GUITAR

GUITAR

BASS

STRINGS

Detailed description: This block contains the musical score for measures 71 and 72. It features six staves: Drums (percussion clef), Sequence - Jim Huff (percussion clef), Ringo Star (treble clef), Guitar (treble clef), another Guitar (treble clef), Bass (bass clef), and Strings (bass clef). The Ringo Star and the first guitar part have a melodic line with a triplet in measure 72. The drums and sequence parts continue the rhythmic pattern. The second guitar part features a complex chordal accompaniment. The bass and strings provide a steady harmonic foundation.

73

DRUMS

SEQUENCE - JIM HUFF

RINGO STAR

GUITAR

GUITAR

BASS

STRINGS



75

DRUMS

SEQUENCE - JIM HUFF

RINGO STAR

GUITAR

GUITAR

BASS

STRINGS

77

DRUMS

SEQUENCE - JIM HUFF

RINGO STAR

GUITAR

GUITAR

BASS

STRINGS



79

VOCAL

DRUMS

SEQUENCE - JIM HUFF

GUITAR

BASS

IT DON'T COME EASY

STRINGS

81

VOCAL

DRUMS

SEQUENCE - JIM HUFF

GUITAR

BASS

IT DON'T COME EASY

STRINGS



83

VOCAL

DRUMS

SEQUENCE - JIM HUFF

GUITAR

BASS

IT DON'T COME EASY

STRINGS

VOCAL

Ringo Starr - It Don't Come Easy

♩ = 130,000137

10

14

19

23

28

32

36

8

47



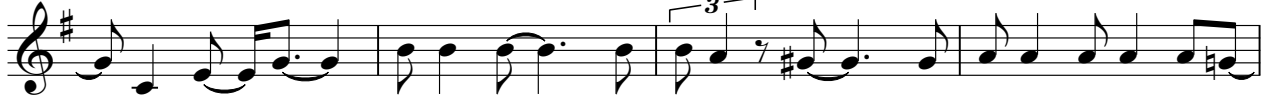
51



55



60



64



68



80



DRUMS

Ringo Starr - It Don't Come Easy

♩ = 130,000137
2

6

10

13

17

21

24

28

31

35

V.S.

DRUMS

38

41

45

48

52

56

60

63

67

70

DRUMS

73

Musical notation for drum set at measure 73. The notation is on a five-line staff with a double bar line at the beginning. The top line contains 'x' marks representing cymbals, and the bottom line contains notes representing the drum kit. The notes include quarter notes, eighth notes, and sixteenth notes, with some notes marked with an asterisk to indicate a specific drum sound.

76

Musical notation for drum set at measure 76. The notation is on a five-line staff with a double bar line at the beginning. The top line contains 'x' marks representing cymbals, and the bottom line contains notes representing the drum kit. The notes include quarter notes, eighth notes, and sixteenth notes, with some notes marked with an asterisk to indicate a specific drum sound.

80

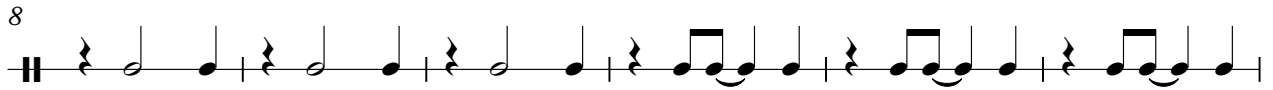
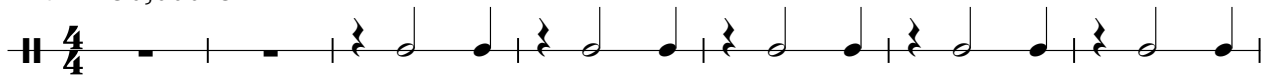
Musical notation for drum set at measure 80. The notation is on a five-line staff with a double bar line at the beginning. The top line contains 'x' marks representing cymbals, and the bottom line contains notes representing the drum kit. The notes include quarter notes, eighth notes, and sixteenth notes, with some notes marked with an asterisk to indicate a specific drum sound.

82

Musical notation for drum set at measure 82. The notation is on a five-line staff with a double bar line at the beginning. The top line contains 'x' marks representing cymbals, and the bottom line contains notes representing the drum kit. The notes include quarter notes, eighth notes, and sixteenth notes, with some notes marked with an asterisk to indicate a specific drum sound.

Ringo Starr - It Don't Come Easy
SEQUENCE - JIM HUFF

♩ = 130,000137



V.S.

RINGO STAR

Ringo Starr - It Don't Come Easy

♩ = 130,000137

2

6

11

28

42

47

24

74

77

7

GUITAR

Ringo Starr - It Don't Come Easy

♩ = 130,000137

2

6

11

28

42

47

24

74

77

7

Detailed description: This is a guitar tab for the song 'It Don't Come Easy' by Ringo Starr. The music is written in 4/4 time with a tempo of 130,000137. The key signature has one sharp (F#). The score consists of seven staves of music. The first staff starts with a fret number '2' above the first measure. The second staff starts with a fret number '6' above the first measure. The third staff starts with a fret number '11' above the first measure and contains a measure with a fret number '28' above it. The fourth staff starts with a fret number '42' above the first measure. The fifth staff starts with a fret number '47' above the first measure and contains a measure with a fret number '24' above it. The sixth staff starts with a fret number '74' above the first measure. The seventh staff starts with a fret number '77' above the first measure and contains a measure with a fret number '7' above it. The music features a repeating melodic line: F#4 (quarter), G4 (quarter), A4 (quarter), B4 (quarter), A4-G4 (beamed eighth notes), F#4 (quarter), E4 (quarter), D4 (quarter), C4 (quarter). There are several triplet markings (3) and a double bar line with a repeat sign at the end of the seventh staff.

GUITAR

Ringo Starr - It Don't Come Easy

♩ = 130,000137

2

6

9

13

16

19

22

26

30

33

V.S.

This image displays ten staves of guitar sheet music, numbered 36 through 65. The notation is written in a standard staff with a treble clef and a key signature of one sharp (F#). The music consists of a melodic line in the upper voice and a harmonic accompaniment in the lower voice. The accompaniment is primarily composed of chords and dyads, often with a rhythmic pattern of eighth notes. The melodic line features various rhythmic values, including eighth and sixteenth notes, and rests. The music is divided into measures, with measure numbers 36, 39, 42, 45, 49, 52, 55, 59, 63, and 65 explicitly labeled at the beginning of their respective staves. The notation includes various musical symbols such as stems, beams, slurs, and accidentals.

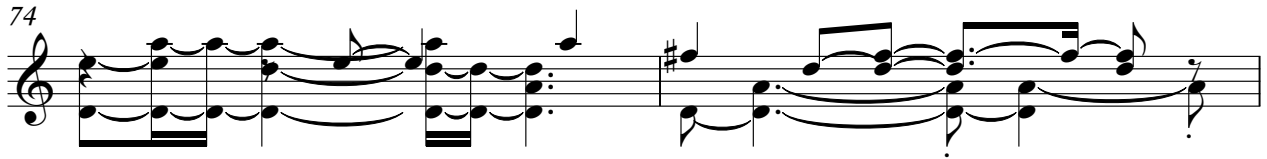
68



71



74



76



79



82



BASS

Ringo Starr - It Don't Come Easy

♩ = 130,000137

2

8

14

20

26

31

37

43

49

55

V.S.

Ringo Starr - It Don't Come Easy
IT DON'T COME EASY

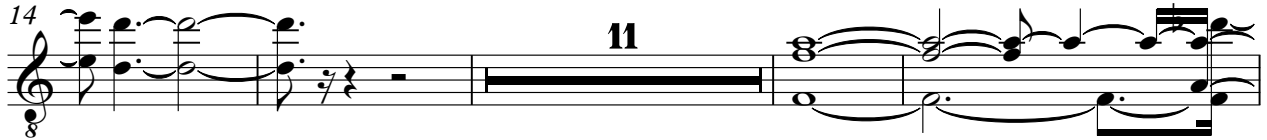
♩ = 130,000137

10



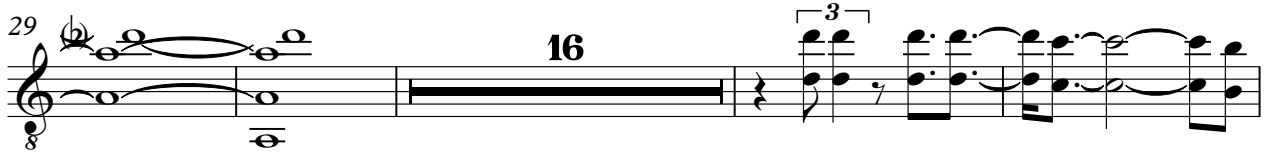
14

11



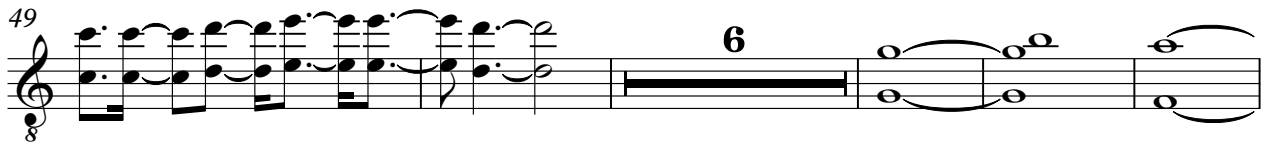
29

16



49

6



60

16



79



81

2



STRINGS

Ringo Starr - It Don't Come Easy

♩ = 130,000137

22

26

28

31

16

49

53

55

58

60

63

V.S.

2

STRINGS

66

69

73

76

79

82