

# 4 käskyä

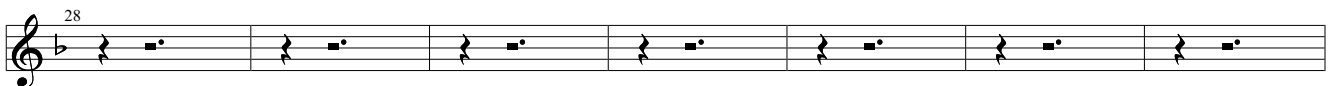
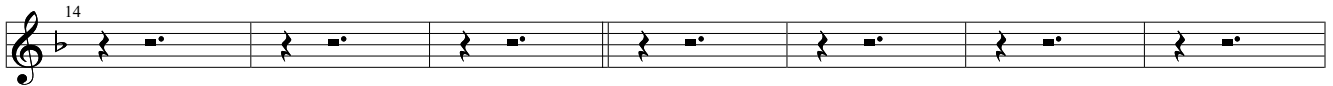
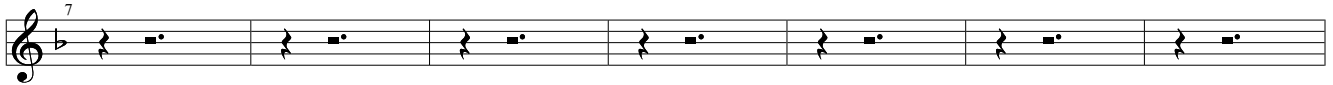
## Turmion Kätilöt

### Hoitovirhe

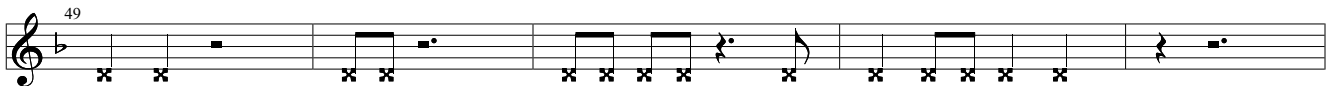
Dropped D  
⑥=D

Moderate ♩ = 145

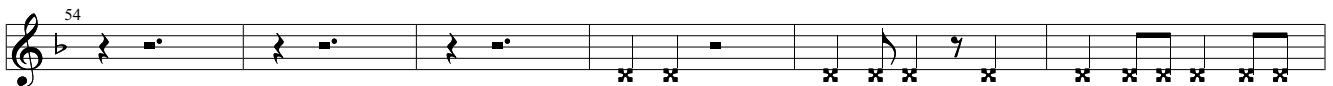
#### Intro



#### Verse

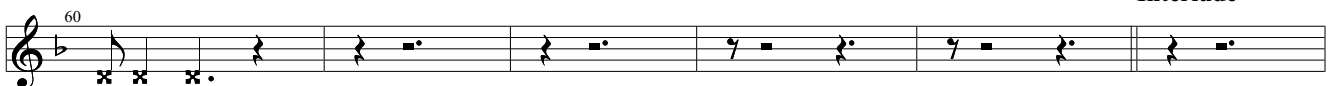


*f*  
Mars sin Y li Y lit se si Ja pääl lä si tans sin

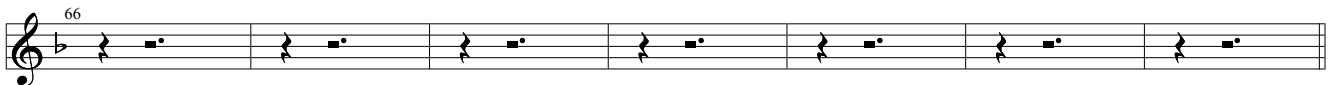


Ää ni Huu to ni Saa nyrk kin ne tai vas ta

#### Interlude



ta ko maan



#### Verse



Käs ken Käs ky ni tei dän ja lat pa kot taa liik ku maan

78  
Aa te Us ko si Sy tyt tää tai vaat

**Chorus**

84  
pa la maan Hak kaa mars si

90  
tu ho a rai vaa Mi nä käs ken si nä

96  
us kot Hak kaa mars si tu ho a rai vaa Mi nä

**Bridge**

102  
käs ken si nä us kot

108  
A sen to

114  
Kyyk kyyn Y lös Paik ka Is tu Maa han A las

120  
Kuun te le Ru koi le ar mo a a ne le pol vis tu ja kä te si ris

124  
tiin lai ta Kur jat us kot to mat ku ris tu vat ei kä us ko tei tä

128  
tah do mu kaan mukaan... mukaan... mukaan... mukaan... mukaan... mukaan...

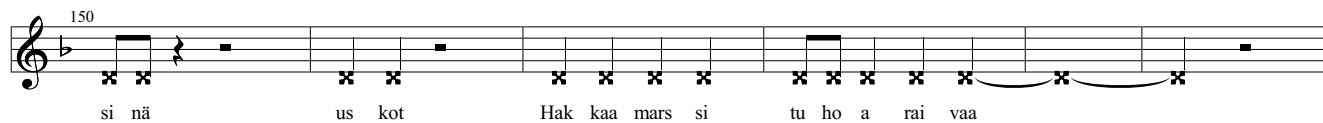
**Chorus**

133  
Hak kaa mars si tu ho a rai vaa

139  
Mi nä käs ken si nä us kot

144  
Hak kaa mars si tu ho a rai vaa Mi nä käs ken

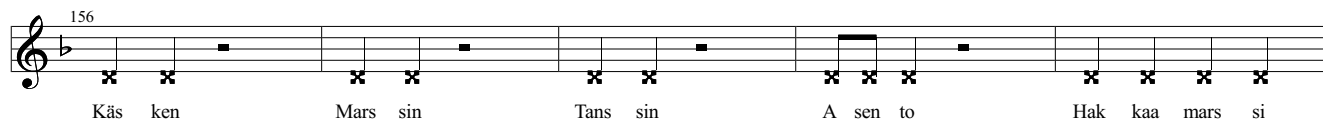
150



si nä us kot Hak kaa mars si tu ho a rai vaa

Detailed description: This is the first musical staff, starting at measure 150. It features a treble clef and a key signature of one flat. The melody consists of eighth and quarter notes. The lyrics are: 'si nä us kot Hak kaa mars si tu ho a rai vaa'. There are 'x' marks on the staff indicating fret positions for guitar.

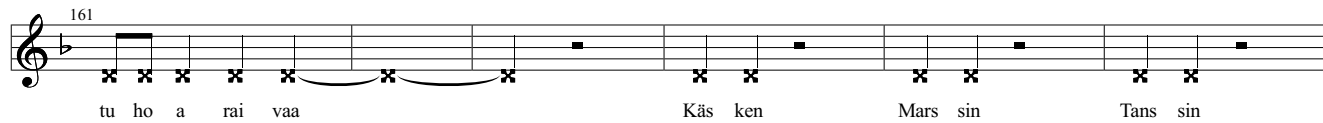
156



Käs ken Mars sin Tans sin A sen to Hak kaa mars si

Detailed description: This is the second musical staff, starting at measure 156. It continues the melody from the previous staff. The lyrics are: 'Käs ken Mars sin Tans sin A sen to Hak kaa mars si'. There are 'x' marks on the staff indicating fret positions for guitar.

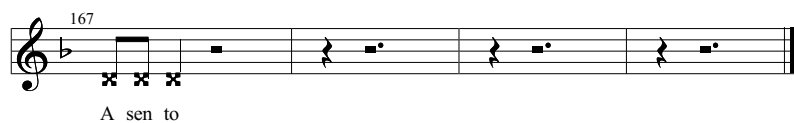
161



tu ho a rai vaa Käs ken Mars sin Tans sin

Detailed description: This is the third musical staff, starting at measure 161. It continues the melody. The lyrics are: 'tu ho a rai vaa Käs ken Mars sin Tans sin'. There are 'x' marks on the staff indicating fret positions for guitar.

167



A sen to

Detailed description: This is the fourth musical staff, starting at measure 167. It concludes the phrase with the lyrics 'A sen to'. The staff ends with a double bar line. There are 'x' marks on the staff indicating fret positions for guitar.