

Beatles - Sgt. Pepper's Lonely Hearts Club Band (Reprise)

♩ = 120,000000

Bass Drum

Snare Drum

Hihats

Rimshots

Snare fills

Guitars

Bass



6

Bass Drum

Snare Drum

Hihats

Rimshots

Snare fills

Guitars

Bass

Lead Brass

9

Bass Drum

Snare Drum

Hihats

Rimshots

Snare fills

Guitars

Electric Guit

Bass

Lead Brass



12

Bass Drum

Snare Drum

Hihats

-----

Rimshots

Snare fills

Guitars

Electric Guit

Bass

Lead Brass

15

Bass Drum

Snare Drum

Hihats

-----

Rimshots

Snare fills

Guitars

Electric Guit

Bass

Lead Brass



19

Bass Drum

Snare Drum

Hihats

-----

Rimshots

Snare fills

Guitars

Electric Guit

Bass

Lead Brass

Bass Drum

Snare Drum

Hihats

-----

Rimshots

Snare fills

Guitars

Electric Guit

Bass

Lead Brass



Bass Drum

Snare Drum

Hihats

-----

Rimshots

Snare fills

Guitars

Electric Guit

Bass

Lead Brass

28

Bass Drum

Snare Drum

Hihats

-----

Rimshots

Snare fills

Guitars

Electric Guit

Bass

Lead Brass



31

Bass Drum

Snare Drum

Hihats

-----

Rimshots

Snare fills

Guitars

Electric Guit

Bass

Lead Brass

Bass Drum



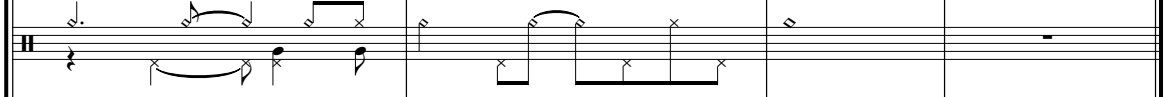
Musical notation for Bass Drum, showing a rhythmic pattern of eighth and sixteenth notes.

Snare Drum



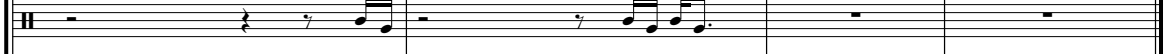
Musical notation for Snare Drum, showing a rhythmic pattern of quarter and eighth notes.

Hihats



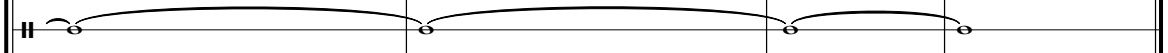
Musical notation for Hihats, showing a rhythmic pattern of eighth and sixteenth notes with accents.

-----



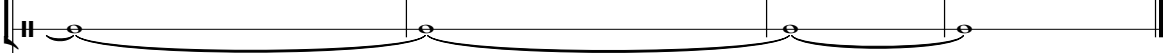
Musical notation for Percussion, showing a rhythmic pattern of quarter and eighth notes.

Rimshots



Musical notation for Rimshots, showing a rhythmic pattern of quarter notes with a long slur.

Snare fills



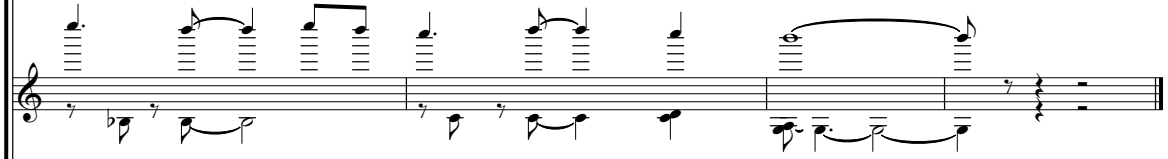
Musical notation for Snare fills, showing a rhythmic pattern of quarter notes with a long slur.

Guitars



Musical notation for Guitars, showing a rhythmic pattern of eighth and sixteenth notes with chords.

Electric Guit



Musical notation for Electric Guit, showing a rhythmic pattern of eighth and sixteenth notes with chords.

Bass



Musical notation for Bass, showing a rhythmic pattern of eighth and sixteenth notes.

Lead Brass



Musical notation for Lead Brass, showing a rhythmic pattern of quarter notes.

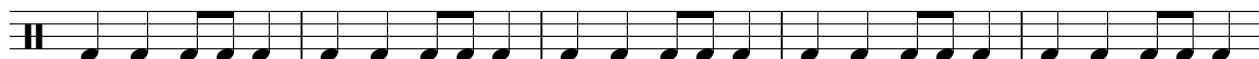
Bass Drum

Beatles - Sgt. Pepper's Lonely Hearts Club Band (Repri:

♩ = 120,000000



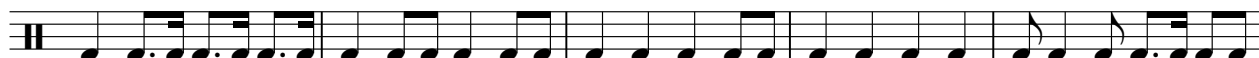
6



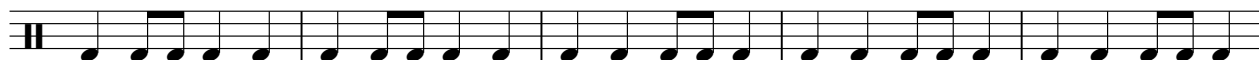
11



16



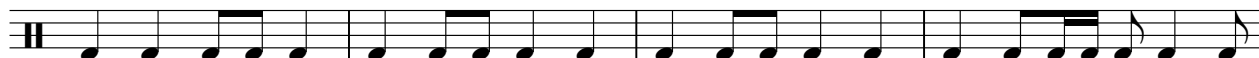
21



26



31



35



Snare Drum

Beatles - Sgt. Pepper's Lonely Hearts Club Band (Repri:

♩ = 120,000000



7



13



18



23



28



33







Beatles - Sgt. Pepper's Lonely Hearts Club Band (Repri:

♩ = 120,000000

11 3

Musical notation for measures 11 and 12. Measure 11 contains a whole rest. Measure 12 contains a quarter rest followed by a triplet of eighth notes.

17 3 2

Musical notation for measures 17 and 18. Measure 17 contains a quarter rest followed by a triplet of eighth notes. Measure 18 contains a half rest followed by a quarter note.

25 2

Musical notation for measures 25 and 26. Measure 25 contains a whole note. Measure 26 contains a quarter rest followed by a quarter note.

32

Musical notation for measures 32 and 33. Measure 32 contains a quarter note followed by a quarter rest. Measure 33 contains a quarter note followed by a quarter rest.

35 2

Musical notation for measures 35 and 36. Measure 35 contains a quarter rest followed by a quarter note. Measure 36 contains a quarter rest followed by a quarter note.

Rimshots

Beatles - Sgt. Pepper's Lonely Hearts Club Band (Repri:

♩ = 120,000000

4/4

5

9

13

17

21

25

29

33

Detailed description: The image displays a musical score for rimshots in 4/4 time. The tempo is marked as 120,000000 (likely 120 BPM). The notation consists of nine staves, each representing a measure of music. The first measure is labeled with a 4/4 time signature. Measures 1 through 32 feature a consistent rhythmic pattern of eighth notes, with each note having a vertical line through its stem to indicate a rimshot. The notes are grouped in pairs across four beats per measure. The final measure, measure 33, deviates from this pattern, showing a series of five half notes with curved lines (slurs) above them, indicating a change in the rhythmic texture.

Snare fills

Beatles - Sgt. Pepper's Lonely Hearts Club Band (Repri:

♩ = 120,000000

5

9

13

17

21

25

29

33

Detailed description: The image shows a series of ten musical staves for snare fills. The first staff is in 4/4 time and includes a tempo marking of 120,000000. Each staff contains a sequence of eighth notes. The first nine staves (measures 1-29) consist of continuous eighth-note patterns. The tenth staff (measures 30-33) shows a transition from eighth notes to a series of five dotted half notes, each with a slur underneath.

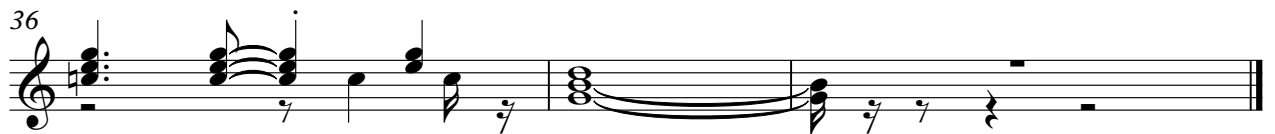
Beatles - Sgt. Pepper's Lonely Hearts Club Band (Repri:

Guitars

♩ = 120,000000

The image displays a guitar score for the 'Sgt. Pepper's Lonely Hearts Club Band (Reprise)' by The Beatles. The score is written in 4/4 time and consists of ten staves of music, numbered 4, 7, 9, 11, 13, 15, 17, 20, 22, and 24. The notation includes various chords, melodic lines, and rhythmic patterns. The key signature changes from C major to Bb major at measure 11. The score is presented in a standard musical notation format with a treble clef and a 4/4 time signature.

V.S.



♩ = 120,000000

8

12

16

21

24

28

33

36

Beatles - Sgt. Pepper's Lonely Hearts Club Band (Repri:

Bass

♩ = 120,000000

3



7



10



13



16



19



22



25



28



32



V.S.



2

Bass

35



Lead Brass

Beatles - Sgt. Pepper's Lonely Hearts Club Band (Repri:

♩ = 120,000000

7

11

15

19

23

27

31

34

3