

The Cars - It's All I Can Do

♩ = 120,000000

Drums

Bass

Rhythm Guitar

E-Piano



3

Drums

Bass

Rhythm Guitar

E-Piano

5

Drums

Bass

Rhythm Guitar

E-Piano

Detailed description: This block contains the musical notation for measures 5 and 6. It features four staves: Drums (top), Bass (second), Rhythm Guitar (third), and E-Piano (bottom). The Drums staff uses a drum set icon and shows a consistent rhythmic pattern of eighth notes with 'x' marks. The Bass staff is in bass clef with a key signature of one flat, showing a sequence of eighth notes and rests. The Rhythm Guitar staff is in bass clef with a key signature of one flat, showing chords and rests. The E-Piano staff is in treble clef with a key signature of one flat, showing a melodic line with eighth notes and rests.



7

Melody

Drums

Bass

Rhythm Guitar

E-Piano

Detailed description: This block contains the musical notation for measures 7 and 8. It features five staves: Melody (top), Drums (second), Bass (third), Rhythm Guitar (fourth), and E-Piano (bottom). The Melody staff is in treble clef with a key signature of one flat, showing rests followed by a quarter note. The Drums staff uses a drum set icon and shows a consistent rhythmic pattern of eighth notes with 'x' marks. The Bass staff is in bass clef with a key signature of one flat, showing a sequence of eighth notes and rests. The Rhythm Guitar staff is in bass clef with a key signature of one flat, showing chords and rests. The E-Piano staff is in treble clef with a key signature of one flat, showing a melodic line with eighth notes and rests.

9

Melody

Drums

Bass

Rhythm Guitar

E-Piano



11

Melody

Drums

Bass

Rhythm Guitar

E-Piano

13

Melody

Drums

Bass

Rhythm Guitar

E-Piano

Detailed description: This block contains the musical notation for measures 13 and 14. It features five staves: Melody (treble clef), Drums (drum set notation), Bass (bass clef), Rhythm Guitar (bass clef), and E-Piano (treble clef). The key signature has one flat (B-flat). The melody consists of eighth and quarter notes. The drums play a consistent eighth-note pattern. The bass and rhythm guitar provide harmonic support with chords and single notes. The E-piano part features a melodic line in the first half of each measure and chordal accompaniment in the second half.



15

Melody

Drums

Bass

Rhythm Guitar

E-Piano

Detailed description: This block contains the musical notation for measures 15 and 16. It features five staves: Melody (treble clef), Drums (drum set notation), Bass (bass clef), Rhythm Guitar (bass clef), and E-Piano (treble clef). The key signature has one flat (B-flat). The melody continues with eighth and quarter notes. The drums maintain the eighth-note pattern. The bass and rhythm guitar parts are similar to the previous section. The E-piano part continues with its melodic and chordal accompaniment.

17

Melody

Drums

Lead Guitar

Bass

Rhythm Guitar

E-Piano



19

Melody

Drums

Lead Guitar

Bass

Rhythm Guitar

E-Piano

21

Melody

Drums

Lead Guitar

Bass

Rhythm Guitar

E-Piano



23

Melody

Drums

Lead Guitar

Bass

Rhythm Guitar

E-Piano

25

Melody

Drums

Lead Guitar

Bass

Rhythm Guitar

Synth



27

Melody

Drums

Lead Guitar

Bass

Rhythm Guitar

Synth

29

Melody

Drums

Lead Guitar

Bass

Rhythm Guitar

Synth



31

Melody

Drums

Lead Guitar

Bass

Rhythm Guitar

Synth

33

Melody

Drums

Lead Guitar

Bass

Rhythm Guitar

E-Piano

Synth



35

Melody

Drums

Bass

Rhythm Guitar

E-Piano

37

Melody

Drums

Bass

Rhythm Guitar

E-Piano



39

Melody

Drums

Bass

Rhythm Guitar

E-Piano

41

Melody

Drums

Lead Guitar

Bass

Rhythm Guitar

E-Piano

Detailed description: This block contains the musical notation for measures 41 and 42. The score is arranged in a system with six staves. The Melody staff (treble clef) shows a half rest in measure 41 and a quarter note G4 in measure 42, followed by eighth notes A4, B4, C5, and B4. The Drums staff (drum clef) features a consistent eighth-note pattern with 'x' marks on the snare and tom-toms. The Lead Guitar staff (treble clef) has a tab for measure 41 with frets 1 and 2 on strings 4 and 5, and a triplet of fret 3 on string 1 in measure 42. The Bass staff (bass clef) has a half rest in measure 41 and a quarter note G2 in measure 42, followed by eighth notes A2, B2, C3, and B2. The Rhythm Guitar staff (bass clef) has a half rest in measure 41 and a quarter note G2 in measure 42, followed by eighth notes A2, B2, C3, and B2. The E-Piano staff (treble clef) has a half note G4 in measure 41 and a quarter note G4 in measure 42, followed by eighth notes A4, B4, C5, and B4.



43

Melody

Drums

Lead Guitar

Bass

Rhythm Guitar

E-Piano

Detailed description: This block contains the musical notation for measures 43 and 44. The score is arranged in a system with six staves. The Melody staff (treble clef) shows a quarter note G4 in measure 43, a half rest in measure 44, and a quarter note G4 in measure 45, followed by eighth notes A4, B4, C5, and B4. The Drums staff (drum clef) features a consistent eighth-note pattern with 'x' marks on the snare and tom-toms. The Lead Guitar staff (treble clef) has a tab for measure 43 with frets 2 and 6 on strings 4 and 5, and a triplet of fret 3 on string 1 in measure 44. The Bass staff (bass clef) has a half rest in measure 43 and a quarter note G2 in measure 44, followed by eighth notes A2, B2, C3, and B2. The Rhythm Guitar staff (bass clef) has a half rest in measure 43 and a quarter note G2 in measure 44, followed by eighth notes A2, B2, C3, and B2. The E-Piano staff (treble clef) has a half note G4 in measure 43 and a quarter note G4 in measure 44, followed by eighth notes A4, B4, C5, and B4.

45

Melody

Drums

Lead Guitar

Bass

Rhythm Guitar

E-Piano



47

Melody

Drums

Lead Guitar

Bass

Rhythm Guitar

E-Piano

51

Melody

Drums

Lead Guitar

Bass

Rhythm Guitar

Synth



53

Melody

Drums

Lead Guitar

Bass

Rhythm Guitar

Synth

55

Melody

Drums

Lead Guitar

Bass

Rhythm Guitar

Synth



57

Melody

Drums

Lead Guitar

Bass

Rhythm Guitar

Synth

59

Drums

Lead Guitar

Bass

Rhythm Guitar

Synth



61

Drums

Lead Guitar

Bass

Rhythm Guitar

63

Drums

Lead Guitar

Bass

Rhythm Guitar

8 5 10 8 8 6 6 3 1 2 1 2



65

Drums

Lead Guitar

Bass

Rhythm Guitar

2 3 0 2 3 2 0 2 0 1 3 1 1 3 1 5

67

Melody

Drums

Lead Guitar

Bass

Rhythm Guitar

E-Piano

Synth

5 5 5 3 1 0 7 8

T
A
B

69

Melody

Drums

Bass

Rhythm Guitar

E-Piano

Synth



71

Melody

Drums

Bass

Rhythm Guitar

E-Piano

Synth

73

Melody

Drums

Bass

Rhythm Guitar

E-Piano

Synth

Detailed description: This is a multi-staff musical score for a rock band. The score is in 4/4 time and features a key signature of one flat (B-flat). The Melody part is written in a treble clef and begins with a whole rest, followed by a quarter rest, then a series of eighth notes (B-flat, A, G, F, E, D, C) and a quarter note (B-flat) with a fermata. The Drums part uses a standard drum notation with 'x' marks for cymbals and solid circles for snare and bass drum. The Bass part is in a bass clef, playing a simple eighth-note pattern. The Rhythm Guitar part is also in a bass clef, playing a similar eighth-note pattern. The E-Piano part is in a treble clef, playing a simple eighth-note pattern. The Synth part is in a treble clef, playing a simple eighth-note pattern.

75

Melody

Drums

Lead Guitar

T			
A			
B	3	3	2
	1	1	0

Bass

Rhythm Guitar

E-Piano

Synth

77

Melody

Drums

Lead Guitar

T									
A									
B	6	6	3	3	3	2			
	6	6	0	1	1	0			

Bass

Rhythm Guitar

E-Piano

Synth

79

Melody

Drums

Lead Guitar

Bass

Rhythm Guitar

E-Piano

Synth

81

Melody

Drums

Lead Guitar

T									
A									
B	6	6	3	3	3	2			
	6	6	0	1	1	0			

Bass

Rhythm Guitar

E-Piano

Synth

83

Melody

Drums

Lead Guitar

Bass

Rhythm Guitar

E-Piano

Synth

85

Melody

Drums

Lead Guitar

Bass

Rhythm Guitar

Synth



87

Melody

Drums

Lead Guitar

Bass

Rhythm Guitar

Synth

89

Melody

Drums

Lead Guitar

Bass

Rhythm Guitar

Synth



91

Melody

Drums

Lead Guitar

Bass

Rhythm Guitar

Synth

93

Melody

Drums

Lead Guitar

Bass

Rhythm Guitar

Synth



95

Melody

Drums

Lead Guitar

Bass

Rhythm Guitar

Synth

97

Melody

Drums

Lead Guitar

Bass

Rhythm Guitar

Synth



99

Melody

Drums

Lead Guitar

Bass

Rhythm Guitar

Synth

The Cars - It's All I Can Do

Melody

♩ = 120,000000

7

12

17

22

27

32

37

42

47

52

V.S.

57

9

70

75

80

85

90

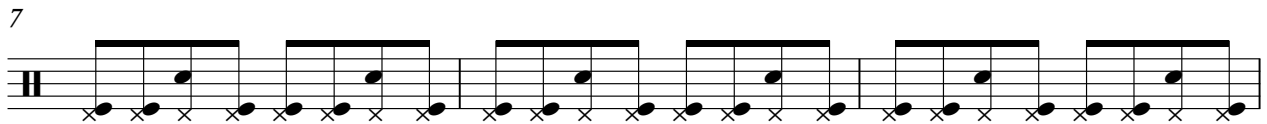
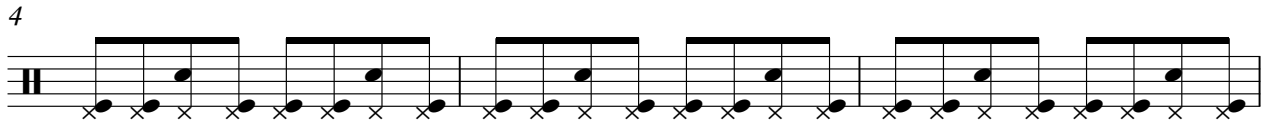
95

98

The Cars - It's All I Can Do

Drums

♩ = 120,000000



V.S.

31



34



37



40



43



46



49



52



55



58



61

Musical notation for measure 61, featuring a drum set icon on the left and a staff with rhythmic notation consisting of eighth notes and rests.

64

Musical notation for measure 64, featuring a drum set icon on the left and a staff with rhythmic notation consisting of eighth notes and rests.

67

Musical notation for measure 67, featuring a drum set icon on the left and a staff with rhythmic notation consisting of eighth notes and rests.

70

Musical notation for measure 70, featuring a drum set icon on the left and a staff with rhythmic notation consisting of eighth notes and rests.

73

Musical notation for measure 73, featuring a drum set icon on the left and a staff with rhythmic notation consisting of eighth notes and rests.

76

Musical notation for measure 76, featuring a drum set icon on the left and a staff with rhythmic notation consisting of eighth notes and rests.

79

Musical notation for measure 79, featuring a drum set icon on the left and a staff with rhythmic notation consisting of eighth notes and rests.

82

Musical notation for measure 82, featuring a drum set icon on the left and a staff with rhythmic notation consisting of eighth notes and rests.

85

Musical notation for measure 85, featuring a drum set icon on the left and a staff with rhythmic notation consisting of eighth notes and rests.

88

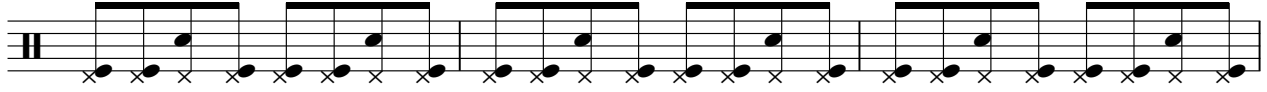
Musical notation for measure 88, featuring a drum set icon on the left and a staff with rhythmic notation consisting of eighth notes and rests.

V.S.

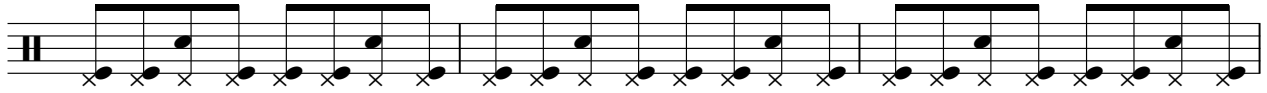
4

Drums

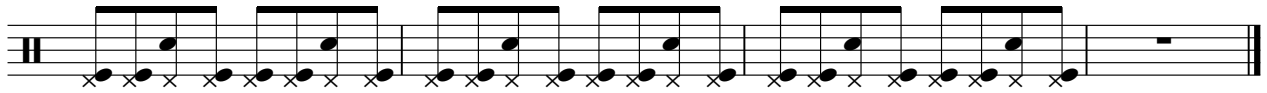
91



94



97



The Cars - It's All I Can Do

Lead Guitar

♩ = 120,000000
16

21

E									
B									
A									
D									
G									
E									
A									

26

T									
A									
B									

31

T									
A									
B									

8

43

T									
A									
B									

48

T									
A									
B									

53

T									
A									
B									

57

T									
A									
B									

62

T									
A									
B									

66

T									
A									
B									

8

T									
A									
B									

The Cars - It's All I Can Do

Bass

♩ = 120,000000



6



11



16



21



26



30



34



39



44

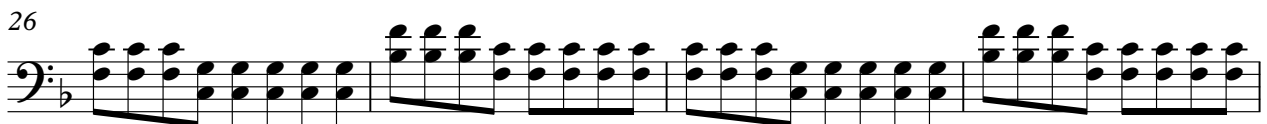


V.S.

92



♩ = 120,000000



49



53



57



61



65



69



74



79



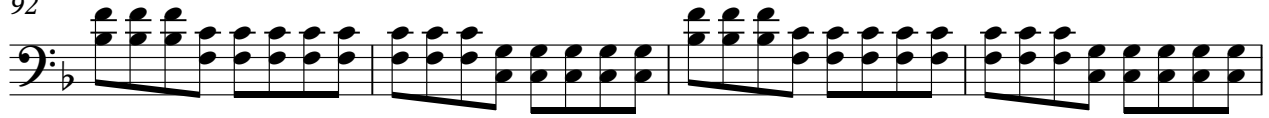
84



88



92



96



98



E-Piano

The Cars - It's All I Can Do

♩ = 120,000000



V.S.

49

16



69



74



79



82

17



The Cars - It's All I Can Do

Synth

♩ = 120,000000

24

28

33

15

52

57

8

71

79

86

91

96