

The Eagles - Love Will Keep Us Alive

♩ = 98,999939

Percussion

Jazz Guitar

Fretless Electric Bass

4

Perc.

J. Gtr.

Kora

E. Bass

6

A. Fl.

Perc.

J. Gtr.

Kora

E. Bass

9

A. Fl.

Perc.

J. Gtr.

E. Bass

12

A. Fl.

Perc.

J. Gtr.

E. Bass

15

A. Fl.

Perc.

J. Gtr.

Kora

E. Bass

18

A. Fl.

Perc.

J. Gtr.

E. Bass

21

A. Fl.

Perc.

J. Gtr.

E. Bass

24

A. Fl.

Perc.

J. Gtr.

E. Bass

27

A. Fl.

Perc.

J. Gtr.

E. Bass

30

A. Fl.

Perc.

J. Gtr.

Kora

E. Bass

33

A. Fl.

Perc.

J. Gtr.

E. Bass

36

A. Fl.

Pan.

Perc.

J. Gtr.

E. Bass

39

A. Fl.

Pan.

Perc.

J. Gtr.

E. Bass

42

A. Fl.

Pan.

Perc.

J. Gtr.

E. Bass

45

A. Fl.

Pan.

Perc.

J. Gtr.

E. Bass

48

A. Fl.

Perc.

J. Gtr.

E. Bass

51

A. Fl.
Pan.
Perc.
J. Gtr.
E. Bass

This musical system covers measures 51 to 53. It features five staves: A. Fl. (Alto Flute), Pan. (Pans), Perc. (Percussion), J. Gtr. (Jazz Guitar), and E. Bass (Electric Bass). The A. Fl. and Pan. parts are in treble clef, while the E. Bass is in bass clef. The Perc. part is on a single-line staff. The music includes various note values, rests, and accidentals.

54

A. Fl.
Pan.
Perc.
J. Gtr.
Kora
E. Bass

This musical system covers measures 54 to 56. It features six staves: A. Fl., Pan., Perc., J. Gtr., Kora, and E. Bass. The A. Fl., Pan., and Kora parts are in treble clef, while the E. Bass is in bass clef. The Perc. part is on a single-line staff. The music includes various note values, rests, and accidentals.

57

Perc.

J. Gtr.

Kora

E. Bass

60

Perc.

J. Gtr.

Kora

E. Bass

63

A. Fl.
Pan.
Perc.
J. Gtr.
Kora
E. Bass

This musical system covers measures 63, 64, and 65. The A. Fl. and Pan. parts are in treble clef. The Perc. part is in a drum set notation. The J. Gtr. part is in treble clef with a key signature of one sharp (F#). The Kora part is in treble clef with a key signature of one sharp (F#). The E. Bass part is in bass clef. The music features a mix of eighth and quarter notes, with some rests and accidentals.

66

A. Fl.
Pan.
Perc.
J. Gtr.
E. Bass

This musical system covers measures 66, 67, and 68. The A. Fl. and Pan. parts are in treble clef. The Perc. part is in a drum set notation. The J. Gtr. part is in treble clef with a key signature of one sharp (F#). The E. Bass part is in bass clef. The music continues with similar rhythmic patterns and melodic lines as the previous system.

69

A. Fl.

Pan.

Perc.

J. Gtr.

E. Bass

72

A. Fl.

Perc.

J. Gtr.

E. Bass

75

A. Fl.

Perc.

J. Gtr.

E. Bass

78

A. Fl.

Perc.

J. Gtr.

Kora

E. Bass

81

A. Fl.

Perc.

J. Gtr.

E. Bass

84

A. Fl.
Pan.
Perc.
J. Gtr.
E. Bass

This system of music covers measures 84, 85, and 86. It features five staves: A. Fl., Pan., Perc., J. Gtr., and E. Bass. The A. Fl. and Pan. parts are in treble clef, while the E. Bass is in bass clef. The Perc. part uses a drum set notation. The J. Gtr. part is in treble clef. The E. Bass part is in bass clef. The key signature has one sharp (F#). The music consists of three measures. In measure 84, the A. Fl. and Pan. parts have a whole rest, followed by a quarter rest, then a quarter note G#4, and a quarter note A4. In measure 85, the A. Fl. and Pan. parts have a quarter note G#4, a quarter note A4, and a quarter rest. In measure 86, the A. Fl. and Pan. parts have a quarter note G#4, a quarter note A4, and a quarter note B4. The Perc. part has a consistent rhythmic pattern of eighth notes. The J. Gtr. part has a consistent rhythmic pattern of eighth notes. The E. Bass part has a half note G#2, a half note A2, and a whole note B2.

87

A. Fl.
Pan.
Perc.
J. Gtr.
Kora
E. Bass

This system of music covers measures 87, 88, and 89. It features six staves: A. Fl., Pan., Perc., J. Gtr., Kora, and E. Bass. The A. Fl., Pan., J. Gtr., and E. Bass are in treble clef, while the Kora is in bass clef. The Perc. part uses a drum set notation. The key signature has one sharp (F#). The music consists of three measures. In measure 87, the A. Fl. and Pan. parts have a whole rest. In measure 88, the A. Fl. and Pan. parts have a quarter rest, then a quarter note G#4, and a quarter note A4. In measure 89, the A. Fl. and Pan. parts have a quarter note G#4, a quarter note A4, and a quarter note B4. The Perc. part has a consistent rhythmic pattern of eighth notes. The J. Gtr. part has a consistent rhythmic pattern of eighth notes. The Kora part has a half note G#2, a half note A2, and a whole note B2. The E. Bass part has a half note G#2, a half note A2, and a whole note B2.

90

A. Fl.
Pan.
Perc.
J. Gtr.
Kora
E. Bass

This musical system covers measures 90, 91, and 92. The A. Fl. and Pan. parts are in treble clef, while the E. Bass is in bass clef. The Perc. part uses a drum set notation. The J. Gtr. part is in treble clef. The Kora part is in treble clef. The E. Bass part is in bass clef. The key signature has one sharp (F#). The time signature is 4/4. The A. Fl. part starts with a quarter note G4, followed by a quarter note A4, a quarter note B4, and a quarter note C5. The Pan. part starts with a quarter note G#4, followed by a quarter note A4, a quarter note B4, and a quarter note C5. The Perc. part has a steady eighth-note pattern. The J. Gtr. part has a steady eighth-note pattern. The Kora part has a quarter note G4, followed by a quarter note A4, and a quarter note B4. The E. Bass part has a quarter note G2, followed by a quarter note A2, and a quarter note B2.

93

A. Fl.
Pan.
Perc.
J. Gtr.
E. Bass

This musical system covers measures 93, 94, and 95. The A. Fl. and Pan. parts are in treble clef, while the E. Bass is in bass clef. The Perc. part uses a drum set notation. The J. Gtr. part is in treble clef. The E. Bass part is in bass clef. The key signature has one sharp (F#). The time signature is 4/4. The A. Fl. part starts with a quarter note G4, followed by a quarter note A4, and a quarter note B4. The Pan. part starts with a quarter note G#4, followed by a quarter note A4, a quarter note B4, and a quarter note C5. The Perc. part has a steady eighth-note pattern. The J. Gtr. part has a steady eighth-note pattern. The E. Bass part has a quarter note G2, followed by a quarter note A2, and a quarter note B2.

96

♩ = 82,000038

Perc.

A percussion staff with a double bar line at the beginning. It contains rhythmic notation consisting of eighth notes and quarter notes, with some notes marked with an accent (^) and a slash (/). The staff ends with a double bar line.

J. Gtr.

♩ = 82,000038

A jazz guitar staff in treble clef. It features a melodic line of eighth notes with slurs, followed by a chordal ending with a sharp sign (#) and a double bar line.

Kora

A Kora staff in treble clef. It contains sparse melodic notation with a few notes and rests, ending with a double bar line.

E. Bass

An electric bass staff in bass clef. It contains sparse harmonic notation with a few notes and rests, ending with a double bar line.

The Eagles - Love Will Keep Us Alive

Alto Flute

♩ = 98,999939

7

12

17

22

27

32

37

42

47

52

8

Panpipes

The Eagles - Love Will Keep Us Alive

♩ = 98,999939

35

39

44

52

64

69

85

90

94

♩ = 82,000038

The Eagles - Love Will Keep Us Alive

Percussion

♩ = 98,999939

5

9

13

17

21

25

29

33

37

V.S.

Percussion

41



45



49



53



57



61



65



69



73



77



81

Musical notation for measure 81, featuring a series of eighth notes and rests on a five-line staff.

85

Musical notation for measure 85, featuring a series of eighth notes and rests on a five-line staff.

89

Musical notation for measure 89, featuring a series of eighth notes and rests on a five-line staff.

93

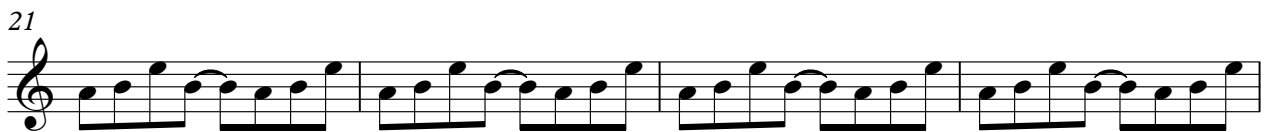
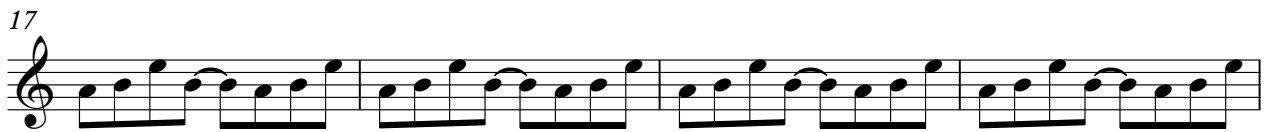
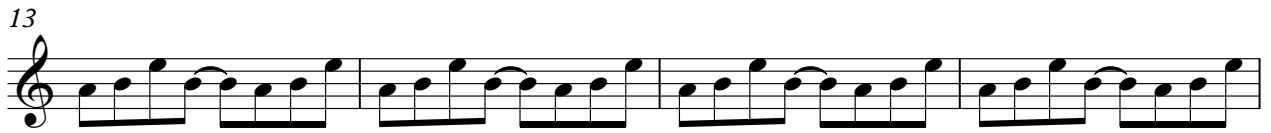
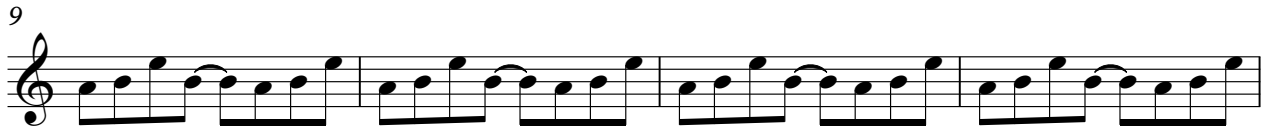
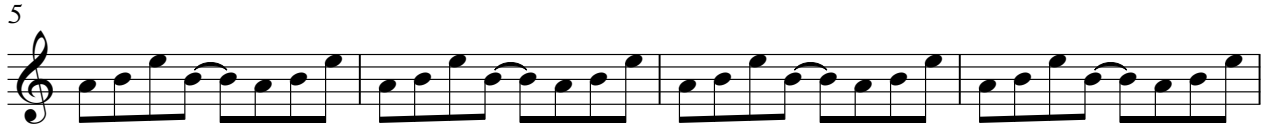
Musical notation for measure 93, featuring a series of eighth notes and rests on a five-line staff.

96

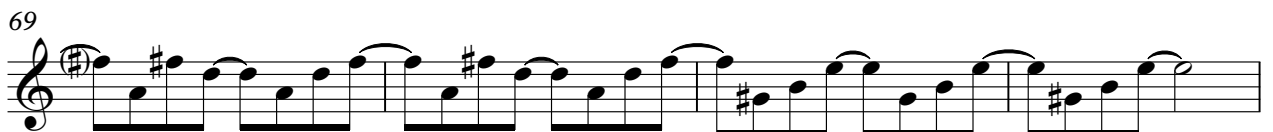
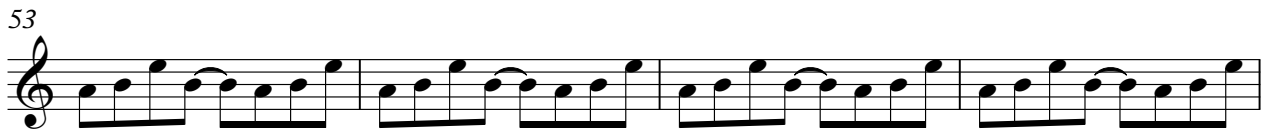
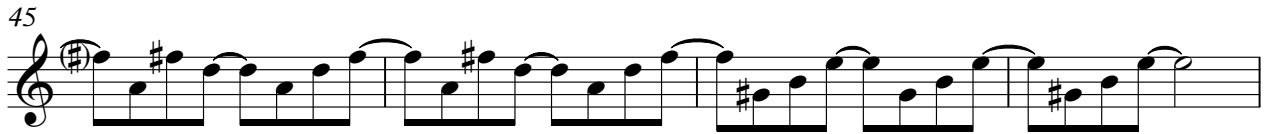
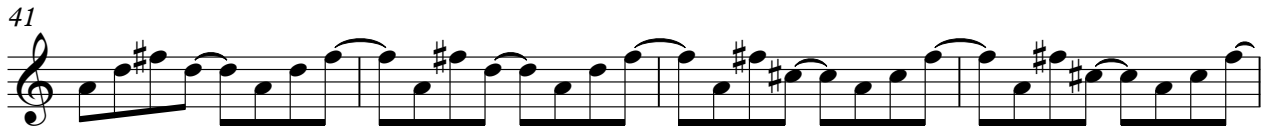
♩ = 82,000038

Musical notation for measure 96, featuring a series of eighth notes and rests on a five-line staff.

♩ = 98,999939



V.S.



81



85



89



93



96

♩ = 82,000038



The Eagles - Love Will Keep Us Alive

Kora

♩ = 98,999939

3

7

6

17

14 23

56

62

14

80

6 2

92

3

♩ = 82,000038

♩ = 98,999939



2

Fretless Electric Bass

73



81



88



94

♩ = 82,000038

