

The Police - Roxanne

♩ = 136,000153

Alto Flute

Percussion

Electric Guitar

Electric Guitar

Acoustic Bass

♩ = 136,000153

Percussive Organ

5

Perc.

E. Gtr.

E. Gtr.

A. Bass

7

Perc. E. Gtr. E. Gtr. A. Bass

Detailed description: This system contains measures 7 and 8. The Percussion part features a consistent rhythmic pattern of eighth notes with 'x' marks above them, indicating a specific sound. The two Electric Guitar parts play a series of chords, with a key signature change to one flat (B-flat) at the start of measure 8. The Bass part provides a steady eighth-note accompaniment.

9

Perc. E. Gtr. E. Gtr. A. Bass

Detailed description: This system contains measures 9 and 10. The Percussion part continues with the same eighth-note pattern. The Electric Guitars continue with their chordal accompaniment in the one-flat key signature. The Bass part continues with eighth notes, showing some melodic variation in measure 10.

11

A. Fl. Perc. E. Gtr. E. Gtr. A. Bass

Detailed description: This system contains measures 11 and 12. The Alto Flute part enters in measure 11 with a single note. The Percussion part has a more complex rhythm, including a triplet of eighth notes in measure 12. The Electric Guitars play a more intricate, moving line, and the Bass part continues with a melodic eighth-note line.

14

A. Fl. Perc. E. Gtr. E. Gtr. A. Bass

This musical score covers measures 14 and 15. The Alto Flute (A. Fl.) part begins with a whole rest in measure 14, followed by a melodic line in measure 15. The Percussion (Perc.) part features a consistent rhythmic pattern of eighth notes with 'x' marks above them. The two Electric Guitar (E. Gtr.) parts play a steady accompaniment of eighth-note chords. The Alto Bass (A. Bass) part provides a bass line with eighth notes and chords.

16

A. Fl. Perc. E. Gtr. E. Gtr. A. Bass

This musical score covers measures 16 and 17. The Alto Flute (A. Fl.) part starts with a triplet of eighth notes in measure 16, followed by a whole rest in measure 17. The Percussion (Perc.) part continues with the same eighth-note rhythmic pattern. The two Electric Guitar (E. Gtr.) parts maintain their accompaniment of eighth-note chords. The Alto Bass (A. Bass) part continues with its eighth-note bass line.

18

A. Fl.

Perc.

E. Gtr.

E. Gtr.

A. Bass

20

A. Fl.

Perc.

E. Gtr.

E. Gtr.

A. Bass

23

A. Fl. Perc. E. Gtr. E. Gtr. A. Bass

Detailed description: This musical system covers measures 23 and 24. The flute part (A. Fl.) has a rest in measure 23 and begins in measure 24 with a melodic line featuring two triplet markings. The percussion part (Perc.) consists of a steady eighth-note pattern with 'x' marks above the notes. The two electric guitar parts (E. Gtr.) play a rhythmic accompaniment of eighth notes with chords, including a key signature change to one flat in measure 24. The acoustic bass part (A. Bass) provides a bass line with eighth notes and chords.

25

A. Fl. Perc. E. Gtr. E. Gtr. A. Bass

Detailed description: This musical system covers measures 25 and 26. The flute part (A. Fl.) has a rest in measure 25 and begins in measure 26 with a melodic line featuring a sextuplet marking. The percussion part (Perc.) continues with its eighth-note pattern. The two electric guitar parts (E. Gtr.) maintain their rhythmic accompaniment, with a key signature change to one flat in measure 26. The acoustic bass part (A. Bass) continues with its bass line.

27

A. Fl.

Perc.

E. Gtr.

E. Gtr.

A. Bass

3

6

30

A. Fl.

Perc.

E. Gtr.

E. Gtr.

A. Bass

32

A. Fl.

Perc.

E. Gtr.

E. Gtr.

A. Bass

Detailed description: This musical score block covers measures 32 and 33. The top staff is for the Alto Flute (A. Fl.) in treble clef, showing a melodic line with a long note in measure 33. The Percussion (Perc.) staff uses a snare drum (H) and features a rhythmic pattern of eighth notes with 'x' marks above them. The two Electric Guitar (E. Gtr.) staves are in treble clef, playing a complex, syncopated rhythm with many beamed eighth notes. The Alto Bass (A. Bass) staff is in bass clef, playing a steady eighth-note bass line.

34

A. Fl.

Perc.

E. Gtr.

E. Gtr.

A. Bass

Detailed description: This musical score block covers measures 34 and 35. The A. Fl. staff continues its melodic line. The Perc. staff maintains the eighth-note pattern with 'x' marks. The E. Gtr. staves continue with their complex rhythmic accompaniment. The A. Bass staff continues with its eighth-note bass line. The key signature changes to one flat (B-flat) at the start of measure 35.

36

A. Fl.

Perc.

E. Gtr.

E. Gtr.

A. Bass

Perc. Organ

Detailed description: This system of music covers measures 36, 37, and 38. The A. Fl. part starts with a melodic line in measure 36, followed by a rest in 37, and then a phrase in 38. The Perc. part features a complex rhythmic pattern with many sixteenth notes and rests, including a snare drum symbol in measure 37. The two E. Gtr. parts play a rhythmic accompaniment with chords and single notes. The A. Bass part provides a steady bass line. The Perc. Organ part has a few notes in measure 37 and a long, sustained chord in measure 38.

39

A. Fl.

Perc.

E. Gtr.

E. Gtr.

A. Bass

Perc. Organ

Detailed description: This system of music covers measures 39, 40, and 41. The A. Fl. part has a rest in measure 39, a phrase in 40, and a rest in 41. The Perc. part continues with a rhythmic pattern of eighth and sixteenth notes. The two E. Gtr. parts play a rhythmic accompaniment with chords and single notes. The A. Bass part provides a steady bass line. The Perc. Organ part has a few notes in measure 39 and a long, sustained chord in measure 40.

42

A. Fl.

Perc.

E. Gtr.

E. Gtr.

A. Bass

Perc. Organ

Detailed description: This system covers measures 42, 43, and 44. The A. Fl. part has a melodic line with some rests and a double bar line in measure 43. The Perc. part features a steady eighth-note pattern with occasional accents. The two E. Gtr. parts play a rhythmic accompaniment with some melodic movement. The A. Bass part provides a steady bass line. The Perc. Organ part has sustained chords with some melodic movement.

45

A. Fl.

Perc.

E. Gtr.

E. Gtr.

A. Bass

Perc. Organ

Detailed description: This system covers measures 45, 46, and 47. The A. Fl. part has a melodic line with some rests and a double bar line in measure 45. The Perc. part features a steady eighth-note pattern with occasional accents. The two E. Gtr. parts play a rhythmic accompaniment with some melodic movement. The A. Bass part provides a steady bass line. The Perc. Organ part has sustained chords with some melodic movement.

48

Perc.

E. Gtr.

E. Gtr.

A. Bass

51

A. Fl.

Perc.

E. Gtr.

E. Gtr.

A. Bass

54

A. Fl.

Perc.

E. Gtr.

E. Gtr.

A. Bass

Detailed description: This block contains the musical notation for measures 54 and 55. It features five staves: A. Fl. (Alto Flute), Perc. (Percussion), and two E. Gtr. (Electric Guitar) staves, and one A. Bass (Alto Bass) staff. The A. Fl. staff shows a melodic line with eighth and quarter notes. The Perc. staff has a rhythmic pattern of eighth notes with 'x' marks above them. The two E. Gtr. staves play a consistent chordal accompaniment with eighth notes. The A. Bass staff provides a bass line with eighth notes.

56

A. Fl.

Perc.

E. Gtr.

E. Gtr.

A. Bass

Detailed description: This block contains the musical notation for measures 56 and 57. It features five staves: A. Fl. (Alto Flute), Perc. (Percussion), and two E. Gtr. (Electric Guitar) staves, and one A. Bass (Alto Bass) staff. The A. Fl. staff shows a melodic line with eighth and quarter notes, including a triplet of eighth notes in measure 57. The Perc. staff has a rhythmic pattern of eighth notes with 'x' marks above them. The two E. Gtr. staves play a consistent chordal accompaniment with eighth notes. The A. Bass staff provides a bass line with eighth notes.

58

A. Fl.

Perc.

E. Gtr.

E. Gtr.

A. Bass

60

A. Fl.

Perc.

E. Gtr.

E. Gtr.

A. Bass

63

A. Fl.

Perc.

E. Gtr.

E. Gtr.

A. Bass

Detailed description: This musical score block covers measures 63 and 64. It features five staves: A. Fl. (Alto Flute), Perc. (Percussion), and two E. Gtr. (Electric Guitar) staves, and A. Bass (Alto Bass). The A. Fl. staff uses a bass clef and a key signature of one flat. The Perc. staff uses a drum set notation with 'x' marks for cymbals and vertical lines for other drums. The two E. Gtr. staves use a treble clef and a key signature of one flat, with a 'b' symbol indicating a key change or a specific voicing. The A. Bass staff uses a bass clef and a key signature of one flat. The music consists of rhythmic patterns and melodic lines across these instruments.

65

A. Fl.

Perc.

E. Gtr.

E. Gtr.

A. Bass

Detailed description: This musical score block covers measures 65 and 66. It features five staves: A. Fl. (Alto Flute), Perc. (Percussion), and two E. Gtr. (Electric Guitar) staves, and A. Bass (Alto Bass). The A. Fl. staff uses a bass clef and a key signature of one flat. The Perc. staff uses a drum set notation with 'x' marks for cymbals and vertical lines for other drums. The two E. Gtr. staves use a treble clef and a key signature of one flat, with a 'b' symbol indicating a key change or a specific voicing. The A. Bass staff uses a bass clef and a key signature of one flat. The music consists of rhythmic patterns and melodic lines across these instruments.

67

A. Fl.

Perc.

E. Gtr.

E. Gtr.

A. Bass

Detailed description: This block contains the musical notation for measures 67 through 70. It features five staves: A. Fl. (Alto Flute), Perc. (Percussion), and two E. Gtr. (Electric Guitar) staves, and one A. Bass (Bass) staff. The key signature has one flat (B-flat). The A. Fl. staff shows a melodic line with eighth and quarter notes. The Perc. staff has a rhythmic pattern of eighth notes with 'x' marks above them. The two E. Gtr. staves show a complex rhythmic pattern with many beamed eighth notes and some sustained chords. The A. Bass staff has a steady eighth-note bass line.

70

A. Fl.

Perc.

E. Gtr.

E. Gtr.

A. Bass

Detailed description: This block contains the musical notation for measures 70 through 73. It features the same five staves as the previous block. The A. Fl. staff continues its melodic line. The Perc. staff maintains its rhythmic pattern. The two E. Gtr. staves continue with their complex rhythmic patterns. The A. Bass staff continues with its eighth-note bass line.

72

A. Fl.
Perc.
E. Gtr.
E. Gtr.
A. Bass

Detailed description: This musical score covers measures 72 and 73. The Alto Flute (A. Fl.) part in measure 72 consists of a sequence of eighth notes: G4, A4, Bb4, C5, Bb4, A4, G4. In measure 73, it has a whole rest followed by a dotted half note G4. The Percussion (Perc.) part features a steady eighth-note pattern of 'x' marks in measure 72, and a similar pattern in measure 73 with a half note G4. The two Electric Guitar (E. Gtr.) parts play a rhythmic accompaniment of eighth notes with a slash and a tilde symbol (e.g., G4/Bb4, F4/Eb4). The Acoustic Bass (A. Bass) part plays a steady eighth-note line: G2, A2, Bb2, C3, Bb2, A2, G2.

74

A. Fl.
Perc.
E. Gtr.
E. Gtr.
A. Bass

Detailed description: This musical score covers measures 74 and 75. The Alto Flute (A. Fl.) part in measure 74 has a quarter note G4, a quarter rest, and a quarter note A4. In measure 75, it has a quarter rest, a quarter note Bb4, a quarter note C5, and a quarter note Bb4. The Percussion (Perc.) part continues with eighth-note 'x' marks in measure 74, and in measure 75, it has eighth-note 'x' marks followed by a half note G4. The two Electric Guitar (E. Gtr.) parts continue with their eighth-note accompaniment. The Acoustic Bass (A. Bass) part continues with its eighth-note line: G2, A2, Bb2, C3, Bb2, A2, G2.

76

A. Fl.

Perc.

E. Gtr.

E. Gtr.

A. Bass

Perc. Organ

Detailed description: This system of music covers measures 76, 77, and 78. The A. Fl. part begins in measure 76 with a melodic line, followed by a rest in measure 77, and then a melodic phrase in measure 78. The Perc. part features a complex rhythmic pattern with eighth and sixteenth notes, including a double bar line in measure 77. The two E. Gtr. parts play a rhythmic accompaniment with chords and single notes. The A. Bass part provides a steady bass line. The Perc. Organ part has a few notes in measure 78, including a sustained chord.

79

A. Fl.

Perc.

E. Gtr.

E. Gtr.

A. Bass

Perc. Organ

Detailed description: This system of music covers measures 79, 80, and 81. The A. Fl. part has a rest in measure 79, followed by a melodic phrase in measure 80, and another rest in measure 81. The Perc. part continues with a rhythmic pattern, featuring a double bar line in measure 80. The two E. Gtr. parts play a rhythmic accompaniment with chords and single notes. The A. Bass part provides a steady bass line. The Perc. Organ part has a few notes in measure 81, including a sustained chord.

82

A. Fl.

Perc.

E. Gtr.

E. Gtr.

A. Bass

Perc. Organ

Detailed description: This block contains the musical notation for measures 82, 83, and 84. The A. Fl. part features a melodic line with some rests and a double bar line in measure 83. The Perc. part shows a steady eighth-note pattern with occasional rests. The two E. Gtr. parts play a rhythmic accompaniment with chords and single notes. The A. Bass part provides a bass line with eighth notes and some rests. The Perc. Organ part consists of sustained chords and single notes.

85

A. Fl.

Perc.

E. Gtr.

E. Gtr.

A. Bass

Perc. Organ

Detailed description: This block contains the musical notation for measures 85, 86, and 87. The A. Fl. part has a melodic line with rests in measures 85 and 87. The Perc. part continues with a steady eighth-note pattern. The two E. Gtr. parts play a rhythmic accompaniment with chords and single notes. The A. Bass part provides a bass line with eighth notes and some rests. The Perc. Organ part consists of sustained chords and single notes.

88

A. Fl.

Perc.

E. Gtr.

E. Gtr.

A. Bass

Perc. Organ

Detailed description: This block contains the musical notation for measures 88, 89, and 90. The A. Fl. part features a melodic line with slurs and accents, and rests in measures 88 and 90. The Perc. part consists of a steady eighth-note pattern with occasional 'x' marks. The two E. Gtr. parts play a rhythmic accompaniment with chords and single notes. The A. Bass part provides a bass line with eighth notes and rests. The Perc. Organ part features sustained chords with some melodic movement.

91

A. Fl.

Perc.

E. Gtr.

E. Gtr.

A. Bass

Perc. Organ

Detailed description: This block contains the musical notation for measures 91, 92, and 93. The A. Fl. part has a melodic line with slurs and accents, and rests in measures 91 and 93. The Perc. part continues with its eighth-note pattern. The two E. Gtr. parts maintain their rhythmic accompaniment. The A. Bass part continues with its bass line. The Perc. Organ part features sustained chords with some melodic movement.

94

A. Fl.

Perc.

E. Gtr.

E. Gtr.

A. Bass

Perc. Organ

Detailed description: This system of music covers measures 94, 95, and 96. The A. Fl. part has a melodic line with some rests. The Perc. part features a steady eighth-note pattern with occasional accents. The two E. Gtr. parts play a rhythmic accompaniment with chords and single notes. The A. Bass part provides a bass line with eighth notes and some rests. The Perc. Organ part has sustained chords and some melodic movement.

97

A. Fl.

Perc.

E. Gtr.

E. Gtr.

A. Bass

Perc. Organ

Detailed description: This system of music covers measures 97, 98, and 99. The A. Fl. part has a more active melodic line with some grace notes. The Perc. part continues with a steady eighth-note pattern. The two E. Gtr. parts maintain their rhythmic accompaniment. The A. Bass part continues with a bass line. The Perc. Organ part has sustained chords and some melodic movement.

100

A. Fl.

Perc.

E. Gtr.

E. Gtr.

A. Bass

Perc. Organ

103

A. Fl.

Perc.

E. Gtr.

E. Gtr.

A. Bass

Perc. Organ

106

A. Fl.

Perc.

E. Gtr.

E. Gtr.

A. Bass

Perc. Organ

Detailed description: This system of music covers measures 106, 107, and 108. The Alto Flute (A. Fl.) part features a melodic line with a flat key signature and rests in measures 106 and 108. The Percussion (Perc.) part consists of a steady eighth-note pattern with 'x' marks above the notes. The two Electric Guitar (E. Gtr.) parts play a rhythmic accompaniment of eighth notes, with some notes marked with a '7' for a slide effect. The Acoustic Bass (A. Bass) part provides a bass line with eighth notes and a flat key signature. The Percussion Organ part features sustained chords with a flat key signature, marked with a '7' for a slide effect.

109

A. Fl.

Perc.

E. Gtr.

E. Gtr.

A. Bass

Perc. Organ

Detailed description: This system of music covers measures 109, 110, and 111. The Alto Flute (A. Fl.) part has a melodic line with a flat key signature and rests in measures 109 and 111. The Percussion (Perc.) part continues with the eighth-note pattern. The two Electric Guitar (E. Gtr.) parts play eighth notes with a flat key signature and slide effects. The Acoustic Bass (A. Bass) part continues the bass line with eighth notes and a flat key signature. The Percussion Organ part features sustained chords with a flat key signature and slide effects.

Alto Flute

The Police - Roxanne

♩ = 136,000153

12

17

22

27

32

38

43

6

53



58



62



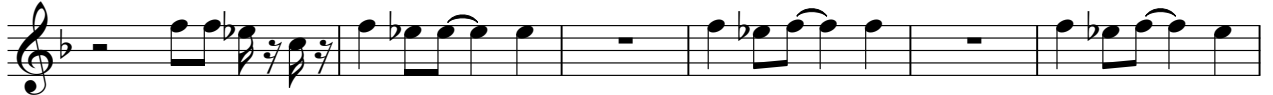
67



72



77



83



90



96



101



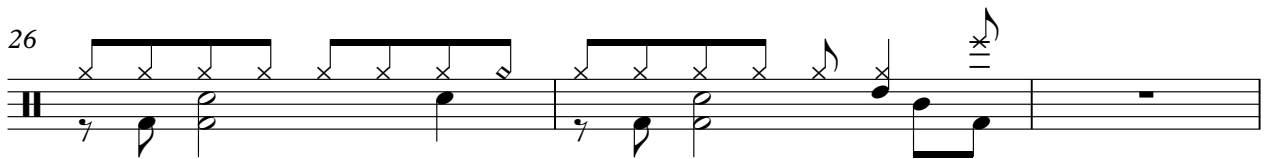
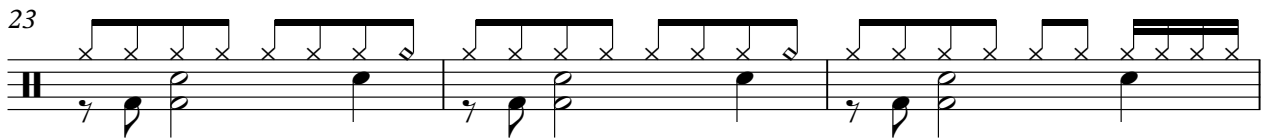
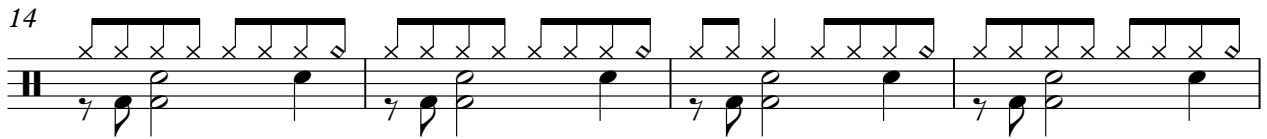
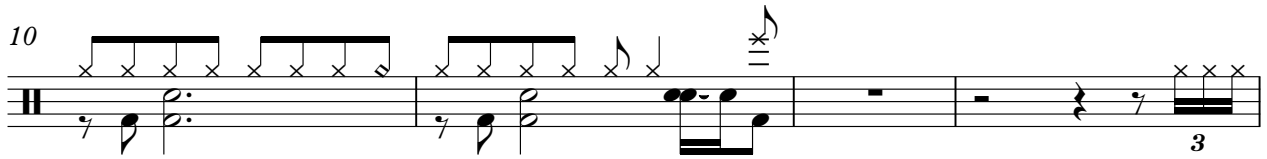
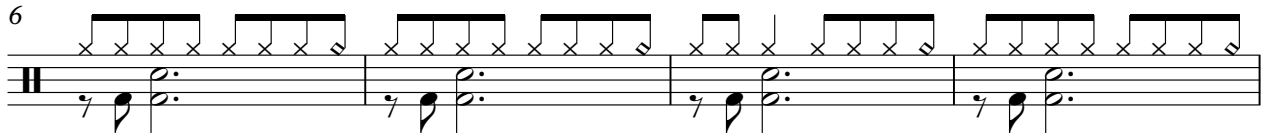
106



The Police - Roxanne

Percussion

♩ = 136,000153



Percussion

29

33

37

41

45

49

53

57

62

66

Percussion

3

71

Musical notation for measure 71, featuring a drum staff with a 7/8 time signature and a guitar staff with chords and eighth notes.

75

Musical notation for measure 75, featuring a drum staff with a 7/8 time signature and a guitar staff with chords and eighth notes.

79

Musical notation for measure 79, featuring a drum staff with a 7/8 time signature and a guitar staff with chords and eighth notes.

83

Musical notation for measure 83, featuring a drum staff with a 7/8 time signature and a guitar staff with chords and eighth notes.

87

Musical notation for measure 87, featuring a drum staff with a 7/8 time signature and a guitar staff with chords and eighth notes.

91

Musical notation for measure 91, featuring a drum staff with a 7/8 time signature and a guitar staff with chords and eighth notes.

95

Musical notation for measure 95, featuring a drum staff with a 7/8 time signature and a guitar staff with chords and eighth notes.

99

Musical notation for measure 99, featuring a drum staff with a 7/8 time signature and a guitar staff with chords and eighth notes.

103

Musical notation for measure 103, featuring a drum staff with a 7/8 time signature and a guitar staff with chords and eighth notes.

107

Musical notation for measure 107, featuring a drum staff with a 7/8 time signature and a guitar staff with chords and eighth notes.

V.S.

4

Percussion

110

Musical notation for Percussion, measure 110. The staff shows a sequence of notes with stems and beams, and a series of 'x' marks above the staff indicating percussive hits. The notation is organized into four measures, each containing two notes with stems and beams, and two 'x' marks above the staff. The first three measures have 'x' marks above the first and second notes, while the fourth measure has 'x' marks above the first, second, and third notes.

Electric Guitar

The Police - Roxanne

♩ = 136,000153

3

6

9

12

16

19

23

26

66

70

73

76

80

84

88

92

96

100

V.S.

104



108



The Police - Roxanne

Electric Guitar

♩ = 136,000153

3

6

9

12

16

19

23

26

30

33

V.S.

36



40



44



49



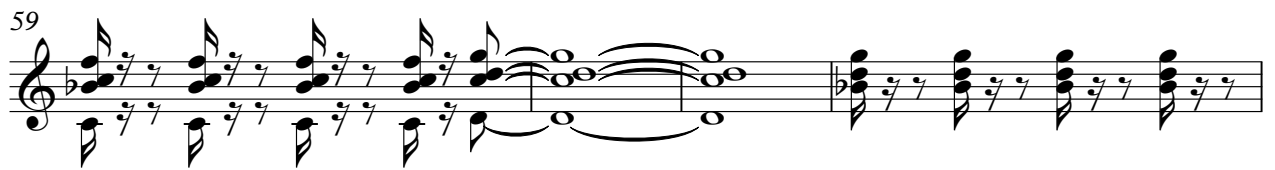
53



56



59



63



66



70



73



76



80



84



88



92



96



100



104



108



The Police - Roxanne

Acoustic Bass

♩ = 136,000153

5



8



11



15



18



22



25



28



32



34



V.S.

37



41



45



50



54



57



60



64



67



71



73



75



79



83



87



91



95



99



103



107



V.S.

109



Percussive Organ

The Police - Roxanne

♩ = 136,000153

36

41

47 29

80

86

92

98

104

108