

Jimi Hendrix - Foxey lady

♩ = 93,999985

Drums

Feedback

Lead Guitar

Bass



Drums

Cymbals

Feedback

Lead Guitar

Bass

7

Drums

Cymbals

Lead Guitar

Bass



9

Drums

Cymbals

Lead Guitar

Bass



11

Drums

Cymbals

Lead Guitar

Bass

13

Drums

Cymbals

Vocals

Lead Guitar

Bass



15

Drums

Cymbals

Lead Guitar

Bass

Whisper

17

Drums

Cymbals

Vocals

Lead Guitar

Bass

Lead Guitar TAB:

T	5	5	5	5	5	0
A	4	4	4	4	4	0
B	2	2				2 2

Lead Guitar TAB (continued):

T	5	0				
A	4					0 1 2 3 4
B						



19

Drums

Cymbals

Vocals

Lead Guitar

Bass

Whisper

Lead Guitar TAB:

T	5	5	5	0	2	2	2	2	2	0
A	4	4	4	4	2	4				2
B	2			4	2					

21

Drums

Cymbals

Vocals

Lead Guitar

Bass



23

Drums

Cymbals

Vocals

Lead Guitar

Bass

25

Drums

Cymbals

Vocals

Lead Guitar

Bass

T	5	0	5	5	5	5	5	5	0	2	4	4	4	2
A	4	4	4	4	4	4	4	4	2	2	2	2	4	2
B	2	2	2	2	2	2	2	0	0	4	2	0	2	0



27

Drums

Vocals

Feedback

Lead Guitar

Bass

Whisper

T	14	16	9	5	11	11	11	5	2	2
A	4	4								
B	2									

29

Drums

Cymbals

Lead Guitar

Bass

Lead Guitar Tablature (Measures 29-30):

Measure	T	A	B
29	5	4	2
30	5	4	2



31

Drums

Cymbals

Lead Guitar

Bass

Lead Guitar Tablature (Measures 31-32):

Measure	T	A	B
31	5	4	2
32	5	4	2

33

Drums

Cymbals

Feedback

Lead Guitar

TAB

B

Bass



35

Drums

Cymbals

Lead Guitar

TAB

B

Bass

37

Drums

Cymbals

Vocals

Lead Guitar

Bass

Lead Guitar TAB for measures 37-38:

T	5	5	5	5	5
A	4	4	4	4	4
B	2	2	2	2	2

Lead Guitar TAB for measures 39-40:

T	4	4	4	0	1	2	2	2
A	4	4	4	0	1	2	3	4
B	2	2	2	0	1	2	3	4



39

Drums

Cymbals

Vocals

Lead Guitar

Bass

Whisper

Lead Guitar TAB for measures 39-40:

T	0	5	5	5	5	5	5	0	1	2
A	4	2	4	4	4	2	4	4	4	0
B	2	2	2	2	2	2	0	0	2	3

41

Drums

Cymbals

Vocals

Lead Guitar

Bass

Detailed description: This musical score block covers measures 41 to 45. It features five staves: Drums, Cymbals, Vocals, Lead Guitar, and Bass. The key signature is three sharps (F#, C#, G#) and the time signature is 7/8. The Drums staff shows a pattern of eighth notes and quarter notes. The Cymbals staff has asterisks indicating cymbal hits. The Vocals staff has a treble clef and a few notes. The Lead Guitar staff has three staves labeled T, A, and B, with fret numbers 0, 2, 6, 5, 0, 4, 4, 5, 6, 6. The Bass staff has a bass clef and a few notes.



42

Drums

Cymbals

Vocals

Lead Guitar

Bass

Detailed description: This musical score block covers measures 46 to 50. It features five staves: Drums, Cymbals, Vocals, Lead Guitar, and Bass. The key signature is three sharps (F#, C#, G#) and the time signature is 7/8. The Drums staff shows a pattern of eighth notes and quarter notes with a '6' under a group of six notes. The Cymbals staff has asterisks indicating cymbal hits. The Vocals staff has a treble clef and a few notes. The Lead Guitar staff has three staves labeled T, A, and B, with fret numbers 4, 2, 2, 5, 0, 0, 1, 2, 3, 4. The Bass staff has a bass clef and a few notes.

43

Drums

Cymbals

Vocals

Lead Guitar

Bass

Detailed description: This system covers measures 43 and 44. The drums play a steady eighth-note pattern. Cymbals are used for accents and a crash at the start of measure 44. The vocal line has a melodic phrase in measure 43 and a rest in measure 44. The lead guitar part includes a treble clef and tablature for strings A and B. The bass line provides a rhythmic accompaniment.



45

Drums

Cymbals

Vocals

Lead Guitar

Bass

Detailed description: This system covers measures 45 and 46. The drums continue with eighth notes. Cymbals provide accents. The vocal line features a melodic phrase in measure 45 and a rest in measure 46. The lead guitar part includes a treble clef and tablature for strings A and B. The bass line continues with eighth notes.

47

Drums

Cymbals

Vocals

Lead Guitar

TAB

Bass



49 ♩ = 94,9999200000

Drums

Cymbals

Vocals

Lead Guitar

TAB

Bass

51

Drums

Vocals

Lead Guitar

Bass

Whisper



53

Drums

Cymbals

Lead Guitar

Bass

55

Drums

Cymbals

Lead Guitar

Bass

2 0 2 3 4 2 0 2 0 0 9 9 14 12



57

$\text{♩} = 97,999985$

Drums

Cymbals

Lead Guitar

Bass

13 14 14 13 14 14 14 17 19 20 21 21 17 14 17 14 12 12 14 14 9 17 14 9 14 17 14 9



59

Drums

Cymbals

Lead Guitar

Bass

14 14 17 12 14 17 14 14 17 18 14 17 14 9 12 14 14 19 19 17 17

60 ♩ = 96,000000 ♩ = 97,999985 ♩ = 96,000000

Drums

Lead Guitar

Bass



61 ♩ = 97,999985 ♩ = 96,000000

Drums

Cymbals

Lead Guitar

Bass



62

Drums

Cymbals

Lead Guitar

Bass

63

Drums

Cymbals

Lead Guitar

Bass



64

Drums

Lead Guitar

Bass



65

Drums

Cymbals

Lead Guitar

Bass

67

Drums

Cymbals

Lead Guitar

Bass



69

Drums

Cymbals

Lead Guitar

Bass



71

Drums

Cymbals

Lead Guitar

Bass

73

Drums

Cymbals

Lead Guitar

Bass



75

Drums

Cymbals

Lead Guitar

Bass



76

Drums

Feedback

Lead Guitar

Bass

77

Drums

Cymbals

Lead Guitar

Bass

Detailed description: This block contains the musical notation for measures 77 and 78. It features four staves: Drums, Cymbals, Lead Guitar, and Bass. The Drums staff shows a steady eighth-note pattern. The Cymbals staff has 'x' marks for cymbal hits. The Lead Guitar staff includes a treble clef and a key signature of two sharps (F# and C#), with fret numbers (2, 4, 5) and a string indicator 'T'. The Bass staff is in bass clef with the same key signature, showing a melodic line with some triplets.



79

Drums

Cymbals

Vocals

Lead Guitar

Bass

Detailed description: This block contains the musical notation for measures 79 and 80. It features five staves: Drums, Cymbals, Vocals, Lead Guitar, and Bass. The Drums and Cymbals staves show complex rhythmic patterns with triplets. The Vocals staff has a treble clef and a key signature of two sharps, with a melodic line and a fermata. The Lead Guitar staff includes a treble clef and a key signature of two sharps, with fret numbers (4, 5) and a string indicator 'T'. The Bass staff is in bass clef with the same key signature, showing a melodic line with triplets.

81

Drums

Cymbals

Vocals

Lead Guitar

T 5 5 5 5 5 5 5 5 2 0 2 0 0 2 2 0 0 2 4

A 4 4 4 4 4 4 4 4 2 2 2 2 4

B 2 2 2 2 0 0

Bass



83

Drums

Cymbals

Vocals

Lead Guitar

T 5 5 5 5 5 5 5 5 0 0 0 4 4 4 2

A 4 4 4 4 4 4 4 4 1 1 4 4 4 2

B 2 2 2 2 0 0 0 4 2 2 0 2 2 2 2 0

Bass

85

This musical score covers measures 85 to 88. It features six staves: Drums, Vocals, Feedback, Lead Guitar, Bass, and Whisper. The key signature has three sharps (F#, C#, G#).

- Drums:** Measure 85 has a snare drum and a hi-hat. Measures 86-88 are mostly rests.
- Vocals:** Measure 85 has a vocal line starting with a grace note. A long note with a slur spans measures 86 and 87. Measure 88 has a vocal line with a grace note.
- Feedback:** Measures 86-88 contain vertical lines representing feedback.
- Lead Guitar:** Tablature for strings T, A, and B. Measure 85: T (4), A (4), B (2). Measure 86: T (2), A (7), B (2). Measure 87: T (2), A (2), B (2). Measure 88: T (2), A (2), B (2).
- Bass:** Measure 85 has a bass note. Measures 86-88 are rests.
- Whisper:** Measure 85 has a whisper line with a grace note. Measures 86-88 have a rhythmic pattern of notes.



89

This musical score covers measures 89 to 92. It features six staves: Drums, Cymbals, Feedback, Lead Guitar, Bass, and Whisper. The key signature has three sharps (F#, C#, G#).

- Drums:** Measure 89 has a snare drum. Measure 90 has a snare drum and a hi-hat. Measures 91-92 have a snare drum and a hi-hat.
- Cymbals:** Measure 90 has a cymbal. Measures 91-92 have a cymbal.
- Feedback:** Measure 89 has a feedback line with a vertical line. Measures 90-92 are rests.
- Lead Guitar:** Tablature for strings T, A, and B. Measure 89: T (2), A (0), B (2). Measure 90: T (5), A (5), B (2). Measure 91: T (5), A (4), B (2). Measure 92: T (5), A (4), B (4).
- Bass:** Measure 89 has a bass note. Measure 90 has a bass note. Measures 91-92 have a rhythmic pattern of notes.
- Whisper:** Measure 89 has a whisper line with a grace note. Measures 90-92 have a rhythmic pattern of notes.

91

Drums

Cymbals

Lead Guitar

Bass



93

Drums

Cymbals

Lead Guitar

Bass



95

Drums

Cymbals

Lead Guitar

Bass

97

Drums

Cymbals

Lead Guitar

Harmonics

Bass

Mic stand fret noise

99

Lead Guitar

Harmonics

Bass

Mic stand fret noise

$\text{♩} = 98,999939$

101

Lead Guitar

Bass

$\text{♩} = 101,000069$ $\text{♩} = 94,999992$ $\text{♩} = 100,000000$

102

Lead Guitar



103

♩ = 103,000046

Lead Guitar



105

Feedback

Lead Guitar



107

Drums

Feedback

Lead Guitar

Bass

Jimi Hendrix - Foxy lady

Drums

♩ = 93,999985

3

7

10

13

16

19

22

25

28

31

V.S.

34

37

40

43

46

49 ♩ = 94,999992 = 96,000000

52

54

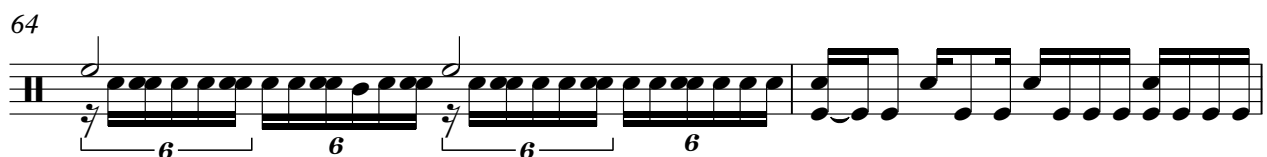
57 ♩ = 97,999985

60 ♩ = 96,000000 ♩ = 97,999985 ♩ = 96,000000 ♩ = 97,999985 ♩ = 96,000000

62



64



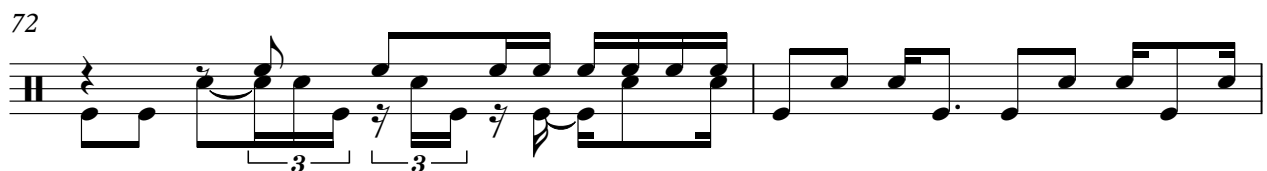
66



69



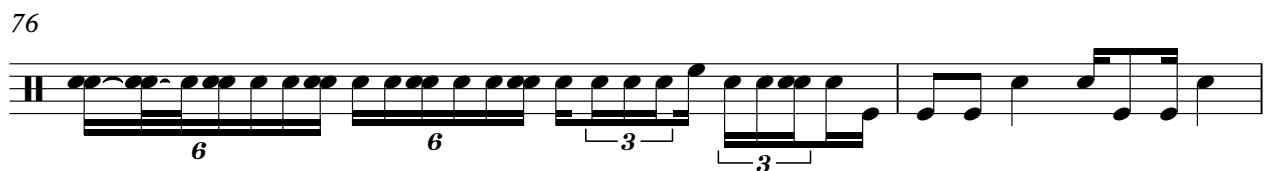
72



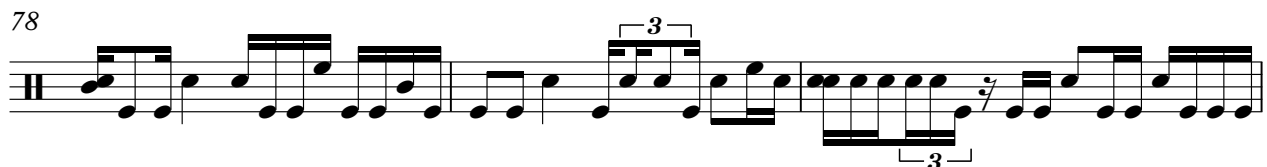
74



76



78



81



84



89

Musical notation for measure 89, featuring a drum staff with a complex rhythmic pattern. The notation includes a sixteenth-note triplet (labeled '6'), followed by eighth notes, and a sixteenth-note triplet (labeled '3').

92

Musical notation for measure 92, featuring a drum staff with a complex rhythmic pattern. The notation includes eighth-note triplets (labeled '3') and sixteenth-note triplets (labeled '3').

95

Musical notation for measure 95, featuring a drum staff with a complex rhythmic pattern. The notation includes eighth-note triplets (labeled '3') and sixteenth-note triplets (labeled '3').

97

♩ = 98,999939

Musical notation for measure 97, featuring a drum staff with a complex rhythmic pattern. The notation includes a sixteenth-note triplet (labeled '6') and a sixteenth-note triplet (labeled '6').

101 ♩ = 101,94000000 ♩ = 100,000000 ♩ = 103,000046

Musical notation for measure 101, featuring a drum staff with a complex rhythmic pattern. The notation includes eighth-note triplets (labeled '3') and sixteenth-note triplets (labeled '3').

Jimi Hendrix - Foxy lady

Cymbals

♩ = 93,999985

4

9

14

18

22

27

2

33

38

43

48

♩ = 94,9999000000

2

Cymbals

53



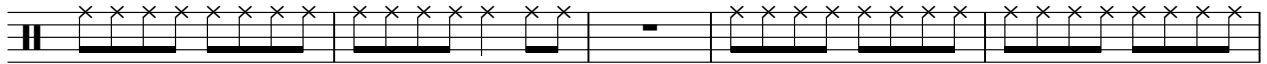
57

♩ = 97,999985

♩ = 96,999985 ♩ = 97,999985



62



67



70



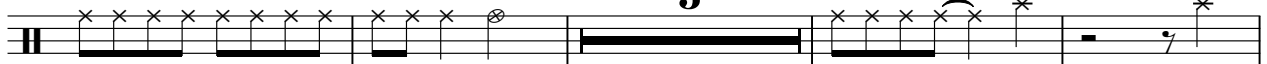
74



79



83



92



97

♩ = 98,999939

♩ = 94,999939

♩ = 103,000046



Jimi Hendrix - Foxey lady

Vocals

♩ = 93,999985

12

17

21

26

38

42

45

♩ = 94,9999200

49

6

2

♩ = 97,99990000500

61

18

3

83

2

2

Vocals

88

♪ = 98,999939 ♪ = 99,999999 ♪ = 103,000046

11 **3** **5**

Jimi Hendrix - Foxy lady

Feedback

♩ = 93,999985

21

27

5

35

♩ = 94,99990200000 ♩ = 97,9998700008500 ♩ = 97,99985000000

14 9 2 15

76

9

90

♩ = 98,999939 ♩ = 101,00015999992 ♩ = 100,000000

10 3

104

♩ = 103,000046

2

Jimi Hendrix - Foxey lady

Lead Guitar

♩ = 93,99985

E				5 5	5	5
B	0	0	0	5 5	5	5
G			0			
D	4	4	4	4 2 4	4 4 2	4
A						0 0 1 2 3 4
E				2 2		2 2

7

E	5 5	5	5	0 1 2	1 1	0 1 0 1 0 0 2 0 0
B	5 5	5	5	0 1 2	0 1	0 1 0 1 0 0 2 0 0
G						
D	4 2 4	4 2	4	2 3 4	2 2	2 2 4
A						
E	2 2	2 2	2 2	0 1 2 3 4		

11

E	5 5	5	0 0 0 0 0	5 5	5	5 0
B	5 5	5	2 2 2 2 2	5 5	5	5 0
G						
D	4 4 4 4 2	4	2 2 4 4 4 4	4 4 4 4	4	0 1 2 3 4
A						
E	2 2 2	2 2 2	2 2 2	2 2	2 2	

15

E	5 5	5	5 5 0 0 0 0	5 5	5	5 0
B	5 5	5	5 5 2 2 2 2	5 5	5	5 0
G						
D	4 4 4 4 2	4	4 4 4 4	4 4 4 4	4	0 1 2 3 4
A						
E	2 2 2	2	2 2	2 2	2 2	

19

E	5	5	5 0 2	0	1	1
B	5	5	5 0 2 2 2 2 2 2 0	0	1	1
G						
D	4 4 4 4 2	4	4 4 4 4 3	2 4 4 4 4	2 2 2 4	4 4
A						
E	2	2	2 2 2 2 1	0	0	0

23

E	5	5	5 0 5	5 5 5 5
B	5	5	5 0 5	5 5 5 5
G				
D	4 4 4 4 4 2 4	4	4 4 4 4 4 4 4	4 4 4 4 4 4 4
A				
E	2 2	2 2	0 0 0 2 0 1 2 0 2 0 2 2 4	2 2 2 2 2

26

E	0	2 4 4 4 2	14	16	9 5	11 11 11 5 2 2	5	5
B	1	2 4 4 4 2					5	5
G								
D	2 2 2	2 4 4 4 2	4				4 0 4 4	4
A	2 2 2	2 0 2 2 2 0	4					
E	0 0	4	2				2 2	

30

E	5 0	5	5 0 0	2 0	0 2 2
B	5 0	5	5 0 0	2 0	0 2 2
G					
D	4	0 2 4	4 0 4 4 4 2 3	4 4	4 4 2 4
A					
E	2 2	3 0 3 0	2 2 2	2	

34

E	2 0 3	3 2 2	0 0	0	5 5 5 0 2 0
B		2			0 5 5 2 2 0 2
G					
D		0 2	4 4	4 2 2	4 4 4
A		0 4 2	4 4	4 2 2	4 4 4
E		4 2 3 2 0	2 2	2	0 0

37

E	5	5	0 5	5	5 5 5	0 1 2
B	5	5	5	5	5 5 5	0 1 2
G						
D	4 4 4 4 4	4 4 4 0 1 2 2 2	4 2 4 4 4 2	4 4 4 0 2 2 3 4	2 2 2 3 4	2 3 4
A		0 1 2 3 4		0 0 2 3 4	0 0 2 3 4	0 1 2
E	2 2	2 2 2	2 2	0 2	0	

V.S.

2 41

Lead Guitar

	0 5 5 0 0	5	5 5	5 5
T	5 5	5	5 5	5 5
A	0 4 4 4	4	4 2 4 4	2 2 4 4 4
B	0 2	2 2	0 0 1 2 3 4	0 2 0 4 0 2 3 4

45

	0 5 5	5 5	0 0	5 0 5	5 5 5
T	5 5	5 5	2 2 3	5 5	5 5 5
A	4 4	4 4 4	2 2 2 2 2	4 4 4 4	4 4 4 4
B	2 2	2 2 2	0 0 0 0 0 0	2 2 2 2 2 2 2 2 2 0 1	2 2 2 2

48

♩ = 94,999900000000

	0 0 0 0 0 0 0 0	5 5 5	5	0 2 2
T	0 0 0 0 3 3 3 3	5 5 5	5	2 2 2 2 2 2 2 2
A	2 3 2 4	4 4 4 4	4	1 1 4 4 2 2
B	2 2	2 2	0 0 0 4	2 2 2 2 0 0

51

	12 5	12 12 12 5 2	12 14	12 14 9 7 9 5	5 2 2 0
T	2		4		2 0 2
A	4				
B	2				

55

	0 2 3 4 2	0 2 0 0	9 9 14 12	13 14 14 13 14 14 14	17 19 20 21
T	2	2			
A					
B	0				

58

♩ = 97,999985

	21 17 14 17 14 12 12 14 14 9 17 14 9 14 17 14 9	14 14 17 12 14 17 14	14 17 18 14 17 14	9 12 14 14
T		19 19 17	17	
A				
B				

60

♩ = 96,000000 ♩ = 97,999985 ♩ = 97,999985 ♩ = 96,000000

	14 12 13 12 14 12 9 7 9 12	9 7 2 5 7 9 12	14 9 8 7	12 9 2 5 7 5 2 5 7 5 2 0 0	0 7 8
T					3
A					0
B					

62

	7 12 12 2 8 12 9 12 9 2 5 19	19	12 14 14 14 14 14 14 17 14 19 14 17
T		21 21	0 17 17
A		0	
B			

64

	19 17 14 17 14 12 14 17 19 17 14 17 14 12	13	13 14 13 14 13 14	13 14 12 12 14 12 9 9 12 12 7 9
T				
A				
B				

67

	5 2 5 2 0	2 2 0	0 2 5 9 9 14 14 17 19 20	20	19 17 14
T		2 2	14		
A		0			
B		0			

T		2 2 2 0	
A	2 2 2 2 3 3 3 3 3 3 3 3	4 4	2 2 2 3 3 3 3 3 3 4
B	0 0 0 0 1 1 1 1 1 1 1 1	2 2	0 0 0 0 4 0 1 1 1 1 1 1 2

73

T	0 2 2 0	1 0 0 0 0 0 1 0	0 1 1 1	1 3 1 0	2 0
A	4	4		4 2	4 3 0
B	2				7 2

76

T	2 0	2 1 1 2 0	5 5 5 5	5 5
A		2 4	2 4 4 4 4 4 4 4	4 4 4 4 2 4 2
B	4		2 2	2 2 2 0 2 4 0 1

79

T	5 5 5 5	5 5	5 5 5 5	5 5 5 5
A	4 4 4 4 4	1 2 2 2 3 4	4 4 4 4 4 4 4	4 4 4 4
B	2 2 2 2 2 2	0 0 0 4	2 2	2 2

82

T	2 0 0 0 2 2 0 0	5 5 5 5 5 5	0 0 0 4 4 4 2
A	2 2 2 4	4 4 4 4 4 4 4	1 1 4 4 4 2
B	0 0	2 2 2 2	2 2 0 2 2 2 0

85

T		2 7	2	2 2 2	2	5 5 5
A	4	4			0	4 4 4 4 4 2 4
B	2					2 2

91

T	5 0 2	5 5 5	5 0 0 2 2 0	0 5 5
A	4 0 4 4	4 4 4 4 4	4 0 4	4 4 4 4 3 4
B	2 2 1 6 7	2 2	2 2	2 2

95

T	5 5 0 14	5 5	5 5 5 4 9 8	6 7
A	4 4 1 0 4	4 2 4 4 4	4 4 4 3 2	6 7 6
B	2 2 2 2	2 2	2 2 2 2	4 4

100 ♪ = 98,999939 ♪ = 101,000069 ♪ = 94,999900,000000

T	0 1 0 0 0 0 0 0 0 0 0 0	0 0 2 0 0 0 0 0 0 0 0 0
A	4 4 2	
B		

102

T	0 0 0 0 0 0 0 0 0 0 1	2 0 0 0 0 0 0 0
A	2 2 2 2 2 2 2 2 2 2	2 2 1 2 2 2
B	7	6 6

V.S.

4 104

♩ = 103,000046 Lead Guitar

T	2	0	0	0					
A	1		2	2 1	4	2	2	4	2
B					4	0	2	4	4

	0	4	2	4	2	4	3	2	0
	2	7	3	2	0	2			
									2 0 0

106

T						2			2
A						2			2
B	2	6	3	3		4			4

						2			2
						2			2
									?

Jimi Hendrix - Foxy lady

Harmonics

♩ = 93,999985 ♩ = 94,99992000000 ♩ = 97,99995000000

48
9
2

61 ♩ = 97,999985 ♩ = 96,000000

37

100 ♩ = 98,999939 ♩ = 101,0000999992 ♩ = 100,000000 ♩ = 103,000046

3
5

Jimi Hendrix - Foxey lady

Bass

♩ = 93,999985



V.S.

44



47

♩ = 94,9999900000



50



54



58

♩ = 97,999985

♩ = 96,00000985

♩ = 96,000000

♩ = 97,999985

♩ = 96,00000



62



66



69



72



75



78



82



86



93



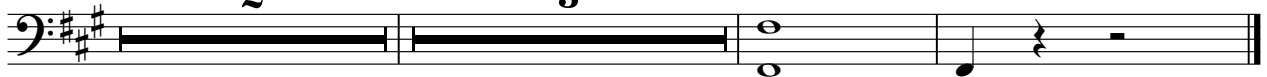
97

♩ = 98,999939 ♩ = 104,999992



102

♩ = 103,000046



Jimi Hendrix - Foxey lady

Whisper

♩ = 93,999985

20

39

♩ = 94,999900

53

♩ = 97,9999500000000000 ♩ = 97,999985 ♩ = 96,000000

86

90

♩ = 98,999939 ♩ = 100,000000 ♩ = 100,000000 ♩ = 103,000046

Mic stand fret noise

Jimi Hendrix - Foxey lady

♩ = 93,999985
4/4

♩ = 94,99992000000
|

♩ = 97,9999500000000000000000
|

♩ = 97,999985

♩ = 96,000000

♩

♩ = 98,999939 ♩ = 101,000000 ♩ = 100,000000 ♩ = 103,000046
||