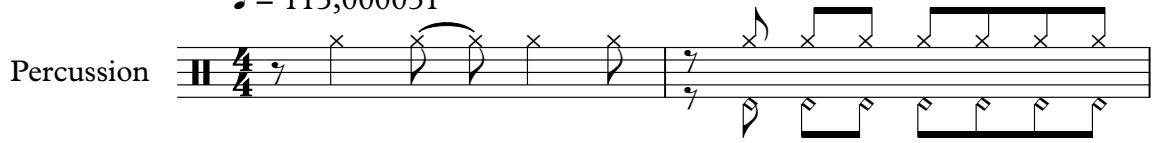


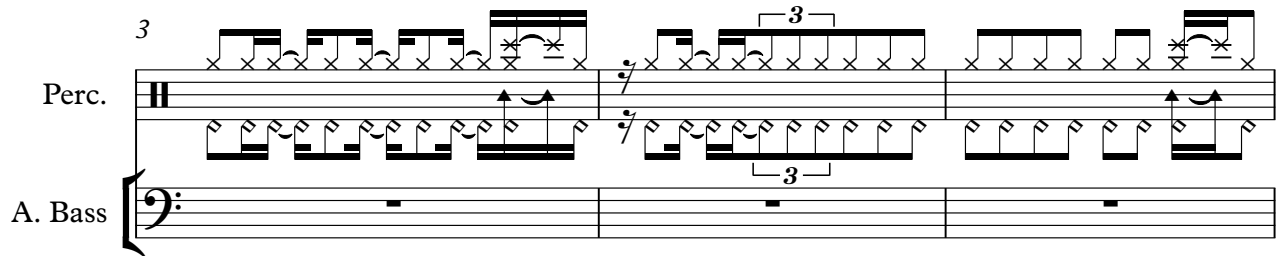
♩ = 115,000031

Percussion



Perc.

A. Bass



6

B. Bottle

Perc.

A. Bass



8

B. Bottle

Perc.

A. Bass



10

B. Bottle

Perc.

A. Bass

U. Bass

12

B. Bottle

Perc.

A. Bass

U. Bass

14

B. Bottle

Perc.

U. Bass

S. Bass

16

B. Bottle

Perc.

U. Bass

18

B. Bottle

Perc.

U. Bass

S. Bass

20

B. Bottle

Perc.

U. Bass

Lead 8

23

B. Bottle

Perc.

U. Bass

S. Bass

Lead 8

Detailed description of the musical score for measures 23-24. The score is written for five instruments: B. Bottle, Perc., U. Bass, S. Bass, and Lead 8. Measure 23: B. Bottle has a quarter note followed by a quarter rest and a quarter note. Perc. has a series of eighth notes with 'x' marks above them, indicating a specific rhythmic pattern. U. Bass has a quarter rest followed by a quarter note. S. Bass has a quarter rest followed by a quarter note. Lead 8 has a whole note chord. Measure 24: B. Bottle has a quarter note, a quarter rest, a quarter note, and a quarter rest. Perc. continues with eighth notes and 'x' marks. U. Bass has a quarter note, a quarter rest, and a quarter note. S. Bass has a quarter note, a quarter rest, and a quarter note. Lead 8 has a whole note chord.

24

B. Bottle

Perc.

U. Bass

Lead 8

Detailed description of the musical score for measures 24-25. The score is written for four instruments: B. Bottle, Perc., U. Bass, and Lead 8. Measure 24: B. Bottle has a quarter note, a quarter rest, a quarter note, and a quarter rest. Perc. continues with eighth notes and 'x' marks. U. Bass has a quarter note, a quarter rest, and a quarter note. Lead 8 has a whole note chord. Measure 25: B. Bottle has a quarter note, a quarter rest, a quarter note, and a quarter rest. Perc. continues with eighth notes and 'x' marks. U. Bass has a quarter note, a quarter rest, and a quarter note. Lead 8 has a whole note chord.

Blown Bottle

♩ = 115,000031

5

The first staff of music is in 4/4 time. It begins with a whole rest. The second measure contains a quarter note G4, a quarter rest, a quarter note G4, and a quarter rest. The third measure contains a quarter note G4, a quarter rest, and a half rest. The fourth measure contains a quarter note G4, a quarter rest, a quarter note G4, and a quarter rest. The fifth measure contains a quarter note G4, a quarter rest, and a half rest.

10

The second staff of music continues the melody. The first measure contains a quarter note G4, a quarter rest, a quarter note G4, and a quarter rest. The second measure contains a quarter note G4, a quarter rest, and a half rest. The third measure contains a quarter note G4, a quarter rest, a quarter note G4, and a quarter rest. The fourth measure contains a quarter note G4, a quarter rest, and a half rest. The fifth measure contains a quarter note G4, a quarter rest, a quarter note G4, and a quarter rest.

15

The third staff of music continues the melody. The first measure contains a quarter note G4, a quarter rest, and a half rest. The second measure contains a quarter note G4, a quarter rest, a quarter note G4, and a quarter rest. The third measure contains a quarter note G4, a quarter rest, and a half rest. The fourth measure contains a quarter note G4, a quarter rest, a quarter note G4, and a quarter rest. The fifth measure contains a quarter note G4, a quarter rest, and a half rest.

20

The fourth staff of music concludes the piece. The first measure contains a quarter note G4, a quarter rest, and a half rest. The second measure contains a whole rest. The third measure contains a quarter note G4, a quarter rest, a quarter note G4, and a quarter rest. The fourth measure contains a quarter note G4, a quarter rest, and a half rest. The fifth measure contains a quarter note G4, a quarter rest, a quarter note G4, and a quarter rest. The sixth measure contains a whole rest, followed by a double bar line.

Percussion

♩ = 115,000031

4

7

10

12

14

16

18

21

24

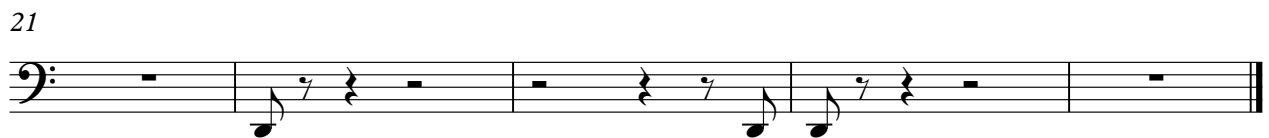
Acoustic Bass

♩ = 115,000031



Upright Bass

♩ = 115,000031



Synth Bass

♩ = 115,000031

14 **3**

14 3

19 **3** **2**

19 3 2

Lead 8 (Bass + Lead)

♩ = 115,000031

21

The musical notation is presented on a single staff with a treble clef and a 4/4 time signature. Above the staff, the tempo is indicated as ♩ = 115,000031. A bolded number '21' is placed above the second measure. The notation is as follows:

- Measure 1: Whole rest.
- Measure 2: Bass line (dotted quarter, eighth), Lead line (quarter, eighth).
- Measure 3: Bass line (dotted quarter, eighth), Lead line (quarter, eighth).
- Measure 4: Bass line (dotted quarter, eighth), Lead line (quarter, eighth).
- Measure 5: Whole rest.
- Measure 6: Whole rest.
- Measure 7: Whole rest.
- Measure 8: Whole rest.