

Video Game Themes - Zelda: Ocarina Of Time

♩ = 73,999985
dave

The image displays a musical score for the 'Zelda: Ocarina Of Time' theme. It consists of ten staves, each with a label on the left: Ocarina, Violoncello, Solo, Oc., Vc., Solo, Oc., Vc., Solo, and Oc. The score is written in 6/4 time and includes various musical notations such as notes, rests, and triplets. The Solo parts are accompanied by guitar tablature. The Ocarina parts are mostly rests, with some notes appearing in the later staves. The Violoncello parts provide a harmonic accompaniment with sustained notes and some rhythmic patterns. The Solo parts feature intricate melodic lines with many beamed notes and triplets. The score is arranged in a vertical stack, with the Ocarina part at the top and the Solo part at the bottom. The Solo part is the most complex, with many notes and a clear melodic line. The Ocarina part is the simplest, with mostly rests. The Violoncello part is in the middle, providing a steady accompaniment. The Solo part is the most prominent, with many notes and a clear melodic line. The Ocarina part is the simplest, with mostly rests. The Violoncello part is in the middle, providing a steady accompaniment. The Solo part is the most complex, with many notes and a clear melodic line. The Ocarina part is the simplest, with mostly rests. The Violoncello part is in the middle, providing a steady accompaniment. The Solo part is the most prominent, with many notes and a clear melodic line.

Copyright © 1998 by dave
Copyright © 1998 by dave

2

9

Oc.

Vc.

Solo

Detailed description: This system contains measures 9 and 10. The Oboe (Oc.) part starts with a whole note G4, followed by a triplet of eighth notes (A4, B4, C5) and a half note D5. The Violoncello (Vc.) part features a bass line with a triplet of eighth notes (G2, F2, E2) and a sustained chord of G2, B2, D3. The Solo part has a treble line with a half note G4 and a half note A4, and a complex bass line with multiple voices and a triplet of eighth notes.

11

Oc.

Vc.

Solo

Detailed description: This system contains measures 11 and 12. The Oboe (Oc.) part continues with a half note D5 and a whole note G5. The Violoncello (Vc.) part continues with the same bass line and chord. The Solo part continues with a half note B4 and a half note C5, with a complex bass line.

13

Oc.

Vc.

Detailed description: This system contains measures 13 and 14. The Oboe (Oc.) part has a whole note G4, followed by a whole note A4, and then a whole note B4. The Violoncello (Vc.) part has a bass line with a sustained chord of G2, B2, D3.

17

Oc.

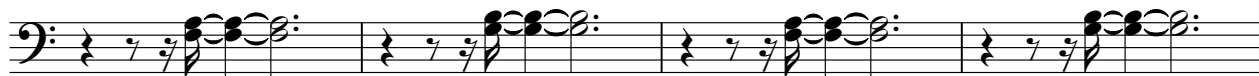
Vc.

Detailed description: This system contains measures 17 and 18. The Oboe (Oc.) part has a whole note G4, followed by a whole note A4, and then a whole note B4. The Violoncello (Vc.) part has a bass line with a sustained chord of G2, B2, D3.

♩ = 73,999985



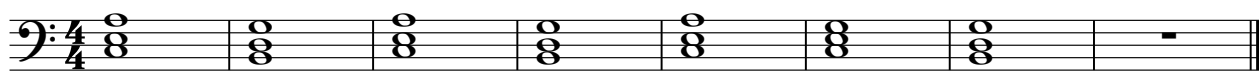
5



9



13



Copyright © 1998 by dave
Copyright © 1998 by dave

Video Game Themes - Zelda: Ocarina Of Time

Solo

♩ = 73,999985

The first system of the solo consists of three measures. The top staff is in treble clef with a 6/4 time signature. The bottom staff shows guitar fretboard diagrams with notes indicated by dots. The first measure contains a whole note chord, the second a half note chord, and the third a quarter note chord.

4

The second system consists of two measures. The top staff continues the melody with a half note and a quarter note. The bottom staff shows the corresponding guitar fretboard diagrams.

6

The third system consists of two measures. The top staff continues the melody with a half note and a quarter note. The bottom staff shows the corresponding guitar fretboard diagrams.

8

The fourth system consists of two measures. The top staff continues the melody with a half note and a quarter note. The bottom staff shows the corresponding guitar fretboard diagrams.

10

The fifth system consists of two measures. The top staff continues the melody with a half note and a quarter note. The bottom staff shows the corresponding guitar fretboard diagrams.

12

The sixth system consists of two measures. The top staff continues the melody with a half note and a quarter note. The bottom staff shows the corresponding guitar fretboard diagrams. The second measure ends with a double bar line and a repeat sign. A large number '8' is placed above the second measure, indicating the number of frets for the final chord.

Copyright © 1998 by dave
Copyright © 1998 by dave