

Video Game Themes - Mega Man X3

♩ = 187,000351

Staff-4

Staff-5

Staff-1

Staff-3

By Capcom, Remixed by Jarel Jones
Mega Man X3 Intro Stage
Mega Man X3 Intro Stage Composer

Staff

♩ = 187,000351

Staff-2

Copyright © 1995 by Capcom, © 1999 by Jarel Jones
All Rights Reserved

4

Staff-4: Treble clef, rhythmic eighth-note pattern.

Staff-5: Treble clef, guitar rhythm with 'x' marks for muted notes and '*' for accents.

Staff-1: Treble clef, chordal accompaniment.

Staff-3: Bass clef, bass line.

Staff: Treble clef, vocal line with lyrics.

Staff-2: Bass clef, guitar accompaniment with slurs.

7

Staff-4: Treble clef, rhythmic eighth-note pattern.

Staff-5: Treble clef, guitar rhythm with 'x' marks and '*' for accents.

Staff-1: Treble clef, chordal accompaniment.

Staff-3: Bass clef, bass line.

Staff: Treble clef, vocal line with lyrics.

Staff-2: Bass clef, guitar accompaniment with slurs.

9

Staff-4

Staff-5

Staff-1

Staff-3

Staff

Staff-2

11

Staff-4

Staff-5

Staff-1

Staff-3

Staff

Staff-2

13

Staff-4: Treble clef, rhythmic eighth-note pattern.

Staff-5: Treble clef, guitar-style notation with 'x' marks for muted notes and diamond symbols for accents.

Staff-1: Treble clef, chordal accompaniment with block chords.

Staff-3: Bass clef, bass line with eighth notes.

Staff: Treble clef, melodic line with eighth notes.

Staff-2: Bass clef, bass line with long horizontal lines indicating sustained notes.

15

Staff-4: Treble clef, rhythmic eighth-note pattern.

Staff-5: Treble clef, guitar-style notation with 'x' marks and diamond symbols.

Staff-1: Treble clef, chordal accompaniment with block chords.

Staff-3: Bass clef, bass line with eighth notes.

Staff: Treble clef, melodic line with eighth notes.

Staff-2: Bass clef, bass line with long horizontal lines indicating sustained notes.

17

Staff-4

Staff-5

Staff-1

Staff-3

Staff

Staff-2

Staff-4: Rhythmic notation with eighth notes and rests.

Staff-5: Rhythmic notation with eighth notes and rests, including asterisks.

Staff-1: Vocal line with lyrics: "I'm not a hero, I'm just a man who's trying to do the right thing." (Note: lyrics are partially obscured by the image quality).

Staff-3: Bass line with lyrics: "I'm not a hero, I'm just a man who's trying to do the right thing." (Note: lyrics are partially obscured by the image quality).

Staff: Piano part with sixteenth-note runs and sixteenth-note groupings.

Staff-2: Bass part with chords and a melodic line.

20

Staff-4

Staff-5

Staff-1

Staff-3

Staff

Staff-2

Staff-4: Rhythmic notation with eighth notes and rests.

Staff-5: Rhythmic notation with eighth notes and rests, including asterisks.

Staff-1: Vocal line with lyrics: "I'm not a hero, I'm just a man who's trying to do the right thing." (Note: lyrics are partially obscured by the image quality).

Staff-3: Bass line with lyrics: "I'm not a hero, I'm just a man who's trying to do the right thing." (Note: lyrics are partially obscured by the image quality).

Staff: Piano part with sixteenth-note runs and a triplet.

Staff-2: Bass part with chords and a melodic line.

23

Staff-4

Staff-5

Staff-1

Staff-3

Staff

Staff-2

26

Staff-4

Staff-5

Staff-1

Staff-3

Staff

Staff-2

29

Staff-4

Staff-5

Staff-1

Staff-3

Staff

Staff-2

32

Staff-4

Staff-5

Staff-1

Staff-3

Staff

Staff-2

35

Staff-4

Staff-5

Staff-1

Staff-3

Staff

Staff-2

38

Staff-4

Staff-5

Staff-1

Staff-3

Staff

Staff-2

40

Staff-4: Treble clef, rhythmic eighth-note pattern.

Staff-5: Treble clef, guitar-style notation with 'x' and '*' symbols.

Staff-1: Treble clef, chordal accompaniment.

Staff-3: Bass clef, bass line.

Staff: Treble clef, melodic line.

Staff-2: Bass clef, bass line with long notes.

42

Staff-4: Treble clef, rhythmic eighth-note pattern.

Staff-5: Treble clef, guitar-style notation with 'x' and '*' symbols.

Staff-1: Treble clef, chordal accompaniment.

Staff-3: Bass clef, bass line.

Staff: Treble clef, melodic line.

Staff-2: Bass clef, bass line with long notes.

44

Staff-4

Staff-5

Staff-1

Staff-3

Staff

Staff-2

46

Staff-4

Staff-5

Staff-1

Staff-3

Staff

Staff-2

48

Staff-4

Staff-5

Staff-1

Staff-3

Staff

Staff-2

Staff-4: Rhythmic notation with eighth notes and quarter notes.

Staff-5: Rhythmic notation with eighth notes and quarter notes, including asterisks.

Staff-1: Vocal line with lyrics: "I'm a soldier in the army of the Lord".

Staff-3: Bass line with lyrics: "I'm a soldier in the army of the Lord".

Staff: Melodic line with sixteenth-note runs and sixteenth-note chords marked with '6'.

Staff-2: Bass staff with chords and a bass line.

51

Staff-4

Staff-5

Staff-1

Staff-3

Staff

Staff-2

Staff-4: Rhythmic notation with eighth notes and quarter notes.

Staff-5: Rhythmic notation with eighth notes and quarter notes, including asterisks.

Staff-1: Vocal line with lyrics: "I'm a soldier in the army of the Lord".

Staff-3: Bass line with lyrics: "I'm a soldier in the army of the Lord".

Staff: Melodic line with sixteenth-note runs and sixteenth-note chords marked with '6'.

Staff-2: Bass staff with chords and a bass line.

53

Staff-4

Staff-5

Staff-1

Staff-3

Staff

Staff-2

56

Staff-4

Staff-5

Staff-1

Staff-3

Staff

Staff-2

59

Staff-4

Staff-5

Staff-1

Staff-3

Staff

Staff-2

Detailed description: This system covers measures 59, 60, and 61. Staff 4 (top) features a rhythmic guitar part with eighth-note patterns. Staff 5 (second from top) shows guitar fretting with 'x' marks for muted notes and '*' for natural notes. Staff 1 (treble clef) and Staff 2 (bass clef) provide piano accompaniment with chords and melodic fragments. Staff 3 (bass clef) has a bass line with eighth notes. The unlabeled staff (fourth from top) has a treble clef and contains a melodic line with slurs.

62

Staff-4

Staff-5

Staff-1

Staff-3

Staff

Staff-2

Detailed description: This system covers measures 62, 63, and 64. Staff 4 (top) continues the rhythmic guitar part. Staff 5 (second from top) continues the fretting notation. Staff 1 (treble clef) and Staff 2 (bass clef) feature piano accompaniment with sustained chords and melodic lines. Staff 3 (bass clef) continues the bass line. The unlabeled staff (fourth from top) continues the melodic line with slurs.

Video Game Themes - Mega Man X3

Staff-4

♩ = 187,000351



Copyright © 1995 by Capcom, © 1999 by Jarel Jones
All Rights Reserved

V.S.

2

Staff-4

41



45



49



53



57



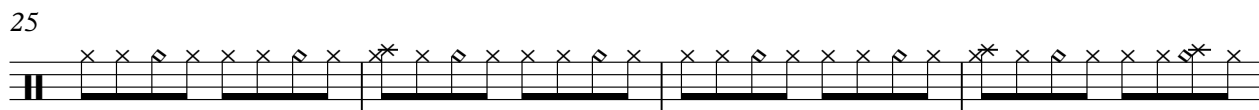
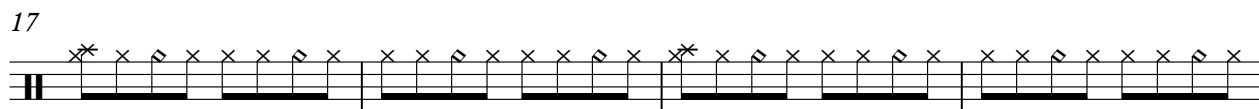
61



Video Game Themes - Mega Man X3

Staff-5

♩ = 187,000351



Copyright © 1995 by Capcom, © 1999 by Jarel Jones
All Rights Reserved

V.S.

2

Staff-5

41



45



49



53



57



61



Video Game Themes - Mega Man X3

Staff-1

♩ = 187,000351

4

7

10

13

16

20

25

30

35

Copyright © 1995 by Capcom, © 1999 by Jarel Jones
All Rights Reserved

V.S.

38

41

44

47

51

56

60

Video Game Themes - Mega Man X3

Staff-3

♩ = 187,000351



5



9



13



17



22



27



32



36



40



Copyright © 1995 by Capcom, © 1999 by Jarel Jones
All Rights Reserved

V.S.

44



48



52



57



61



Video Game Themes - Mega Man X3

Staff

♩ = 187,000351

By Capcom, Remixed by Jarel Jones

Mega Man X3 Nitro Stage Composer

8

12

15

19

22

26

31

38

42

Copyright © 1995 by Capcom, © 1999 by Jarel Jones
All Rights Reserved

V.S.

45

49

52

56

60

Video Game Themes - Mega Man X3

Staff-2

$\text{♩} = 187,000351$

7

12

18

23

28

34

39

44

50

Detailed description: This image shows a musical score for a video game theme. It consists of ten staves of music, each containing measures 1 through 50. The music is written in a complex, multi-measure rest notation, where notes are grouped into large, multi-measure rests. The key signature is one sharp (F#), and the time signature is 4/4. The tempo is indicated as 187,000351. The score is arranged in a single system with ten staves, each starting with a measure number (1, 7, 12, 18, 23, 28, 34, 39, 44, 50). The notation is dense and intricate, typical of a high-speed or complex rhythm game theme.

Copyright © 1995 by Capcom, © 1999 by Jarel Jones
All Rights Reserved

V.S.

2

Staff-2

55

Musical staff 2, measures 55-59. The staff is in bass clef with a key signature of one sharp (F#). The music consists of a sequence of chords and melodic lines. Measure 55 starts with a treble clef and a 6/8 time signature, followed by a series of chords and a melodic line. Measures 56-59 continue with similar chordal and melodic patterns, including some longer note values and ties.

60

Musical staff 2, measures 60-64. The staff is in bass clef with a key signature of one sharp (F#). The music continues with a sequence of chords and melodic lines. Measure 60 starts with a treble clef and a 6/8 time signature, followed by a series of chords and a melodic line. Measures 61-64 continue with similar chordal and melodic patterns, including some longer note values and ties.