

# Bach, Johann Sebastian - Cantatas

0.0"  
1.1.00  
Bach, Johann Sebastian - BWV 159: srdan.depolo@rit.com.hr

♩ = 43,949989    ♩ = 43,949989

Oboe

Harpsichord

Violin I

Violin II

Viola

Violoncello

Detailed description: This system contains measures 1 through 4 of the piece. The Oboe part begins in measure 2 with a melodic line. The Harpsichord provides a harmonic accompaniment with chords in both hands. The Violin I and II parts play sustained notes with long slurs. The Viola and Violoncello parts provide a steady bass line.



Oboe

Harpsichord

Violin I

Violin II

Viola

Violoncello

5

Detailed description: This system contains measures 5 through 8. The Oboe part continues its melodic line, starting with a dynamic marking of *ff*. The Harpsichord accompaniment continues with chords. The Violin I and II parts play moving lines. The Viola and Violoncello parts continue their respective parts. A measure number '5' is placed above the first measure of this system.

9

Oboe

Bass solo

Harpsichord

Violin I

Violin II

Viola

Violoncello

Detailed description: This is a page of a musical score, page 2, starting at measure 9. The score is for a chamber ensemble consisting of Oboe, Bass solo, Harpsichord, Violin I, Violin II, Viola, and Violoncello. The key signature is B-flat major (two flats). The Oboe part begins with a sixteenth-note run, followed by a triplet of sixteenth notes, and then a series of eighth notes. The Bass solo part has a rest for the first measure, then enters with a series of eighth notes. The Harpsichord part provides harmonic support with chords and single notes. The Violin I part has a melodic line with some slurs. The Violin II part has a simpler melodic line. The Viola part has a line of eighth notes. The Violoncello part has a line of eighth notes. The score is written in a standard musical notation style with a common time signature.

12

Oboe

Bass solo

Harpsichord

Violin I

Violin II

Viola

Violoncello

Detailed description: This is a page of a musical score, page 3, starting at measure 12. The score is for a chamber ensemble consisting of Oboe, Bass solo, Harpsichord, Violin I, Violin II, Viola, and Violoncello. The music is in a key with two flats (B-flat and E-flat) and a 3/4 time signature. The Oboe part features a melodic line with a slur over the first two measures and a fermata in the third. The Bass solo part has a more active, rhythmic line. The Harpsichord provides a harmonic accompaniment with chords and moving lines in both hands. The Violin I part has a melodic line with a slur and a fermata. The Violin II part has a melodic line with a slur and a fermata. The Viola part has a melodic line with a slur and a fermata. The Violoncello part has a rhythmic accompaniment.

16

Oboe

Bass solo

Harpsichord

Violin I

Violin II

Viola

Violoncello

Detailed description: This is a page of a musical score, page 4, starting at measure 16. The score is for a chamber ensemble consisting of Oboe, Bass solo, Harpsichord, Violin I, Violin II, Viola, and Violoncello. The music is in a key with two flats (B-flat major or D minor) and a 3/4 time signature. The Oboe part has a sparse, melodic line with rests. The Bass solo part features a more active, rhythmic line with eighth and sixteenth notes. The Harpsichord part provides harmonic support with chords and arpeggiated figures. The string parts (Violin I, Violin II, Viola, and Violoncello) play a steady, rhythmic accompaniment, with the Violoncello often playing a bass line of eighth notes.

20

Oboe

Bass solo

Harpsichord

Violin I

Violin II

Viola

Violoncello

Detailed description: This is a page of a musical score, page 5, starting at measure 20. The score is for a chamber ensemble consisting of Oboe, Bass solo, Harpsichord, Violin I, Violin II, Viola, and Violoncello. The music is in a key signature of two flats (B-flat and E-flat) and a common time signature. The Oboe part features a melodic line with some grace notes and rests. The Bass solo part has a rhythmic, eighth-note pattern. The Harpsichord part provides harmonic support with chords and a steady bass line. The Violin I and II parts have melodic lines with some rests. The Viola part has a more sustained, chordal texture. The Violoncello part has a rhythmic pattern similar to the Bass solo. The score is written on seven staves, with the Harpsichord part using a grand staff (treble and bass clefs).

24

Oboe

Bass solo

Harpsichord

Violin I

Violin II

Viola

Violoncello



28

Oboe

Harpsichord

Violin I

Violin II

Viola

Violoncello



35  $\text{♩} = 56,520008$   $\text{♩} = 59,040009$

Oboe

Bass solo

Harpsichord

Violin I  $\text{♩} = 56,520008$   $\text{♩} = 59,040009$

Violin II

Viola

Violoncello



37  $\text{♩} = 62,400028$   $\text{♩} = 59,880001$

Oboe

Bass solo

Harpsichord

Violin I  $\text{♩} = 62,400028$   $\text{♩} = 59,880001$

Violoncello





42 ♩ = 48,590000 ♩ = 62,280010 ♩ = 62,280010

Oboe

Bass solo

Harpsichord

Violin I

Violin II

Viola

Violoncello

♩ = 48,590000 ♩ = 62,280010 ♩ = 62,280010



45

Oboe

Bass solo

Harpsichord

Violin I

Violoncello

47  $\text{♩} = 62,280010$   $\text{♩} = 60,0000000008$   $\text{♩} = 55,999987$   $\text{♩} = 55,999977$  <sup>11</sup>

Oboe

Bass solo

Harpsichord

Violin I

Violoncello



49  $\text{♩} = 55,000004$   $\text{♩} = 53,000023$   $\text{♩} = 58,999985$   $\text{♩} = 60,0000000000$   $\text{♩} = 55,999992$   $\text{♩} = 55,000011$

Oboe

Bass solo

Harpsichord

Violin I

Violin II

Viola

Violoncello

52 ♪ = 43,779995      ♪ = 42,990013      ♪ = 42,000011      ♪ = 44,789989

Oboe

Bass solo

Harpsichord

Violin I

Violin II

Viola

Violoncello

56  $\text{♩} = 44,789989$   $\text{♩} = 43,180004$   $\text{♩} = 43,199997$   $\text{♩} = 43,180004$

Oboe

Bass solo

Harpsichord

Violin I

Violin II

Viola

Violoncello



60  $\text{♩} = 43,390003$   $\text{♩} = 43,610008$   $\text{♩} = 44,000011$   $\text{♩} = 44,209999$

Oboe

Harpsichord

Violin I

Violin II

Viola

Violoncello

64  $\text{♩} = 44,200001$   $\text{♩} = 42,390003$   $\text{♩} = 40,770008$   $\text{♩} = 40,320007$

Oboe

Harpisichord

Violin I

Violin II

Viola

Violoncello

68  $\text{♩} = 40,010002$   $\text{♩} = 39,850000$   $\text{♩} = 39,570000$   $\text{♩} = 39,290000$   $\text{♩} = 39,010000$

Oboe

78  $\text{♩} = 30,169992$   $\text{♩} = 30,159998$   $\text{♩} = 30,159998$   $\text{♩} = 30,149996$

Oboe

88  $\text{♩} = 30,169992$

Oboe

98  $\text{♩} = 25,259998$

Oboe

108  $\text{♩} = 48,000000$

Oboe

118  $\text{♩} = 48,999992$

Oboe

128

Oboe

♩ = 50,000000

138

Oboe

148

Oboe

158

♩ = 50,999981

Oboe

168

Oboe

178

♩ = 52,000008

Oboe

188

Oboe

198

♩ = 53,000023

Oboe

208

Oboe

218

♩ = 54,000004

Oboe

228

Oboe

238

♩ = 55,000004

Oboe

248

Oboe

258

♩ = 55,999977

Oboe



268  
Oboe



278

$\text{♩} = 56,999977$

Oboe



288

Oboe



298

$\text{♩} = 57,999985$

Oboe



308

Oboe



318

$\text{♩} = 59,000008$

Oboe



328

Oboe



334

$\text{♩} = 60,000000$

Oboe



Bach, Johann Sebastian - Cantatas

Oboe

♩ = 43,949989 ♩ = 43,949989

5

9

13

18

23

28

32

36

39

♩ = 45,500000

♩ = 59,040009    ♩ = 62,400028    ♩ = 59,880001

♩ = 59,880001    ♩ = 60,300000    ♩ = 75,500000    ♩ = 48,590000

V.S.

43 ♩ = 62,280010 ♩ = 62,280010

47 ♩ = 62,280010 ♩ = 60,059,0000 057,956,9999 0000 43,600,0000 50,9999

50 ♩ = 50,000,0000 0000 0000 245,000011 ♩ = 43,779995 ♩ = 42,990013

54 ♩ = 42,000011 ♩ = 44,789989 ♩ = 44,789989 ♩ = 43,180004

58 ♩ = 43,199997 ♩ = 43,180004 ♩ = 43,390003 ♩ = 43,610008

62 ♩ = 44,000011 ♩ = 44,209999 ♩ = 44,200001 ♩ = 42,390003

66 ♩ = 40,770008 ♩ = 40,320007 ♩ = 40,010008 50006 ♩ = 39,720,0000 007

72 ♩ = 39,449989 ♩ = 39,299982 50011 ♩ = 30,169992 ♩ = 30,159998 ♩ = 30,159998

87 ♩ = 30,149996 ♩ = 30,169992 ♩ = 25,259998 ♩ = 48,000000

127 ♩ = 48,999992 ♩ = 50,000000 ♩ = 50,999981

Oboe

184

♩ = 52,000004      ♩ = 53,000023      ♩ = 54,000004

**20**      **19**      **19**

242

♩ = 55,000004      ♩ = 55,999977      ♩ = 56,999977

**19**      **19**      **19**

299

♩ = 57,999985      ♩ = 59,000000

**19**      **20**





Bach, Johann Sebastian - Cantatas

Harpisichord

♩ = 43,949989    ♩ = 43,949989

Measures 1-5 of the harpsichord part. The music is in G minor (two flats) and 4/4 time. It begins with a whole rest in the right hand, followed by a quarter rest and a quarter note G4. The left hand plays a steady accompaniment of chords and eighth notes.

Measures 6-10. The right hand continues with chords and some eighth-note patterns. The left hand maintains the accompaniment. Measure 10 ends with a quarter rest in the right hand.

Measures 11-15. The right hand features more active eighth-note patterns. The left hand accompaniment continues with chords and eighth notes.

Measures 16-20. The right hand has a melodic line with eighth notes. The left hand accompaniment consists of chords and eighth notes.

Measures 21-25. The right hand continues with eighth-note patterns. The left hand accompaniment is consistent with the previous measures.

Measures 26-30. The right hand has a melodic line with eighth notes. The left hand accompaniment continues with chords and eighth notes.

V.S.



Harpsichord

59 ♯ = 43,180004 ♯ = 43,390003 ♯ = 43,610008 ♯ = 44,000011 ♯ = 44,209999 ♯ = 44,200001

65 ♯ = 42,390003 ♯ = 40,770008 ♯ = 40,320007 ♯ = 40,010002 ♯ = 39,730006 ♯ = 39,730007 ♯ = 39,449989

73 ♯ = 39,299989 ♯ = 39,250011 ♯ = 30,169992 ♯ = 30,159998 ♯ = 30,159998 ♯ = 30,149996

95 ♯ = 30,169992 ♯ = 25,259998 ♯ = 48,000000 ♯ = 48,999992

146 ♯ = 50,000000 ♯ = 50,999981 ♯ = 52,000000

204 ♯ = 53,000023 ♯ = 54,000004 ♯ = 55,000004

261 ♯ = 55,999977 ♯ = 56,999977

299 ♯ = 57,999985 ♯ = 59,000000



Bach, Johann Sebastian - Cantatas

Violin I

♩ = 43,949989 ♩ = 43,949989

8

14

20

26

32

36 ♩ = 59,040009 ♩ = 62,400028 ♩ = 59,880001

39 ♩ = 59,880001 ♩ = 60,000000 ♩ = 57,999999 ♩ = 60,000000 ♩ = 48,590000

43 ♩ = 62,280010 ♩ = 62,280010

47 ♩ = 62,280010 ♩ = 60,000000 ♩ = 57,999999 ♩ = 55,000000 ♩ = 232,000000 ♩ = 999999

V.S.



Bach, Johann Sebastian - Cantatas

Violin II

♩ = 43,949989 ♩ = 43,949989

8

14

19

25

32

39

49

57

64

3

2

Violin II

71  $\text{♩} = 39,570007 = 39,49982999889,250011$   $\text{♩} = 30,169992$   $\text{♩} = 30,159998$   $\text{♩} = 30,159998$

**4** **3** **5**

87  $\text{♩} = 30,149996$   $\text{♩} = 30,169992$   $\text{♩} = 25,259998$   $\text{♩} = 48,000000$

**8** **7** **6** **19**

127  $\text{♩} = 48,999992$   $\text{♩} = 50,000000$   $\text{♩} = 50,999981$

**19** **19** **19**

184  $\text{♩} = 52,000008$   $\text{♩} = 52,000008$   $\text{♩} = 54,000004$

**20** **19** **19**

242  $\text{♩} = 55,000004$   $\text{♩} = 55,999977$   $\text{♩} = 56,999977$

**19** **19** **19**

299  $\text{♩} = 57,999985$   $\text{♩} = 59,000000$

**19** **20**



2

Viola

72  $\text{♩} = 39,449989$   $\text{♩} = 39,299982$   $\text{♩} = 39,250011$   $\text{♩} = 30,169992$   $\text{♩} = 30,159998$   $\text{♩} = 30,159998$

**4** **3** **5**

87  $\text{♩} = 30,149996$   $\text{♩} = 30,169992$   $\text{♩} = 25,259998$   $\text{♩} = 48,000000$

**8** **7** **6** **19**

127  $\text{♩} = 48,999992$   $\text{♩} = 50,000000$   $\text{♩} = 50,999981$

**19** **19** **19**

184  $\text{♩} = 52,000000$   $\text{♩} = 52,000000$   $\text{♩} = 54,000004$

**20** **19** **19**

242  $\text{♩} = 55,000004$   $\text{♩} = 55,999977$   $\text{♩} = 56,999977$

**19** **19** **19**

299  $\text{♩} = 57,999985$   $\text{♩} = 59,000000$

**19** **20**

Bach, Johann Sebastian - Cantatas

Violoncello

♩ = 43,949989 ♩ = 43,949989



7



13



19



25



31

~~♩ = 59,040009~~ ♩ = 59,040009



37

♩ = 62,400028 ♩ = 59,880001 ♩ = 59,880001 ♩ = 60,000000 ♩ = 57,959997 ♩ = 54,000000



41

~~♩ = 52,000000~~ ♩ = 48,590000 ♩ = 62,280010 ♩ = 62,280010



47

♩ = 62,280010 ♩ = 60,000000 ♩ = 55,959997 ♩ = 54,000000 ♩ = 52,600000 ♩ = 50,000000



51

♩ = 45,000011 ♩ = 43,779995 ♩ = 42,990013 ♩ = 42,000011 ♩ = 44,789989 ♩ = 44,789989



V.S.

2

Violoncello

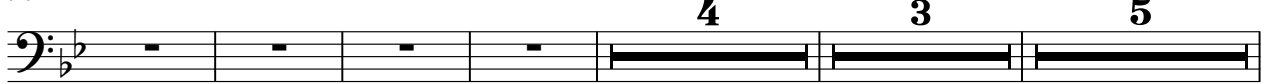
57 ♯ = 43,180004 ♯ = 43,199997 ♯ = 43,180004 ♯ = 43,390003 ♯ = 43,610008 ♯ = 44,000011



63 ♯ = 44,209999 ♯ = 44,200001 ♯ = 42,390003 ♯ = 40,770008 ♯ = 40,320007 ♯ = 40,010002 ♯ = 40,020006



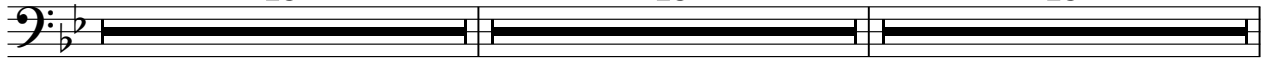
70 ♯ = 39,720001 ♯ = 39,570004 ♯ = 39,299989 ♯ = 39,299985 ♯ = 30,169992 ♯ = 30,159998



86 ♯ = 30,159998 ♯ = 30,149996 ♯ = 30,169992 ♯ = 25,259998 ♯ = 48,000000



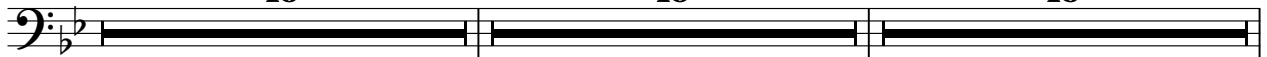
127 ♯ = 48,999992 ♯ = 50,000000 ♯ = 50,999981



184 ♯ = 52,000008 ♯ = 52,000023 ♯ = 54,000004



242 ♯ = 55,000004 ♯ = 55,999977 ♯ = 56,999977



299 ♯ = 57,999985 ♯ = 59,000008 ♯ = 60,000000

