

Bach, Johann Sebastian - Cantatas

$\text{♩} = 100,000000$

Bassoon

Aria : Unser Starke heisst zu schwach

From Kantata 14 by JS BACH

Arranged and Sequenced by MJ Starke

E-mail mjstarke@ix.netcom.com

3

Bsn.

Aria : Unser Starke heisst zu schwach

From Kantata 14 by JS BACH

Arranged and Sequenced by MJ Starke

E-mail mjstarke@ix.netcom.com

5

Bsn.

Aria :Unser Starke heisst zu schwach

From Kantata 14 by JS BACH

Arranged and Sequenced by MJ Starke

E-mail mjstarke@ix.netcom.com

7

Bsn.

Aria :Unser Starke heisst zu schwach

From Kantata 14 by JS BACH

Arranged and Sequenced by MJ Starke

E-mail mjstarke@ix.netcom.com

9

Bsn.

Aria :Unser Starke heisst zu schwach

From Kantata 14 by JS BACH

Arranged and Sequenced by MJ Starke

E-mail mjstarke@ix.netcom.com

10

Bsn.

Aria :Unser Starke heisst zu schwach

From Kantata 14 by JS BACH

Arranged and Sequenced by MJ Starke

E-mail mjstarke@ix.netcom.com

11

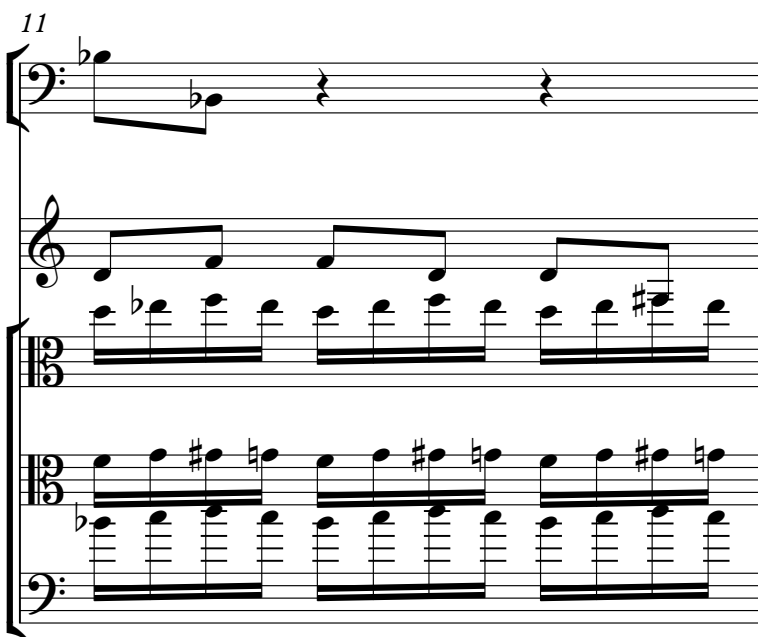
Bsn.

Aria :Unser Starke heisst zu schwach

From Kantata 14 by JS BACH

Arranged and Sequenced by MJ Starke

E-mail mjstarke@ix.netcom.com



12


Bsn.

Aria :Unser Starke heisst zu schwach

From Kantata 14 by JS BACH

Arranged and Sequenced by MJ Starke

E-mail mjstarke@ix.netcom.com



14

Bsn.

Aria :Unser Starke heisst zu schwach

From Kantata 14 by JS BACH

Arranged and Sequenced by MJ Starke

E-mail mjstarke@ix.netcom.com

16

Bsn.

Aria :Unser Starke heisst zu schwach

From Kantata 14 by JS BACH

Arranged and Sequenced by MJ Starke

E-mail mjstarke@ix.netcom.com

18

Bsn.

Aria :Unser Starke heisst zu schwach

From Kantata 14 by JS BACH

Arranged and Sequenced by MJ Starke

E-mail mjstarke@ix.netcom.com

20

©1995mjstarke

Bsn.

Aria :Unser Starke heisst zu schwach

From Kantata 14 by JS BACH

Arranged and Sequenced by MJ Starke

E-mail mjstarke@ix.netcom.com

©1995mjstarke

From Kantata 14 by JS BACH

Arranged and Sequenced by MJ Starke

E-mail mjstarke@ix.netcom.com



©1995mjstarke


Bsn.

Aria :Unser Starke heisst zu schwach

From Kantata 14 by JS BACH

Arranged and Sequenced by MJ Starke

E-mail mjstarke@ix.netcom.com



25

©1995mjstarke

Bsn.

Aria :Unser Starke heisst zu schwach

From Kantata 14 by JS BACH

Arranged and Sequenced by MJ Starke

E-mail mjstarke@ix.netcom.com

26

©1995mjstarke

Bsn.

Aria :Unser Starke heisst zu schwach

From Kantata 14 by JS BACH

Arranged and Sequenced by MJ Starke

E-mail mjstarke@ix.netcom.com

28

©1995mjstarke

Bsn.

Aria :Unser Starke heisst zu schwach

From Kantata 14 by JS BACH

Arranged and Sequenced by MJ Starke

E-mail mjstarke@ix.netcom.com

Detailed description: This block contains the musical notation for measures 28 through 31. It consists of five staves. The top staff is a treble clef with a key signature of one flat (Bb) and a common time signature. The second staff is a bass clef labeled 'Bsn.'. The third staff is a vocal line with lyrics: 'Aria :Unser Starke heisst zu schwach'. The fourth staff is a bass clef with a key signature of one flat. The fifth staff is a bass clef with a key signature of one flat. The music includes various note values, rests, and accidentals.

29

©1995mjstarke

Bsn.

Aria :Unser Starke heisst zu schwach

From Kantata 14 by JS BACH

Arranged and Sequenced by MJ Starke

E-mail mjstarke@ix.netcom.com

Detailed description: This block contains the musical notation for measures 29 through 32. It consists of five staves. The top staff is a treble clef with a key signature of one flat (Bb) and a common time signature. The second staff is a bass clef labeled 'Bsn.'. The third staff is a vocal line with lyrics: 'Aria :Unser Starke heisst zu schwach'. The fourth staff is a bass clef with a key signature of one flat. The fifth staff is a bass clef with a key signature of one flat. The music includes various note values, rests, and accidentals.

30

©1995mjstarke

Bsn.

Aria :Unser Starke heisst zu schwach

From Kantata 14 by JS BACH

Arranged and Sequenced by MJ Starke

E-mail mjstarke@ix.netcom.com

31

©1995mjstarke

Bsn.

Aria :Unser Starke heisst zu schwach

From Kantata 14 by JS BACH

Arranged and Sequenced by MJ Starke

E-mail mjstarke@ix.netcom.com

32

©1995mjstarke

Bsn.

Aria :Unser Starke heisst zu schwach

From Kantata 14 by JS BACH

Arranged and Sequenced by MJ Starke

E-mail mjstarke@ix.netcom.com

34

©1995mjstarke

Bsn.

From Kantata 14 by JS BACH

Arranged and Sequenced by MJ Starke

E-mail mjstarke@ix.netcom.com

©1995mjstarke

36

Bsn.

From Kantata 14 by JS BACH

Arranged and Sequenced by MJ Starke

E-mail mjstarke@ix.netcom.com

©1995mjstarke

38

Bsn.

From Kantata 14 by JS BACH

Arranged and Sequenced by MJ Starke

E-mail mjstarke@ix.netcom.com

©1995mjstarke

40

Bsn.

From Kantata 14 by JS BACH

Arranged and Sequenced by MJ Starke

E-mail mjstarke@ix.netcom.com

©1995mjstarke

42

Bsn.

From Kantata 14 by JS BACH

Arranged and Sequenced by MJ Starke

E-mail mjstarke@ix.netcom.com

44

©1995mjstarke

Bsn.

Aria :Unser Starke heisst zu schwach

From Kantata 14 by JS BACH

Arranged and Sequenced by MJ Starke

E-mail mjstarke@ix.netcom.com

45

Bsn.

Aria :Unser Starke heisst zu schwach

From Kantata 14 by JS BACH

Arranged and Sequenced by MJ Starke

E-mail mjstarke@ix.netcom.com

46

©1995mjstarke

Bsn.

Aria :Unser Starke heisst zu schwach

From Kantata 14 by JS BACH

Arranged and Sequenced by MJ Starke

E-mail mjstarke@ix.netcom.com

48

©1995mjstarke

Bsn.

Aria :Unser Starke heisst zu schwach

From Kantata 14 by JS BACH

Arranged and Sequenced by MJ Starke

E-mail mjstarke@ix.netcom.com

50

©1995mjstarke

Bsn.

Aria :Unser Starke heisst zu schwach

From Kantata 14 by JS BACH

Arranged and Sequenced by MJ Starke

E-mail mjstarke@ix.netcom.com

52

©1995mjstarke

Bsn.

Aria :Unser Starke heisst zu schwach

From Kantata 14 by JS BACH

Arranged and Sequenced by MJ Starke

E-mail mjstarke@ix.netcom.com

54

©1995mjstarke

Bsn.

Aria :Unser Starke heisst zu schwach

From Kantata 14 by JS BACH

Arranged and Sequenced by MJ Starke

E-mail mjstarke@ix.netcom.com

55

©1995mjstarke

Bsn.

From Kantata 14 by JS BACH

Arranged and Sequenced by MJ Starke

E-mail mjstarke@ix.netcom.com

©1995mjstarke

56

Bsn.

From Kantata 14 by JS BACH

Arranged and Sequenced by MJ Starke

E-mail mjstarke@ix.netcom.com

©1995mjstarke

57

Bsn.

From Kantata 14 by JS BACH

Arranged and Sequenced by MJ Starke

E-mail mjstarke@ix.netcom.com

58

©1995mjstarke

Bsn.

From Kantata 14 by JS BACH

Arranged and Sequenced by MJ Starke

E-mail mjstarke@ix.netcom.com

59

©1995mjstarke

Bsn.

From Kantata 14 by JS BACH

Arranged and Sequenced by MJ Starke

E-mail mjstarke@ix.netcom.com

©1995mjstarke

60

Bsn.

From Kantata 14 by JS BACH

Arranged and Sequenced by MJ Starke

E-mail mjstarke@ix.netcom.com

©1995mjstarke

61

Bsn.

From Kantata 14 by JS BACH

Arranged and Sequenced by MJ Starke

E-mail mjstarke@ix.netcom.com

62

©1995mjstarke

Bsn.

From Kantata 14 by JS BACH

Arranged and Sequenced by MJ Starke

E-mail mjstarke@ix.netcom.com

64

©1995mjstarke

Bsn.

From Kantata 14 by JS BACH

65

©1995mjstarke

Bsn.

From Kantata 14 by JS BACH

©1995mjstarke

66

Bsn.

From Kantata 14 by JS BACH

Detailed description: This block contains the musical notation for measure 66. It consists of three staves. The top staff is in Treble clef with a key signature of one flat (B-flat). The middle staff is labeled 'Bsn.' and is in Bass clef. The bottom staff is in Bass clef. The Treble staff contains a melodic line with a slur over the final two notes. The Bassoon staff contains a rhythmic accompaniment with eighth notes and rests. The Cello/Bass staff contains a steady eighth-note accompaniment.

©1995mjstarke

67

Bsn.

From Kantata 14 by JS BACH

Detailed description: This block contains the musical notation for measure 67. It consists of three staves. The top staff is in Treble clef with a key signature of one flat. The middle staff is labeled 'Bsn.' and is in Bass clef. The bottom staff is in Bass clef. The Treble staff contains a melodic line with eighth notes. The Bassoon staff contains a rhythmic accompaniment with eighth notes and rests. The Cello/Bass staff contains a melodic line with a slur over the final two notes.

©1995mjstarke

68

Bsn.

From Kantata 14 by JS BACH

Detailed description: This block contains the musical notation for measure 68. It consists of three staves. The top staff is in Treble clef with a key signature of one sharp (F#). The middle staff is labeled 'Bsn.' and is in Bass clef. The bottom staff is in Bass clef. The Treble staff contains a melodic line with eighth notes. The Bassoon staff contains a rhythmic accompaniment with eighth notes and rests. The Cello/Bass staff contains a steady eighth-note accompaniment.

©1995mjstarke

69

Bsn.

From Kantata 14 by JS BACH

Detailed description: This block contains the musical notation for measure 69. It consists of three staves. The top staff is in Treble clef with a key signature of one sharp. The middle staff is labeled 'Bsn.' and is in Bass clef. The bottom staff is in Bass clef. The Treble staff contains a complex melodic line with sixteenth notes and slurs. The Bassoon staff contains a melodic line with eighth notes. The Cello/Bass staff contains a rhythmic accompaniment with eighth notes and rests.

71

©1995mjstarke

Bsn.

Aria :Unser Starke heisst zu schwach

From Kantata 14 by JS BACH

Arranged and Sequenced by MJ Starke

E-mail mjstarke@ix.netcom.com

73

Bsn.

Aria :Unser Starke heisst zu schwach

From Kantata 14 by JS BACH

Arranged and Sequenced by MJ Starke

E-mail mjstarke@ix.netcom.com

75

Bsn.

From Kantata 14 by JS BACH

Arranged and Sequenced by MJ Starke

E-mail mjstarke@ix.netcom.com

76

Bsn.

From Kantata 14 by JS BACH

Arranged and Sequenced by MJ Starke

E-mail mjstarke@ix.netcom.com

78

©1995mjstarke

Bsn.

From Kantata 14 by JS BACH

Arranged and Sequenced by MJ Starke

E-mail mjstarke@ix.netcom.com

80
©1995mjstarke

Bsn.

Detailed description: This system contains two measures of music. The top staff is in treble clef with a key signature of one flat (Bb). Measure 80 features a dotted quarter note followed by an eighth note, then a quarter note. Measure 81 continues with a quarter note, a dotted quarter note, and a quarter note. The bottom staff is in bass clef and contains a continuous eighth-note accompaniment pattern throughout both measures.

82
©1995mjstarke

Bsn.

Detailed description: This system contains two measures. The top staff has a key signature of one flat. Measure 82 starts with a quarter note, followed by a dotted quarter note, and a quarter note. Measure 83 begins with a quarter note, followed by a triplet of eighth notes, and ends with a quarter note. A '3' with a slur is placed over the triplet. The bottom staff provides a consistent eighth-note accompaniment.

84
©1995mjstarke

Bsn.

Detailed description: This system contains two measures. The top staff has a key signature of one flat. Measure 84 starts with a quarter rest, followed by a quarter note, a dotted quarter note, and a quarter note. Measure 85 begins with a quarter rest, followed by a quarter note, a dotted quarter note, and a quarter note. The bottom staff continues with the eighth-note accompaniment.

86
©1995mjstarke

Bsn.

Detailed description: This system contains two measures. The top staff has a key signature of one flat. Measure 86 starts with a quarter note, followed by a dotted quarter note, and a quarter note. Measure 87 begins with a quarter note, followed by a dotted quarter note, and a quarter note. A '3' with a slur is placed over the first three notes of measure 87. The bottom staff continues with the eighth-note accompaniment.

88
©1995mjstarke

Bsn.

Detailed description: This system contains two measures. The top staff has a key signature of one flat. Measure 88 starts with a quarter note, followed by a dotted quarter note, and a quarter note. Measure 89 begins with a quarter note, followed by a dotted quarter note, and a quarter note. The bottom staff continues with the eighth-note accompaniment.

©1995mjstarke

90

Bsn.

©1995mjstarke

92

Bsn.

94

Bsn.

Aria :Unser Starke heisst zu schwach

From Kantata 14 by JS BACH

Arranged and Sequenced by MJ Starke

E-mail mjstarke@ix.netcom.com

96

Bsn.

Aria :Unser Starke heisst zu schwach

From Kantata 14 by JS BACH

Arranged and Sequenced by MJ Starke

E-mail mjstarke@ix.netcom.com

98

©1995mjstarke

Bsn.

From Kantata 14 by JS BACH

Arranged and Sequenced by MJ Starke

E-mail mjstarke@ix.netcom.com

©1995mjstarke

100

Bsn.

Aria :Unser Starke heisst zu schwach

From Kantata 14 by JS BACH

Arranged and Sequenced by MJ Starke

E-mail mjstarke@ix.netcom.com

©1995mjstarke

102

Bsn.

Aria :Unser Starke heisst zu schwach

From Kantata 14 by JS BACH

Arranged and Sequenced by MJ Starke

E-mail mjstarke@ix.netcom.com

103

©1995mjstarke

Bsn.

Aria :Unser Starke heisst zu schwach

From Kantata 14 by JS BACH

Arranged and Sequenced by MJ Starke

E-mail mjstarke@ix.netcom.com

Detailed description: This block contains the musical notation for measures 103 and 104. It is arranged in a system with five staves. The top staff is for the Bsn. (Bassoon), the second staff is for the vocal line 'Aria :Unser Starke heisst zu schwach', and the bottom three staves are for piano accompaniment. The music is in a key with one flat and a 3/4 time signature. The copyright notice '©1995mjstarke' and contact information 'E-mail mjstarke@ix.netcom.com' are included on the left side of the score.

104

©1995mjstarke

Bsn.

Aria :Unser Starke heisst zu schwach

From Kantata 14 by JS BACH

Arranged and Sequenced by MJ Starke

E-mail mjstarke@ix.netcom.com

Detailed description: This block contains the musical notation for measures 104 and 105. It is arranged in a system with five staves. The top staff is for the Bsn. (Bassoon), the second staff is for the vocal line 'Aria :Unser Starke heisst zu schwach', and the bottom three staves are for piano accompaniment. The music continues from the previous block. The copyright notice '©1995mjstarke' and contact information 'E-mail mjstarke@ix.netcom.com' are included on the left side of the score.

105

©1995mjstarke

Bsn.

Aria :Unser Starke heisst zu schwach

From Kantata 14 by JS BACH

Arranged and Sequenced by MJ Starke

E-mail mjstarke@ix.netcom.com

106

©1995mjstarke

Bsn.

Aria :Unser Starke heisst zu schwach

From Kantata 14 by JS BACH

Arranged and Sequenced by MJ Starke

E-mail mjstarke@ix.netcom.com

©1995mjstarke

108

From Kantata 14 by JS BACH

Arranged and Sequenced by MJ Starke

E-mail mjstarke@ix.netcom.com

©1995mjstarke

110

Bsn.

From Kantata 14 by JS BACH

Arranged and Sequenced by MJ Starke

E-mail mjstarke@ix.netcom.com

©1995mjstarke

112

Bsn.

From Kantata 14 by JS BACH

Arranged and Sequenced by MJ Starke

E-mail mjstarke@ix.netcom.com

©1995mjstarke

114

Bsn.

From Kantata 14 by JS BACH

Arranged and Sequenced by MJ Starke

E-mail mjstarke@ix.netcom.com

©1995mjstarke

116

Bsn.

Aria :Unser Starke heisst zu schwach

From Kantata 14 by JS BACH

Arranged and Sequenced by MJ Starke

E-mail mjstarke@ix.netcom.com

118

Bsn.

Aria :Unser Starke heisst zu schwach

From Kantata 14 by JS BACH

Arranged and Sequenced by MJ Starke

E-mail mjstarke@ix.netcom.com

120

Bsn.

Aria :Unser Starke heisst zu schwach

From Kantata 14 by JS BACH

Arranged and Sequenced by MJ Starke

E-mail mjstarke@ix.netcom.com

121

Bsn.

Aria :Unser Starke heisst zu schwach

From Kantata 14 by JS BACH

Arranged and Sequenced by MJ Starke

E-mail mjstarke@ix.netcom.com

123

Bsn.

Aria :Unser Starke heisst zu schwach

From Kantata 14 by JS BACH

Arranged and Sequenced by MJ Starke

E-mail mjstarke@ix.netcom.com

125

Bsn.

Aria :Unser Starke heisst zu schwach

From Kantata 14 by JS BACH

Arranged and Sequenced by MJ Starke

E-mail mjstarke@ix.netcom.com

126

Bsn.

Aria :Unser Starke heisst zu schwach

From Kantata 14 by JS BACH

Arranged and Sequenced by MJ Starke

E-mail mjstarke@ix.netcom.com

127

Bsn.

Aria :Unser Starke heisst zu schwach

From Kantata 14 by JS BACH

Arranged and Sequenced by MJ Starke

E-mail mjstarke@ix.netcom.com

128

Bsn.

Aria :Unser Starke heisst zu schwach

From Kantata 14 by JS BACH

Arranged and Sequenced by MJ Starke

E-mail mjstarke@ix.netcom.com

130

Bsn.

Aria :Unser Starke heisst zu schwach

From Kantata 14 by JS BACH

Arranged and Sequenced by MJ Starke

E-mail mjstarke@ix.netcom.com

132

Bsn.

Aria :Unser Starke heisst zu schwach

From Kantata 14 by JS BACH

Arranged and Sequenced by MJ Starke

E-mail mjstarke@ix.netcom.com

134

Bsn.

Aria :Unser Starke heisst zu schwach

From Kantata 14 by JS BACH

Arranged and Sequenced by MJ Starke

E-mail mjstarke@ix.netcom.com

136

$\text{♩} = 82,000038$ $\text{♪} = 67,000031$ $\text{♫} = 50,000000$

Bsn.

Aria :Unser Starke heisst zu schwach

From Kantata 14 by JS BACH

Arranged and Sequenced by MJ Starke

E-mail mjstarke@ix.netcom.com

Bach, Johann Sebastian - Cantatas

©1995mjstarke

♩ = 100,000000
20

25

30

36

41

48

54

59

63

67

2

V.S.

70 **6**

81

86

90 **4**

98

103

108

112 **3**

116 **18** ♩ = 82,000,000,000

Bach, Johann Sebastian - Cantatas

Bassoon

♩ = 100,000000



6



11



16



21



27



32



37



41



45



50



54



57



61



65



69



74



78



82



86



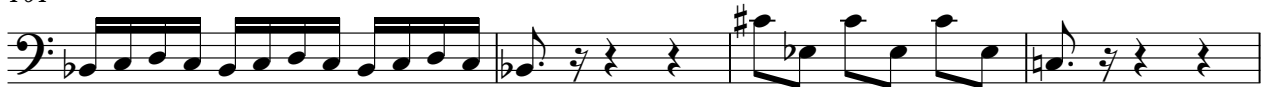
90



95



101



105



110



114



118



123



128



132



135

♩ = 82,000038 ♪ = 67,00003♩ = 50,000000



72 **19**

95 **3**

102

107 **10**

121

126

130

134 $\text{♩} = 82,000000 \text{ } \text{♩} = 50,000000$

Bach, Johann Sebastian - Cantatas
From Kantata 14 by JS BACH

$\text{♩} = 100,000000$

6

10

15

20

24

28

32

37

42

V.S.

Bach, Johann Sebastian - Cantatas
Arranged and Sequenced by MJ Starke

♩ = 100,000000



34

38

43

48

53

56

59

63

8

75

15

94

98

Musical staff for measure 98, featuring a bass clef and a 3/4 time signature. The staff contains a sequence of eighth and quarter notes with various accidentals (flats and naturals).

102

Musical staff for measure 102, featuring a bass clef and a 3/4 time signature. The staff contains a sequence of eighth and quarter notes with various accidentals, including a sharp and a flat.

107

Musical staff for measure 107, featuring a bass clef and a 3/4 time signature. The staff contains a sequence of eighth and quarter notes with various accidentals.

112

Musical staff for measure 112, featuring a bass clef and a 3/4 time signature. The staff contains a sequence of eighth and quarter notes with various accidentals.

117

Musical staff for measure 117, featuring a bass clef and a 3/4 time signature. The staff contains a sequence of eighth and quarter notes with various accidentals.

121

Musical staff for measure 121, featuring a bass clef and a 3/4 time signature. The staff contains a sequence of eighth and quarter notes with various accidentals.

125

Musical staff for measure 125, featuring a bass clef and a 3/4 time signature. The staff contains a sequence of eighth and quarter notes with various accidentals.

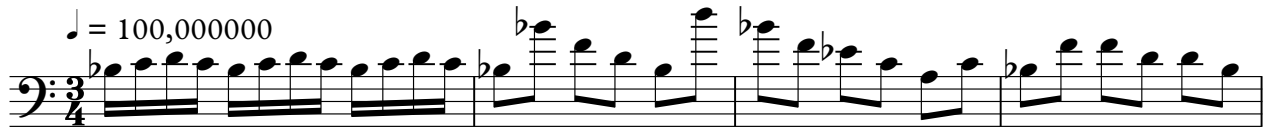
129

Musical staff for measure 129, featuring a bass clef and a 3/4 time signature. The staff contains a sequence of eighth and quarter notes with various accidentals.

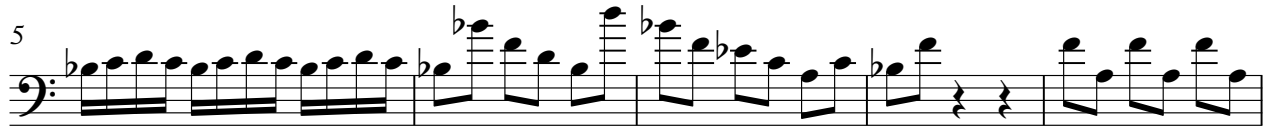
134

Musical staff for measure 134, featuring a bass clef and a 3/4 time signature. The staff contains a sequence of eighth and quarter notes with various accidentals. Above the staff, there are two tempo markings: $\text{♩} = 82,000038$ and $\text{♩} = 67,000030$.

♩ = 100,000000



5



10



15



20



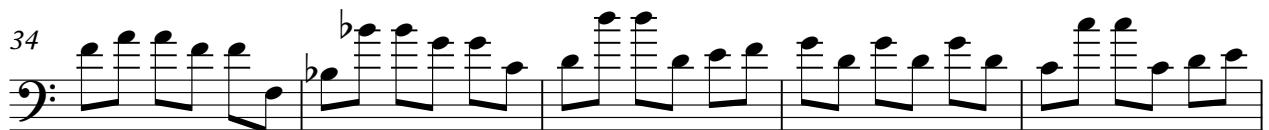
25



29



34



39



44



49

53

56

59

63

8

74

79

15

97

102

106

