

Bach, Johann Sebastian - Partita No. 1 in B minor for

00:00:04:02
2.1,00
A

♩ = 250,000000 ♩ = 76,999977

Solo Violin

3
Solo Violin

5
Solo Violin

7
Solo Violin

9
Solo Violin

11
Solo Violin

13
Solo Violin

15
Solo Violin

17
Solo Violin

19
Solo Violin

Copyright © 1996 by David J. Grossman

21
Solo Violin

23
Solo Violin

25
Solo Violin

27
Solo Violin

29
Solo Violin

31
Solo Violin

33
Solo Violin

35
Solo Violin

37
Solo Violin

39
Solo Violin

41
Solo Violin

00:01:19:24
B

00:01:57:20
3/8
B'

43

Solo Violin

45

Solo Violin

47

Solo Violin

48

Solo Violin

♩ = 38,000008

Solo Violin

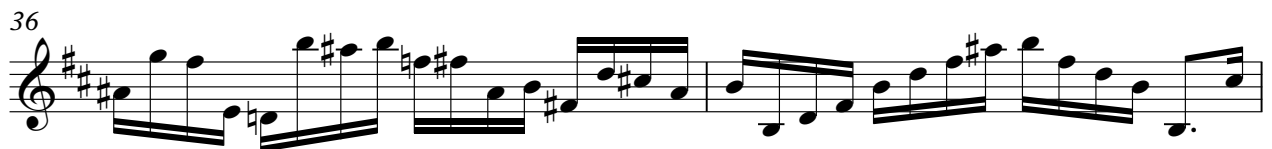
Bach, Johann Sebastian - Partita No. 1 in B minor for

♩ = 250,000000 ♩ = 76,999977



Copyright © 1996 by David J. Grossman

V.S.



Solo Violin

42



44



46



48



$\text{♩} = 38,000008$