

Bach, Johann Sebastian - Suite No. 1 in G major for Cello

♩ = 80,000000

Solo Cello

2

Solo Cello

3

Solo Cello

4

Solo Cello

5

Solo Cello

6

Solo Cello

7

Solo Cello

8

Solo Cello

9

Solo Cello

10

Solo Cello

11  
Solo Cello



12  
Solo Cello



13  
Solo Cello



14  
Solo Cello



15  
Solo Cello



16  
Solo Cello



17  
Solo Cello



18  
Solo Cello



19  
Solo Cello



20  
Solo Cello



21  
Solo Cello



22 Solo Cello 

23 Solo Cello 


24 Solo Cello 

25 Solo Cello 

26 Solo Cello 

27 Solo Cello 

28 Solo Cello 

29 Solo Cello 

30 Solo Cello 

31 Solo Cello 

32

Solo Cello

-----

33

Solo Cello

-----

34

Solo Cello

-----

35

Solo Cello

-----

36

Solo Cello

-----

37

Solo Cello

-----

38

Solo Cello

-----

39

Solo Cello

40

Solo Cello

41

Solo Cello

42

Solo Cello

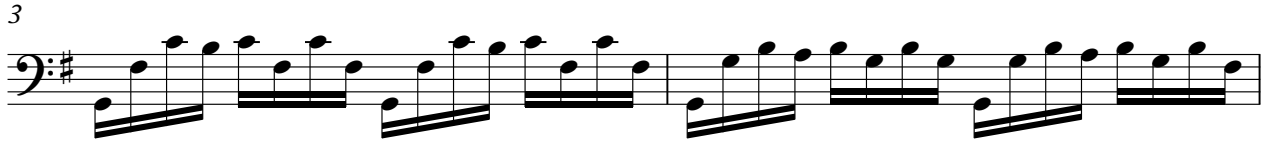
-----

Johann Sebastian Bach (1685-1750)

Solo Cello

Bach, Johann Sebastian - Suite No. 1 in G major for Cello

♩ = 80,000000



V.S.

21  $\text{♩} = 26,999900$

23

25

27

29

31

33

35

37

39

Solo Cello

41







Johann Sebastian Bach (1685-1750) Bach, Johann Sebastian - Suite No. 1 in G major for Cello

♩ = 80,000000 **21**      ♩ = 20,000,000,977 **20**

4/4