

Bach, Johann Sebastian - Suite No. 1 in G major for Cello

00:00:04:07
2.1,00
A

♩ = 250,000000 ♩ = 76,999977

Johann Sebastian Bach (1685-1750)

Solo Cello

3
Solo Cello

4
Solo Cello

5
Solo Cello

6
Solo Cello

7
Solo Cello

8
Solo Cello

9
Solo Cello

10

Solo Cello

11

Solo Cello

12

Solo Cello

13

Solo Cello

14

Solo Cello

15

Solo Cello

16

Solo Cello

Johann Sebastian Bach (1685-1750)

17

Solo Cello

Johann Sebastian Bach (1685-1750)

18

Solo Cello

19

Solo Cello

20

Solo Cello

21

Solo Cello

22

Solo Cello

23

Solo Cello

24

Solo Cello

25

Solo Cello

26

Solo Cello

37

Solo Cello



Musical notation for measure 37, Solo Cello part. The staff shows a sequence of eighth notes in a descending pattern, starting on G4 and ending on G3.

38

Solo Cello



Musical notation for measure 38, Solo Cello part. The staff shows a sequence of eighth notes, with a sharp sign indicating a change in pitch or a specific fingering.

39

Solo Cello



Musical notation for measure 39, Solo Cello part. The staff shows a sequence of eighth notes, with a flat sign indicating a change in pitch.


Johann Sebastian Bach (1685-1750)



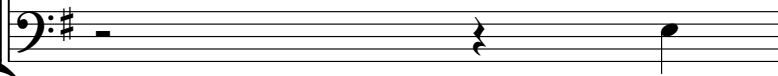
Musical notation for measure 39, lower parts. The staff shows a sequence of notes, including a sharp sign and a flat sign.

40

Solo Cello



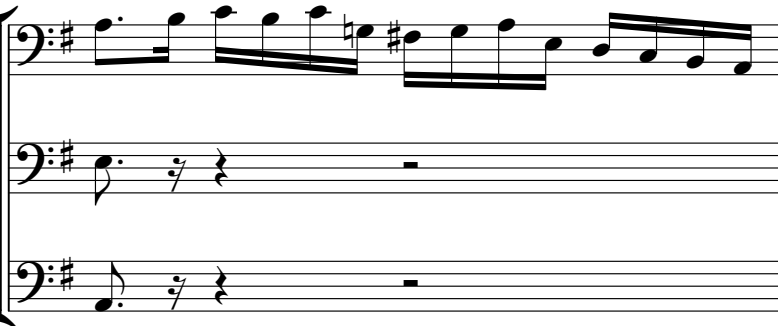
Musical notation for measure 40, Solo Cello part. The staff shows a sequence of eighth notes, with a sharp sign indicating a change in pitch.



Musical notation for measure 40, lower parts. The staff shows a sequence of notes, including a sharp sign and a flat sign.

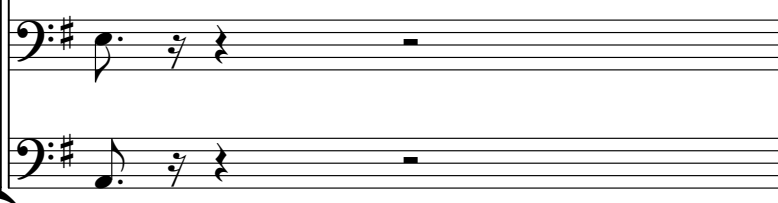
41

Solo Cello



Musical notation for measure 41, Solo Cello part. The staff shows a sequence of eighth notes, with a sharp sign indicating a change in pitch.

Johann Sebastian Bach (1685-1750)



Musical notation for measure 41, lower parts. The staff shows a sequence of notes, including a sharp sign and a flat sign.

42

Solo Cello



Musical notation for measure 42, Solo Cello part. The staff shows a sequence of eighth notes, with a sharp sign indicating a change in pitch.


43

Solo Cello



Musical notation for measure 43, Solo Cello part. The staff shows a sequence of eighth notes, with a sharp sign indicating a change in pitch.

44
Solo Cello




Musical notation for measure 44, Solo Cello part. The staff is in bass clef with a key signature of one sharp (F#). The melody consists of eighth notes: G2, A2, B2, C3, D3, E3, F#3, G3, A3, B3, C4, D4, E4, F#4, G4.

45
Solo Cello



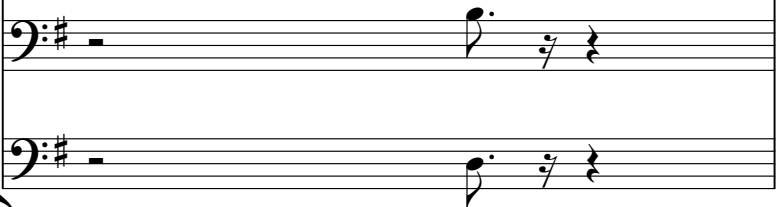
Musical notation for measure 45, Solo Cello part. The staff is in bass clef with a key signature of one sharp (F#). The melody consists of eighth notes: A3, B3, C4, D4, E4, F#4, G4, A4, B4, C5, D5, E5, F#5, G5.

46
Solo Cello



Musical notation for measure 46, Solo Cello part. The staff is in bass clef with a key signature of one sharp (F#). The melody consists of eighth notes: A3, B3, C4, D4, E4, F#4, G4, A4, B4, C5, D5, E5, F#5, G5. A fermata is placed over the final note G5.

Johann Sebastian Bach (1685-1750)



Musical notation for measure 46, lower parts. The staff is in bass clef with a key signature of one sharp (F#). It shows a whole rest followed by a quarter rest, a quarter note G3, and a quarter rest.

47
Solo Cello



Musical notation for measure 47, Solo Cello part. The staff is in bass clef with a key signature of one sharp (F#). The melody consists of eighth notes: A3, B3, C4, D4, E4, F#4, G4, A4, B4, C5, D5, E5, F#5, G5.

48
Solo Cello



Musical notation for measure 48, Solo Cello part. The staff is in bass clef with a key signature of one sharp (F#). The melody consists of eighth notes: A3, B3, C4, D4, E4, F#4, G4, A4, B4, C5, D5, E5, F#5, G5.

49
Solo Cello



Musical notation for measure 49, Solo Cello part. The staff is in bass clef with a key signature of one sharp (F#). The melody consists of eighth notes: A3, B3, C4, D4, E4, F#4, G4, A4, B4, C5, D5, E5, F#5, G5.

00:02:35.19
50.1,00
B'

50
Solo Cello



Musical notation for measure 50, Solo Cello part. The staff is in bass clef with a key signature of one sharp (F#). The melody consists of eighth notes: A3, B3, C4, D4, E4, F#4, G4, A4, B4, C5, D5, E5, F#5, G5. A fermata is placed over the final note G5.

51
Solo Cello



Musical notation for measure 51, Solo Cello part. The staff is in bass clef with a key signature of one sharp (F#). The melody consists of eighth notes: A3, B3, C4, D4, E4, F#4, G4, A4, B4, C5, D5, E5, F#5, G5.

52
Solo Cello



Musical notation for measure 52, Solo Cello part. The staff is in bass clef with a key signature of one sharp (F#). The melody consists of eighth notes: A3, B3, C4, D4, E4, F#4, G4, A4, B4, C5, D5, E5, F#5, G5.

53

Solo Cello

Musical notation for measure 53, Solo Cello part. The staff is in bass clef with a key signature of one sharp (F#). The melody consists of eighth and sixteenth notes.

54

Solo Cello

Musical notation for measure 54, Solo Cello part. The staff is in bass clef with a key signature of one sharp (F#). The melody continues with eighth and sixteenth notes.

55

Solo Cello

Musical notation for measure 55, Solo Cello part. The staff is in bass clef with a key signature of one sharp (F#). The melody features a trill on the final note. A dashed line indicates the continuation of the piece.

Johann Sebastian Bach (1685-1750)

56

Solo Cello

Musical notation for measure 56, Solo Cello part. The staff is in bass clef with a key signature of one sharp (F#). The melody continues with eighth and sixteenth notes. A dashed line indicates the continuation of the piece.

57

Solo Cello

Musical notation for measure 57, Solo Cello part. The staff is in bass clef with a key signature of one sharp (F#). The melody continues with eighth and sixteenth notes. A dashed line indicates the continuation of the piece.

Johann Sebastian Bach (1685-1750)

58

Solo Cello

Musical notation for measure 58, Solo Cello part. The staff is in bass clef with a key signature of one sharp (F#). The melody continues with eighth and sixteenth notes.

59

Solo Cello

Musical notation for measure 59, Solo Cello part. The staff is in bass clef with a key signature of one sharp (F#). The melody continues with eighth and sixteenth notes.

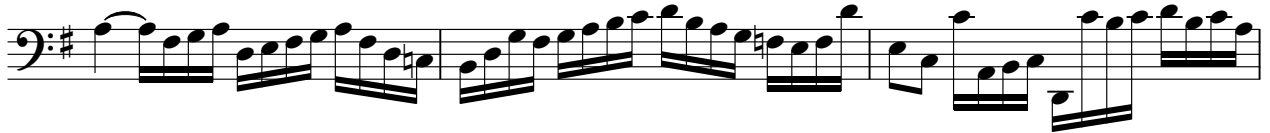
28



31



34



37



40



42



44



47



49



52



55



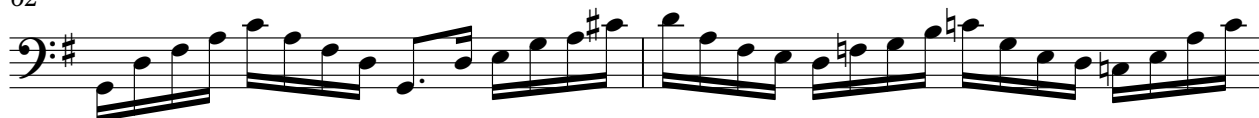
57



59



62



64



Bach, Johann Sebastian - Suite No. 1 in G major for C

♩ = 250,000000 = 76,999977

13

13

19

13

4

39

4

3

50

4

57

4

3

Bach, Johann Sebastian - Suite No. 1 in G major for Cello
Johann Sebastian Bach (1685-1750)

♩ = 250,000000 = 76,999977

13

A musical staff in bass clef with a key signature of one sharp (F#) and a 4/4 time signature. Measure 13 is a whole rest. Measure 14 contains a quarter note G4 followed by a quarter rest. Measure 15 is a whole rest. Measure 16 contains a quarter note G4 followed by a quarter rest. Measure 17 is a whole rest. Measure 18 contains a quarter note G4 followed by a quarter rest.

19

13

6

A musical staff in bass clef with a key signature of one sharp (F#) and a 4/4 time signature. Measure 19 is a whole rest. Measure 20 contains a quarter note G4 followed by a quarter rest. Measure 21 is a whole rest. Measure 22 contains a quarter note G4 followed by a quarter rest. Measure 23 is a whole rest. Measure 24 contains a quarter note G4 followed by a quarter rest.

41

4

8

A musical staff in bass clef with a key signature of one sharp (F#) and a 4/4 time signature. Measure 41 contains a quarter note G4 followed by a quarter rest. Measure 42 is a whole rest. Measure 43 contains a quarter note G4 followed by a quarter rest. Measure 44 is a whole rest. Measure 45 contains a quarter note G4 followed by a quarter rest. Measure 46 contains a quarter note G4 followed by a quarter rest.

56

4

3

A musical staff in bass clef with a key signature of one sharp (F#) and a 4/4 time signature. Measure 56 is a whole rest. Measure 57 contains a quarter note G4 followed by a quarter rest. Measure 58 is a whole rest. Measure 59 contains a quarter note G4 followed by a quarter rest. Measure 60 is a whole rest. Measure 61 contains a quarter note G4 followed by a quarter rest.