

Bach, Johann Sebastian - Suite No. 2 in D minor for Cello

♩ = 45,000011

Solo Cello

3

5

7

9

11

13

15

17

19

21
Solo Cello

23
Solo Cello

25
Solo Cello

27
Solo Cello

29
Solo Cello

31
Solo Cello

33
Solo Cello

35
Solo Cello

37
Solo Cello

39
Solo Cello

41
Solo Cello

43

Solo Cello

45

Solo Cello

46

Solo Cello

47

Solo Cello

Johann Sebastian Bach (1685-1750)

$\text{♩} = 20,000,009954$

49

Solo Cello

$\text{♩} = 45,000011$

51

Solo Cello

53

Solo Cello

Johann Sebastian Bach (1685-1750)

55

Solo Cello

57

Solo Cello




59

Solo Cello

Johann Sebastian Bach (1685-1750)

Six Suites for Solo Cello

$\text{♩} = 24,000000$



Solo Cello

Bach, Johann Sebastian - Suite No. 2 in D minor for Cello

♩ = 45,000011



V.S.

34



37



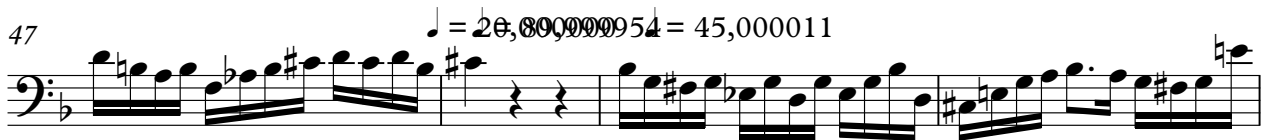
40



44



47



51



54



57



59



Bach, Johann Sebastian - Suite No. 2 in D minor for C

♩ = 45,000011 **47** ♩ = 20,000000954 ♩ = 45,000011 **5**

47 5

55 **4** ♩ = 24,000000

4

Johann Sebastian Bach (1685-1750) Bach, Johann Sebastian - Suite No. 2 in D minor for 5

♩ = 45,000011 ♩ = 20,00000954 ♩ = 45,000011

47 **5**



55

4 ♩ = 24,000000



Six Suites for Solo Cello

Bach, Johann Sebastian - Suite No. 2 in D minor for Cello

♩ = 45,000011 ♩ = 20,000000 54 ♩ = 45,000011 ♩ = 24,000000

47 **14**

47 14