

Bach, Johann Sebastian - Suite No. 3 in C major for Cello

♩ = 250,000000

♩ = 50,000000

Solo Cello

00:00:04:27
2.1,00
A

2 Solo Cello

00:00:12:03
3.3,00
*

3 Solo Cello

4 Solo Cello

5 Solo Cello

6 Solo Cello

Johann Sebastian Bach (1685-1750)

Six Suites for Solo Cello

7

Solo Cello

Johann Sebastian Bach (1685-1750)

8

Solo Cello

Johann Sebastian Bach (1685-1750)

9

Solo Cello

10

Solo Cello

11

Solo Cello

12

Solo Cello

13

Solo Cello

Johann Sebastian Bach (1685-1750)

20

Solo Cello

21

Solo Cello

22

Solo Cello

23

Solo Cello

24

Solo Cello

25

Solo Cello

26

Solo Cello

27


Solo Cello

28

Solo Cello


29

Solo Cello

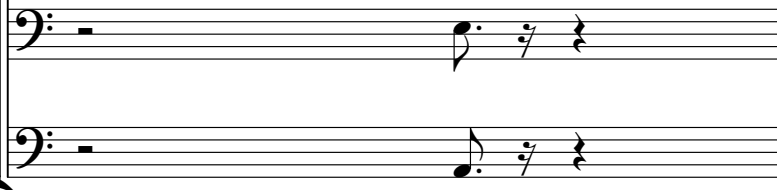


30

Solo Cello



Johann Sebastian Bach (1685-1750)



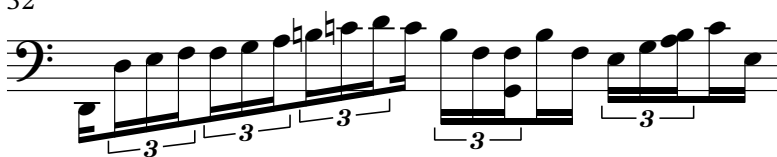
31

Solo Cello



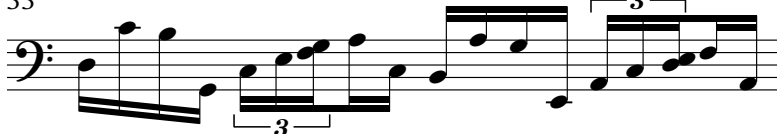
32

Solo Cello



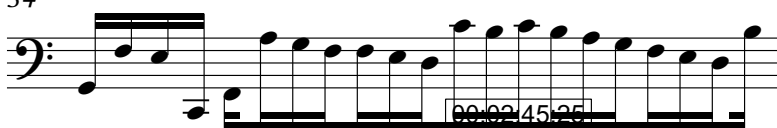
33

Solo Cello



34

Solo Cello



00:02:45:25
35,3,25
*


35

Solo Cello



36

Solo Cello



Solo Cello

Johann Sebastian Bach (1685-1750)

Six Suites for Solo Cello

00:02:57.16
38.1,00
B'

Solo Cello

Solo Cello

Solo Cello

Solo Cello

Solo Cello

Solo Cello

Johann Sebastian Bach (1685-1750)

Solo Cello

The image displays a musical score for Solo Cello, consisting of seven systems of staves. The first system (measures 37-38) includes a time signature box with the text '00:02:57.16', '38.1,00', and 'B''. The score features various rhythmic patterns, including sixteenth-note triplets and a 7/8 time signature in measure 42. The notation is presented in a clean, black-and-white format with standard musical symbols.

Solo Cello

Bach, Johann Sebastian - Suite No. 3 in C major for Cello

♩ = 250,000000 = 50,000000

Measures 1-3 of the Solo Cello part. The music begins with a rest in measure 1, followed by a series of eighth notes in measures 2 and 3. Measure 2 contains two triplet markings over eighth notes.

Measures 4-5 of the Solo Cello part. Measure 4 continues the eighth-note pattern with a triplet marking. Measure 5 features a triplet of eighth notes followed by a quarter note.

Measures 6-7 of the Solo Cello part. Measure 6 starts with a sharp sign (F#) and contains eighth notes with triplet markings. Measure 7 continues with eighth notes and triplet markings.

Measures 8-9 of the Solo Cello part. Measure 8 begins with a sharp sign (F#) and features eighth notes with triplet markings. Measure 9 continues with eighth notes and triplet markings.

Measures 10-11 of the Solo Cello part. Measure 10 contains eighth notes with triplet markings. Measure 11 continues with eighth notes and triplet markings.

Measures 12-13 of the Solo Cello part. Measure 12 starts with a sharp sign (F#) and contains eighth notes with triplet markings. Measure 13 continues with eighth notes and triplet markings.

Measures 14-15 of the Solo Cello part. Measure 14 contains eighth notes with triplet markings. Measure 15 continues with eighth notes and triplet markings.

Measures 16-17 of the Solo Cello part. Measure 16 contains eighth notes with triplet markings. Measure 17 continues with eighth notes and triplet markings.

Measures 18-19 of the Solo Cello part. Measure 18 starts with a sharp sign (F#) and contains eighth notes with triplet markings. Measure 19 continues with eighth notes and triplet markings.

Measures 20-21 of the Solo Cello part. Measure 20 starts with a sharp sign (F#) and contains eighth notes with triplet markings. Measure 21 continues with eighth notes and triplet markings.

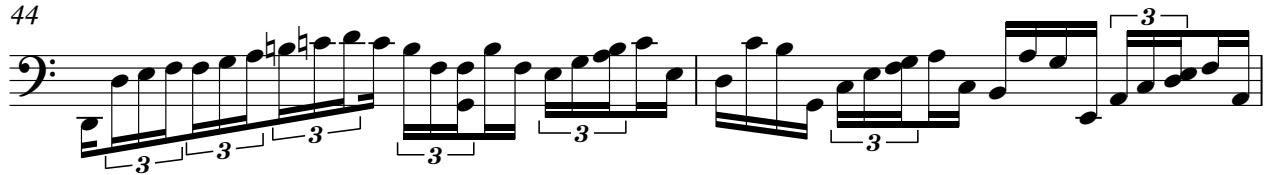
Musical score for Solo Cello, measures 22-40. The score is written in bass clef and features a complex rhythmic pattern of eighth and sixteenth notes, often grouped in triplets. The key signature is one sharp (F#). The score is divided into systems of three measures each, with measure numbers 22, 24, 26, 28, 30, 32, 34, 36, 38, and 40 indicated at the beginning of each system. The notation includes various accidentals (sharps, naturals, flats) and dynamic markings. A sextuplet (6) is used in measure 34. The piece concludes with a final triplet in measure 40.

Solo Cello

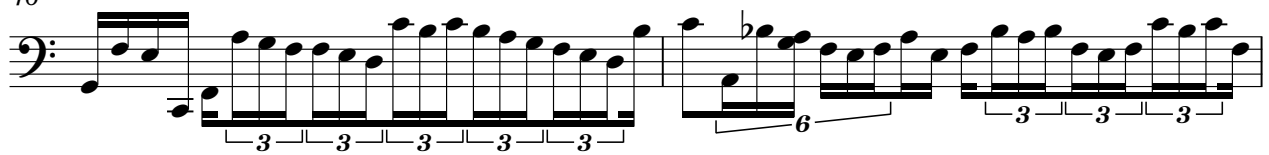
42



44



46

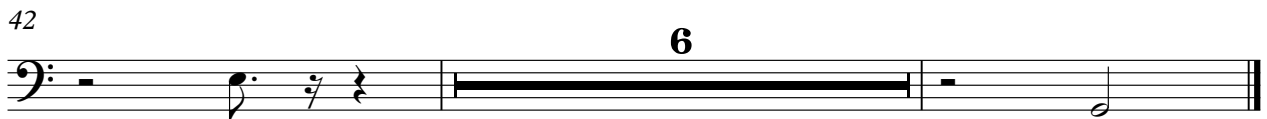
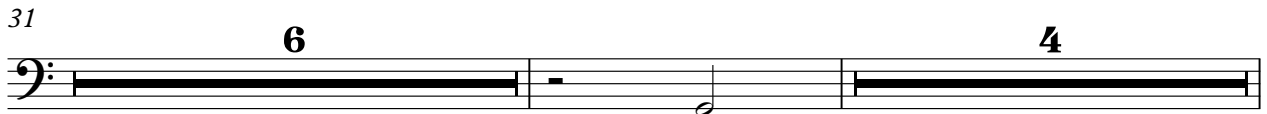
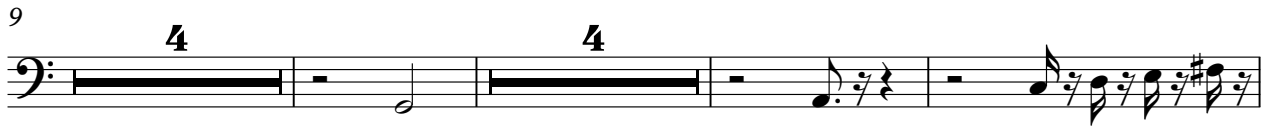
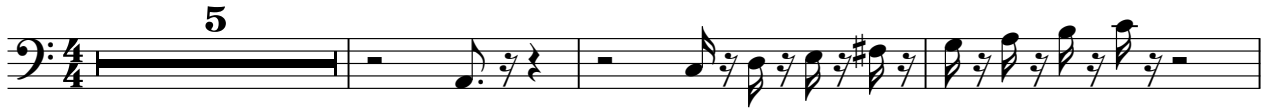


48



Bach, Johann Sebastian - Suite No. 3 in C major for C

♩ = 250,000000 ♩ = 50,000000



Copyright © 1996 by David J. Grossman

Johann Sebastian Bach (1685-1750) Bach, Johann Sebastian - Suite No. 3 in C major for 5

♩ = 250,000000 ♪ = 50,000000



Copyright © 1996 by David J. Grossman

♩ = 250,000000 ♩ = 50,000000

5 **11**

19

18 **11**