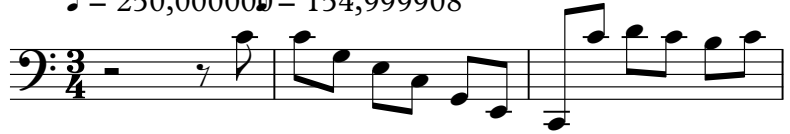


Bach, Johann Sebastian - Suite No. 3 in C major for Cello

00:00:03:23
2.1,00
A

$\text{♩} = 250,000000 = 154,999908$

Solo Cello



4

Solo Cello



7

Solo Cello



10

Solo Cello



13

Solo Cello



16

Solo Cello



19

Solo Cello



22

Solo Cello



25

Solo Cello



28

Solo Cello



31

Solo Cello



Measure 31: Bass clef, key signature of one flat (B-flat). The melody consists of eighth notes: B2, A2, G2, F2, E2, D2, C2, B1. There are two flats (B-flat and E-flat) above the staff.

34

Solo Cello



Measure 34: Bass clef, key signature of one flat. The melody consists of eighth notes: B2, A2, G2, F2, E2, D2, C2, B1. There are two flats (B-flat and E-flat) above the staff.

37

Solo Cello



Measure 37: Bass clef, key signature of one flat. The melody consists of eighth notes: B2, A2, G2, F2, E2, D2, C2, B1. There are two flats (B-flat and E-flat) above the staff. Two timecode boxes are overlaid on the staff: the first contains "00:00:49.40" and "41.1,00 *", and the second contains "00:00:50.45" and "42.1,00 A'".

40


Solo Cello



Measure 40: Bass clef, key signature of one flat. The melody consists of eighth notes: B2, A2, G2, F2, E2, D2, C2, B1. There are two flats (B-flat and E-flat) above the staff.

43

Solo Cello



Measure 43: Bass clef, key signature of one flat. The melody consists of eighth notes: B2, A2, G2, F2, E2, D2, C2, B1. There are two flats (B-flat and E-flat) above the staff.

46

Solo Cello



Measure 46: Bass clef, key signature of one flat. The melody consists of eighth notes: B2, A2, G2, F2, E2, D2, C2, B1. There are two flats (B-flat and E-flat) above the staff.

49

Solo Cello



Measure 49: Bass clef, key signature of one flat. The melody consists of eighth notes: B2, A2, G2, F2, E2, D2, C2, B1. There are two flats (B-flat and E-flat) above the staff.

52

Solo Cello



Measure 52: Bass clef, key signature of one flat. The melody consists of eighth notes: B2, A2, G2, F2, E2, D2, C2, B1. There are two flats (B-flat and E-flat) above the staff.

55

Solo Cello



Measure 55: Bass clef, key signature of one flat. The melody consists of eighth notes: B2, A2, G2, F2, E2, D2, C2, B1. There are two flats (B-flat and E-flat) above the staff.

58

Solo Cello



Measure 58: Bass clef, key signature of one flat. The melody consists of eighth notes: B2, A2, G2, F2, E2, D2, C2, B1. There are two flats (B-flat and E-flat) above the staff.

61

Solo Cello



Measure 61: Bass clef, key signature of one flat. The melody consists of eighth notes: B2, A2, G2, F2, E2, D2, C2, B1. There are two flats (B-flat and E-flat) above the staff.

64

Solo Cello

67

Solo Cello

70

Solo Cello

73

Solo Cello

76

Solo Cello

79

Solo Cello

82

Solo Cello

85

Solo Cello

88

Solo Cello

91

Solo Cello

94

Solo Cello

97

Solo Cello



100

Solo Cello



103

Solo Cello



106

Solo Cello



109

Solo Cello



112

Solo Cello



115

Solo Cello



118

Solo Cello



121

Solo Cello



124

Solo Cello

Johann Sebastian Bach (1685-1750)

Six Suites for Solo Cello

127

Solo Cello

130

Solo Cello

133

Solo Cello

136

Solo Cello

139

Solo Cello

142

Solo Cello

145

Solo Cello

148

Solo Cello

151

Solo Cello



Musical notation for measure 151, Solo Cello part. The notation is on a single bass clef staff, showing a sequence of eighth notes: G2, A2, B2, C3, D3, E3, F3, G3, A3, B3, C4, D4, E4, F4, G4, A4, B4, C5.

154

Solo Cello



Musical notation for measure 154, Solo Cello part. The notation is on a single bass clef staff, showing a sequence of eighth notes: G2, A2, B2, C3, D3, E3, F3, G3, A3, B3, C4, D4, E4, F4, G4, A4, B4, C5.

157

Solo Cello



Musical notation for measure 157, Solo Cello part. The notation is on a single bass clef staff, showing a sequence of eighth notes: G2, A2, B2, C3, D3, E3, F3, G3, A3, B3, C4, D4, E4, F4, G4, A4, B4, C5.

160

Solo Cello



Musical notation for measure 160, Solo Cello part. The notation is on a single bass clef staff, showing a sequence of eighth notes: G2, A2, B2, C3, D3, E3, F3, G3, A3, B3, C4, D4, E4, F4, G4, A4, B4, C5.

163

Solo Cello



Musical notation for measure 163, Solo Cello part. The notation is on a single bass clef staff, showing a sequence of eighth notes: G2, A2, B2, C3, D3, E3, F3, G3, A3, B3, C4, D4, E4, F4, G4, A4, B4, C5.

166


Solo Cello



Musical notation for measure 166, Solo Cello part. The notation is on a single bass clef staff, showing a sequence of eighth notes: G2, A2, B2, C3, D3, E3, F3, G3, A3, B3, C4, D4, E4, F4, G4, A4, B4, C5.

168

Solo Cello



Musical notation for measure 168, Solo Cello part. The notation is on a single bass clef staff, showing a sequence of eighth notes: G2, A2, B2, C3, D3, E3, F3, G3, A3, B3, C4, D4, E4, F4, G4, A4, B4, C5.

Johann Sebastian Bach (1685-1750)

Six Suites for Solo Cello

$\text{♩} = 250,000000 = 154,999908$



52



57



62



67



72



77



83



88



93



98



103



108



113



118



123



129



134



139



144



149



V.S.

Bach, Johann Sebastian - Suite No. 3 in C major for C

♩ = 250,000000 ♩ = 154,999908


124 **43**

The image shows a musical staff in bass clef with a 3/4 time signature. It contains two measures of music, each consisting of a single whole note. The first measure is marked with a tempo of 250,000000 and a measure number of 124. The second measure is marked with a tempo of 154,999908 and a measure number of 43. The staff ends with a repeat sign.

Johann Sebastian Bach (1685-1750) Bach, Johann Sebastian - Suite No. 3 in C major for 5

♩ = 250,000000 ♩ = 154,999908

124 **43**



♩ = 250,000000 ♩ = 154,999908

124 **43**

The image shows a musical staff in bass clef with a 3/4 time signature. The first measure contains a whole note C2 (two ledger lines below the staff). Above the first measure is the tempo marking '♩ = 250,000000' and the number '124'. The second measure contains a whole note C2. Above the second measure is the tempo marking '♩ = 154,999908' and the number '43'. The staff ends with a double bar line.