

Bach, Johann Sebastian - Suite No. 5 in C minor for Cello

00:00:04:02
2.1,00
A

♩ = 250,000000 ♩ = 85,000046

Solo Cello

Two staves of music in C minor, 4/4 time. The first staff contains the melodic line, and the second staff contains the bass line. Measure 1 has a whole rest in the first staff and a whole note chord in the second. Measure 2 has a half note in the first staff and a half note chord in the second.

Solo Cello

3

Two staves of music. Measure 3 has a half note in the first staff and a half note chord in the second. Measure 4 has a half note in the first staff and a half note chord in the second.

Solo Cello

5

Two staves of music. Measure 5 has a half note in the first staff and a half note chord in the second. Measure 6 has a half note in the first staff and a half note chord in the second.

Solo Cello

7

Two staves of music. Measure 7 has a half note in the first staff and a half note chord in the second. Measure 8 has a half note in the first staff and a half note chord in the second.

Solo Cello

9

Two staves of music. Measure 9 has a half note in the first staff and a half note chord in the second. Measure 10 has a half note in the first staff and a half note chord in the second.

Copyright © 1996 by David J. Grossman

11

Solo Cello

13

Solo Cello

15

Solo Cello

17

Solo Cello

00:00:54:25
20.1,00
A'

19

Solo Cello

21

Solo Cello

23

Solo Cello



25

Solo Cello



27

Solo Cello



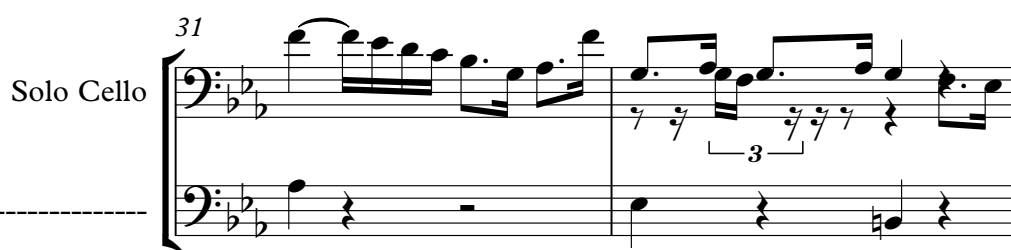
29

Solo Cello



31

Solo Cello



33

Solo Cello



Solo Cello

00:01:45:18
38.1,00
B

Solo Cello

Solo Cello

Solo Cello

Solo Cello

3

Solo Cello

3

Solo Cello

Solo Cello

49

3

Solo Cello

50

3

Solo Cello

51

Solo Cello

53

00:02:36:11
56.1,00
B'

Solo Cello

55

Solo Cello

57

Solo Cello

59

72

Solo Cello

The image shows a musical score for a solo cello. It consists of two staves. The top staff is a five-line staff with a bass clef and a key signature of one flat (B-flat). It contains a whole rest in the first measure and a half note in the second measure. The bottom staff is also a five-line staff with a bass clef and a key signature of one flat. It contains a complex rhythmic pattern in the first measure, followed by a half note in the second measure. A dashed horizontal line is drawn across the bottom staff, starting from the left edge of the page and ending at the first measure line.

Solo Cello

Bach, Johann Sebastian - Suite No. 5 in C minor for Cello

♩ = 250,000000 ♩ = 85,000046

6

12

15

18

24

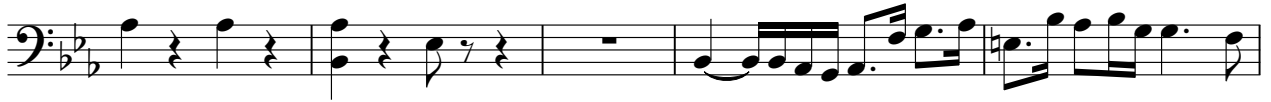
30

33

36

40

43



48



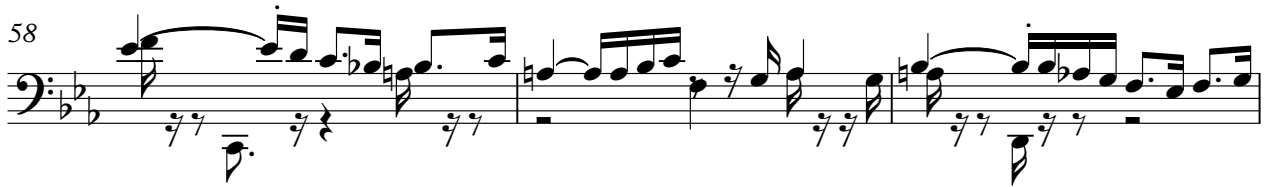
50



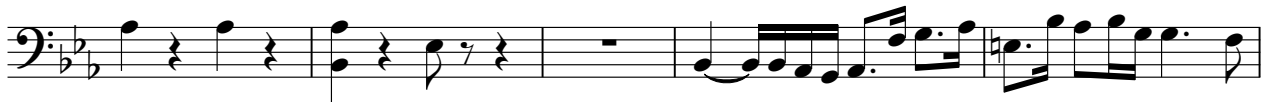
54



58



61



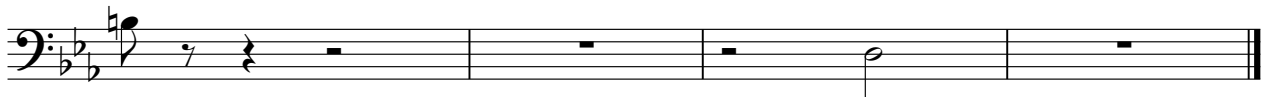
66



68



70



Bach, Johann Sebastian - Suite No. 5 in C minor for C

♩ = 250,000000 ♩ = 85,000046

5

8

11

16

21

24

27

30

35

Copyright © 1996 by David J. Grossman

