

Bach, Johann Sebastian - Suite No. 5 in C minor for Cello

00:00:04:16  
2.1,00  
A

♩ = 250,000000 ♩ = 140,000137

Solo Cello

Two staves of music in C minor, 3/2 time. The first staff (treble clef) contains a whole rest followed by a quarter rest, then a quarter note G2, and a half note G2. The second staff (bass clef) contains a whole rest followed by a quarter rest, then a quarter note G2, and a half note G2.

Solo Cello

3

Two staves of music. Measure 3: Treble staff has a dotted quarter note G2, an eighth note A2, a quarter note Bb2, and a quarter note C3. Bass staff has a dotted quarter note G2, an eighth note A2, a quarter note Bb2, and a quarter note C3. Measure 4: Treble staff has a quarter note C3, a quarter note D3, a quarter note E3, and a quarter note F3. Bass staff has a quarter note C3, a quarter note D3, a quarter note E3, and a quarter note F3.

Solo Cello

5

Two staves of music. Measure 5: Treble staff has a quarter note G2, a quarter note A2, a quarter note Bb2, and a quarter note C3. Bass staff has a quarter note G2, a quarter note A2, a quarter note Bb2, and a quarter note C3. Measure 6: Treble staff has a whole rest. Bass staff has a quarter note G2, a quarter note A2, a quarter note Bb2, and a quarter note C3.

Solo Cello

7

Two staves of music. Measure 7: Treble staff has a whole rest. Bass staff has a quarter note G2, a quarter note A2, a quarter note Bb2, and a quarter note C3. Measure 8: Treble staff has a whole rest. Bass staff has a quarter note G2, a quarter note A2, a quarter note Bb2, and a quarter note C3.

Solo Cello

9

Two staves of music. Measure 9: Treble staff has a whole rest. Bass staff has a quarter note G2, a quarter note A2, a quarter note Bb2, and a quarter note C3. Measure 10: Treble staff has a quarter note G2, a quarter note A2, a quarter note Bb2, and a quarter note C3. Bass staff has a quarter note G2, a quarter note A2, a quarter note Bb2, and a quarter note C3.

11

Solo Cello

00:00:35:10  
14.1,00  
A'

13

Solo Cello

15

Solo Cello

17

Solo Cello

19

Solo Cello

21

Solo Cello

23

Solo Cello

00:01:06:05  
26.1,00  
B

Detailed description: This system shows measures 23 and 24. The top staff (treble clef) contains a melodic line with eighth and sixteenth notes, including a dotted quarter note. The bottom staff (bass clef) provides harmonic support with chords and some eighth notes. A timecode box is present in the lower right of the system.

25

Solo Cello

Detailed description: This system shows measures 25 and 26. The top staff has a melodic line with eighth notes and a quarter note. The bottom staff features a more active bass line with eighth notes and chords.

27

Solo Cello

Detailed description: This system shows measures 27 and 28. The top staff continues the melodic line with quarter and eighth notes. The bottom staff has a steady bass line with chords.

29

Solo Cello

Detailed description: This system shows measures 29 and 30. The top staff features a melodic line with eighth notes and a quarter note. The bottom staff has a consistent bass line with chords.

31

Solo Cello

Detailed description: This system shows measures 31 and 32. The top staff has a melodic line with eighth notes and a quarter note. The bottom staff provides harmonic support with chords.

33

Solo Cello

Detailed description: This system shows measures 33 and 34. The top staff contains a melodic line with eighth notes and a quarter note. The bottom staff has a bass line with chords.

35

Solo Cello

Detailed description: This system shows measures 35 and 36. The top staff has a melodic line with eighth notes and a quarter note. The bottom staff features a bass line with chords.

37

Solo Cello

39

Solo Cello

41

Solo Cello

43

Solo Cello

45

Solo Cello

47

Solo Cello

49

Solo Cello

Solo Cello

Bach, Johann Sebastian - Suite No. 5 in C minor for Cello

♩ = 250,000000 ♩ = 140,000137



35



38



41



44

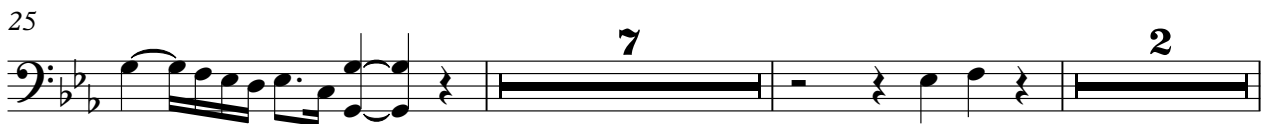


47



Bach, Johann Sebastian - Suite No. 5 in C minor for Cello

♩ = 250,000000 ♩ = 140,000137



Copyright © 1996 by David J. Grossman