

# Bartok, Bela - Bagatelle

♩ = 151,999939

Solo

Solo

4

Solo

Solo

7

Solo

Solo

9

Solo

Solo

11

Solo

Solo

13

Solo

Solo

15

Solo

Solo

17

Solo

Solo

19

Solo

Solo

21

Solo

Solo

23

Solo

Solo

25

Solo

Solo

27

Solo

Solo

29

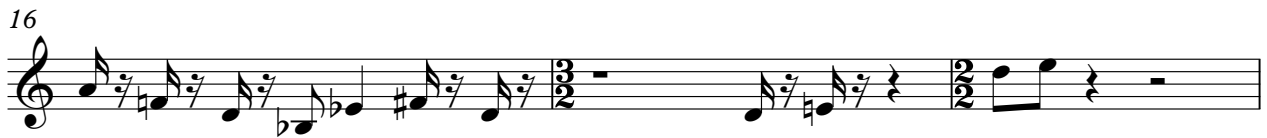
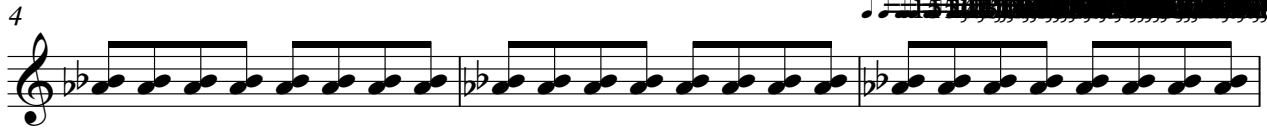
Solo

Solo

Bartok, Bela - Bagatelle

Solo

♩ = 151,999939



V.S.

2

Solo

27

The image shows a musical score for a guitar solo. It begins at measure 27, indicated by the number '27' above the staff. The music is written on a single staff with a treble clef and a key signature of one sharp (F#). The tempo or feel is marked with a '2' at the top left. The solo consists of several measures of eighth and sixteenth notes, some with slurs and accents. A double bar line appears after the third measure, and another after the fifth measure. The piece concludes with a final chord consisting of a low bass note (F#) and a higher note (B) tied together, with a fermata over the notes.

# Bartok, Bela - Bagatelle

Solo

♩ = 151,999939

2

6

10

12

15

17

19

22

25

27