

♩ = 208,000381

Solo

Solo

3
Solo

Solo

6
Solo

Solo

10
Solo

Solo

14
Solo

Solo

18

Solo

Solo

22

Solo

Solo

26

Solo

Solo

30

Solo

Solo

34

Solo

Solo

38

Solo

Solo

41

Solo

Solo

45

Solo

Solo

48

Solo

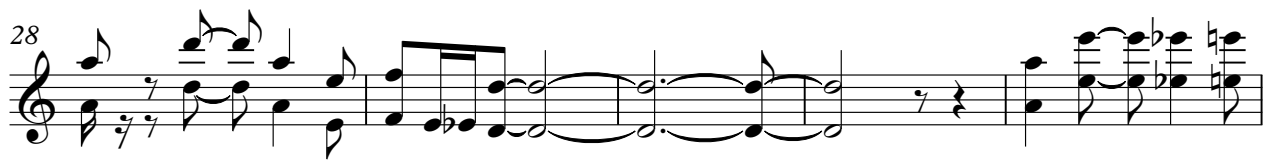
Solo

50

Solo

Solo

♩ = 208,000381



Solo

♩ = 208,000381

3

7

11

15

19

23

27

31

35

V.S.

2

Solo

39

Four measures of music in treble clef. Each measure contains a series of eighth notes, with some notes marked with a sharp (#) or a flat (b). The notes are grouped in pairs across the four measures.

43

Four measures of music in treble clef, continuing the eighth-note pattern from the previous system. The notes are grouped in pairs across the four measures.

47

Four measures of music in treble clef. The first measure contains a quarter rest followed by an eighth note. The second measure contains a quarter rest followed by an eighth note. The third measure contains a quarter rest followed by an eighth note. The fourth measure contains a quarter rest followed by an eighth note. The notes are marked with a flat (b) or a sharp (#).

50

Four measures of music in treble clef. The first measure contains a quarter note followed by a quarter rest. The second measure contains a half note. The third measure contains a half note. The fourth measure contains a half note. The notes are marked with a sharp (#) or a flat (b).