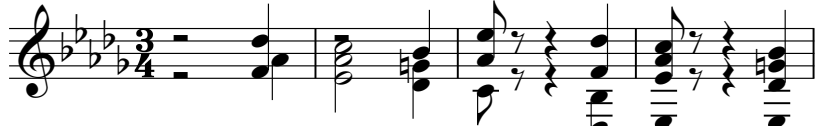


Beethoven, Ludwig Wan - Sonata No 14 in C#min (Mor

0.0"
1.1,00
© Edward P. Grant

♩ = 189,000183

Beethoven - Sonata in C#minor 2.



Beethoven - Sonata in C#minor 2.



Beethoven - Sonata in C#minor 2.



Beethoven - Sonata in C#minor 2.



Beethoven - Sonata in C#minor 2.



Beethoven - Sonata in C#minor 2.



Beethoven - Sonata in C#minor 2.



Beethoven - Sonata in C#minor 2.



Beethoven - Sonata in C#minor 2.



Beethoven - Sonata in C#minor 2.



41
Beethoven - Sonata in C#minor 2.

45
Beethoven - Sonata in C#minor 2.

49
Beethoven - Sonata in C#minor 2.

53
Beethoven - Sonata in C#minor 2.

57
Beethoven - Sonata in C#minor 2.

61
Beethoven - Sonata in C#minor 2.

66
Beethoven - Sonata in C#minor 2.

70
Beethoven - Sonata in C#minor 2.

75
Beethoven - Sonata in C#minor 2.

80
Beethoven - Sonata in C#minor 2.

84
Beethoven - Sonata in C#minor 2.

89
Beethoven - Sonata in C#minor 2.

94
Beethoven - Sonata in C#minor 2.

98
Beethoven - Sonata in C#minor 2.

103
Beethoven - Sonata in C#minor 2.

108
Beethoven - Sonata in C#minor 2.

112
Beethoven - Sonata in C#minor 2.

116
Beethoven - Sonata in C#minor 2.

120
Beethoven - Sonata in C#minor 2.

124
Beethoven - Sonata in C#minor 2.

128
Beethoven - Sonata in C#minor 2.

132
Beethoven - Sonata in C#minor 2.

The image displays a page of musical notation for the second movement of Beethoven's Sonata in C#minor. The page is numbered '3' in the top right corner. It contains ten systems of music, each starting with a measure number and the title 'Beethoven - Sonata in C#minor 2.'. The systems are numbered 89, 94, 98, 103, 108, 112, 116, 120, 124, and 132. Each system consists of a single staff of music in treble clef, with a key signature of two flats (Bb and Eb) and a common time signature. The notation includes various rhythmic values, accidentals, and phrasing slurs. The music is written in a standard musical notation style, with notes, stems, and beams clearly visible.

Beethoven - Sonata in C#minor 2.

136

Beethoven - Sonata in C#minor 2.

139

Beethoven, Ludwig Van - Sonata No 14 in C#min (Mor
Beethoven - Sonata in C#minor 2.

$\text{♩} = 189,000183$

8
15
22
29
36
44
51
58
65

V.S.

This image displays a musical score for the second movement of Beethoven's Sonata in C#minor, Op. 2, No. 2. The score is presented in a single system with ten staves, each representing a measure of music. The measures are numbered 72, 80, 88, 96, 104, 111, 118, 125, 132, and 137. The music is written in C# minor, indicated by the key signature of two flats (Bb and Eb) and a sharp (F#) on the treble clef. The notation includes various rhythmic values, such as eighth and sixteenth notes, and rests. The bass line is represented by vertical stems and dots on the lower part of the staff, indicating the notes to be played. The score shows a complex texture with multiple voices, including a prominent melodic line in the upper voice and a dense harmonic accompaniment in the lower voices. The piece concludes with a final cadence in measure 137.