

Byrd, William - Music for Six Viols. - Michael J. Starke

♩ = 157,999939

lute

tr viol 2

Tenor vil 1

tenor viol 2

Detailed description: This system contains the first three staves of the score. The lute staff is in treble clef with a 4/2 time signature and a tempo marking of ♩ = 157,999939. It begins with a whole note chord (Bb, D, F, G) followed by a series of eighth notes: Bb, D, F, G, Bb, D, F, G. The tr viol 2 staff is in treble clef and follows a similar rhythmic pattern. The Tenor vil 1 and tenor viol 2 staves are in bass clef and contain whole notes: Tenor vil 1 has Bb, D, F, G; tenor viol 2 has Bb, D, F, G.



4

lute

tr viol 2

Tenor vil 1

tenor viol 2

bass viol 1

Detailed description: This system contains the next five staves. The lute staff starts with a measure number '4' and contains a complex sequence of chords and notes. The tr viol 2 staff continues with whole notes: Bb, D, F, G, Bb, D, F, G. The Tenor vil 1 staff has whole notes: Bb, D, F, G, Bb, D, F, G. The tenor viol 2 staff has whole notes: Bb, D, F, G, Bb, D, F, G. The bass viol 1 staff has whole notes: Bb, D, F, G, Bb, D, F, G.

6

lute

bass 2/contra

tr viol 1

tr viol 2

Tenor vil 1

tenor viol 2

bass viol 1

bass viol 1



8

lute

bass 2/contra

tr viol 1

tr viol 2

Tenor vil 1

tenor viol 2

bass viol 1

bass viol 1

10

lute

bass 2/contra

tr viol 1

tr viol 2

Tenor vil 1

tenor viol 2

bass viol 1

Detailed description: This block contains the musical notation for measures 10 and 11. The score is arranged in a system with seven staves. The top staff is for the lute, the second for bass 2/contrabass, the third for first trumpet, the fourth for second trumpet, the fifth for first tenor viola, the sixth for second tenor viola, and the seventh for first bass viola. The music is in 6/8 time. Measure 10 shows a lute melody with a long note, bass 2/contra with a half note, and various string parts. Measure 11 continues the lute melody with more intricate patterns, while the bass 2/contra part has a half note and a rest. The system ends with a double bar line and a repeat sign.



11

lute

bass 2/contra

tr viol 1

tr viol 2

Tenor vil 1

tenor viol 2

bass viol 1

bass viol 1

Detailed description: This block contains the musical notation for measures 11 and 12. The score is arranged in a system with seven staves. The top staff is for the lute, the second for bass 2/contrabass, the third for first trumpet, the fourth for second trumpet, the fifth for first tenor viola, the sixth for second tenor viola, and the seventh for first bass viola. The music is in 6/8 time. Measure 11 shows a lute melody with a long note, bass 2/contra with a half note, and various string parts. Measure 12 continues the lute melody with more intricate patterns, while the bass 2/contra part has a half note and a rest. The system ends with a double bar line and a repeat sign.

12

lute

bass 2/contra

tr viol 1

tr viol 2

Tenor vil 1

tenor viol 2

bass viol 1

bass viol 1



14

lute

bass 2/contra

tr viol 1

tr viol 2

Tenor vil 1

tenor viol 2

bass viol 1

bass viol 1

♩ = 148,0008599893 ♩ = 152,000939

16

lute

bass 2/contra

♩ = 148,0008599893 ♩ = 152,000939

tr viol 1

tr viol 2

Tenor vil 1

tenor viol 2

bass viol 1

bass viol 1

19

lute

bass 2/contra

tr viol 1

tr viol 2

Tenor vil 1

tenor viol 2

bass viol 1

bass viol 1

21

lute

bass 2/contra

tr viol 1

tr viol 2

Tenor vil 1

tenor viol 2

bass viol 1

bass viol 1



24

lute

bass 2/contra

tr viol 1

tr viol 2

Tenor vil 1

tenor viol 2

bass viol 1

bass viol 1

27

lute

bass 2/contra

tr viol 1

tr viol 2

Tenor vil 1

tenor viol 2

bass viol 1

bass viol 1



29

lute

bass 2/contra

tr viol 1

tr viol 2

Tenor vil 1

tenor viol 2

bass viol 1

bass viol 1

31

lute

bass 2/contra

tr viol 1

tr viol 2

Tenor vil 1

tenor viol 2

bass viol 1

bass viol 1



34

lute

bass 2/contra

tr viol 1

tr viol 2

Tenor vil 1

tenor viol 2

bass viol 1

bass viol 1

37

lute

bass 2/contra

tr viol 1

tr viol 2

Tenor vil 1

tenor viol 2

bass viol 1

bass viol 1



40

lute

bass 2/contra

tr viol 1

tr viol 2

Tenor vil 1

tenor viol 2

bass viol 1

bass viol 1

42

lute

bass 2/contra

tr viol 1

tr viol 2

Tenor vil 1

tenor viol 2

bass viol 1

bass viol 1



44

lute

bass 2/contra

tr viol 1

tr viol 2

Tenor vil 1

tenor viol 2

bass viol 1

bass viol 1

46

lute

bass 2/contra

tr viol 1

tr viol 2

Tenor vil 1

tenor viol 2

bass viol 1

bass viol 1

Detailed description: This block contains the musical notation for measures 46 and 47. The score is for a lute and a string quartet. The lute part is in the treble clef with a key signature of one sharp (F#) and a 4/2 time signature. The bass 2/contrabass part is in the bass clef with the same key signature and time signature. The string quartet consists of two violins (tr viol 1 and 2), two violas (Tenor vil 1 and tenor viol 2), and two bass violins (bass viol 1 and 2). The first violin and second violin parts are in the treble clef, while the viola and bass violin parts are in the bass clef. The key signature changes from one sharp to one flat (F) at the beginning of measure 47. The time signature remains 4/2.



48

lute

bass 2/contra

tr viol 1

tr viol 2

Tenor vil 1

tenor viol 2

bass viol 1

bass viol 1

Detailed description: This block contains the musical notation for measures 48, 49, and 50. The lute part is in the treble clef with a key signature of one flat (F) and a 4/2 time signature. The bass 2/contrabass part is in the bass clef with the same key signature and time signature. The string quartet consists of two violins (tr viol 1 and 2), two violas (Tenor vil 1 and tenor viol 2), and two bass violins (bass viol 1 and 2). The first violin and second violin parts are in the treble clef, while the viola and bass violin parts are in the bass clef. The key signature remains one flat (F) and the time signature remains 4/2.

51

lute

bass 2/contra

tr viol 1

Tenor vil 1

tenor viol 2

bass viol 1

bass viol 1

Detailed description: This musical score block covers measures 51, 52, and 53. The lute part (treble clef) features a melodic line with various chords and a key signature change to one sharp (F#) in measure 53. The bass 2/contra part (bass clef) provides a simple harmonic accompaniment. The string section includes a trumpet viol 1 (treble clef), tenor viol 1 (alto clef), tenor viol 2 (alto clef), and two bass viol 1 parts (bass clef). The string parts are mostly sustained notes with some movement in the later measures.



54

lute

bass 2/contra

tenor viol 2

bass viol 1

bass viol 1

Detailed description: This musical score block covers measures 54, 55, and 56. The lute part (treble clef) continues the melodic line with complex chordal textures. The bass 2/contra part (bass clef) maintains the harmonic support. The string section includes tenor viol 2 (alto clef) and two bass viol 1 parts (bass clef). The string parts show more rhythmic activity and melodic movement in these measures.

57

lute

bass 2/contra

tr viol 1

tr viol 2

Tenor vil 1

tenor viol 2

bass viol 1

bass viol 1



60

lute

bass 2/contra

tr viol 1

tr viol 2

Tenor vil 1

tenor viol 2

bass viol 1

bass viol 1

62

lute

bass 2/contra

tr viol 1

tr viol 2

Tenor vil 1

tenor viol 2

bass viol 1

bass viol 1



65

lute

bass 2/contra

tr viol 1

tr viol 2

Tenor vil 1

tenor viol 2

bass viol 1

bass viol 1

67

lute

bass 2/contra

tr viol 1

Tenor vil 1

tenor viol 2

bass viol 1

bass viol 1



69

lute

bass 2/contra

tr viol 1

tr viol 2

Tenor vil 1

tenor viol 2

bass viol 1

bass viol 1

71

lute

tr viol 1

tr viol 2

Tenor vil 1

tenor viol 2

bass viol 1



73

lute

bass 2/contra

tr viol 1

tr viol 2

Tenor vil 1

tenor viol 2

bass viol 1

bass viol 1

75

lute

bass 2/contra

tr viol 1

tr viol 2

Tenor vil 1

tenor viol 2

bass viol 1

bass viol 1



78

lute

bass 2/contra

tr viol 1

tr viol 2

Tenor vil 1

tenor viol 2

bass viol 1

bass viol 1

80

lute

bass 2/contra

tr viol 1

tr viol 2

Tenor vil 1

tenor viol 2

bass viol 1

bass viol 1



82

lute

bass 2/contra

tr viol 1

tr viol 2

Tenor vil 1

tenor viol 2

bass viol 1

bass viol 1

84

lute

bass 2/contra

tr viol 1

tr viol 2

Tenor vil 1

tenor viol 2

bass viol 1

bass viol 1

86

lute

bass 2/contra

tr viol 1

tr viol 2

Tenor vil 1

tenor viol 2

bass viol 1

bass viol 1

♩ = 136,000153

20

♩ = 113,999954 = ♯, 1999850290

88

lute

bass 2/contra

tr viol 2

Tenor vil 1

tenor viol 2

bass viol 1

bass viol 1



90

lute

bass 2/contra

tr viol 2

Tenor vil 1

tenor viol 2

bass viol 1

bass viol 1

91

lute

bass 2/contra

tr viol 1

tr viol 2

Tenor vil 1

tenor viol 2

bass viol 1

bass viol 1



93

lute

bass 2/contra

tr viol 1

Tenor vil 1

tenor viol 2

bass viol 1

bass viol 1

95

lute

bass 2/contra

tr viol 1

Tenor vil 1

tenor viol 2

bass viol 1

bass viol 1

Detailed description: This block contains the musical score for measures 95 and 96. The score is written for a lute and a string quartet. The lute part is in the treble clef and features a melodic line with some grace notes and a fermata. The bass 2/contrabass part is in the bass clef and provides a simple harmonic accompaniment. The string quartet consists of a first violin (tr viol 1), a first viola (Tenor vil 1), a second viola (tenor viol 2), and two first bass violins (bass viol 1). The string parts are mostly sustained notes with some movement in the second viola and first bass violin parts.



96

lute

bass 2/contra

tr viol 2

Tenor vil 1

tenor viol 2

bass viol 1

bass viol 1

Detailed description: This block contains the musical score for measures 96 and 97. The lute part continues with a melodic line, including a fermata and a final chord. The bass 2/contrabass part continues with a simple harmonic accompaniment. The string quartet consists of a second violin (tr viol 2), a first viola (Tenor vil 1), a second viola (tenor viol 2), and two first bass violins (bass viol 1). The string parts are mostly sustained notes with some movement in the second violin and second viola parts.

97

lute

bass 2/contra

tr viol 2

Tenor vil 1

tenor viol 2

bass viol 1

bass viol 1

Detailed description: This block contains the musical notation for measures 97 through 100. The score is arranged in a system with seven staves. The top staff is for the lute, written in treble clef with a key signature of one sharp (F#). It features complex rhythmic patterns with many beamed notes and rests. The second staff is for bass 2/contrabass, in bass clef, with a few notes. The third staff is for the second violin (tr viol 2), in treble clef, with a melodic line. The fourth staff is for the first tenor viola (Tenor vil 1), in alto clef, with a few notes. The fifth staff is for the second tenor viola (tenor viol 2), in alto clef, with a melodic line. The sixth staff is for the first bass viola (bass viol 1), in bass clef, with a few notes. The seventh staff is for the second bass viola (bass viol 1), in bass clef, with a few notes. The music concludes at the end of measure 100.



98

lute

bass 2/contra

tr viol 2

Tenor vil 1

tenor viol 2

bass viol 1

bass viol 1

Detailed description: This block contains the musical notation for measures 98 through 101. The score is arranged in a system with seven staves. The top staff is for the lute, in treble clef with a key signature of one flat (Bb). It features complex rhythmic patterns with many beamed notes and rests. The second staff is for bass 2/contrabass, in bass clef, with a few notes. The third staff is for the second violin (tr viol 2), in treble clef, with a melodic line. The fourth staff is for the first tenor viola (Tenor vil 1), in alto clef, with a few notes. The fifth staff is for the second tenor viola (tenor viol 2), in alto clef, with a melodic line. The sixth staff is for the first bass viola (bass viol 1), in bass clef, with a few notes. The seventh staff is for the second bass viola (bass viol 1), in bass clef, with a few notes. The music concludes at the end of measure 101.

100

lute

bass 2/contra

tr viol 1

Tenor vil 1

tenor viol 2

bass viol 1

bass viol 1

Detailed description: This block contains the musical score for measures 100 and 101. It features six staves: lute (treble clef), bass 2/contra (bass clef), tr viol 1 (treble clef), Tenor vil 1 (bass clef), tenor viol 2 (bass clef), and two bass viol 1 staves (bass clef). The lute part starts with a treble clef and a key signature of one sharp (F#). The bass 2/contra part starts with a bass clef and a key signature of one flat (Bb). The strings (tr viol 1, Tenor vil 1, tenor viol 2, and two bass viol 1 staves) start with a bass clef and a key signature of one flat (Bb). The music is in 7/8 time. Measure 100 shows the lute playing a complex chordal figure, while the bass 2/contra and strings play a steady bass line. Measure 101 continues the lute's melodic line and the bass line.



102

lute

bass 2/contra

tr viol 1

Tenor vil 1

tenor viol 2

bass viol 1

bass viol 1

Detailed description: This block contains the musical score for measures 102 and 103. It features six staves: lute (treble clef), bass 2/contra (bass clef), tr viol 1 (treble clef), Tenor vil 1 (bass clef), tenor viol 2 (bass clef), and two bass viol 1 staves (bass clef). The lute part starts with a treble clef and a key signature of one flat (Bb). The bass 2/contra part starts with a bass clef and a key signature of one flat (Bb). The strings (tr viol 1, Tenor vil 1, tenor viol 2, and two bass viol 1 staves) start with a bass clef and a key signature of one flat (Bb). The music is in 7/8 time. Measure 102 shows the lute playing a complex chordal figure, while the bass 2/contra and strings play a steady bass line. Measure 103 continues the lute's melodic line and the bass line.

104

lute

bass 2/contra

tr viol 2

Tenor vil 1

tenor viol 2

bass viol 1

bass viol 1

Detailed description: This block contains the musical score for measures 104 and 105. The score is arranged in a system with seven staves. The top staff is for the lute, written in treble clef with a key signature of two flats. It features complex chordal textures with many beamed notes and accidentals. The second staff is for bass 2/contrabass, in bass clef, with a simple line of notes. The third staff is for the second trumpet (tr viol 2), in treble clef, with a few notes and rests. The fourth staff is for the first tenor violin (Tenor vil 1), in alto clef, with a few notes. The fifth staff is for the second tenor violin (tenor viol 2), in alto clef, with a few notes. The sixth staff is for the first bass violin (bass viol 1), in bass clef, with a few notes. The seventh staff is for the second bass violin (bass viol 1), in bass clef, with a few notes. The music is in a 4/4 time signature.



106

lute

bass 2/contra

tr viol 2

Tenor vil 1

tenor viol 2

bass viol 1

bass viol 1

Detailed description: This block contains the musical score for measures 106 and 107. The score is arranged in a system with seven staves. The top staff is for the lute, in treble clef, showing more complex rhythmic patterns and accidentals. The second staff is for bass 2/contrabass, in bass clef. The third staff is for the second trumpet (tr viol 2), in treble clef. The fourth staff is for the first tenor violin (Tenor vil 1), in alto clef. The fifth staff is for the second tenor violin (tenor viol 2), in alto clef. The sixth staff is for the first bass violin (bass viol 1), in bass clef. The seventh staff is for the second bass violin (bass viol 1), in bass clef. The music continues in the same 4/4 time signature.

108

lute

bass 2/contra

tr viol 1

tr viol 2

Tenor vil 1

tenor viol 2

bass viol 1

bass viol 1

Detailed description: This block contains the musical score for measures 108 and 109. The score is written for a lute and a string quartet. The lute part is in the treble clef with a key signature of one flat. The string quartet consists of two violins (treble clef), two violas (alto clef), and two violas/basses (bass clef). The notation includes various note values, rests, and accidentals. A double bar line is present at the end of measure 109.

109

lute

bass 2/contra

tr viol 1

tr viol 2

Tenor vil 1

tenor viol 2

bass viol 1

bass viol 1

Detailed description: This block contains the musical score for measures 109 and 110. The score continues from the previous block. The lute part features a complex rhythmic pattern in measure 109. The string quartet continues with their respective parts. The notation includes various note values, rests, and accidentals. A double bar line is present at the end of measure 110.

111

lute

bass 2/contra

$\text{♩} = 173,99736,000,580137 \text{ } \text{♩} = 123,9105,929954 \text{ } \text{♩} = 190,00029027$

tr viol 1

tr viol 2

Tenor vil 1

tenor viol 2

bass viol 1

bass viol 1

$\text{♩} = 173,99736,000,580137 \text{ } \text{♩} = 123,9105,929954 \text{ } \text{♩} = 190,000290$

113

lute

bass 2/contra

tr viol 1

tr viol 2

Tenor vil 1

tenor viol 2

bass viol 1

bass viol 1

114

lute

bass 2/contra

tr viol 1

tr viol 2

Tenor vil 1

tenor viol 2

bass viol 1

bass viol 1



115

lute

bass 2/contra

tr viol 1

tr viol 2

Tenor vil 1

tenor viol 2

bass viol 1

bass viol 1

♩ = 180,000183 ♩ = 170,000162 ♩ = 150,000000 ♩ = 140,000137

117

lute

bass 2/contra

♩ = 180,000183 ♩ = 170,000162 ♩ = 150,000000 ♩ = 140,000137

tr viol 1

tr viol 2

Tenor vil 1

tenor viol 2

bass viol 1

bass viol 1

♩ = 130,000137 ♩ = 120,000000 ♩ = 109,999180 ♩ = 89,999500 ♩ = 190,000290

119

lute

bass 2/contra

♩ = 130,000137 ♩ = 120,000000 ♩ = 109,999180 ♩ = 89,999500 ♩ = 190,000290

tr viol 1

tr viol 2

Tenor vil 1

tenor viol 2

bass viol 1

bass viol 1

Byrd, William - Music for Six Viols. - Michael J. Starke

lute

♩ = 157,999939

4

6

8

10

11

12

15

17

20

♩ = 148,000138,9998931327,0001379

V.S.

22



25



28



30



32



35



38



40



42



44



46

48

51

54

57

60

62

65

67

70

V.S.

72

74

76

79

81

83

85

87

♩ = 136,000153

88

♩ = 113,000014000000290

90

91



92



94



95



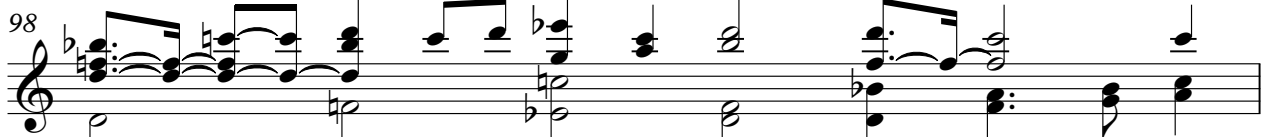
96



97



98



99



101



103



105

107

109

111

♩ = 173,999786000137 = 123,0999999954 ♩ = 190,000290

113

114

115

♩ = 180,000183 ♩ = 170,0000000000 ♩ = 150,000000 ♩ = 140,000137

117

♩ = 130,000137 120,000000 ♩ = 109,999998000000 ♩ = 89,99999900290

119

bass 2/contr

Byrd, William - Music for Six Viols. - Michael J. Starke

♩ = 157,999939

6



10



13



16 ♩ = 148,000000 ♩ = 152,999939



20



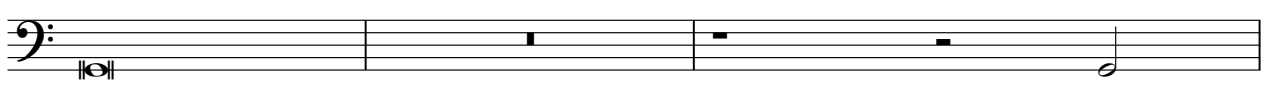
24



27



31



34



39

43

47

50

53

60

63

66

71

75

♩ = 157,999939

5

9

12

15

♩ = 148,000039

19

23

27

31

35

39

42

46

49

60

62

65

70

73

104



106



108



110

♩ = 173,995780001540,00005,99990,000



113



116

♩ = 180,000183 = ♯ = 170,00009200 = ♯ = 150,0000037



119

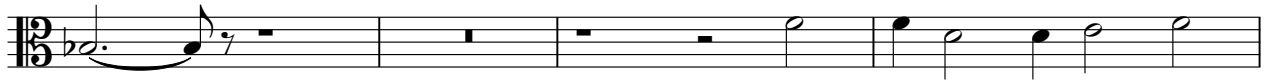
♩ = 130,000137 ♩ = 120,000000 = 100,9999800000 ♩ = 80,99996000



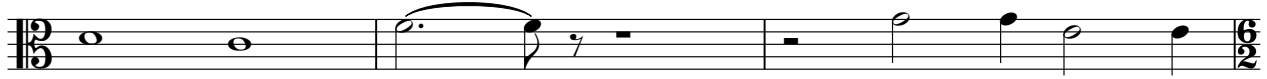
37



40



44



47



50



53



60



63



67



70



73



77



81



84



87

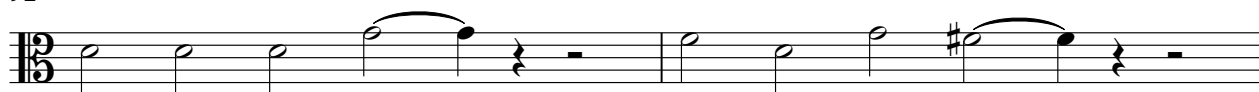
♩ = 136,000153,999149,985,000290



90



92



94



96



99



V.S.

33



36



39



43



47



50



53



56



59



62



65



69



72



76



79



82



85

♩ = 136,000153



88

♩ = 113,99995499985 = 190,000290



90



92



V.S.

bass viol 1

Byrd, William - Music for Six Viols. - Michael J. Starke

♩ = 157,999939

4

8

12

16

♩ = 148,000159 157,999939

20

24

27

31

34

37

V.S.

2

bass viol 1

40



43



47



54



57



61



65



69



73



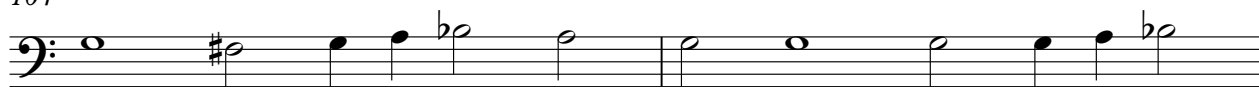
76



102



104



106



108



110

♩ = 173,95678001510,00123,999052290



113



116

♩ = 180,000183



118

♩ = 170,00169,2000000 = 150,000000137 = 130,000000100 = 100,0000000000290



bass viol 1

Byrd, William - Music for Six Viols. - Michael J. Starke

♩ = 157,999939

6



10



13



16 ♩ = 148,000000 ♩ = 152,999939



20



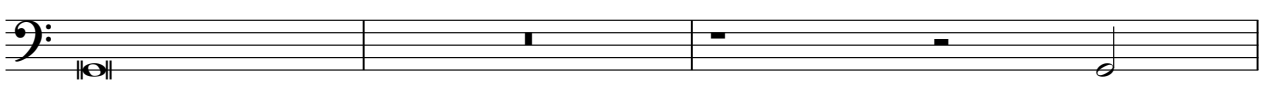
24



27



31



34



2

bass viol 1

37



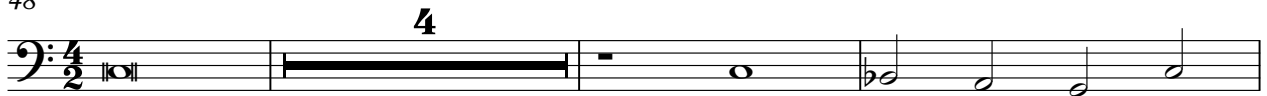
41



45



48



55



58



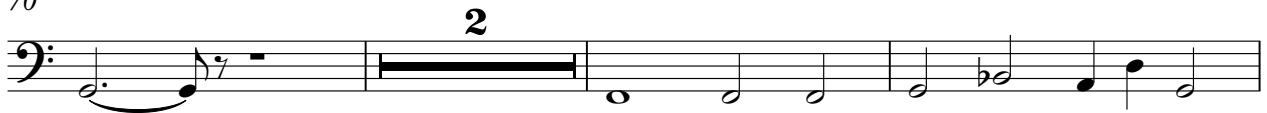
62



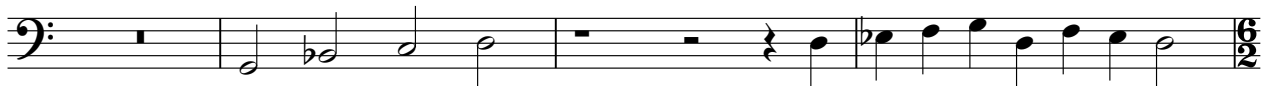
67



70



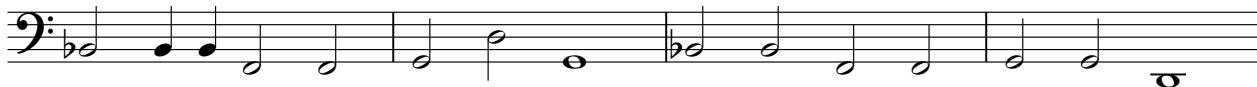
75



79



82



86

$\text{♩} = 136,000153,999140,99850,000290$



89



91



93



95



98



100



102



V.S.

