

Chopin, Frederic - Mazurkas - Ron Lubetsky, M.D. (Op.

0.0"
1.1,00
Chopin: Mazurka, Op. 33 No. 3- Simplice

♩ = 120,000000

Chopin: Op. 33 No. 3



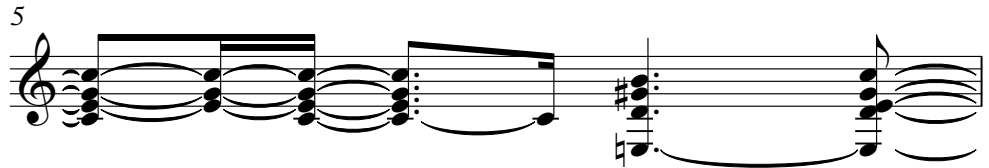
Chopin: Op. 33 No. 3



Chopin: Op. 33 No. 3



Chopin: Op. 33 No. 3



Chopin: Op. 33 No. 3



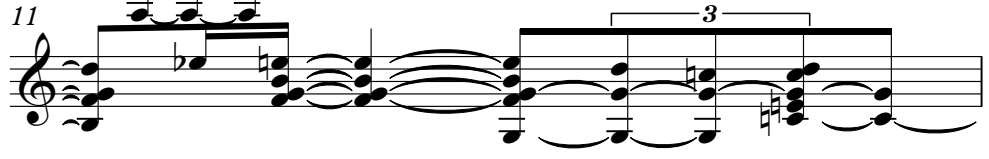
Chopin: Op. 33 No. 3



Chopin: Op. 33 No. 3



Chopin: Op. 33 No. 3



Chopin: Op. 33 No. 3



Chopin: Op. 33 No. 3



14 Chopin: Op. 33 No. 3

15 Chopin: Op. 33 No. 3

17 Chopin: Op. 33 No. 3

18 Chopin: Op. 33 No. 3

19 Chopin: Op. 33 No. 3

21 Chopin: Op. 33 No. 3

22 Chopin: Op. 33 No. 3

23 Chopin: Op. 33 No. 3

24 Chopin: Op. 33 No. 3

25 Chopin: Op. 33 No. 3

26 Chopin: Op. 33 No. 3

Chopin: Op. 33 No. 3

Chopin: Op. 33 No. 3

Chopin: Op. 33 No. 3

Chopin: Op. 33 No. 3

Chopin: Op. 33 No. 3

Chopin: Op. 33 No. 3

Chopin: Op. 33 No. 3

Chopin: Op. 33 No. 3

Chopin: Op. 33 No. 3

Chopin: Op. 33 No. 3

The image displays a page of musical notation for Chopin's Op. 33 No. 3, specifically measures 27 through 41. The score is written in a single system with ten staves. Each staff is labeled with the piece name and a measure number. The notation includes treble clefs, a key signature of one flat (B-flat), and a 3/4 time signature. The music features a variety of rhythmic patterns, including eighth and sixteenth notes, and rests. There are several triplet markings (indicated by a '3' over a bracket) in measures 27, 29, 30, and 39. The piece concludes with a double bar line at the end of measure 41.

Chopin: Op. 33 No. 3

Chopin, Frederic - Mazurkas - Ron Lubetsky, M.D. (Op.

♩ = 120,000000

4

6 3

8

10 3 3

12 3

14

16 3

18

20

V.S.

22

24

26

27

29

30

32

34

36

38

Chopin: Op. 33 No. 3

40

Musical score for Chopin's Op. 33 No. 3, page 3, starting at measure 40. The score is written for piano in G major, 3/4 time. It features a treble and bass staff. The right hand has a melodic line with grace notes and slurs, while the left hand provides a harmonic accompaniment with chords and moving lines. The piece concludes with a double bar line.