

Bruckner, Anton - Locus iste (Choral motet)

Violino I.

Violino II.

Viola.

Violoncello.

6

Violino I.

Violino II.

Viola.

Violoncello.

11

Violino I.

Violino II.

Viola.

Violoncello.

16

Violino I.

Violino II.

Viola.

Violoncello.



21

Violino I.

Violino II.

Viola.



25

Violino I.

Violino II.

Viola.



29

Violino I.

Violino II.

Viola.

Violoncello.



34

Violino I.

Violino II.

Viola.

Violoncello.

This system of music covers measures 34 through 38. It features four staves: Violino I (treble clef), Violino II (treble clef), Viola (alto clef), and Violoncello (bass clef). The music consists of rhythmic patterns with various note values and rests, including dotted notes and sixteenth notes.

39

Violino I.

Violino II.

Viola.

Violoncello.

This system of music covers measures 39 through 43. It features four staves: Violino I (treble clef), Violino II (treble clef), Viola (alto clef), and Violoncello (bass clef). The music includes longer note values such as half notes and whole notes, with some notes tied across measures.

44

Violino I.

Violino II.

Viola.

Violoncello.

This system of music covers measures 44 through 48. It features four staves: Violino I (treble clef), Violino II (treble clef), Viola (alto clef), and Violoncello (bass clef). The music continues with rhythmic patterns and includes a double bar line at the end of the system.

Violino I.

Bruckner, Anton - Locus iste (Choral motet)



7



13



19



25



31



37



43



Violino II.

Bruckner, Anton - Locus iste (Choral motet)



First musical staff in 4/4 time, starting with a treble clef and a key signature of one sharp (F#). The melody consists of quarter and eighth notes with various rests.

7



Second musical staff, starting at measure 7. The melody continues with quarter and eighth notes.

13



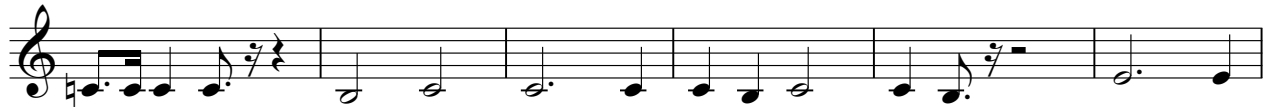
Third musical staff, starting at measure 13. The melody continues with quarter and eighth notes.

19



Fourth musical staff, starting at measure 19. The melody continues with quarter and eighth notes.

25



Fifth musical staff, starting at measure 25. The melody continues with quarter and eighth notes.

31



Sixth musical staff, starting at measure 31. The melody continues with quarter and eighth notes.

37



Seventh musical staff, starting at measure 37. The melody continues with quarter and eighth notes.

42



Eighth musical staff, starting at measure 42. The melody continues with quarter and eighth notes, ending with a double bar line.

Bruckner, Anton - Locus iste (Choral motet)

Viola.



7



13



19



25



31



37



43



Violoncello.

Bruckner, Anton - Locus iste (Choral motet)



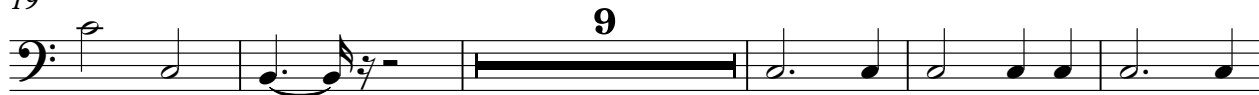
7



13



19



33



39



44

