

Couperin, Francois - La Linotte Effarouchee

♩ = 120,000000

Composer: Francois Couperin

Sequence: Faren Raborn (June 1995)

Email: Enlilora@ffarronah.com

Harpisichord

Harpisichord

3

Hpsd.

5

Hpsd.

7

Hpsd.

9

Hpsd.

Hpsd.

12

Hpsd.

Hpsd.

14

Hpsd.

Hpsd.

16

Hpsd.

Hpsd.

18

Hpsd.

Hpsd.

20

Hpsd.

Hpsd.

22

Hpsd.

Hpsd.

24

Hpsd.

Hpsd.

26

Hpsd.

Hpsd.

28

Hpsd.

Musical notation for measures 28-29, top system. The treble clef staff contains a melodic line with eighth and sixteenth notes, and a fermata over the final note. The bass clef staff contains a rhythmic accompaniment with eighth notes and rests.

Hpsd.

Musical notation for measures 28-29, bottom system. The bass clef staff continues the rhythmic accompaniment from the top system, featuring eighth notes and rests.

30

Hpsd.

Musical notation for measures 30-31, top system. The treble clef staff features a melodic line with eighth notes and a triplet of eighth notes in measure 31. The bass clef staff contains a rhythmic accompaniment with eighth notes and rests.

Hpsd.

Musical notation for measures 30-31, bottom system. The bass clef staff continues the rhythmic accompaniment from the top system, featuring eighth notes and rests.

32

Hpsd.

Musical notation for measures 32-33, top system. The treble clef staff contains a melodic line with eighth notes and a fermata over the final note. The bass clef staff contains a rhythmic accompaniment with eighth notes and rests.

Hpsd.

Musical notation for measures 32-33, bottom system. The bass clef staff continues the rhythmic accompaniment from the top system, featuring eighth notes and rests.

34

Hpsd.

Musical notation for measures 34-35, top system. The treble clef staff contains a melodic line with eighth notes and a triplet of eighth notes in measure 35. The bass clef staff contains a rhythmic accompaniment with eighth notes and rests.

Hpsd.

Musical notation for measures 34-35, bottom system. The bass clef staff continues the rhythmic accompaniment from the top system, featuring eighth notes and rests.

36

Hpsd.

Musical notation for measures 36-37, top system. The treble clef staff contains a melodic line with eighth notes and a fermata over the final note. The bass clef staff contains a rhythmic accompaniment with eighth notes and rests.

Hpsd.

Musical notation for measures 36-37, bottom system. The bass clef staff continues the rhythmic accompaniment from the top system, featuring eighth notes and rests.

38

Hpsd.

Hpsd.

Detailed description: This system contains two staves of music for measures 38 and 39. The top staff is in treble clef and the bottom staff is in bass clef. Both are in the key of D major (two sharps). The music consists of eighth and sixteenth notes with some rests. Measure 38 starts with a treble staff note on D4 and a bass staff note on G3. Measure 39 has a treble staff note on A4 and a bass staff note on D3.

40

Hpsd.

Hpsd.

Detailed description: This system contains two staves of music for measures 40 and 41. The top staff is in treble clef and the bottom staff is in bass clef. Both are in the key of D major. The music continues with eighth and sixteenth notes. Measure 40 starts with a treble staff note on B4 and a bass staff note on A2. Measure 41 has a treble staff note on C5 and a bass staff note on G2.

42

Hpsd.

Hpsd.

Detailed description: This system contains two staves of music for measures 42 and 43. The top staff is in treble clef and the bottom staff is in bass clef. Both are in the key of D major. The music continues with eighth and sixteenth notes. Measure 42 starts with a treble staff note on D5 and a bass staff note on F2. Measure 43 has a treble staff note on E5 and a bass staff note on E2.

44

Hpsd.

Hpsd.

Detailed description: This system contains two staves of music for measures 44 and 45. The top staff is in treble clef and the bottom staff is in bass clef. Both are in the key of D major. The music continues with eighth and sixteenth notes. Measure 44 starts with a treble staff note on F5 and a bass staff note on D2. Measure 45 has a treble staff note on G5 and a bass staff note on C2.

46

Hpsd.

Hpsd.

Detailed description: This system contains two staves of music for measures 46 and 47. The top staff is in treble clef and the bottom staff is in bass clef. Both are in the key of D major. Measure 46 features a complex chordal structure in the treble staff with many beamed notes, while the bass staff continues with eighth notes. Measure 47 has a treble staff with a whole rest and a bass staff with a whole note on D2.

Couperin, Francois - La Linotte Effarouchee

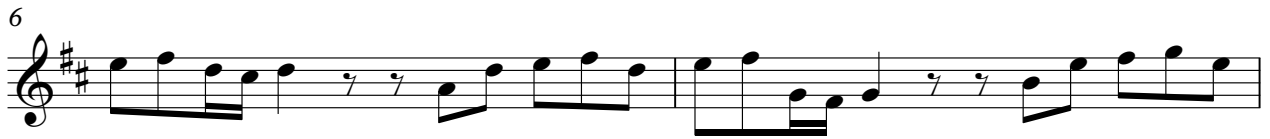
Harpichord

♩ = 120,000000

Composer: Francois Couperin

Sequence: Faren Raborn (June 1995)

Email: raborn@mac.com
www.musicnoteslib.com



V.S.

19



21



23



25



27



29



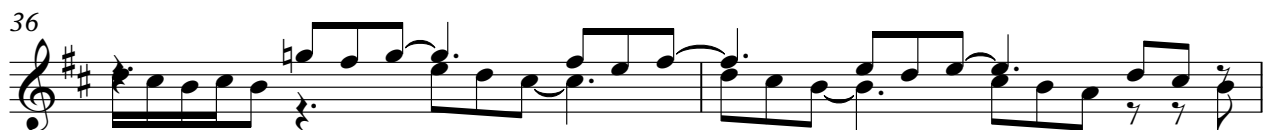
31



33



36



38



41



43



45



♩ = 120,000000

Measures 1-3 of the piece. The key signature is one sharp (F#). The time signature is 7/8. Measure 1 has a whole rest in the treble and a half note G2 in the bass. Measure 2 has a 12/8 time signature change and a quarter rest in the treble, with a sixteenth-note bass line starting on G2. Measure 3 continues the sixteenth-note bass line.

Measures 4-6. Measure 4 starts with a 4-measure rest in the treble and a sixteenth-note bass line starting on G2. Measure 5 continues the bass line with a quarter rest in the treble. Measure 6 continues the bass line with a quarter rest in the treble.

Measures 7-9. Measure 7 continues the sixteenth-note bass line. Measure 8 continues the bass line with a quarter rest in the treble. Measure 9 ends with a 7/8 time signature change and a quarter rest in the treble.

Measures 10-12. Measure 10 has a 6/8 time signature change and a quarter rest in the treble, with a sixteenth-note bass line starting on G2. Measure 11 continues the bass line with a quarter rest in the treble. Measure 12 continues the bass line with a quarter rest in the treble.

Measures 13-15. Measure 13 has a 4-measure rest in the treble and a sixteenth-note bass line starting on G2. Measure 14 continues the bass line with a quarter rest in the treble. Measure 15 continues the bass line with a quarter rest in the treble.

Measures 16-18. Measure 16 has a 4-measure rest in the treble and a sixteenth-note bass line starting on G2. Measure 17 continues the bass line with a quarter rest in the treble. Measure 18 continues the bass line with a quarter rest in the treble.

Measures 19-21. Measure 19 starts with a 4-measure rest in the treble and a sixteenth-note bass line starting on G2. Measure 20 continues the bass line with a quarter rest in the treble. Measure 21 continues the bass line with a quarter rest in the treble.

V.S.

22



25



28



31



34



36



39



42



45

