

Saint-Saens, Camille - Persons with Long Ears

Left Strings

Right Strings

Measures 1-4 of the score. The left strings play a melodic line starting in measure 2, while the right strings play a rhythmic accompaniment.

5

Left Strings

Right Strings

Measures 5-8 of the score. The left strings continue their melodic line, and the right strings provide a steady accompaniment.

9

Left Strings

Right Strings

Measures 9-11 of the score. The left strings play a melodic line with some rests, and the right strings continue their accompaniment.

12

Left Strings

Right Strings

Measures 12-14 of the score. The left strings play a melodic line, and the right strings provide a rhythmic accompaniment.

15

Left Strings

Right Strings

Measures 15-17 of the score. The left strings play a melodic line, and the right strings provide a rhythmic accompaniment.

18

Left Strings

Measure 18 of the score. The left strings play a melodic line.

2

22

Left Strings

Musical notation for Left Strings, measure 22. The staff shows a treble clef, a 7/8 time signature, and a sequence of notes: a quarter note, a quarter note, a quarter note, a quarter note, a quarter note, and a quarter note, all beamed together. The notes are on the first line of the staff. The measure ends with a double bar line.

Left Strings

Saint-Saens, Camille - Persons with Long Ears

Saint-Saens, Camille - Persons with Long

8

14

19

23

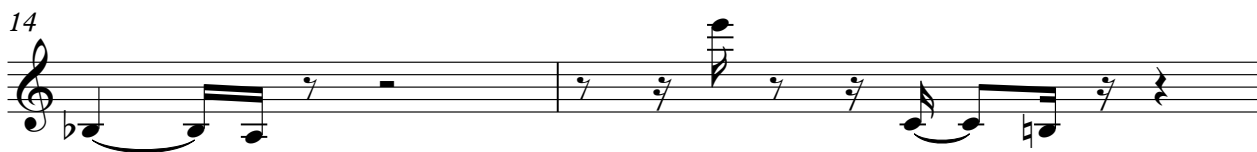
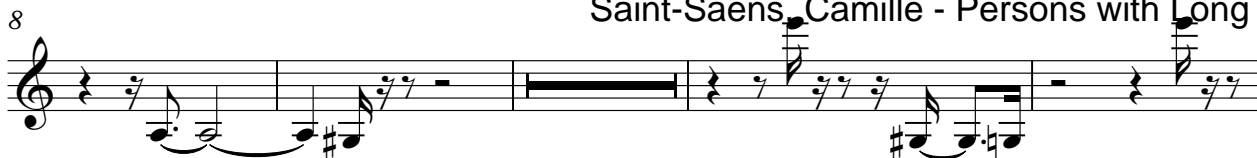
Right Strings

Saint-Saens, Camille - Persons with Long Ears

Saint-Saens, Camille - Persons with Long Ears



Saint-Saens, Camille - Persons with Long Ears



Saint-Saens, Camille - F

