

28 $\text{♩} = 195,000$ $\text{♩} = 195,000$

Satie's Sonatina Bureaucratique (1917)

29

Satie's Sonatina Bureaucratique (1917)

Il aime aussi à se tenir debout, les grands bras étendus, et à se faire...

30 $\text{♩} = 187,000$ $\text{♩} = 187,000$ $\text{♩} = 187,000$ $\text{♩} = 187,000$

Satie's Sonatina Bureaucratique (1917)

32 $\text{♩} = 187,000$ $\text{♩} = 187,000$ $\text{♩} = 187,000$ $\text{♩} = 187,000$

Satie's Sonatina Bureaucratique (1917)

34 $\text{♩} = 192,000$ $\text{♩} = 194,000$ $\text{♩} = 185,000$

Satie's Sonatina Bureaucratique (1917)

36 $\text{♩} = 190,000$ sa calotte chinoise.

Satie's Sonatina Bureaucratique (1917)

38 chinese skull-cap.

Satie's Sonatina Bureaucratique (1917)

40 $\text{♩} = 182,000$ $\text{♩} = 183,000$ $\text{♩} = 183,000$ $\text{♩} = 183,000$ $\text{♩} = 183,000$ $\text{♩} = 183,000$

Satie's Sonatina Bureaucratique (1917)

42 Il fait de grands gestes, et se...

Satie's Sonatina Bureaucratique (1917)

43 $\text{♩} = 183,000$ $\text{♩} = 183,000$ $\text{♩} = 183,000$ $\text{♩} = 183,000$ $\text{♩} = 183,000$ $\text{♩} = 183,000$

Satie's Sonatina Bureaucratique (1917)

44 se précipite dans l'escalier qu'il monte sur son dos. $\text{♩} = 187,000$ $\text{♩} = 189,000$

Satie's Sonatina Bureaucratique (1917)

Satie's Sonatina Bureaucratique (1917)

45

Satie's Sonatina Bureaucratique (1917)

46

Satie's Sonatina Bureaucratique (1917)

47

Satie's Sonatina Bureaucratique (1917)

48

Satie's Sonatina Bureaucratique (1917)

49

♩ = 190,000290

Satie's Sonatina Bureaucratique (1917)

50

♩ = 191,000076

Satie's Sonatina Bureaucratique (1917)

51

Quel monde est-ce !

Satie's Sonatina Bureaucratique (1917)

52

Satie's Sonatina Bureaucratique (1917)

♩ = 192,000000 ♩ = 193,000502 14

Satie's Sonatina Bureaucratique (1917)

53

Satie's Sonatina Bureaucratique (1917)

54

Satie's Sonatina Bureaucratique (1917)

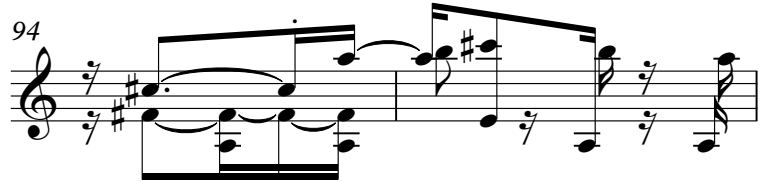
55

♩ = 200,000000

Satie's Sonatina Bureaucratique (1917)

The image displays a musical score for Satie's Sonatina Bureaucratique (1917), consisting of 11 staves of music. The score is written in G major (one sharp) and 3/4 time. It features a variety of rhythmic patterns, including eighth and sixteenth notes, and rests. The tempo markings are in beats per minute (♩ = ...). The lyrics 'Quel monde est-ce !' are written above the staff at measure 51. The score is presented in a clean, black-and-white format with standard musical notation.

Satie's Sonatina Bureaucratique (1917)



Satie's Sonatina Bureaucratique (1917)



Satie's Sonatina Bureaucratique (1917)



Satie's Sonatina Bureaucratique (1917)



Satie's Sonatina Bureaucratique (1917)



Satie's Sonatina Bureaucratique (1917)



Satie's Sonatina Bureaucratique (1917)



Satie's Sonatina Bureaucratique (1917)



Satie's Sonatina Bureaucratique (1917)



Satie's Sonatina Bureaucratique (1917)



Satie's Sonatina Bureaucratique (1917)



Combidihozasististe.

Satie's Sonatina Bureaucratique (1917)

119 ♩ = 128,000000

Satie's Sonatina Bureaucratique (1917)

121

Heureux serwaltz!

Satie's Sonatina Bureaucratique (1917)

123

Satie's Sonatina Bureaucratique (1917)

125 ♩ = 112,000000 (p) not the piano = 113,000000

128

Satie's Sonatina Bureaucratique (1917)

130

Satie's Sonatina Bureaucratique (1917)

133

Satie's Sonatina Bureaucratique (1917)

134

Notre ami s'interroge sur bien et mal. (He) asks himself questions.

Satie's Sonatina Bureaucratique (1917)

137

Satie's Sonatina Bureaucratique (1917)

140

Satie's Sonatina Bureaucratique (1917)

142

Satie's Sonatina Bureaucratique (1917)

Satie's Sonatina Bureaucratique (1917)

Satie's Sonatina Bureaucratique (1917)

L'air froid. The wind permits C to hit his head again.

Satie's Sonatina Bureaucratique (1917)

Satie's Sonatina Bureaucratique (1917)

Satie's Sonatina Bureaucratique (1917)

Satie's Sonatina Bureaucratique (1917)

Satie's Sonatina Bureaucratique (1917)

Satie's Sonatina Bureaucratique (1917)

Satie's Sonatina Bureaucratique (1917)

Satie's Sonatina Bureaucratique (1917)

Le pianissimo continues.

Satie's Sonatina Bureaucratique (1917)

164 $\text{♩} = 134,000061$
 Satie's Sonatina Bureaucratique (1917)

167
 Satie's Sonatina Bureaucratique (1917)

170 $\text{♩} = 128,000000$
 Satie's Sonatina Bureaucratique (1917)

173
 Satie's Sonatina Bureaucratique (1917)

175 $\text{♩} = 126,000000$
 Satie's Sonatina Bureaucratique (1917)

177 $\text{♩} = 117,000114$
 Satie's Sonatina Bureaucratique (1917)

180 $\text{♩} = 116,000076$
 Satie's Sonatina Bureaucratique (1917)

183
 Satie's Sonatina Bureaucratique (1917)

185 $\text{♩} = 126,000130$
 Satie's Sonatina Bureaucratique (1917)

186
 Satie's Sonatina Bureaucratique (1917)

188 $\text{♩} = 128,000000$
 Satie's Sonatina Bureaucratique (1917)

Hil faut quitter son bureau,--
 must leave his office,--
 son bon bureau office.

Satie's Sonatina Bureaucratique (1917)

190

Satie's Sonatina Bureaucratique (1917)

192

Du courage, partons, dit-il.

Satie's Sonatina Bureaucratique (1917)

194 = 140,000137

Courage: let's be off, says he

Satie's Sonatina Bureaucratique (1917)

197

Satie's Sonatina Bureaucratique (1917)

200

Satie's Sonatina Bureaucratique (1917)

203 = 152,000320

Satie's Sonatina Bureaucratique (1917)

206

Satie's Sonatina Bureaucratique (1917)

♩ = 187,00088,0085,00083,0091

30

Musical notation for measures 30-33, featuring a treble clef, a key signature of one sharp (F#), and a 3/4 time signature. The melody consists of eighth and sixteenth notes.

34

Musical notation for measures 34-36, continuing the melody with various rests and note values.

37

sa calotte chinoise skull-cap.

Musical notation for measures 37-39, including the French text "sa calotte chinoise" and the English translation "skull-cap".

40

Musical notation for measures 40-42, featuring a complex rhythmic pattern with many sixteenth notes.

43

Il fait le gredes au jambas;

se pr'hopite dans l'escalier qu'il s'enat sur staires and mounts them upon his back.

Musical notation for measures 43-44, including the French text "Il fait le gredes au jambas;" and the English translation "se pr'hopite dans l'escalier qu'il s'enat sur staires and mounts them upon his back."

45

Musical notation for measures 45-47, continuing the complex rhythmic pattern.

48

Quel What de wim!

Musical notation for measures 48-50, including the French text "Quel What de wim!" and the English translation "What de wim!".

51

Musical notation for measures 51-52, featuring a melodic line with eighth notes.

53

Musical notation for measures 53-54, showing a continuation of the melodic and harmonic material.

55

Musical notation for measures 55-56, concluding the page with a final melodic phrase.

Satie's Sonatina Bureaucratique (1917) $\text{♩} = 95,000115,000084$

58

61

63

65

67

re Maybe field gatugm&ntatasa w&ns avo&re&bs&ng&pt&er&nt&em.

69

72

74

76

78

V.S.

Satie's Sonatina Bureaucratique (1917)

116 $\text{♩} = 128,000000$

Combien d'actes ?

121 $\text{♩} = 131,000079$

125 $\text{♩} = 113,000049$ $\text{♩} = 118,000083$ $\text{♩} = 113,000074$

Hectares ! (Lui, pas le (H)onor the piano)

Tout est effrayant.

129 $\text{♩} = 134,000061$ $\text{♩} = 113,000000$

Le Pharisien s'interroge.

133 $\text{♩} = 130,000034$

Notre ami s'interroge avec bienveillantes questions himself.

136 $\text{♩} = 120,000030$ $\text{♩} = 120,000000$ $\text{♩} = 119,000160$ $\text{♩} = 118,000063$ $\text{♩} = 118,000099$

141 $\text{♩} = 115,000076$

144 $\text{♩} = 115,000076$

146 L'air froid p... revient à se heurter à sa tête.

151 $\text{♩} = 126,000130$

V.S.

Satie's Sonata in B-flat major (1917)

155

Musical notation for measures 155-158, featuring a complex rhythmic pattern with many sixteenth notes and rests.

159

Musical notation for measures 159-162, including a triplet of eighth notes in measure 161.

Le piano continues.

163

Musical notation for measures 163-167, showing a continuation of the complex rhythmic texture.

168

Musical notation for measures 168-172, with dense chordal accompaniment.

173

Musical notation for measures 173-176, featuring a melodic line with a long note in measure 174.

177

Musical notation for measures 177-181, consisting of a steady eighth-note accompaniment.

182

Musical notation for measures 182-185, including the vocal entry.

Hélas! il faut aller se constituer, he office, --

186

Musical notation for measures 186-189, with the piano accompaniment continuing.

190

Musical notation for measures 190-193, including the vocal line.

Du comte: partons, dit-il.

194

Musical notation for measures 194-197, concluding the page.

