

Walton, William - Bagatelle for Classical Guitar No. 3.

$\text{♩} = 57,000031$

Kora

3

Kora

6

tambora

Kora

9

tambora

Kora

12

Kora

15

Kora

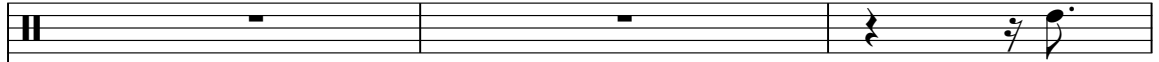
19

Kora

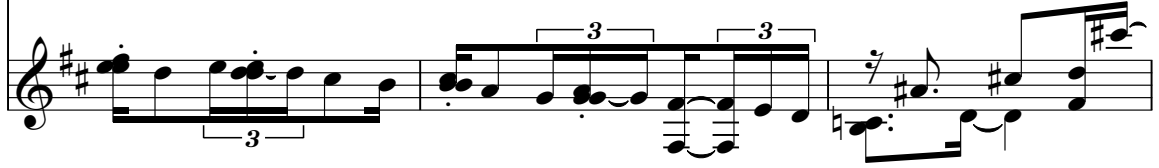
22

Kora

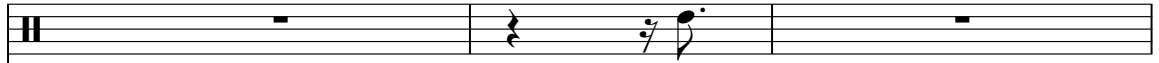
tambora



Kora



tambora



Kora



Kora



Kora



Kora



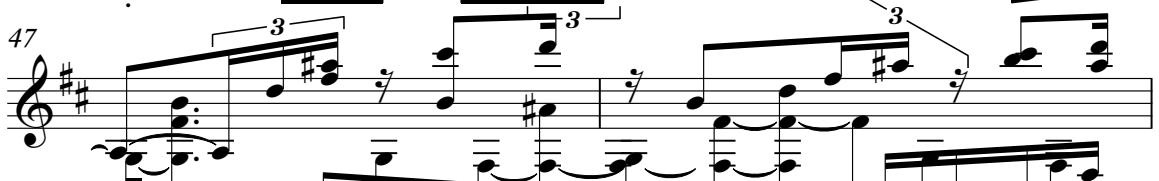
Kora



Kora



Kora



Kora



51

Kora

3

tambora

Walton, William - Bagatelle for Classical Guitar No. 3.

♩ = 57,000031

A musical staff with a treble clef and a double bar line at the beginning. The staff contains six measures. The first measure has a 3/4 time signature and a whole bar line, with a '2' above it. The second measure has a 2/4 time signature and a whole bar line, with a '4' above it. The third measure has a 3/4 time signature and a whole bar line. The fourth measure has a 2/4 time signature and contains a quarter rest followed by a quarter note with a slur and a fermata. The fifth measure has a whole bar line. The sixth measure has a 2/4 time signature and contains a quarter rest followed by a quarter note with a slur and a fermata.

11 17 22

A musical staff with a treble clef and a double bar line at the beginning. The staff contains six measures. The first measure has a whole bar line, with a '11' above it. The second measure has a quarter rest followed by a quarter note with a slur and a fermata, with a '17' above it. The third measure has a whole bar line. The fourth measure has a quarter rest followed by a quarter note with a slur and a fermata, with a '22' above it. The fifth measure has a whole bar line. The sixth measure has a whole bar line.

Walton, William - Bagatelle for Classical Guitar No. 3.

Kora

♩ = 57,000031

3

6

9

12

16

20

24

28

32

V.S.

2

Kora

35

38

41

45

48

50