

Blitheman, William - An excellent meane

♩ = 117,000114

shawm

cornett

trombone

This system contains the first five measures of the piece. The shawm part begins with a whole rest in measure 1, followed by a melodic line in measures 2-5. The cornett part plays a steady accompaniment throughout. The trombone part also has a whole rest in measure 1 and then joins the melody in measures 2-5. The key signature has one flat (B-flat) and the time signature is 4/4.

♩ = 117,000137

shawm

cornett

trombone

6

This system contains measures 6 through 10. The shawm part has a melodic line with some grace notes. The cornett part continues its accompaniment. The trombone part follows the shawm's melody. Measure 6 is marked with a '6' at the beginning. The key signature and time signature remain the same as in the first system.

shawm

cornett

trombone

11

This system contains measures 11 through 15. The shawm part features a melodic line with a sharp sign (F#) in measure 13. The cornett part continues its accompaniment. The trombone part follows the shawm's melody. Measure 11 is marked with an '11' at the beginning. The key signature and time signature remain the same as in the previous systems.

16

shawm

cornett

trombone

21

♩ = 116,00008406117,000114

shawm

cornett

trombone

26

♩ = 110,000100092

shawm

cornett

trombone

31

♩ = 120,000000

shawm

cornett

trombone

36

shawm

cornett

trombone

41

shawm

cornett

trombone

♩ = 119,000000137

46

shawm

cornett

trombone

♩ = 119,0000000000

50

shawm

cornett

trombone

55

shawm

cornett

trombone

60

shawm

cornett

trombone

65

shawm

cornett

trombone

$\bullet = 119,000160 \bullet = \sharp 118,7000370000815,000011,000092,000038$

Blitheman, William - An excellent meane

shawm

♩ = 117,000114

7 ♩ = 117,000137

13

19 ♩ = 117,000114

25 ♩ = 117,0001092

31 ♩ = 120,000000

37

42 ♩ = 119,000137

47 ♩ = 119,000000

53

V.S.

Blitheman, William - An excellent meane

cornett

♩ = 117,000114

7

♩ = 117,000114

13

19

♩ = 117,000114

25

♩ = 117,000114

31

♩ = 120,000000

37

43

♩ = 117,000114

49

♩ = 117,000114

55

V.S.

2

cornett

61



65

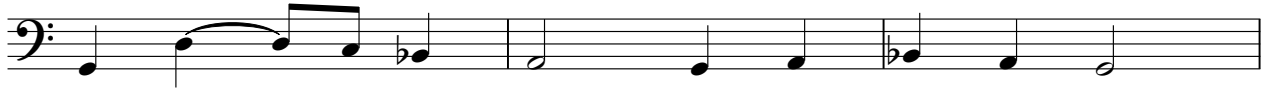
♩ = 119,000160 ♩ = 118,000160 ♩ = 116,000160 ♩ = 114,000160 ♩ = 112,000160 ♩ = 110,000160



2

trombone

63



66 ♪ = 119,000160 ♪ = 118,000117,000114,000105,000103,000100,000038

