

Encina, Juan Del - Ay, triste que vengo

0.0"
0.0:00
Jorge Bayn
Copyright © 1999 de Jorge Bayyn.

♩ = 80,000000

Alto

Tenor

Contra

8

A.

Tenor

Contra

15

A.

Tenor

Contra

22

A.

Tenor

Contra

This system contains measures 22 through 28. The Soprano (A.) part begins with a treble clef and a key signature of one sharp (F#). The Tenor and Contralto (Contra) parts begin with a treble clef and a key signature of one flat (Bb). The music consists of eighth-note patterns in all three parts, with some notes marked with an '8' below them, likely indicating an octave shift.

29

A.

Tenor

Contra

This system contains measures 29 through 35. The Soprano (A.) part continues with the same melodic line. The Tenor and Contralto (Contra) parts continue with their respective eighth-note accompaniment. The key signature remains one sharp for the Soprano and one flat for the other parts.

36

A.

Tenor

Contra

This system contains measures 36 through 42. The Soprano (A.) part continues with the same melodic line. The Tenor and Contralto (Contra) parts continue with their respective eighth-note accompaniment. The key signature remains one sharp for the Soprano and one flat for the other parts.

43

A.

Tenor

Contra

50

A.

Tenor

Contra

57

A.

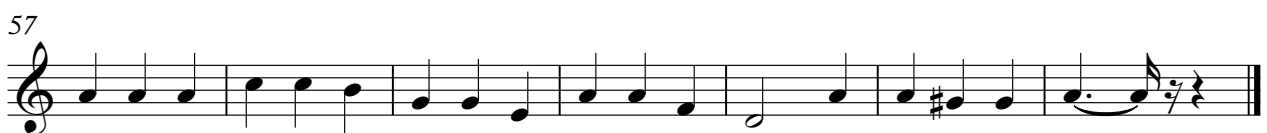
Tenor

Contra

Alto

Encina, Juan Del - Ay, triste que vengo

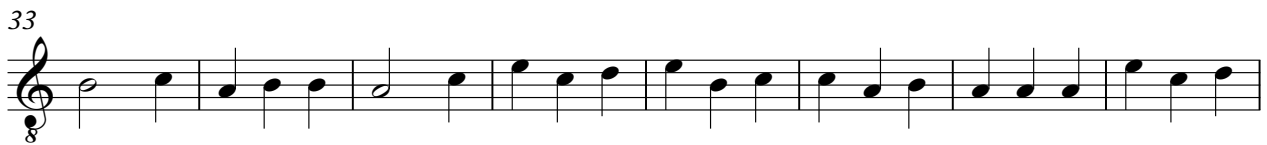
♩ = 80,000000



Tenor

Encina, Juan Del - Ay, triste que vengo

♩ = 80,000000



Contra

Encina, Juan Del - Ay, triste que vengo

♩ = 80,000000

