

Gervaise, Claude - Bransle Simple

$\text{♩} = 120,000000$

Descant Recorder

Descant Recorder

Percussion

Harpsichord

$\text{♩} = 120,000000$

Viola

7

D. Rec.

D. Rec.

Perc.

Hpsd.

Vla.

14

D. Rec.

D. Rec.

Perc.

Hpsd.

Vla.

This musical system covers measures 14 through 20. It features four staves: two for D. Rec. (top), Perc. (middle), Hpsd. (middle), and Vla. (bottom). The D. Rec. staves have treble clefs and a key signature of one sharp (F#). The Perc. staff has a drum set icon. The Hpsd. staff has a treble clef. The Vla. staff has a bass clef. The music consists of eighth and sixteenth notes, with some rests and a dotted quarter note. A fermata is placed over the final note of the top D. Rec. staff in measure 20.

21

D. Rec.

D. Rec.

Perc.

Hpsd.

Vla.

This musical system covers measures 21 through 27. It features the same four staves as the previous system. The D. Rec. staves have treble clefs and a key signature of one sharp (F#). The Perc. staff has a drum set icon. The Hpsd. staff has a treble clef. The Vla. staff has a bass clef. The music continues with eighth and sixteenth notes. A triplet of eighth notes is marked with a '3' above it in measure 24. A fermata is placed over the final note of the top D. Rec. staff in measure 27.

28

D. Rec.

D. Rec.

Hpsd.

Vla.

Detailed description: This system contains measures 28 through 36. The top two staves are for two different recordings of the double bass (D. Rec.). The third staff is for the harpsichord (Hpsd.), and the bottom staff is for the viola (Vla.). The music is in a 3/4 time signature. The key signature has one sharp (F#). The double bass parts feature a mix of eighth and sixteenth notes, often beamed together. The harpsichord and viola parts provide harmonic support with chords and moving lines.

37

D. Rec.

D. Rec.

Perc.

Hpsd.

Vla.

Detailed description: This system contains measures 37 through 42. The top two staves are for two different recordings of the double bass (D. Rec.). The third staff is for the percussion (Perc.), showing a rhythmic pattern of eighth notes with accents. The fourth staff is for the harpsichord (Hpsd.), and the bottom staff is for the viola (Vla.). The music continues in the same 3/4 time signature and key signature. A triplet of eighth notes is marked with a '3' above it in the percussion part at the end of measure 42.

43

♩ = 109,99999999999999 ♩ = 820,99999999999999

D. Rec.

Musical notation for two D. Rec. staves. The top staff starts with a treble clef and a key signature of one sharp (F#). The bottom staff starts with a treble clef and a key signature of one sharp (F#). Both staves contain rhythmic patterns of eighth and quarter notes.

D. Rec.

Perc.

Musical notation for Percussion. The staff uses a percussion clef and contains a rhythmic pattern of eighth notes with accents. A triplet of eighth notes is marked with a '3' above it.

Hpsd.

Musical notation for Hpsd. The staff uses a treble clef and contains a rhythmic pattern of eighth notes.

Vla.

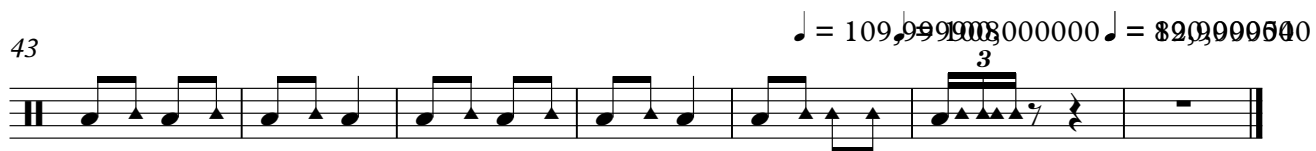
Musical notation for Vla. The staff uses a bass clef and contains a rhythmic pattern of eighth notes.

♩ = 109,99999999999999 ♩ = 820,99999999999999

Percussion

Gervaise, Claude - Bransle Simple

♩ = 120,000000



Harpisichord

Gervaise, Claude - Bransle Simple

♩ = 120,000000



