

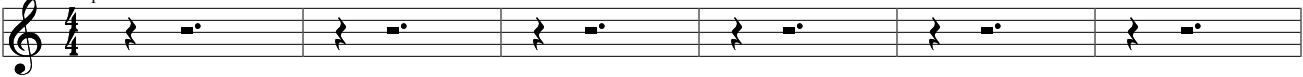
Resistance

Muse
The Resistance

Standard tuning

Moderate ♩ = 135


S-Gt **Intro**



1

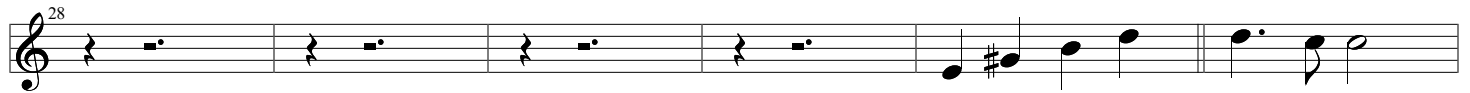


Intro 2



Is our secret safe tonight?


Verse 1



And are we out of sight? Or will our world come tumbling down?



Will they find our hiding place? Is this our last embrace? Or will the walls start



If we live a life in fear, I'll wait a thousand years

Verse 2



just to see you smile again. Kill your prayer for love and peace.



You'll wake the thought police. We can hide the truth inside.



(It could be wrong, could be wrong) But it should've been right. (It could be wrong, could be wrong) To let our hearts ignite.

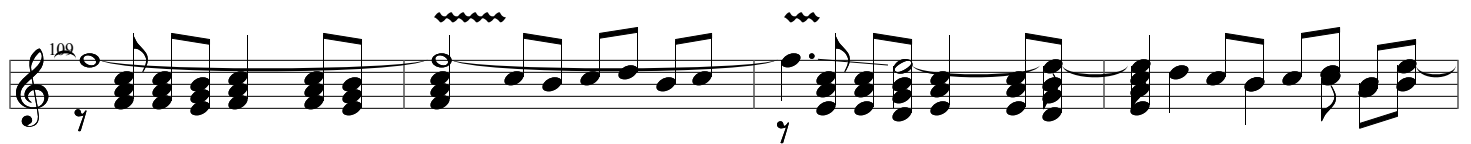
Pre-Chorus 2



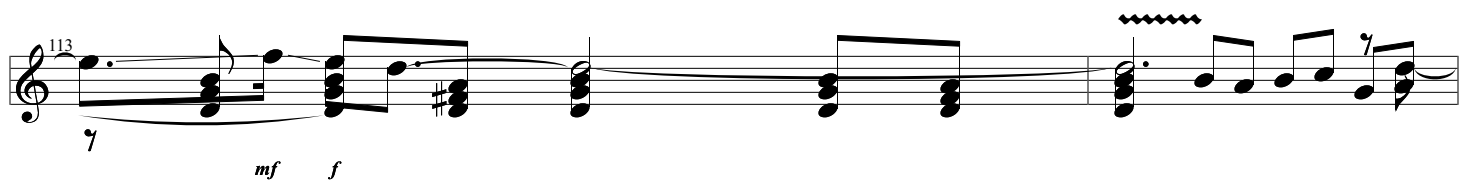
(It could be wrong, could be wrong) Are we digging a hole? (It could be wrong, could be wrong) This is out of control.



(It could be wrong, could be wrong) It could never last. (It could be wrong, could be wrong) Must erase it fast.



(It could be wrong, could be wrong) But it should've been right.



(It could be wrong, could be...) Love is our re-

They'll keep us apart and they

Chorus 2

Musical staff starting at measure 115. It features a series of chords in the first five measures, followed by a melodic line in the last four measures.

won't stop breaking us down.

Hold me.

Our lips must

Musical staff starting at measure 120. It continues the melodic line from the previous staff, with some notes tied across measures.

always be sealed.

The night has

reached its end.

Break

Musical staff starting at measure 126. It features a melodic line with some rests and ties.

We can't pretend.

We must run.

We must run.

Build up

Musical staff starting at measure 132. It features a melodic line that builds up in intensity, with some notes tied across measures.

It's time to run.

Musical staff starting at measure 140. It features a melodic line with a triplet of notes in measure 146.

Take us away from here.

Pro- tect us from fur-

-ther harm.

Break down

Musical staff starting at measure 148. It features a melodic line with some notes tied across measures.

RE-

-SIS-

-TANCE!

Musical staff starting at measure 152. It features a melodic line with some notes tied across measures. The word "Outro" is written above the staff.

Musical staff starting at measure 161. It features a series of chords in the first five measures.

$\text{♩} = 135 \text{ rall.}$ -----

rall. - - ♩ = 84

172



A musical staff with a treble clef. Above the staff, the tempo marking "rall." is followed by a double bar line and a quarter note symbol with "84" next to it. Below the staff, the number "172" is written. The staff contains a single measure with a fermata symbol over it.