

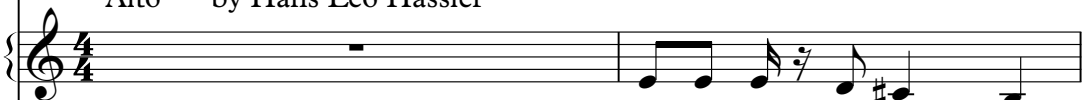
# Hassler, Hans L. - Kyrie

♩ = 85,000046


Sop. Kyrie frm "Missa Secunda"

Lead 6 (Voice) 

Alto by Hans Leo Hassler

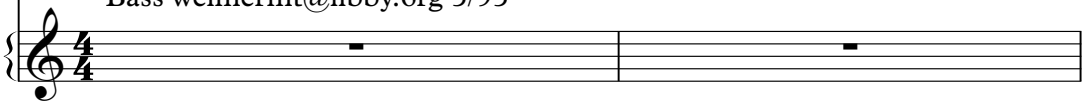
Lead 6 (Voice) 

Tenor MIDI by Marty Weimer

Lead 6 (Voice) 

♩ = 85,000046

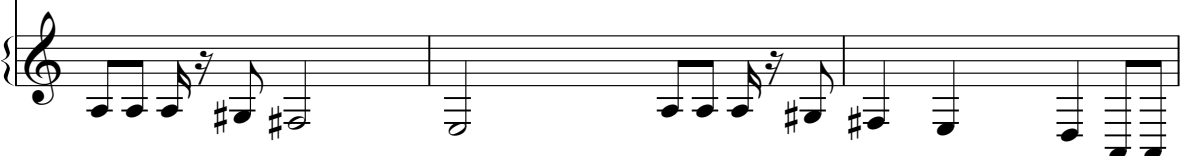
Bass weimermt@libby.org 5/95

Lead 6 (Voice) 

Lead 6 

Lead 6 

Lead 6 

Lead 6 

6

Lead 6

Lead 6

Lead 6

Lead 6

Detailed description: This system contains four staves of music, each labeled 'Lead 6'. The first staff begins with a measure rest followed by a melodic line. The second staff features a melodic line with a slur over the first two measures. The third staff has a melodic line with a slur over the second measure. The fourth staff contains a guitar tablature with numbers 1-4 on the first four strings, indicating a specific fretting pattern.

9

Lead 6

Lead 6

Lead 6

Lead 6

Detailed description: This system contains four staves of music, each labeled 'Lead 6'. The first staff shows a melodic line with a slur over the first two measures. The second staff has a melodic line with a slur over the last two measures. The third staff features a melodic line with a slur over the last two measures. The fourth staff contains a guitar tablature with numbers 1-4 on the first four strings, indicating a specific fretting pattern.

13

Lead 6

Lead 6

Lead 6

Detailed description: This block contains three staves of musical notation for measures 13, 14, and 15. The top staff (Lead 6) begins with a treble clef and a key signature of one sharp (F#). It contains a melodic line with eighth and quarter notes, including rests. The middle staff (Lead 6) contains a bass line with eighth and quarter notes, including rests. The bottom staff (Lead 6) is mostly empty, with a few notes at the end of the measure.

16

Lead 6

Lead 6

Lead 6

Lead 6

Detailed description: This block contains four staves of musical notation for measures 16, 17, and 18. The top staff (Lead 6) has a treble clef and a key signature of one sharp (F#). It features a sparse melodic line with rests and eighth notes. The second staff (Lead 6) contains a more active bass line with eighth and quarter notes. The third staff (Lead 6) contains a melodic line with eighth and quarter notes. The bottom staff (Lead 6) contains a complex bass line with many beamed eighth notes and quarter notes.

19

Lead 6

Lead 6

Lead 6

Lead 6

Detailed description: This block contains musical notation for measures 19, 20, and 21. It consists of four staves, each labeled 'Lead 6'. The first staff has a treble clef and a key signature of one sharp (F#). Measure 19 starts with a whole note F#4, followed by a quarter rest, a quarter note G4, and a quarter note A4. Measure 20 has a quarter note B4, a quarter note C5, a quarter note B4, and a quarter note A4. Measure 21 has a whole note G4. The second staff has a treble clef and a key signature of one sharp. Measure 19 starts with a quarter note F#4, followed by a quarter note G4, a quarter note A4, and a quarter note B4. Measure 20 has a quarter note C5, a quarter note B4, a quarter note A4, and a quarter note G4. Measure 21 has a quarter note F#4, a quarter note E4, and a whole note D4. The third staff has a treble clef and a key signature of one sharp. Measure 19 has a quarter note F#4, a quarter note G4, a quarter note A4, and a quarter note B4. Measure 20 has a quarter note C5, a quarter note B4, a quarter note A4, and a quarter note G4. Measure 21 has a quarter note F#4, a quarter note E4, and a whole note D4. The fourth staff has a treble clef and a key signature of one sharp. Measure 19 has a quarter note F#4, a quarter note G4, a quarter note A4, and a quarter note B4. Measure 20 has a quarter note C5, a quarter note B4, a quarter note A4, and a quarter note G4. Measure 21 has a quarter note F#4, a quarter note E4, and a whole note D4.

22

Lead 6

Lead 6

Lead 6

Lead 6

Detailed description: This block contains musical notation for measures 22, 23, and 24. It consists of four staves, each labeled 'Lead 6'. The first staff has a treble clef and a key signature of one sharp. Measure 22 has a whole rest. Measure 23 has a quarter note B4, a quarter note A4, a quarter note G4, and a quarter note F#4. Measure 24 has a quarter note E4, a quarter note D4, and a whole note C4. The second staff has a treble clef and a key signature of one sharp. Measure 22 has a whole rest. Measure 23 has a quarter note G4, a quarter note F#4, a quarter note E4, and a quarter note D4. Measure 24 has a quarter note C4, a quarter note B3, a quarter note A3, and a quarter note G3. The third staff has a treble clef and a key signature of one sharp. Measure 22 has a quarter note G4, a quarter note F#4, a quarter note E4, and a quarter note D4. Measure 23 has a quarter note C4, a quarter note B3, a quarter note A3, and a quarter note G3. Measure 24 has a quarter note F#3, a quarter note E3, a quarter note D3, and a quarter note C3. The fourth staff has a treble clef and a key signature of one sharp. Measure 22 has a whole rest. Measure 23 has a quarter note G4, a quarter note F#4, a quarter note E4, and a quarter note D4. Measure 24 has a quarter note C4, a quarter note B3, a quarter note A3, and a quarter note G3.

25

Lead 6

Musical notation for measures 25-27, four staves labeled "Lead 6". The notation is in treble clef with a key signature of one sharp (F#). Measure 25 features a melodic line with a dotted quarter note, a quarter note, and a half note. Measure 26 includes a quarter rest followed by a quarter note, and a quarter note. Measure 27 contains a quarter note, a quarter note, and a quarter note. The fourth staff shows a bass line with a half note, a quarter note, and a quarter note.

28

Lead 6

Musical notation for measures 28-31, four staves labeled "Lead 6". The notation is in treble clef with a key signature of one sharp (F#). Measure 28 features a melodic line with a quarter note, a quarter note, and a quarter note. Measure 29 includes a quarter note, a quarter note, and a quarter note. Measure 30 contains a quarter note, a quarter note, and a quarter note. Measure 31 shows a quarter note, a quarter note, and a quarter note. The fourth staff shows a bass line with a half note, a quarter note, and a quarter note.

6

30 ♪ = 80,000000 ♪ = 75710000038 ♪ = 67600999173 ♪ = 5559000723 ♪ = 48000008996

Lead 6

Lead 6

Lead 6

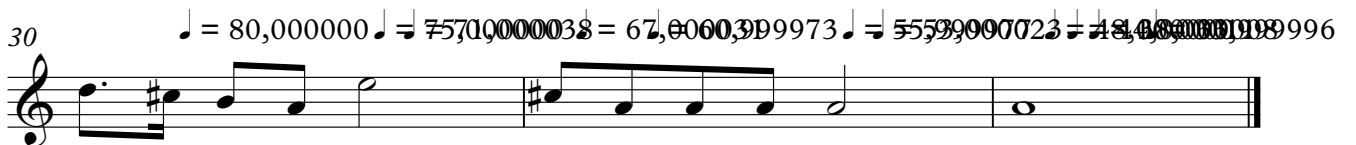
♪ = 80,000000 ♪ = 75710000038 ♪ = 67600999173 ♪ = 5559000723 ♪ = 48000008996

Lead 6

Hassler, Hans L. - Kyrie

Lead 6 (Voice)

♩ = 85,000046  
Sop. Kyrie frm "Missa Secunda"

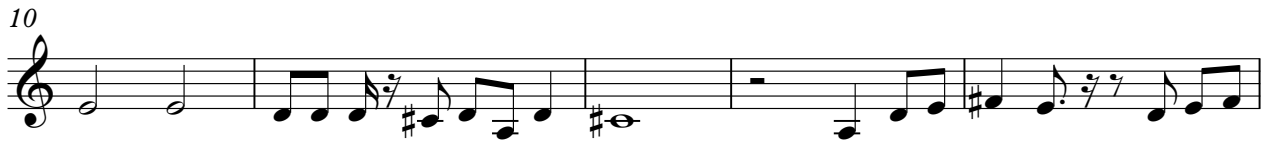


# Hassler, Hans L. - Kyrie

## Lead 6 (Voice)

♩ = 85,000046

Alto by Hans Leo Hassler







# Hassler, Hans L. - Kyrie

## Lead 6 (Voice)

♩ = 85,000046

Bass weimermt@libby.org 5/95

2

7

12

3

19

24

28

♩ = 80,0000000071,0000000073,0000000086