

# Hotteterre, Jean - La noce champetre - Julio Feliz

$\text{♩} = 89,999954$

Oboe

Harpsichord

Violin

This system contains the first three staves of the score. The Oboe part is in treble clef, the Harpsichord in bass clef, and the Violin in treble clef. All are in 3/4 time. The tempo is marked as quarter note = 89,999954. The Oboe part begins with a half note G4, followed by quarter notes A4, B4, and C5. The Harpsichord part starts with a half note G3, followed by quarter notes A3, B3, and C4. The Violin part starts with a half note G3, followed by quarter notes A3, B3, and C4.

6

Ob.

Hpsd.

Vln.

This system contains staves 4, 5, and 6. The Oboe part continues with quarter notes D4, E4, F4, and G4. The Harpsichord part continues with quarter notes D3, E3, F3, and G3. The Violin part continues with quarter notes D4, E4, F4, and G4. A triplet of eighth notes (G4, A4, B4) is marked with a '3' below it.

12

Ob.

Hpsd.

Vln.

This system contains staves 7, 8, and 9. The Oboe part continues with quarter notes A4, B4, and C5. The Harpsichord part continues with quarter notes D3, E3, F3, and G3. The Violin part continues with quarter notes D4, E4, F4, and G4.

18

Ob.

Hpsd.

Vln.

24

Ob.

Hpsd.

Vln.

30

Ob.

Hpsd.

Vln.

35

Ob.

Hpsd.

Vln.

$\text{♩} = 85,000000$   $\text{♩} = 75,999999$

$\text{♩} = 85,000000$   $\text{♩} = 75,999999$

3

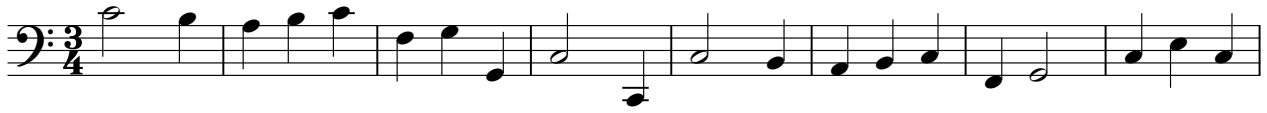
Oboe

Hotteterre, Jean - La noce champetre - Julio Feliz

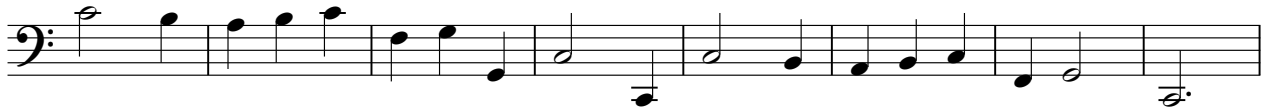
♩ = 89,999954



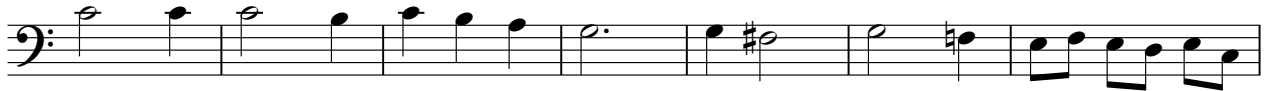
♩ = 89,999954



9



17



24



32



36

♩ = 85,000000 = 75,000000



Violin

Hotteterre, Jean - La noce champetre - Julio Feliz

♩ = 89,999954

8

14

21

27

33

37

♩ = 85,00004680,000000 ♩ = 75,00000985 ♩ = 64,