

Hotteterre, Jean - La noce champetre - Julio Feliz

♩ = 109,999908

Flute

Oboe

Harpsichord

This system contains the first five measures of the piece. It features three staves: Flute (top), Oboe (middle), and Harpsichord (bottom). The Flute and Oboe parts are in treble clef with a key signature of one flat (B-flat) and a 3/4 time signature. The Harpsichord part is in bass clef with the same key signature and time signature. The tempo is marked as ♩ = 109,999908. The Flute part begins with a quarter rest followed by a series of eighth and quarter notes. The Oboe part starts with a quarter note, followed by eighth and quarter notes. The Harpsichord part begins with a quarter note, followed by eighth and quarter notes.

6

Fl.

Ob.

Hpsd.

This system contains measures 6 through 10. The Flute part continues with eighth and quarter notes. The Oboe part features a prominent sixteenth-note pattern. The Harpsichord part continues with a steady eighth-note accompaniment.

12

Fl.

Ob.

Hpsd.

This system contains measures 12 through 15. The Flute part has a quarter rest in measure 12, then continues with eighth and quarter notes. The Oboe part maintains its sixteenth-note pattern. The Harpsichord part continues with eighth notes.

17

Fl.

Ob.

Hpsd.

22

Fl.

Ob.

Hpsd.

27

Fl.

Ob.

Hpsd.

33

Fl.
Ob.
Hpsd.

This system contains measures 33 through 37. The Flute (Fl.) part is in the upper staff, the Oboe (Ob.) part is in the middle staff, and the Harpsichord (Hpsd.) part is in the lower staff. The key signature has one sharp (F#) and the time signature is 4/4. Measure 33 starts with a treble clef and a key signature change to one sharp. The Flute part features a melodic line with eighth and quarter notes. The Oboe part provides harmonic support with eighth and quarter notes, including some slurs. The Harpsichord part plays a steady eighth-note accompaniment.

38

Fl.
Ob.
Hpsd.

This system contains measures 38 through 40. The Flute (Fl.) part is in the upper staff, the Oboe (Ob.) part is in the middle staff, and the Harpsichord (Hpsd.) part is in the lower staff. The key signature has one sharp (F#) and the time signature is 4/4. Measure 38 starts with a treble clef. The Flute part continues its melodic line. The Oboe part has a more active role with slurs and eighth-note patterns. The Harpsichord part continues with a simple accompaniment.

41

Fl.
Ob.
Hpsd.

This system contains measures 41 through 44. The Flute (Fl.) part is in the upper staff, the Oboe (Ob.) part is in the middle staff, and the Harpsichord (Hpsd.) part is in the lower staff. The key signature has one sharp (F#) and the time signature is 4/4. Measure 41 starts with a treble clef. The Flute part has a melodic line with some slurs. The Oboe part has a more active role with slurs and eighth-note patterns. The Harpsichord part continues with a simple accompaniment.

Flute

Hotteterre, Jean - La noce champetre - Julio Feliz

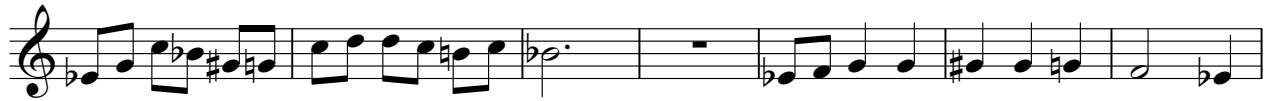
♩ = 109,999908



7



14



21



29



37



41



Oboe

Hotteterre, Jean - La noce champetre - Julio Feliz

♩ = 109,999908



♩ = 109,999908

9

17

24

32

38