

# Lassus, Orlandus - Matona Mia Cara

0.0"  
1.1,00  
© 1999 by Perfect Notes, Inc. All Rights Reserved.  
Perfect Notes, Inc. 10075 North Wilshire Blvd, Suite 100, Beverly Hills, CA 90210

♩ = 190,000290

canto - Matona mia cara

Alto - Orlando di Lasso

Tenore - sequenced by

Basso - A. Bender 8/97

5

canto - Matona mia cara

Alto - Orlando di Lasso

Tenore - sequenced by

Basso - A. Bender 8/97

10

canto - Matona mia cara

Alto - Orlando di Lasso

Tenore - sequenced by

Basso - A. Bender 8/97

14

canto - Matona mia cara

Alto - Orlando di Lasso

Tenore - sequenced by

Basso - A. Bender 8/97

18

canto - Matona mia cara

Alto - Orlando di Lasso

Tenore - sequenced by

Basso - A. Bender 8/97

22

canto - Matona mia cara

Alto - Orlando di Lasso

Tenore - sequenced by

Basso - A. Bender 8/97

26

canto - Matona mia cara

Alto - Orlando di Lasso

Tenore - sequenced by

Basso - A. Bender 8/97

This musical score block covers measures 26 through 29. It features four vocal parts: Canto (Soprano), Alto, Tenore (Tenor), and Basso (Bass). The music is in a minor key, indicated by one flat in the key signature. The Canto part begins with a rest in measure 26, followed by a melodic line. The Alto part has a similar melodic line. The Tenore part consists of a sequence of chords, with a 'sequenced by' annotation. The Basso part provides a bass line with a similar melodic contour to the other parts. The score ends with a double bar line and repeat signs in measure 29.

30

canto - Matona mia cara

Alto - Orlando di Lasso

Tenore - sequenced by

Basso - A. Bender 8/97

This musical score block covers measures 30 through 33. It features the same four vocal parts as the previous block: Canto, Alto, Tenore, and Basso. The music continues in the same minor key. The Canto part has a melodic line with a rest in measure 30. The Alto part has a similar melodic line. The Tenore part consists of a sequence of chords, with a 'sequenced by' annotation. The Basso part provides a bass line with a similar melodic contour to the other parts. The score ends with a double bar line and repeat signs in measure 33.

34

canto - Matona mia cara

Alto - Orlando di Lasso

Tenore - sequenced by

Basso - A. Bender 8/97

38

canto - Matona mia cara

Alto - Orlando di Lasso

Tenore - sequenced by

Basso - A. Bender 8/97

42

canto - Matona mia cara

Alto - Orlando di Lasso

Tenore - sequenced by

Basso - A. Bender 8/97

46

canto - Matona mia cara

Alto - Orlando di Lasso

Tenore - sequenced by

Basso - A. Bender 8/97

50

canto - Matona mia cara

Alto - Orlando di Lasso

Tenore - sequenced by

Basso - A. Bender 8/97

54

canto - Matona mia cara

Alto - Orlando di Lasso

Tenore - sequenced by

Basso - A. Bender 8/97

58

canto - Matona mia cara

Alto - Orlando di Lasso

Tenore - sequenced by

Basso - A. Bender 8/97

62

canto - Matona mia cara

Alto - Orlando di Lasso

Tenore - sequenced by

Basso - A. Bender 8/97



66

canto - Matona mia cara

Alto - Orlando di Lasso

Tenore - sequenced by

Basso - A. Bender 8/97

70

canto - Matona mia cara

Alto - Orlando di Lasso

Tenore - sequenced by

Basso - A. Bender 8/97

74

canto - Matona mia cara

Alto - Orlando di Lasso

Tenore - sequenced by

Basso - A. Bender 8/97

78

canto - Matona mia cara

Alto - Orlando di Lasso

Tenore - sequenced by

Basso - A. Bender 8/97

82

canto - Matona mia cara

Alto - Orlando di Lasso

Tenore - sequenced by

Basso - A. Bender 8/97

86

canto - Matona mia cara

Alto - Orlando di Lasso

Tenore - sequenced by

Basso - A. Bender 8/97

90

canto - Matona mia cara

Alto - Orlando di Lasso

Tenore - sequenced by

Basso - A. Bender 8/97

94

canto - Matona mia cara

Alto - Orlando di Lasso

Tenore - sequenced by

Basso - A. Bender 8/97

98

canto - Matona mia cara

Alto - Orlando di Lasso

Tenore - sequenced by

Basso - A. Bender 8/97

102

canto - Matona mia cara

Alto - Orlando di Lasso

Tenore - sequenced by

Basso - A. Bender 8/97

106

canto - Matona mia cara

Alto - Orlando di Lasso

Tenore - sequenced by

Basso - A. Bender 8/97

This musical system covers measures 106 to 109. It features four vocal staves: Canto (Soprano), Alto, Tenore (Tenor), and Basso (Bass). The music is in a minor key, indicated by two flats in the key signature. The Canto part begins with a half note G4, followed by quarter notes A4, Bb4, and A4, then a half note G4. The Alto part starts with a half note G4, followed by quarter notes A4, B4, C5, D5, E5, and F5. The Tenore part begins with a half note G3, followed by quarter notes A3, B3, C4, and D4. The Basso part starts with a half note G2, followed by quarter notes A2, B2, C3, and D3. The system concludes with a double bar line at the end of measure 109.

110

canto - Matona mia cara

Alto - Orlando di Lasso

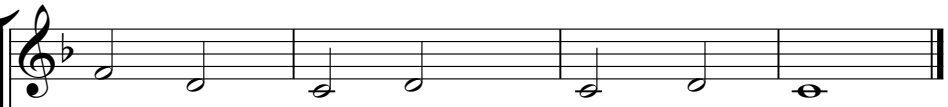
Tenore - sequenced by

Basso - A. Bender 8/97

This musical system covers measures 110 to 113. It features the same four vocal staves as the previous system. The Canto part begins with a half note G4, followed by quarter notes A4, B4, and A4, then a half note G4. The Alto part starts with a half note G4, followed by quarter notes A4, B4, C5, D5, E5, and F5. The Tenore part begins with a half note G3, followed by quarter notes A3, B3, C4, and D4. The Basso part starts with a half note G2, followed by quarter notes A2, B2, C3, and D3. The system concludes with a double bar line at the end of measure 113.

113 ♩ = 172,000107,999939 = 165,9999847 ♩ = 162,000108,000000000000

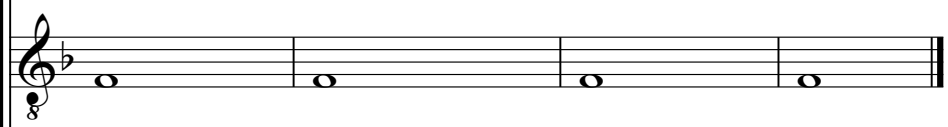
canto - Matona mia cara



Alto - Orlando di Lasso



Tenore - sequenced by



Basso - A. Bender 8/97



Lassus, Orlandus - Matona Mia Cara

canto - Matona mia cara

♩ = 190,000290



V.S.

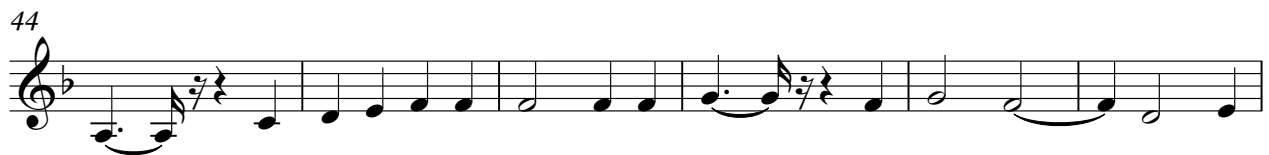
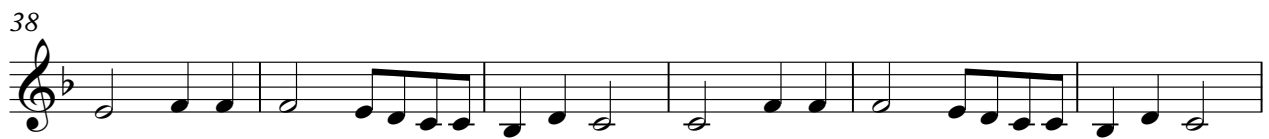


62

Lassus, Orlandus - Matona Mia Cara

Alto - Orlando di Lasso

♩ = 190,000290



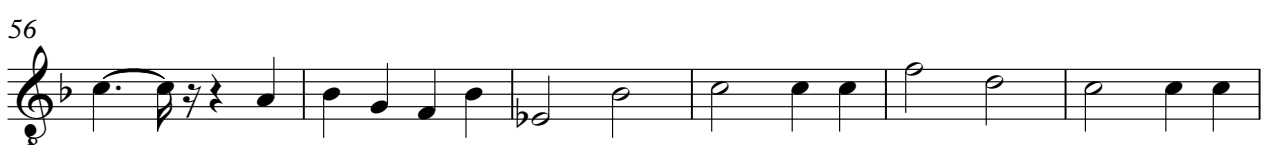
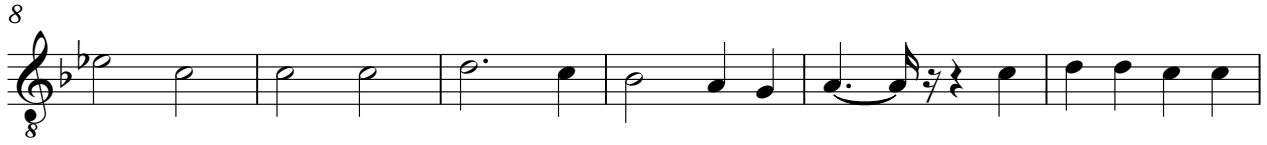
V.S.



Lassus, Orlandus - Matona Mia Cara

Tenore - sequenced by

♩ = 190,000290



V.S.



♩ = 190,000290



8



14



20



26



32



38



44



50



54



59



65



71



77



83



89



95



101



107



112

♩ = 172,000000 ♪ = 165,999939 ♪ = 162,000000 ♪ = 100,000000

