

Handel, Georg Friedrich - Judas Maccabaeus - Ken Whitcomb

♩ = 66,000069

Bassoon

Violin I

Violin II

Viola

Cello

Double Bass

Copyright © 1998 Ken Whitcomb
All Rights Reserved

This musical score page, numbered 2, features six staves for different instruments. The top staff is for Bassoon, starting with a triplet of notes. Below it are Violin I, Violin II, Viola, Cello, and Double Bass. The Violin I and II parts consist of eighth-note patterns. The Viola, Cello, and Double Bass parts play a steady eighth-note accompaniment. The score is written in a key signature of two flats and a 3/4 time signature.

5

Oboe I

Oboe II

Bassoon

Soprano

Alto

Tenor

Bass

Violin I

Violin II

Viola

Cello

Double Bass

Detailed description: This is a page of a musical score, page 3, starting at measure 5. The score is for a full orchestra and vocal ensemble. The instruments and voices are arranged in two systems. The top system includes Oboe I, Oboe II, Bassoon, Soprano, Alto, Tenor, and Bass. The bottom system includes Violin I, Violin II, Viola, Cello, and Double Bass. The key signature is three flats (B-flat, E-flat, A-flat), and the time signature is 3/8. The vocal parts (Soprano, Alto, Tenor, Bass) have lyrics written below the notes. The instrumental parts are written in their respective staves with various rhythmic values and articulations. The page number '5' is written above the first measure of the Oboe I staff.

7

Oboe I

Oboe II

Bassoon

Soprano

Alto

Tenor

Bass

Violin I

Violin II

Viola

Cello

Double Bass

Detailed description: This is a page of a musical score, page 4, starting at measure 7. The score is arranged in a system with 11 staves. The top three staves are for woodwinds: Oboe I, Oboe II, and Bassoon. The next three staves are for vocalists: Soprano, Alto, and Tenor. The bottom five staves are for strings: Bass, Violin I, Violin II, Viola, and Double Bass. The key signature is B-flat major (two flats). The time signature is 4/4. The woodwinds and vocalists have melodic lines with various note values and rests. The strings play a rhythmic accompaniment of eighth notes. The Soprano and Alto parts have a significant rest in measure 7.

9

Oboe I

Oboe II

Bassoon

Soprano

Alto

Tenor

Bass

Violin I

Violin II

Viola

Cello

Double Bass

Detailed description: This is a page of a musical score, page 5, starting at measure 9. The score is arranged in a system with 12 staves. The top three staves are for woodwinds: Oboe I, Oboe II, and Bassoon. The next four staves are for voices: Soprano, Alto, Tenor, and Bass. The bottom five staves are for strings: Violin I, Violin II, Viola, Cello, and Double Bass. The key signature has two flats (B-flat and E-flat), and the time signature is 3/4. The woodwinds play mostly half notes and quarter notes. The vocal parts have a more melodic line with some eighth notes. The string parts are playing a rhythmic accompaniment, with the violins and viola playing eighth notes and the cellos and double basses playing quarter notes.

11

Oboe I

Oboe II

Bassoon

Soprano

Alto

Tenor

Bass

Violin I

Violin II

Viola

Cello

Double Bass

Detailed description: This page of a musical score, numbered 11, features a key signature of two flats (B-flat and E-flat) and a common time signature. The score is divided into two systems. The first system includes Oboe I, Oboe II, Bassoon, Soprano, Alto, Tenor, and Bass. The Oboe parts play sustained notes, while the Bassoon has a more active line. The vocal parts (Soprano, Alto, Tenor, Bass) feature a rhythmic pattern of eighth notes with beams. The second system includes Violin I, Violin II, Viola, Cello, and Double Bass. The string parts are written in a 12/8 time signature and consist of rhythmic eighth-note patterns. The Violin I and II parts are in the treble clef, while the Viola, Cello, and Double Bass parts are in the bass clef.

13

Oboe I

Oboe II

Bassoon

Soprano

Alto

Tenor

Bass

Violin I

Violin II

Viola

Cello

Double Bass

Detailed description: This is a page of a musical score, page 7, starting at measure 13. The score is arranged in a system with 11 staves. The top three staves are for woodwinds: Oboe I, Oboe II, and Bassoon. The next four staves are for voices: Soprano, Alto, Tenor, and Bass. The bottom four staves are for strings: Violin I, Violin II, Viola, Cello, and Double Bass. The key signature is B-flat major (two flats). The time signature is 4/4. The woodwinds and voices have melodic lines with some rests and phrasing slurs. The strings play a rhythmic accompaniment with eighth and quarter notes. The Alto part has a steady eighth-note pattern. The Tenor and Bass parts have melodic lines with some phrasing. The Violin I and II parts have a rhythmic pattern with some melodic movement. The Viola, Cello, and Double Bass parts have a steady eighth-note accompaniment.

15

Oboe I

Oboe II

Bassoon

Soprano

Alto

Tenor

Bass

Violin I

Violin II

Viola

Cello

Double Bass

Detailed description: This is a page of a musical score, page 8, starting at measure 15. The score is for a full orchestra and a vocal ensemble. The instruments and voices are arranged in two systems. The top system includes Oboe I, Oboe II, Bassoon, Soprano, Alto, Tenor, and Bass. The bottom system includes Violin I, Violin II, Viola, Cello, and Double Bass. The key signature is three flats (B-flat, E-flat, A-flat), and the time signature is 3/4. The Oboe I and II parts are mostly rests, with some notes in the second measure. The Bassoon part has a melodic line starting in the first measure. The vocal parts (Soprano, Alto, Tenor, Bass) have lyrics and melodic lines. The string parts (Violin I, Violin II, Viola, Cello, Double Bass) provide harmonic support with various rhythmic patterns.

17

Oboe I

Oboe II

Bassoon

Soprano

Alto

Tenor

Bass

Violin I

Violin II

Viola

Cello

Double Bass

Detailed description: This page of a musical score contains measures 17 and 18. The score is for a full orchestra and vocal soloists. The woodwind section includes Oboe I and Oboe II, which play a melodic line in measure 17 and then rest in measure 18. The Bassoon plays a rhythmic accompaniment in measure 17. The vocal soloists (Soprano, Alto, Tenor, Bass) have parts in measure 17, with the Soprano and Tenor continuing into measure 18. The string section (Violin I, Violin II, Viola, Cello, Double Bass) provides harmonic support throughout both measures. The key signature has two flats, and the time signature is 3/4. Measure numbers 17 and 18 are indicated at the top of the first staff.

19

Oboe I

Oboe II

Bassoon

Soprano

Alto

Tenor

Bass

Violin I

Violin II

Viola

Cello

Double Bass

Detailed description: This page of a musical score covers measures 19 and 20. The score is for a full orchestra and vocal soloists. The key signature has two flats (B-flat and E-flat), and the time signature is 4/4. The woodwind section includes Oboe I and Oboe II, which play a melodic line starting in measure 19. The Bassoon provides a rhythmic accompaniment. The vocal soloists (Soprano, Alto, Tenor, Bass) have parts in both measures. The string section (Violin I, Violin II, Viola, Cello, Double Bass) provides harmonic support. Measure 19 begins with a rest for the Oboes and Bassoon, while the vocalists and strings enter. Measure 20 continues the melodic and harmonic development.

21

Oboe I

Oboe II

Bassoon

Soprano

Alto

Tenor

Bass

Violin I

Violin II

Viola

Cello

Double Bass

23

Oboe I

Oboe II

Bassoon

Soprano

Alto

Tenor

Bass

Violin I

Violin II

Viola

Cello

Double Bass

Detailed description: This is a page of a musical score, page 12, starting at measure 23. The score is arranged in a system with 11 staves. The top three staves are for woodwinds: Oboe I, Oboe II, and Bassoon. The next four staves are for voices: Soprano, Alto, Tenor, and Bass. The bottom four staves are for strings: Violin I, Violin II, Viola, Cello, and Double Bass. The key signature is B-flat major (two flats). The time signature is 3/4. The woodwinds and voices have melodic lines with some rests. The strings play a rhythmic accompaniment with eighth and sixteenth notes. The page number '12' is in the top left, and the measure number '23' is at the top of the first staff.

25

Oboe I

Oboe II

Bassoon

Soprano

Alto

Tenor

Bass

Violin I

Violin II

Viola

Cello

Double Bass

27 ♩ = 50,000000

Oboe I

Oboe II

Bassoon

Soprano

Alto

Tenor

Bass

♩ = 50,000000

Violin I

Violin II

Viola

Cello

Double Bass

Oboe I

Handel, Georg Friedrich - Judas Maccabaeus - Ken Whitcomb

♩ = 66,000069

4



7



11



16

2

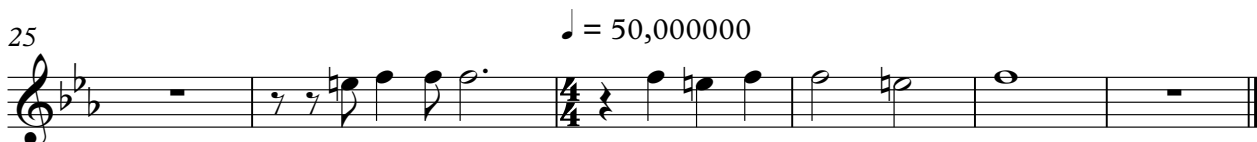


21



25

♩ = 50,000000



Copyright © 1998 Ken Whitcomb
All Rights Reserved

Oboe II

Handel, Georg Friedrich - Judas Maccabaeus - Ken Whitcomb

♩ = 66,000069

4

7

11

16

2

21

25

♩ = 50,000000

4

Copyright © 1998 Ken Whitcomb
All Rights Reserved

Bassoon

Handel, Georg Friedrich - Judas Maccabaeus - Ken Whitcomb

♩ = 66,000069

6

10

14

18

22

25

♩ = 50,000000

Copyright © 1998 Ken Whitcomb
All Rights Reserved

Soprano

Handel, Georg Friedrich - Judas Maccabaeus - Ken Whitcomb

♩ = 66,000069

4

8

11

14

17

20

23

26

♩ = 50,000000

Copyright © 1998 Ken Whitcomb
All Rights Reserved

Alto

Handel, Georg Friedrich - Judas Maccabaeus - Ken Whitcomb

♩ = 66,000069

4

8

11

14

17

20

23

26

♩ = 50,000000

4/4

Copyright © 1998 Ken Whitcomb
All Rights Reserved

Tenor

Handel, Georg Friedrich - Judas Maccabaeus - Ken Whitcomb

♩ = 66,000069

5

8

11

14

18

22

25

♩ = 50,000000

Copyright © 1998 Ken Whitcomb
All Rights Reserved

Handel, Georg Friedrich - Judas Maccabaeus - Ken Whitcomb

Bass

♩ = 66,000069

5

8

11

14

17

21

24

26

♩ = 50,000000

Copyright © 1998 Ken Whitcomb
All Rights Reserved

Violin I

Handel, Georg Friedrich - Judas Maccabaeus - Ken Whitcomb

♩ = 66,000069

3

6

9

12

15

19

23

♩ = 50,000000

26

Copyright © 1998 Ken Whitcomb
All Rights Reserved

Violin II

Handel, Georg Friedrich - Judas Maccabaeus - Ken Whitcomb

♩ = 66,000069



Copyright © 1998 Ken Whitcomb
All Rights Reserved

Viola

Handel, Georg Friedrich - Judas Maccabaeus - Ken Whitcomb

♩ = 66,000069



3



6



9



12



15



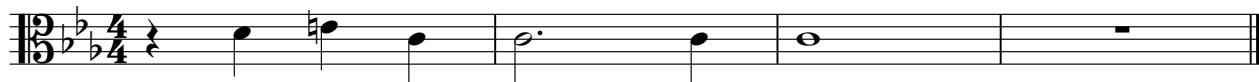
20



24



27 ♩ = 50,000000



Copyright © 1998 Ken Whitcomb
All Rights Reserved

Cello

Handel, Georg Friedrich - Judas Maccabaeus - Ken Whitcomb

♩ = 66,000069



4



7



10



13



16



19



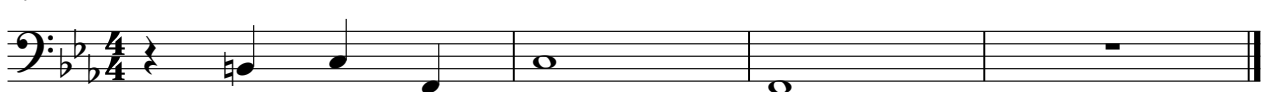
22



25



27 ♩ = 50,000000



Copyright © 1998 Ken Whitcomb
All Rights Reserved

Double Bass

Handel, Georg Friedrich - Judas Maccabaeus - Ken Whitcomb

♩ = 66,000069



4



7



10



13



16



19



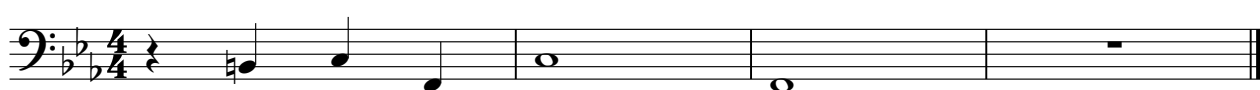
22



25



27 ♩ = 50,000000



Copyright © 1998 Ken Whitcomb
All Rights Reserved