

Handel, Georg Friedrich - Judas Maccabaeus - Ken Whitcomb

♩ = 80,000000

Soprano

Tenor

Harpsichord

♩ = 80,000000

Violin I

Violin II

Cello

Double Bass

Copyright ©1998 Ken Whitcomb  
All Rights Reserved

6

Soprano

Tenor

Harpisichord

Violin I

Violin II

Cello

Double Bass

Detailed description: This block contains the musical score for measures 6 through 10. The score is written for Soprano, Tenor, Harpsichord, Violin I, Violin II, Cello, and Double Bass. The key signature is three sharps (F#, C#, G#) and the time signature is 3/8. The Soprano and Tenor parts feature melodic lines with eighth and sixteenth notes. The Harpsichord, Cello, and Double Bass parts provide a harmonic accompaniment with a mix of eighth and quarter notes. The Violin I and II parts have rests for the first three measures and enter in the fourth measure with a sixteenth-note pattern.



11

Soprano

Tenor

Harpisichord

Violin I

Violin II

Cello

Double Bass

Detailed description: This block contains the musical score for measures 11 through 15. The instrumentation remains the same as in the previous block. The key signature and time signature are consistent. The Soprano and Tenor parts continue their melodic development. The Harpsichord, Cello, and Double Bass parts maintain their accompaniment. The Violin I and II parts play a steady sixteenth-note accompaniment throughout the measures.

16

Soprano  
Tenor  
Harpsichord  
Violin I  
Violin II  
Cello  
Double Bass



20

Soprano  
Tenor  
Harpsichord  
Violin I  
Violin II  
Cello  
Double Bass

25

Soprano

Tenor

Harpsichord

Violin I

Violin II

Cello

Double Bass



29

Soprano

Tenor

Harpsichord

Violin I

Violin II

Cello

Double Bass

Soprano

Handel, Georg Friedrich - Judas Maccabaeus - Ken Whitcomb

$\text{♩} = 80,000000$

7

15

21

26

Copyright ©1998 Ken Whitcomb  
All Rights Reserved

Tenor

Handel, Georg Friedrich - Judas Maccabaeus - Ken Whitcomb

♩ = 80,000000

7

16

23

27

Copyright ©1998 Ken Whitcomb  
All Rights Reserved

♩ = 80,000000



7



15



22



28



Copyright ©1998 Ken Whitcomb  
All Rights Reserved

Violin I

Handel, Georg Friedrich - Judas Maccabaeus - Ken Whitcomb

♩ = 80,000000

2 4

11

19

4

26

30

6

Copyright ©1998 Ken Whitcomb  
All Rights Reserved



Violin II

Handel, Georg Friedrich - Judas Maccabaeus - Ken Whitcomb

♩ = 80,000000

2 4

11

18

4

25

29

6

Copyright ©1998 Ken Whitcomb  
All Rights Reserved

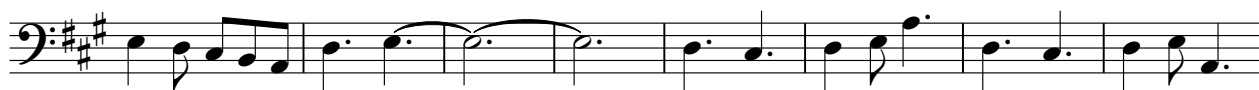
Cello

Handel, Georg Friedrich - Judas Maccabaeus - Ken Whitcomb

♩ = 80,000000



7



15



22



28



Copyright ©1998 Ken Whitcomb  
All Rights Reserved

♩ = 80,000000



7



15



22



28



Copyright ©1998 Ken Whitcomb  
All Rights Reserved