

Handel, Georg Friedrich - Ode for St. Cecilia's Day - Ken Whitcomb

♩ = 66,000069

Organ Treble

Organ Bass

Cello Solo

Cello

Double Bass

6

Detailed description: This system contains measures 1 through 8 of the piece. The tempo is marked as ♩ = 66,000069. The Organ Treble part features a melodic line with a sixteenth-note flourish in measure 8. The Organ Bass part provides a steady accompaniment with chords and moving lines. The Cello Solo part has a melodic line with a sixteenth-note flourish in measure 8. The Cello and Double Bass parts provide a harmonic and rhythmic foundation.

9

♩ = 76,000069

Organ Treble

Organ Bass

Cello Solo

Cello

Double Bass

76,000069

Detailed description: This system contains measures 9 through 15. The tempo is marked as ♩ = 76,000069. The Organ Treble part has a more active melodic line. The Organ Bass part continues with a steady accompaniment. The Cello Solo part has a melodic line with a sixteenth-note flourish in measure 15. The Cello and Double Bass parts provide a harmonic and rhythmic foundation.

16

6

Organ Treble

Organ Bass

Cello Solo

Cello

Double Bass

6

Detailed description: This system contains measures 16 through 22. The tempo is marked as ♩ = 76,000069. The Organ Treble part has a melodic line with a sixteenth-note flourish in measure 16. The Organ Bass part continues with a steady accompaniment. The Cello Solo part has a melodic line with a sixteenth-note flourish in measure 16. The Cello and Double Bass parts provide a harmonic and rhythmic foundation.

25

Organ Treble

Organ Bass

Cello Solo

Cello

Double Bass



30

Organ Treble

Organ Bass

Cello Solo

Cello

Double Bass

♩ = 66,000069

♩ = 66,000069



36

Organ Treble

Organ Bass

Violin I

Violin II

Viola

Cello Solo

Cello

Double Bass

♩ = 76,000069

♩ = 72,000031

♩ = 76,000069

♩ = 72,000031

44

Organ Treble

Organ Bass

Violin I

Violin II

Viola

Cello Solo

Cello

Double Bass



52

$\text{♩} = 66,000069$   $\text{♩} = 76,000069$

Soprano

Organ Treble

Organ Bass

Violin I

Violin II

Viola

Cello Solo

Cello

Double Bass

62

Soprano

Organ Treble

Organ Bass

Cello Solo

Cello

Double Bass



72

Soprano

Organ Treble

Organ Bass

Cello Solo

Cello

Double Bass



77

Soprano

Organ Treble

Organ Bass

Cello Solo

Cello

Double Bass

83  $\text{♩} = 72,000031$

Soprano

Organ Treble

Organ Bass

Violin I

Violin II

Viola

Cello Solo

Cello

Double Bass



90  $\text{♩} = 76,000069$

Soprano

Organ Treble

Organ Bass

Violin I

Violin II

Viola

Cello Solo

Cello

Double Bass

95

Soprano

Organ Treble

Organ Bass

Cello Solo

Cello

Double Bass



100

Soprano

Organ Treble

Organ Bass

Cello Solo

Cello

Double Bass



107

Soprano

Organ Treble

Organ Bass

Cello Solo

Cello

Double Bass

115

Soprano

Organ Treble

Organ Bass

Violin I

Violin II

Cello Solo

Cello

Double Bass



126

♩ = 72,000031

Soprano

Organ Treble

Organ Bass

Violin I

Violin II

Viola

Cello Solo

Cello

Double Bass

133  $\text{♩} = 76,000069$

Soprano

Organ Treble

Organ Bass  $\text{♩} = 76,000069$

Violin I

Violin II

Viola

Cello Solo

Cello

Double Bass



142  $\text{♩} = 70,000069$   $\text{♩} = 72,000031$

Soprano

Organ Treble

Organ Bass  $\text{♩} = 70,000069$   $\text{♩} = 72,000031$

Violin I

Violin II

Viola

Cello Solo

Cello

Double Bass



150

Organ Treble

Organ Bass

Violin I

Violin II

Viola

Cello Solo

Cello

Double Bass



158

Organ Treble

Organ Bass

Violin I

Violin II

Viola

Cello Solo

Cello

Double Bass

163 ♩ = 70,000069

Organ Treble

Organ Bass

Violin I

Violin II

Viola

Cello Solo

Cello

Double Bass



2

Soprano

♩ = 72,000031

♩ = 76,000069

128



138



147

♩ = 70,000069 ♩ = 72,000031

♩ = 74,000069 ♩ = 72,000031 ♩ = 70,000069



Organ Treble

Handel, Georg Friedrich - Ode for St. Cecilia's Day - Ker

♩ = 66,000069

7

6

11

♩ = 76,000069

6

17

24

28

31

V.S.



76

79

84

♩ = 72,000031

90

94

♩ = 76,000069

97

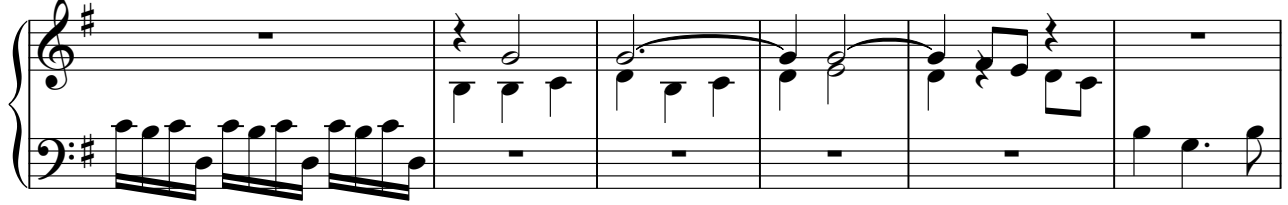
100

V.S.

106



109



115

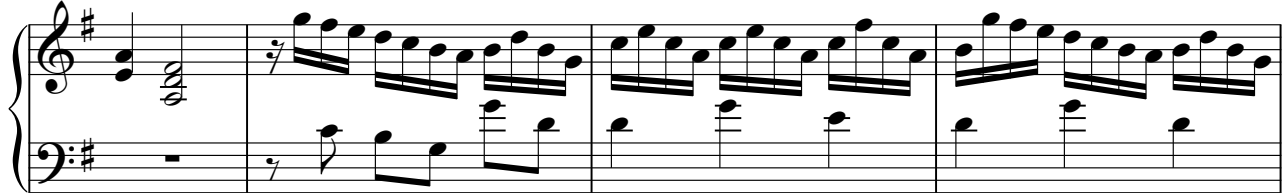


122



130

$\text{♩} = 72,000031$



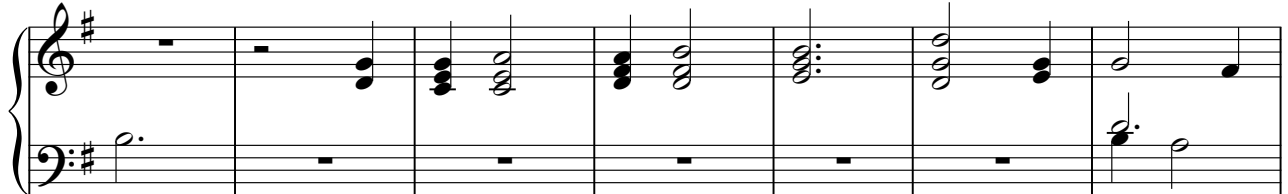
134

$\text{♩} = 76,000069$



141

$\text{♩} = 70,000069$







Handel, Georg Friedrich - Ode for St. Cecilia's Day - Ker

Organ Bass

♩ = 66,000069

12

♩ = 76,000069

20

28

♩ = 66,000069 = 76,000069

37

♩ = 72,000031

45

53

♩ = 66,000069 = 76,000069

61

V.S.

Organ Bass

69

77

87

♩ = 72,000031

♩ = 76,000069

95

104

113

123

131

♩ = 72,000031

♩ = 76,000069

Organ Bass

3

139

♩ = 70,000069

148 ♩ = 72,000031

152

♩ = 70,000069

159 ♩ = 66,000069

♩ = 72,000031

♩ = 70,000069

164

Handel, Georg Friedrich - Ode for St. Cecilia's Day - Ker

Violin I

♩ = 66,000069      ♩ = 76,000069      ♩ = 66,000069 ♩ = 76,000069

12      22      7

43      ♩ = 72,000031

47      ♩ = 66,000069

54      ♩ = 76,000069      ♩ = 72,000031

35

91      ♩ = 76,000069

26

120      2      3

131      ♩ = 72,000031

134      ♩ = 76,000069      ♩ = 70,000069 ♩ = 72,000031

11

149      ♩ = 76,000069

7      2

2

Violin I

161 ♩ = 72,000031

♩ = 70,000069

Musical notation for Violin I, measures 161-163. The music is in 3/8 time and G major. Measure 161 features a triplet of eighth notes (G4, A4, B4) followed by a quarter note (C5). Measure 162 features a triplet of eighth notes (B4, C5, D5) followed by a quarter note (E5). Measure 163 features a quarter note (E5), a dotted quarter note (F#5), and an eighth note (G5).

164

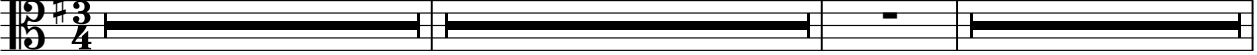
Musical notation for Violin I, measure 164. The music is in 3/8 time and G major. The measure contains a quarter note (G4), a dotted quarter note (A4), and an eighth note (B4).

Handel, Georg Friedrich - Ode for St. Cecilia's Day - Ker

Violin II

♩ = 66,000069      ♩ = 76,000069      ♩ = 66,000069      ♩ = 76,000069

**12**      **22**      **7**



43      ♩ = 72,000031




47      ♩ = 66,000069



54      ♩ = 76,000069      ♩ = 72,000031

**35**

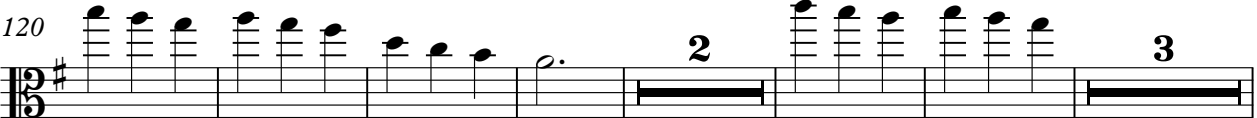


91      ♩ = 76,000069

**26**



120      **2**      **3**

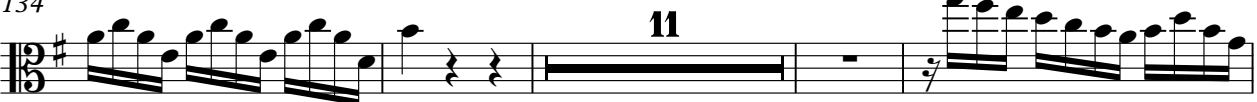


131      ♩ = 72,000031



134      ♩ = 76,000069      ♩ = 70,000069      ♩ = 72,000031

**11**



149      ♩ = 76,000069      ♩ = 76,000069

**7**      **2**



2

Violin II

161 ♩ = 72,000031

♩ = 70,000069

Musical notation for Violin II, measures 161-163. The music is in 3/8 time and G major. Measure 161 starts with a fermata over the first eighth note. The melody consists of eighth notes and quarter notes, with some beamed eighth notes. Measure 162 continues the eighth-note pattern. Measure 163 concludes with a quarter note and a dotted quarter note.

164

Musical notation for Violin II, measure 164. The melody consists of quarter notes and dotted quarter notes, ending with a whole note.



Handel, Georg Friedrich - Ode for St. Cecilia's Day - Ker

Viola

♩ = 66,000069    ♩ = 76,000069    ♩ = 66,000069 = 76,000069    ♩ = 72,000031

**12**                      **22**                      **7**

44

52

♩ = 66,000069 = 76,000069                      ♩ = 72,000031

**35**

92

♩ = 76,000069                      ♩ = 72,000031

**37**

134

♩ = 76,000069                      ♩ = 70,000069    ♩ = 72,000031

**11**

150

♩ = 76,000069 = 70,000069                      ♩ = 72,000031

**7**                      **2**

162

♩ = 70,000069

165

Cello Solo

Handel, Georg Friedrich - Ode for St. Cecilia's Day - Ker

♩ = 66,000069

7

6

11

♩ = 76,000069

6

17

24

28

31

34

♩ = 66,000069

40

♩ = 72,000031

4





165



Handel, Georg Friedrich - Ode for St. Cecilia's Day - Ker

Cello

♩ = 66,000069



11

♩ = 76,000069



19



27

♩ = 66,000069



36

♩ = 76,000069

♩ = 72,000031



44

♩ = 66,000069 = 76,000069



55



63



71



79



V.S.

2

Cello

89 ♩ = 72,000031

♩ = 76,000069



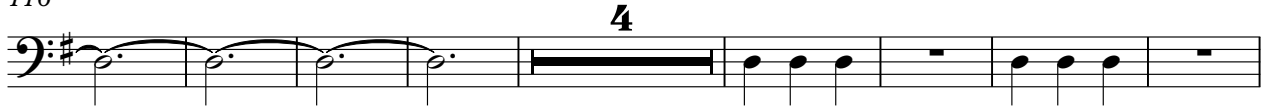
97



107



116



128

♩ = 72,000031

♩ = 76,000069



136



144

♩ = 70,000069 ♩ = 72,000031



154

♩ = 70,000069

♩ = 72,000031



162

♩ = 70,000069



Handel, Georg Friedrich - Ode for St. Cecilia's Day - Ker

Double Bass

♩ = 66,000069



12 ♩ = 76,000069



20



28

♩ = 66,000069 ♩ = 76,000069



37

♩ = 72,000031



45

♩ = 66,000069 ♩ = 76,000069



56



64



72



80

♩ = 72,000031



V.S.



2

# Double Bass

♩ = 76,000069

90



98



108



117

4



129

♩ = 72,000031

♩ = 76,000069



137



146

♩ = 70,000069 ♩ = 72,000031

3



156

♩ = 70,000069 ♩ = 72,000031

♩ = 72,000031



163

♩ = 70,000069

