

Handel, Georg Friedrich - Concerto No.3 for Oboe in G 1

♩ = 120,000000

Treble Clef

Treble Clef

Bass Clef

7

Treble Clef

Treble Clef

Bass Clef

13

Treble Clef

Treble Clef

Bass Clef

19

Treble Clef

Treble Clef

Bass Clef

25

Treble Clef

Treble Clef

Bass Clef

31

Treble Clef

Treble Clef

Bass Clef

37

Treble Clef

Treble Clef

Bass Clef

40

Treble Clef

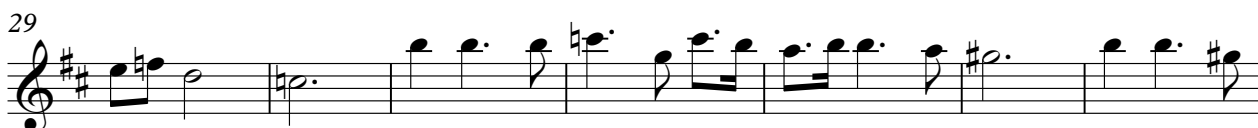
Treble Clef

Bass Clef

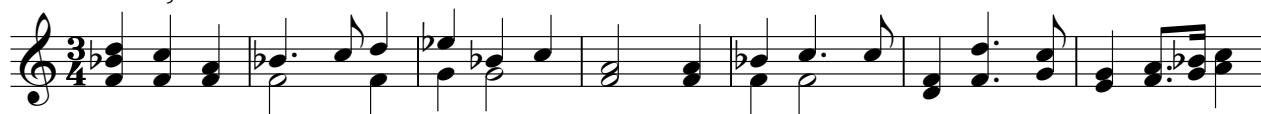
Treble Clef

Handel, Georg Friedrich - Concerto No.3 for Oboe in G 1

♩ = 120,000000



♩ = 120,000000



Bass Clef

Handel, Georg Friedrich - Concerto No.3 for Oboe in G I

♩ = 120,000000

Musical staff 1, measures 1-7. The staff is in treble clef with a 3/4 time signature. It contains a series of chords and single notes, including a half note with a sharp sign and a quarter note with a flat sign.

8

Musical staff 2, measures 8-15. The staff continues the musical notation with various chordal textures and melodic fragments.

16

Musical staff 3, measures 16-23. The notation features a mix of chords and single notes, with some notes beamed together.

24

Musical staff 4, measures 24-31. This section includes a variety of rhythmic patterns and chordal structures.

32

Musical staff 5, measures 32-37. The staff shows a continuation of the piece's harmonic and melodic development.

38

Musical staff 6, measures 38-45. The final staff on the page, ending with a double bar line.