

Handel, Georg Friedrich - Concerto Grosso in F (Op.6 No.9) Ken Whitcomb

♩ = 160,000000

Harpsichord LH

Violin I Concertino

Violin II Concertino

Viola

Cello

Double Bass



3

Harpsichord LH

Violin I Concertino

Violin II Concertino

Violin I Ripieno

Violin II Ripieno

Viola

Cello

Double Bass

Copyright © 1998 by Ken Whitcomb
All Rights Reserved

5

Harpsichord LH

Violin I Concertino

Violin II Concertino

Violin I Ripieno

Violin II Ripieno

Viola

Cello

Double Bass

Detailed description: This system contains measures 5 and 6 of the score. The Harpsichord LH part is in the bass clef, playing a rhythmic pattern of eighth notes. The Violin I Concertino and Violin II Concertino parts are in the treble clef, with the Violin I Concertino playing a melodic line and the Violin II Concertino playing a rhythmic accompaniment. The Violin I Ripieno and Violin II Ripieno parts are in the bass clef, playing a rhythmic pattern of eighth notes. The Viola part is in the bass clef, playing a rhythmic pattern of eighth notes. The Cello and Double Bass parts are in the bass clef, playing a rhythmic pattern of eighth notes.



7

Harpsichord LH

Violin I Concertino

Violin II Concertino

Violin I Ripieno

Violin II Ripieno

Viola

Cello

Double Bass

Detailed description: This system contains measures 7 and 8 of the score. The Harpsichord LH part is in the bass clef, playing a rhythmic pattern of eighth notes. The Violin I Concertino and Violin II Concertino parts are in the treble clef, with the Violin I Concertino playing a melodic line and the Violin II Concertino playing a rhythmic accompaniment. The Violin I Ripieno and Violin II Ripieno parts are in the bass clef, playing a rhythmic pattern of eighth notes. The Viola part is in the bass clef, playing a rhythmic pattern of eighth notes. The Cello and Double Bass parts are in the bass clef, playing a rhythmic pattern of eighth notes.

9

Harpsichord LH

Violin I Concertino

Violin II Concertino

Violin I Ripieno

Violin II Ripieno

Viola

Cello

Double Bass



11 ♩ = 160,000000

Harpsichord LH

Violin I Concertino

Violin II Concertino

Viola

Cello

Double Bass

Harpsichord LH

Violin I Concertino

Violin II Concertino

Violin I Ripieno

Violin II Ripieno

Viola

Cello

Double Bass

This musical score block covers measures 13 and 14. It features seven staves: Harpsichord LH (bass clef), Violin I Concertino (treble clef), Violin II Concertino (treble clef), Violin I Ripieno (bass clef), Violin II Ripieno (bass clef), Viola (bass clef), Cello (bass clef), and Double Bass (bass clef). The music is in a minor key with a common time signature. The Harpsichord LH part has a steady eighth-note accompaniment. The Violin I Concertino part has a melodic line with slurs. The Violin II Concertino part has a more active, rhythmic line. The Violin I and II Ripieno parts provide harmonic support with chords and moving lines. The Viola, Cello, and Double Bass parts follow a similar melodic contour with slurs.



Harpsichord LH

Violin I Concertino

Violin II Concertino

Violin I Ripieno

Violin II Ripieno

Viola

Cello

Double Bass

This musical score block covers measures 15 and 16. It features the same seven staves as the previous block. The Harpsichord LH part continues with its eighth-note accompaniment. The Violin I Concertino part has a melodic line with slurs. The Violin II Concertino part has a more active, rhythmic line. The Violin I and II Ripieno parts provide harmonic support with chords and moving lines. The Viola, Cello, and Double Bass parts follow a similar melodic contour with slurs.

17

Harpsichord LH

Violin I Concertino

Violin II Concertino

Violin I Ripieno

Violin II Ripieno

Viola

Cello

Double Bass

The image shows a page of a musical score for measures 17 and 18. The score is arranged in a system with eight staves. The top staff is for Harpsichord LH, followed by Violin I Concertino, Violin II Concertino, Violin I Ripieno, Violin II Ripieno, Viola, Cello, and Double Bass. The key signature is one flat (B-flat), and the time signature is 4/4. The Harpsichord part has a rest in measure 17 and enters in measure 18. The Violin I Concertino and Violin II Concertino parts have rests in measure 17 and enter in measure 18. The Violin I Ripieno and Violin II Ripieno parts enter in measure 17. The Viola, Cello, and Double Bass parts enter in measure 17. The score is written in a standard musical notation style with various note values, rests, and phrasing slurs.

19

Harpsichord LH

Violin I Concertino

Violin II Concertino

Violin I Ripieno

Violin II Ripieno

Viola

Cello

Double Bass



21

Harpsichord LH

Violin I Concertino

Violin II Concertino

Viola

Cello

Double Bass

23

Harpsichord LH

Violin I Concertino

Violin II Concertino

Violin I Ripieno

Violin II Ripieno

Viola

Cello

Double Bass

This musical score covers measures 23 and 24. It features seven staves: Harpsichord LH (bass clef), Violin I Concertino (treble clef), Violin II Concertino (treble clef), Violin I Ripieno (bass clef), Violin II Ripieno (bass clef), Viola (bass clef), Cello (bass clef), and Double Bass (bass clef). The key signature has one flat (B-flat). The music consists of eighth and sixteenth notes with various rests and phrasing marks.



25

Harpsichord LH

Violin I Concertino

Violin II Concertino

Violin I Ripieno

Violin II Ripieno

Viola

Cello

Double Bass

This musical score covers measures 25 and 26. It features the same seven staves as the previous system. The key signature remains one flat. The music continues with eighth and sixteenth notes, including phrasing slurs and accents.

27

Harpsichord LH

Violin I Concertino

Violin II Concertino

Violin I Ripieno

Violin II Ripieno

Viola

Cello

Double Bass

This musical score covers measures 27 and 28. It features seven staves: Harpsichord LH (bass clef), Violin I Concertino (treble clef), Violin II Concertino (treble clef), Violin I Ripieno (bass clef), Violin II Ripieno (bass clef), Viola (bass clef), Cello (bass clef), and Double Bass (bass clef). The key signature has one flat (B-flat). The Harpsichord LH part plays a steady eighth-note accompaniment. The Violin I Concertino and Violin II Concertino parts have melodic lines with some grace notes. The Violin I and II Ripieno parts play a rhythmic pattern of eighth notes. The Viola, Cello, and Double Bass parts provide a harmonic foundation with sustained notes and moving lines.



29

Harpsichord LH

Violin I Concertino

Violin II Concertino

Violin I Ripieno

Violin II Ripieno

Viola

Cello

Double Bass

This musical score covers measures 29 and 30. It features the same seven staves as the previous system. The key signature remains one flat. In measure 29, the Harpsichord LH continues its accompaniment. The Violin I Concertino and Violin II Concertino parts have melodic lines. The Violin I Ripieno part has a rhythmic pattern. The Violin II Ripieno part is silent in measure 29. In measure 30, the Harpsichord LH continues. The Violin I Concertino and Violin II Concertino parts have melodic lines. The Violin I Ripieno part has a rhythmic pattern. The Violin II Ripieno part is silent in measure 30. The Viola, Cello, and Double Bass parts provide a harmonic foundation.

31

Harpsichord LH

Violin I Concertino

Violin II Concertino

Violin I Ripieno

Violin II Ripieno

Viola

Cello

Double Bass



34

Harpsichord LH

Violin I Concertino

Violin II Concertino

Violin I Ripieno

Violin II Ripieno

Viola

Cello

Double Bass

Harpsichord LH

Violin I Concertino

Violin II Concertino

Violin I Ripieno

Violin II Ripieno

Viola

Cello

Double Bass



Harpsichord LH

Violin I Concertino

Violin II Concertino

Viola

Cello

Double Bass

40

Harpsichord LH
 Violin I Concertino
 Violin II Concertino
 Violin I Ripieno
 Violin II Ripieno
 Viola
 Cello
 Double Bass



42

Harpsichord LH
 Violin I Concertino
 Violin II Concertino
 Violin I Ripieno
 Violin II Ripieno
 Viola
 Cello
 Double Bass

44

Harpsichord LH

Violin I Concertino

Violin II Concertino

Violin I Ripieno

Violin II Ripieno

Viola

Cello

Double Bass

This musical score covers measures 44 and 45. It features seven staves: Harpsichord LH (bass clef), Violin I Concertino (treble clef), Violin II Concertino (treble clef), Violin I Ripieno (bass clef), Violin II Ripieno (bass clef), Viola (bass clef), Cello (bass clef), and Double Bass (bass clef). The key signature has one flat (B-flat). The Harpsichord LH part plays a steady eighth-note accompaniment. The Violin I Concertino and Violin II Concertino parts have melodic lines with some grace notes. The Violin I and II Ripieno parts play a rhythmic pattern of eighth notes. The Viola, Cello, and Double Bass parts provide a harmonic foundation with sustained notes and moving lines.



46

Harpsichord LH

Violin I Concertino

Violin II Concertino

Violin I Ripieno

Violin II Ripieno

Viola

Cello

Double Bass

This musical score covers measures 46 and 47. It features the same seven staves as the previous system. The key signature remains one flat. In measure 46, the Harpsichord LH continues its accompaniment. The Violin I Concertino and Violin II Concertino parts have melodic lines. The Violin I Ripieno part plays a rhythmic pattern. The Violin II Ripieno part has a rest in measure 46. The Viola, Cello, and Double Bass parts provide a harmonic foundation. In measure 47, the Violin II Ripieno part enters with a melodic line. The Harpsichord LH, Violin I Concertino, Violin I Ripieno, Viola, Cello, and Double Bass parts continue their respective parts.

48

Harpsichord LH

Violin I Concertino

Violin II Concertino

Violin I Ripieno

Violin II Ripieno

Viola

Cello

Double Bass

This musical system covers measures 48, 49, and 50. The Harpsichord LH part features a steady eighth-note accompaniment. The Violin I Concertino and Violin II Concertino parts have melodic lines with some rests in measure 50. The Violin I and II Ripieno parts provide harmonic support with sixteenth-note patterns. The Viola, Cello, and Double Bass parts follow a similar eighth-note accompaniment pattern.



51

Harpsichord LH

Violin I Concertino

Violin II Concertino

Violin I Ripieno

Violin II Ripieno

Viola

Cello

Double Bass

This musical system covers measures 51 and 52. The Harpsichord LH part continues with eighth-note accompaniment. The Violin I Concertino part has a melodic line with a rest in measure 51. The Violin II Concertino part has a melodic line with sixteenth-note patterns. The Violin I and II Ripieno parts provide harmonic support with sixteenth-note patterns. The Viola, Cello, and Double Bass parts follow a similar eighth-note accompaniment pattern.

Harpsichord LH

Violin I Concertino

Violin II Concertino

Violin I Ripieno

Violin II Ripieno

Viola

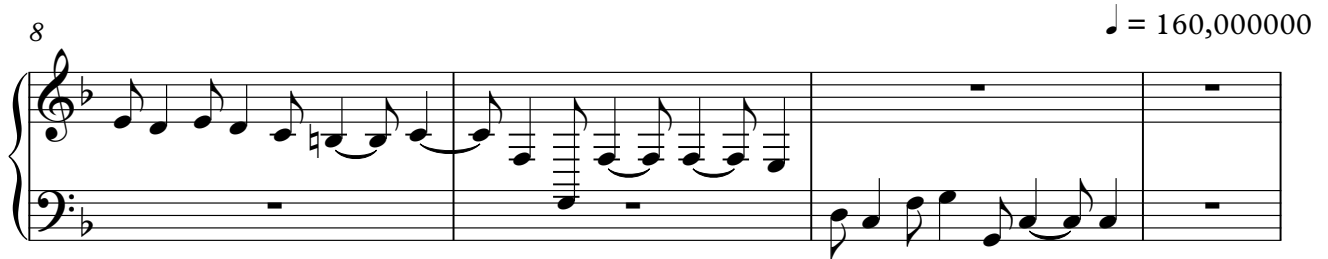
Cello

Double Bass

The image shows a page of a musical score for a chamber ensemble. It consists of eight staves, each labeled with an instrument. The instruments are: Harpsichord LH (bass clef), Violin I Concertino (treble clef), Violin II Concertino (treble clef), Violin I Ripieno (bass clef), Violin II Ripieno (bass clef), Viola (bass clef), Cello (bass clef), and Double Bass (bass clef). The score is written in a single system with a vertical bar line. The key signature has one flat (B-flat), and the time signature is 3/4. The music features a variety of note values, including eighth and sixteenth notes, and rests. The Harpsichord LH part is in the bass clef, while the Violin I parts are in the treble clef. The Violin II, Viola, Cello, and Double Bass parts are in the bass clef. The score is presented in a clean, black-and-white format.

Handel, Georg Friedrich - Concerto Grosso in F (Op.6 No.9) Ken Whitcomb
Harpisichord LH

♩ = 160,000000



Copyright © 1998 by Ken Whitcomb
All Rights Reserved

22



25



28



31



34



37



41



44



47



50



53



Handel, Georg Friedrich - Concerto Grosso in F (Op.6 No.9) Ken Whitcomb
Violin I Concertino

♩ = 160,000000

4

7

10

♩ = 160,000000

13

16

19

22

25

28

Detailed description: This image shows a page of musical notation for the Violin I Concertino from Handel's Concerto Grosso in F major, Op. 6 No. 9. The score is written in treble clef with a key signature of one flat (B-flat) and a time signature of 12/8. The tempo is marked as ♩ = 160,000000. The page contains nine staves of music, with measure numbers 1, 4, 7, 10, 13, 16, 19, 22, 25, and 28 indicated at the beginning of their respective staves. The notation includes various rhythmic values, accidentals, and phrasing slurs.

Copyright © 1998 by Ken Whitcomb
All Rights Reserved

V.S.

31



34



37



40



43



46



49



52



Handel, Georg Friedrich - Concerto Grosso in F (Op.6 No.9) Ken Whitcomb
Violin II Concertino

$\text{♩} = 160,000000$

4

7

$\text{♩} = 160,000000$

10

13

16

19

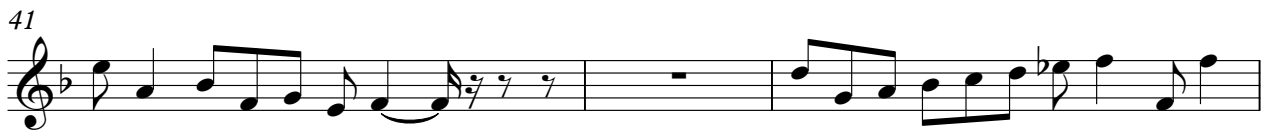
22

25

28

Detailed description: This image shows a page of musical notation for the Violin II Concertino from Handel's Concerto Grosso in F, Op. 6 No. 9. The score is written in treble clef with a key signature of one flat (B-flat) and a time signature of 12/8. The tempo is marked as quarter note = 160,000,000. The music consists of nine staves of notation, with measure numbers 1, 4, 7, 10, 13, 16, 19, 22, 25, and 28 indicated at the beginning of their respective staves. The notation includes various rhythmic values, accidentals, and articulation marks.

Copyright © 1998 by Ken Whitcomb
All Rights Reserved



Handel, Georg Friedrich - Concerto Grosso in F (Op.6 No.9) Ken Whitcomb
Violin I Ripieno


♩ = 160,000000
2



5



8



11 ♩ = 160,000000
2



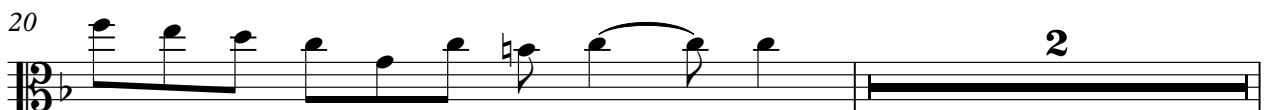
15



18



20



Copyright © 1998 by Ken Whitcomb
All Rights Reserved

Violin I Ripieno

23



26



29



32



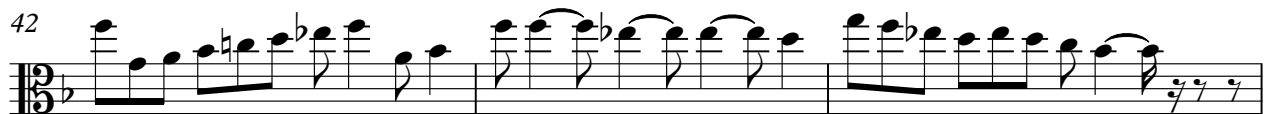
35



38



42



45



48



51



Handel, Georg Friedrich - Concerto Grosso in F (Op.6 No.9) Ken Whitcomb
Violin II Ripieno

♩ = 160,000000

2

5

8

11 ♩ = 160,000000

15

18

21

26

29

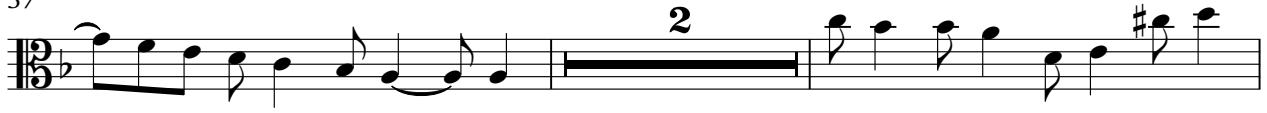
32

Copyright © 1998 by Ken Whitcomb
All Rights Reserved

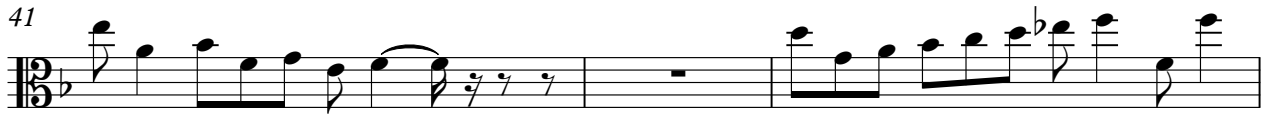
34



37



41



44



47



51



53



Viola Handel, Georg Friedrich - Concerto Grosso in F (Op.6 No.9) Ken Whitcomb

♩ = 160,000000

5

8

12

15

18

22

25

28

31

♩ = 160,000000

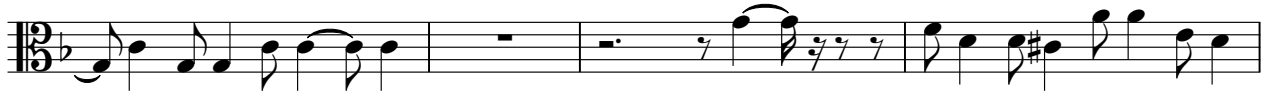
Copyright © 1998 by Ken Whitcomb
All Rights Reserved

V.S.

34



37



41



44



47



50



53



Cello Handel, Georg Friedrich - Concerto Grosso in F (Op.6 No.9) Ken Whitcomb

♩ = 160,000000



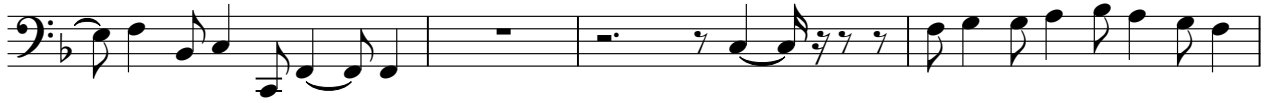
Copyright © 1998 by Ken Whitcomb
All Rights Reserved

V.S.

34



37



41



44



47



50



53



Handel, Georg Friedrich - Concerto Grosso in F (Op.6 No.9) Ken Whitcomb
Double Bass

♩ = 160,000000



Copyright © 1998 by Ken Whitcomb
All Rights Reserved

V.S.

